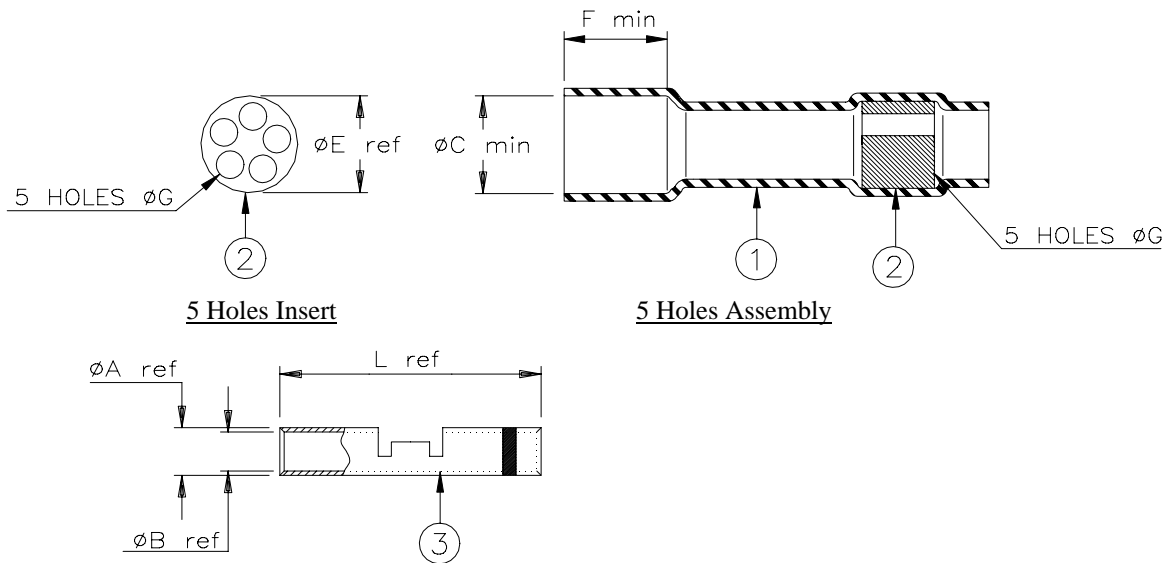


SPECIFICATION CONTROL DRAWING



Product Revision		Product Dimensions									
		Crimp Splice	L ref	A ref	B ref	CMA Range	Stripe Color	ϕC min	ϕG min	E ref	F min
D-436-0148	A	D-609-06	12.7 (0.500)	1.95 (0.077)	1.20 (0.047)	300-1510	Red	7.60 (0.300)	2.00 (0.078)	7.50 (0.295)	8.90 (0.350)
D-436-0149	A	D-609-07	14.6 (0.575)	2.65 (0.104)	1.65 (0.066)	779-2880	Blue				
D-436-0150	A	D-609-08	14.6 (0.575)	3.80 (0.150)	2.55 (0.100)	1900-6755	Yellow				

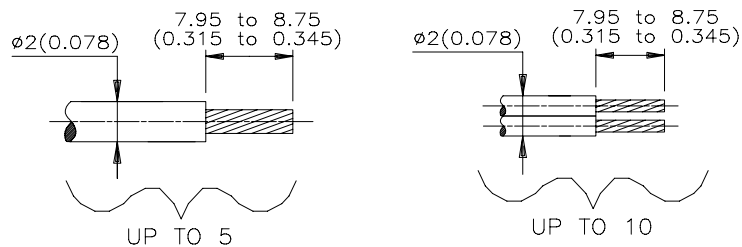
MATERIALS

1. INSULATION SLEEVE: Heat-shrinkable, transparent blue, radiation cross-linked modified polyvinylidene fluoride.
2. MELTABLE RINGS: Thermally stabilized thermoplastic. Color: natural.
3. CRIMP BARREL: Tin plated copper alloy. Color: see table.

APPLICATION

1. These controlled sealing systems are designed to make an immersion resistant multi-wire in-line splices made with wires having tin or silverplated conductors and insulations rated for at least +125°C.
2. Parts may be used to splice up to 5 wires having an insulation less than $\phi 2$ (0.078) or up to 10 wires (2 per hole) with insulation less than $\phi 1$ (0.039).
3. Temperature range: -55°C to +150°C.
4. For assembly instruction, see Raychem Installation Procedure RPIP-826-00.

For best results, prepare the cable as shown:



* A trademark of Raychem Corporation.

Raychem		THERMOFIT DEVICES		Raychem Corporation 300 Constitution Drive Menlo Park, CA 94025 USA		TITLE: IN-LINE CRIMP SPLICE DEVICE IMMERSION RESISTANT			
UNLESS OTHERWISE SPECIFIED DIMENSIONS ARE IN MILLIMETERS. INCHES DIMENSIONS ARE BETWEEN BRACKETS.						DOCUMENT NO.: D-436-0148/-0150			
TOLERANCES: 0.00 N/A 0.0 N/A 0 N/A		ANGLES: N/A ROUGHNESS IN MICRON		Raychem reserves the right to amend this drawing at any time. Users should evaluate the suitability of the product for their application.		DCR NUMBER: D981042		REPLACES: D436014X	
DRAWN BY: M. FORONDA		DATE: 06/23/98				PROD. REV. SEE TABLE		DOC ISSUE: 3	SCALE: None

If this document is printed it becomes uncontrolled. Check for the latest revision

Mouser Electronics

Authorized Distributor

Click to View Pricing, Inventory, Delivery & Lifecycle Information:

[TE Connectivity:](#)

[874435-000](#) [1194259-3](#)