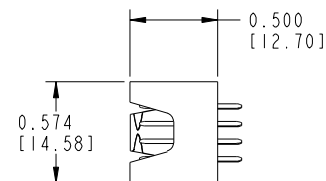
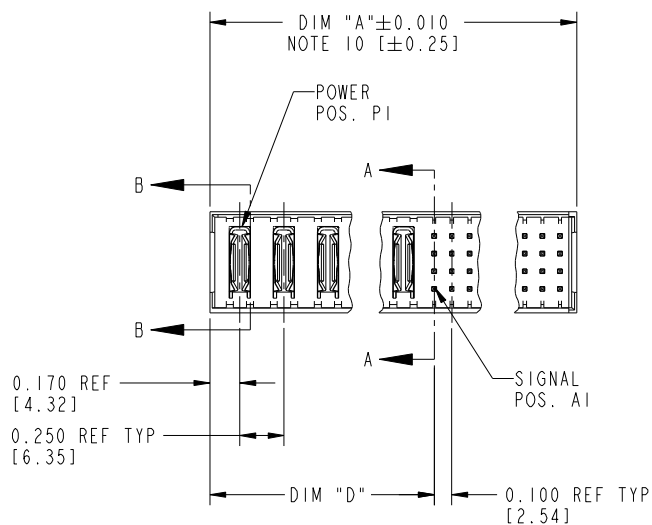
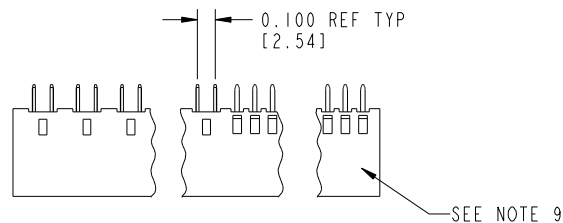


Tous droits strictement réservés. Reproduction ou communication à des tiers interdite sous quelque forme que ce soit sans autorisation écrite du propriétaire. Propriété de c FCI. Droits de reproduction FCI.



All rights strictly reserved. Reproduction or issue to third parties in any form whatever is not permitted without written authority from the proprietor. Property of FCI. Copyright FCI.

PRODUCT NUMBER
51706-ABBCCC00E0----
Note: ①
SEE NOTE 1



NOTE 2				Tolerances unless otherwise specified		CUSTOMER		FCI	
litr	ecr no.	dr	date	linear	.XX±.01/.X±0.3	COPY		www.fciconnect.com	
J	DG05-0132	SJ	05/31/05	linear	.XXX±.005/0.XX±0.13	projection			
K	DG05-0471	CS	11/16/05	linear	.XXX±.0020/.XXX±.051				
L	DG08-0284	SH	10/13/08	angles	0°±2°				
				dr	JRW 10-16-01				
				enr	J. ALLISON 10-16-01				
				chr	J. ALLISON 10-16-01				
				appd	J. ALLISON 10-16-01				
sheet index	revision sheet	L	L	L					
		1	2	3					

Pro/E

cage code 22526



PRODUCT NUMBER		DIM	LENGTH FORMULAS (SEE NOTE 10)
51706-ABBCCC00E0----		DIM "A"	.250 [6.35] x BB + .100 [2.54] x (CCC/4) + .090 [2.29] (NOTE 10)
Note: ①		DIM "D"	.250 [6.35] x BB + .095 [2.41]
SEE NOTE 1		DIM "F"	.250 [6.35] x BB + .100 [2.54] x (CCC/4) + .120 [3.05]
		DIM "G"	.250 [6.35] x BB + .225 [5.72] - .025 [.064]

CONNECTOR NOTES	
①	PRODUCT NUMBER CODE: 51706 - A BB CCC 00 E 0 LF NO THIS SUFFIX: 100u"/2.54um SnPb ON PCB INTERFACE ADD THIS SUFFIX: 78u"/2.00um Sn ON PCB INTERFACE ALWAYS "0" (ZERO) (NOTE 8) TAIL OPTIONS (NOTE 7) ALWAYS "00" (ZERO, ZERO) (NOTE 6) NUMBER OF SIGNAL CONTACTS (NOTE 5) NUMBER OF LEFT POWER CONTACTS (NOTE 4) PLATING (NOTE 3) BASE NUMBER
②	HOUSING MATERIAL: UL94 V-0 GLASS FILLED HIGH TEMP THERMO PLASTIC. SIGNAL CONTACT MATERIAL: COPPER ALLOY POWER CONTACT MATERIAL: COPPER ALLOY
③	PLATING OPTION: 1: SEE PRINT 10064183 FOR PLATING SPEC OF 51706-1BBCCC00E0 AND 51706-1BBCCC00E0LF
④	LEFT END POWER CONTACTS, 01 TO 20 AVAILABLE.
⑤	SIGNAL CONTACT, 004 TO 148 AVAILABLE.
⑥	THIS PART NOT AVAILABLE WITH RIGHT SIDE POWER CONTACTS.
⑦	TAIL OPTIONS: A = 0.135 +0.015/-0.010 [3.43 +0.38/-0.25] SOLDER TO BOARD B = 0.165 +0.015/-0.010 [4.19 +0.38/-0.25] SOLDER TO BOARD C = 0.165 +0.015/-0.010 [4.19 +0.38/-0.25] PRESS FIT
⑧	BOARD RETENTION NOT AVAILABLE WITH GUIDELESS ENDS.
⑨	MANUFACTURE'S NAME, P/N, AND DATE CODE TO APPEAR ON THIS SURFACE.
⑩	THE MAXIMUM OVERALL LENGTH (DIM A) OF A PART IS 8.00 [203.2]
11.	PRODUCT SPECIFICATION GS-12-149
12.	SEE PWRBLADE VERTICAL HEADER SPECIAL WORKSHEET (51696) FOR MATING LENGTH OPTIONS.
⑬	DIMENSIONS AND TOLERANCES ARE IN ACCORDANCE WITH ASME Y14.5M, 1994, UNLESS OTHERWISE SPECIFIED.

PCB NOTES:

14. ALL DIMENSIONS ARE BASIC UNLESS OTHERWISE SPECIFIED.

15. ALL THROUGH HOLES ARE LOCATED WITH A TRUE POSITION OF 0.004 [0.10]

16. ALL HOLE DIAMETERS ARE FINISHED HOLE SIZE.

17. $\varnothing 0.0453 \pm 0.0010$ [1.151 ± 0.025] DRILLED HOLES PLATED WITH 0.0003 [0.008] MIN SnPb OVER 0.001 [0.03] TO 0.003 [0.08] Cu PLATING TO ACHIEVE A $\varnothing 0.040 \pm 0.003$ [1.02 ± 0.07] HOLE.

18. FOR PRESS FIT APPLICATION USE FCI CAM TOOL 430169-XXX.

19. A SYMBOL WILL BE NEXT TO ANY DIMENSION, VIEW, OR NOTE WHICH HAS BEEN MODIFIED WITH CURRENT DRAWING VERSION.

mat'l code				NOTE 2		tolerances unless otherwise specified		CUSTOMER		FCI	
ltr	ecn no.	dr	date			.XX \pm .01/0.X \pm 0.3		COPY		www.fciconnect.com	
L				linear		.XXX \pm .005/0.XX \pm 0.13		projection		title	
						.XXX \pm .0020/.XX \pm .051				VERTICAL HEADER w/o GUIDE PIN POWER / SIGNAL	
				angles		0° \pm 2°				product family	
				dr	JRW	10-16-01				PWRBLADE	code
				enrg	J.ALLISON	10-16-01				size	213
				chr	J.ALLISON	10-16-01				dwg no	sheet
				appd	J.ALLISON	10-16-01				51706	2
sheet index	revision			sheet							

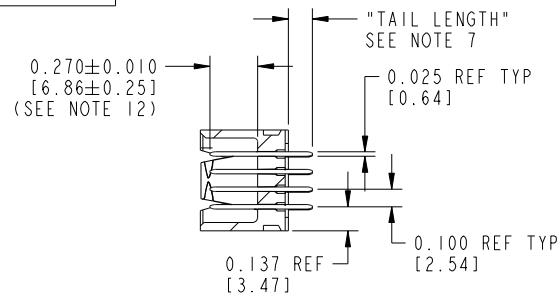
Pro/E		3		4	
		cage code		22526	

Tous droits strictement réservés. Reproduction ou communication à des tiers interdite sous quelque forme que ce soit sans autorisation écrite du propriétaire. Propriété de c FCI. Droits de reproduction FCI.

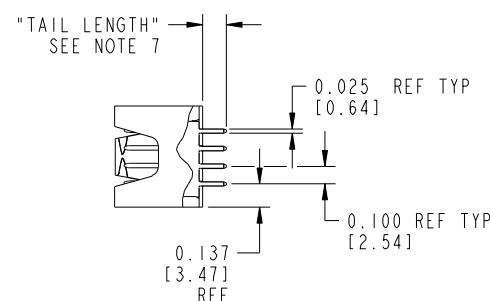


All rights strictly reserved. Reproduction or issue to third parties in any form whatever is not permitted without written authority from the proprietor. Property of FCI. Copyright FCI.

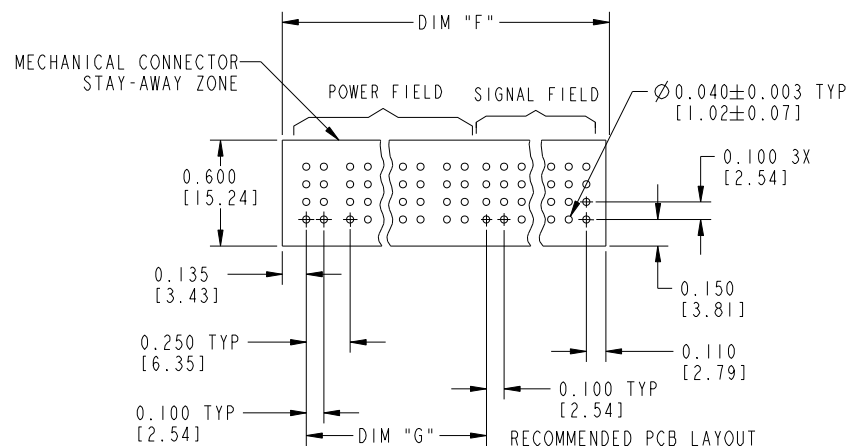
PRODUCT NUMBER
51706-ABBCCC00E0----
Note: ①
SEE NOTE 1



SECTION A-A



SECTION B-B



mat'l code				NOTE 2		tolerances unless otherwise specified		CUSTOMER		FCI	
ltr	ecn no.	dr	date			.XX±.01/0.X±0.3		COPY		www.fciconnect.com	
L						.XXX±.005/0.XX±0.13		projection		title VERTICAL HEADER w/o GUIDE PIN POWER / SIGNAL	
						.XXX±.0020/.XX±.051					
						angles	0°±2°			product family	
						dr	JRW 10-16-01			PWRBLADE	
						enrg	J. ALLISON 10-16-01	scale		size	dwg no
						chr	J. ALLISON 10-16-01			A	51706
						appd	J. ALLISON 10-16-01	1:1		code	
sheet index	revision sheet									213	sheet 3

Pro/E

cage code 22526

Mouser Electronics

Authorized Distributor

Click to View Pricing, Inventory, Delivery & Lifecycle Information:

[FCI / Amphenol:](#)

[51706-10200800A0LF](#) [51706-10402400B0LF](#) [51706-10402400C0LF](#) [51706-10207200A0LF](#)