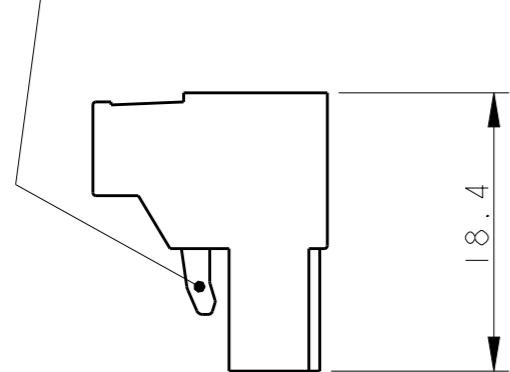


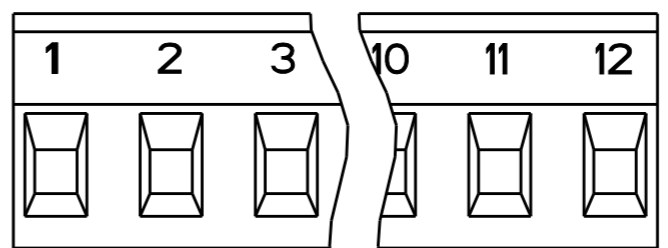
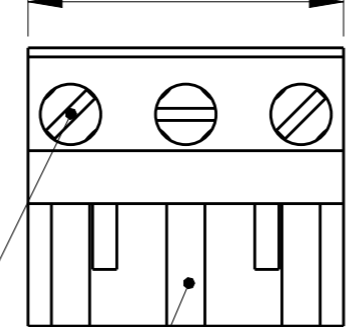
THIS DRAWING IS UNPUBLISHED. RELEASED FOR PUBLICATION 20  
 © COPYRIGHT 20 ALL RIGHTS RESERVED.

LOC	DIST	REVISIONS				
P	LTR	DESCRIPTION	DATE	DWN	APVD	
FT	0	C4	PN 2-282959-0 RELEASED FOR PRODUCTION	04DEC2018	RK PS	

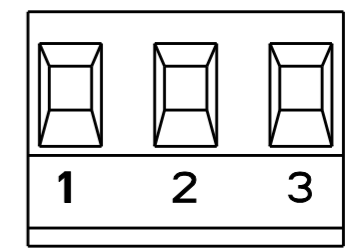
RETENTION LATCH  
(DISPOSITIVO DI RITENZIONE)



DIM. A



1-282959-5 AS SHOWN

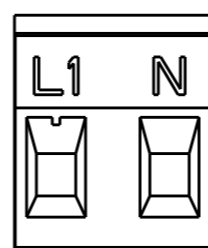


1-282959-6 AS SHOWN

MATING FACE  
(LATO DI ACCOPPIAMENTO)

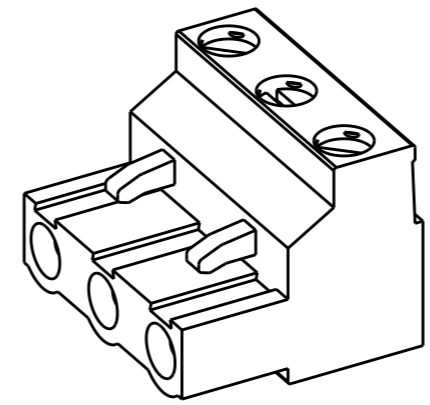
CLAMPING SCREW  
(VITE DI SERRAGGIO)

POLARIZATION KEY SLOT  
(SEDE PER LINGUETTE DI CODIFICA)



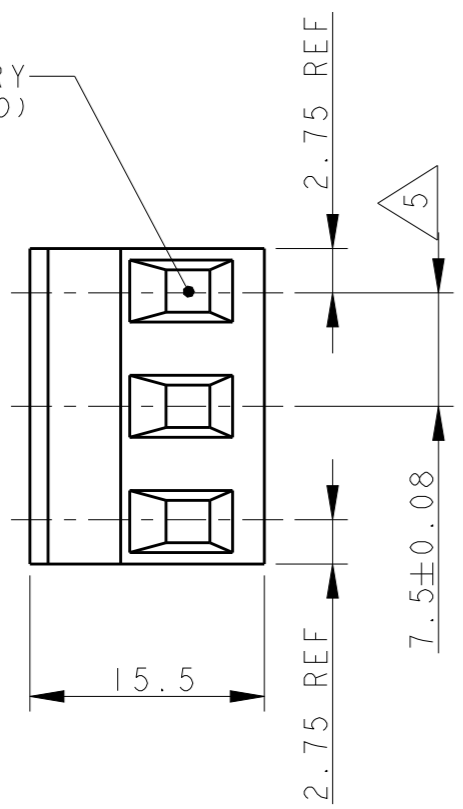
2-282959-0 AS SHOWN

OBSOLETE



282959-3 AS SHOWN

WIRE ENTRY  
(INGRESSO CAVO)



AS SHOWN	COLOUR	DIM. A	NO OF POS.	PART NUMBER
AS SHOWN	GREEN	13.0	2	2-282959-0
/	GRAY	20.5	3	1-282959-9
AS SHOWN	GREEN	20.5	3	<del>1-282959-6</del>
AS SHOWN	GREEN	90.0	12	<del>1-282959-5</del>
/	GREEN	73.0	10	<del>1-282959-4</del>
/	BLACK	20.5	3	<del>1-282959-3</del>
/	GREEN	88.0	12	1-282959-2
/	GREEN	80.5	11	1-282959-1
/	GREEN	73.0	10	1-282959-0
/	GREEN	65.5	9	282959-9
/	GREEN	58.0	8	282959-8
/	GREEN	50.5	7	282959-7
/	GREEN	43.0	6	282959-6
/	GREEN	35.5	5	282959-5
/	GREEN	28.0	4	282959-4
/	GREEN	20.5	3	282959-3
/	GREEN	13.0	2	282959-2

THIS DRAWING IS A CONTROLLED DOCUMENT.	
DIMENSIONS: mm	TOLERANCES UNLESS OTHERWISE SPECIFIED: 0 PLC ±- 1 PLC ±0.2 2 PLC ±0.20 3 PLC ±0.001 4 PLC ±0.0001 ANGLES ±2
MATERIAL -	FINISH -

DWN S. SCHLEGEL 25JUN96
CHK R CANTORE 25JUN96
APVD R CANTORE 25JUN96
PRODUCT SPEC -
APPLICATION SPEC -
WEIGHT -
CUSTOMER DRAWING

**STE** TE Connectivity

NAME: TERMINAL BLOCK PLUG, 7.5mm PITCH

SIZE: A3 CAGE CODE: 00779 DRAWING NO: C-282959 RESTRICTED TO: -

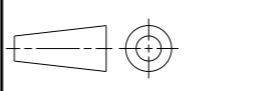
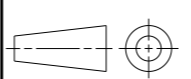
SCALE: 2:1 SHEET 1 OF 2 REV: C4

THIS DRAWING IS UNPUBLISHED.      RELEASED FOR PUBLICATION      20  
 © COPYRIGHT 20      ALL RIGHTS RESERVED.

LOC	DIST	REVISIONS					
		P	LTR	DESCRIPTION	DATE	DWN	APVD
FT	0	-		SEE SHEET 1	-	-	-

NOTES:

- MATERIALS AND FINISH  
 HOUSING: PA 6-6, UL 94-V0.  
 COLOURS: GRAY, RAL 7032.  
           BLACK.  
           GREEN.  
 CLAMP: BRASS, NICKEL PLATED.  
 DOUBLE SIDE CONTACT SPRING: PHOSPHOR BRONZE, TIN PLATED.  
 CLAMPING SCREW: M3, BRASS, NICKEL PLATED.
- MECHANICAL  
 MAX. INSERTION FORCE PER POLE : 3.0 N  
 MIN. WITHDRAWAL FORCE PER POLE : 1.5 N  
 WIRE STRIPPING LENGTH : 6.0-7.5 mm  
 RECOMMENDED TIGHTENING TORQUE FOR SCREW : 0.5 Nm.
- ELECTRICAL  
 WIRE RANGE : 12-30 AWG  
 MAX. VOLTAGE : 300 V  
 MAX CURRENT : 15 A  
 CONTACT RESISTANCE : <15 m Ohm  
 INSULATION RESISTANCE : >1000 M Ohm (500V DC)
- RECOGNIZED UNDER THE COMPONENT PROGRAM OF  
 UNDERWRITERS LABORATORIES INC. FILE NO E60677.
- NOT CUMULATIVE TOLERANCE.
- INK MARKING : BLACK COLOUR  
 NUMERICAL SEQUENCE : FROM LEFT TO RIGHT,  
 WIRE ENTRY SIDE
- OPERATING TEMPERATURE RANGE: -40°C TO +105°C.

THIS DRAWING IS A CONTROLLED DOCUMENT.		DWN S. SCHLEGEL 25JUN96	 TE Connectivity	
DIMENSIONS: mm		CHK R CANTORE 25JUN96		
TOLERANCES UNLESS OTHERWISE SPECIFIED:		APVD R CANTORE 25JUN96	NAME	
		PRODUCT SPEC	TERMINAL BLOCK PLUG, 7.5mm PITCH	
0 PLC ±- 1 PLC ±0.2 2 PLC ±0.20 3 PLC ±0.001 4 PLC ±0.0001 ANGLES ±2		APPLICATION SPEC	-	
MATERIAL -	FINISH -	WEIGHT -	SIZE A3	CAGE CODE 00779
		CUSTOMER DRAWING	DRAWING NO C-282959	RESTRICTED TO -
			SCALE 2:1	SHEET 2 OF 2
				REV C4