

65.15	72.00	56	-		170	3-1934768-6
53.90	60.75	46	-		140	3-1934768-5
42.65	48.50	36	-		110	3-1934768-4
31.40	38.25	26	-		80	3-1934768-3
20.15	27.00	16	-		50	3-1934768-2
47.15	54.00	40	-		122	3-1934768-1
65.15	72.00	56	-		170	2-1934768-6
53.90	60.75	46	-		140	2-1934768-5
42.65	49.50	36	-		110	2-1934768-4
31.40	38.25	26	-		80	2-1934768-3
20.15	27.00	16	-		50	2-1934768-2
47.15	54.00	40	-		122	2-1934768-1
65.15	72.00	-	170		170	1-1934768-6
53.90	60.75	-	140		140	1-1934768-5
42.65	49.50	-	110		110	1-1934768-4
31.40	38.25	-	80		80	1-1934768-3
20.15	27.00	-	50		50	1-1934768-2
47.15	54.00	-	122		122	1-1934768-1
65.15	72.00	-	170		170	1934768-6
53.90	60.75	-	140		140	1934768-5
42.65	49.50	-	110		110	1934768-4
31.40	38.25	-	80		80	1934768-3
20.15	27.00	-	50		50	1934768-2
47.15	54.00	-	122		122	1934768-1
"B"	"A"	DIFFERENTIAL PAIR	SIGNALS	PLATING	POSITIONS	PART NUMBER

THIS DRAWING IS A CONTROLLED DOCUMENT FOR TYCO ELECTRONICS CORPORATION
IT IS SUBJECT TO CHANGE AND THE CONTROLLING ENGINEERING ORGANIZATION
SHOULD BE CONTACTED FOR THE LATEST REVISION.

DIMENSIONS:

mm

TOLERANCES UNLESS OTHERWISE SPECIFIED:

0 PLC ±0.1
1 PLC ±0.1
2 PLC ±0.13
3 PLC ±0.013
4 PLC ±0.0001
ANGLES ±
FINISH

DWN

CHK

APVD

PRODUCT SPEC

APPLICATION SPEC

WEIGHT

CUSTOMER DRAWING

D. SZCZESNY

11 JAN 08

108-2254

114-13180

SCALE 3:1

Tyco Electronics

Harrisburg, PA 17105-3608

CARD EDGE CONNECTOR, VERTICAL
0.75 CENTERLINE

SIZE

CAGE CODE

DRAWING NO

RESTRICTED TO


A200779

C-1934768

SHEET 2 OF 4

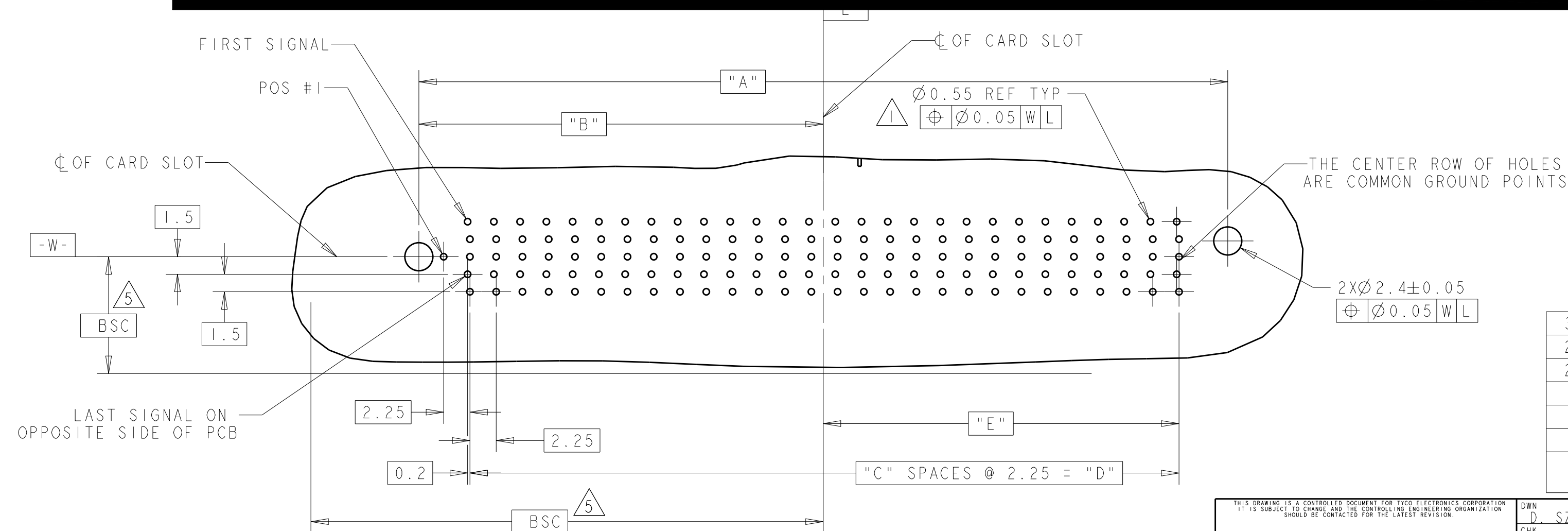
REV C

CUSTOM LOAD PATTERNS
ARE AVAILABLE. CONTACT
TYCO ELECTRONICS SALES.



23.61	1.00	34
21.48	1.50	29
19.23		26
14.36	1.50	19
7.98	1.50	12
"E"		

20.8	34	69.30	170
20.61	29	58.05	140
21.48	29	51.30	122
19.23	26	46.80	110
14.36	19	35.55	80
7.98	12	24.30	50
"E"	"E"	"A"	CONNECTOR SIZE



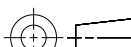
RECOMMENDED PCB LAYOUT

DIFFERENTIAL PAIR CONFIGURATION

DIMENSIONS FOR DIFFERENTIAL PAIR PCB LAYOUT

30.48	60.75	27	34.65	69.30	170
24.86	49.50	22	29.03	58.05	140
21.48	42.75	19	25.65	51.30	122
19.23	38.25	17	23.40	46.80	110
13.61	27.00	12	17.78	35.55	80
7.98	15.75	7	12.15	24.30	50
"E"	"D"	"C"	"B"	"A"	CONNECTOR SIZE

THIS DRAWING IS A CONTROLLED DOCUMENT FOR TYCO ELECTRONICS CORPORATION
IT IS SUBJECT TO CHANGE AND THE CONTROLLING ENGINEERING ORGANIZATION

SHOULD BE CONTACTED FOR THE LATEST REVISION.		
DIMENSIONS: mm		TOLERANCES UNLESS OTHERWISE SPECIFIED:
		0 PLC ± 0.1 1 PLC ± 0.1 2 PLC ± 0.13 3 PLC ± 0.013 4 PLC ± 0.0001
MATERIAL		ANGLES \pm FINISH

DWN	11 JAN 08
-----	-----------

D. SZCZESNY	
CHK	

CHR _____

APVD	-
------	---

PRODUCT SPEC	
--------------	--

108-2254

APPLICATION SPEC

114-13180

174	15100
WEIGHT	

CUSTOMER DRAWING

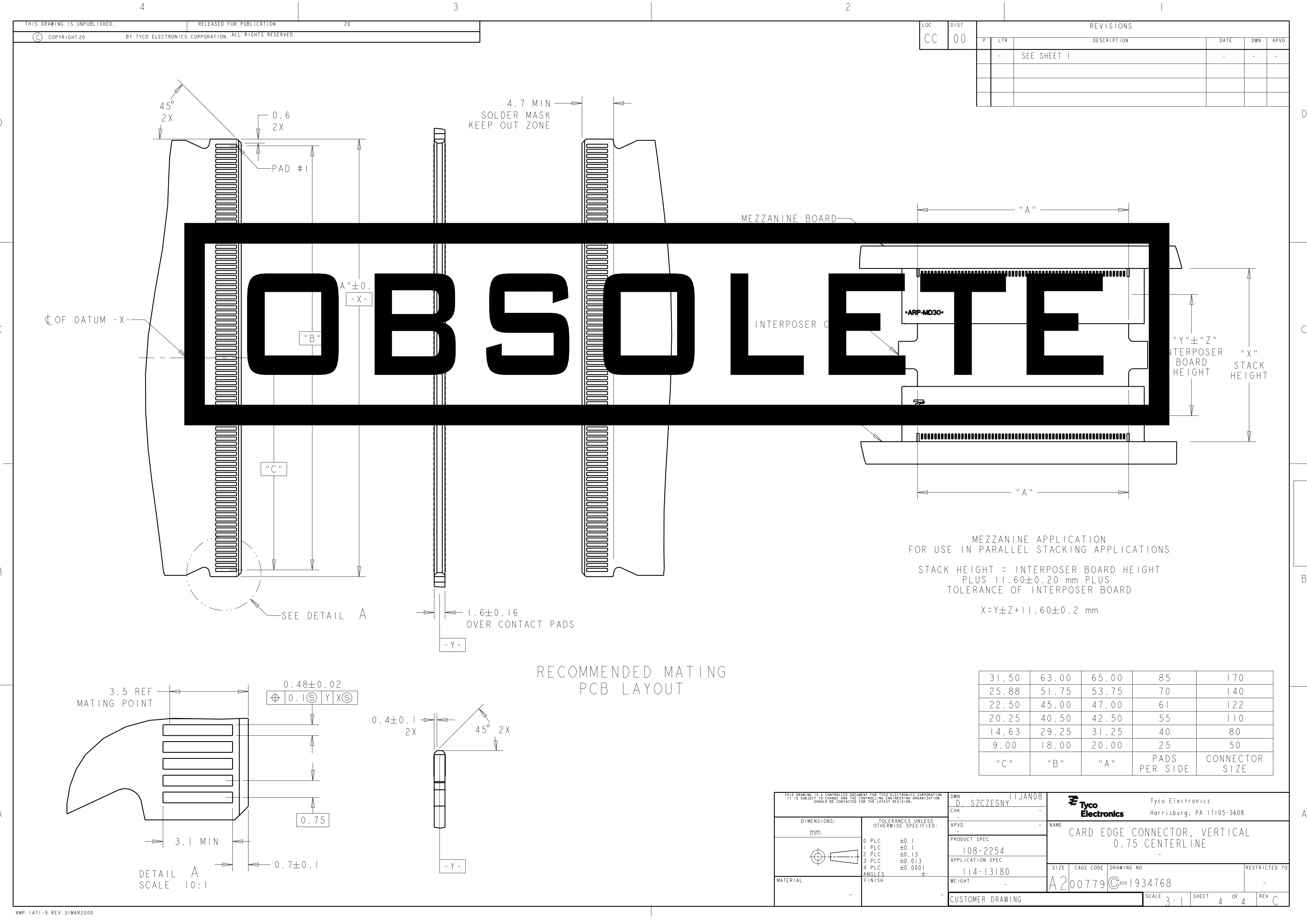
 Tyco Electronics

Electronics		Harrisburg, PA 17105-3608
NAME	CARD EDGE CONNECTOR, VERTICAL 0.75 CENTERLINE	

0.75 CENTERLINE

SIZE	CAGE CODE	DRAWING NO	RESTRICTED TO
A 2	00330	C-1034768	

A200779		G=1934768			
		SCALE	3.1	SHEET	3 OF 4
				REV	C



Mouser Electronics

Authorized Distributor

Click to View Pricing, Inventory, Delivery & Lifecycle Information:

[TE Connectivity:](#)

[3-1934768-3](#)