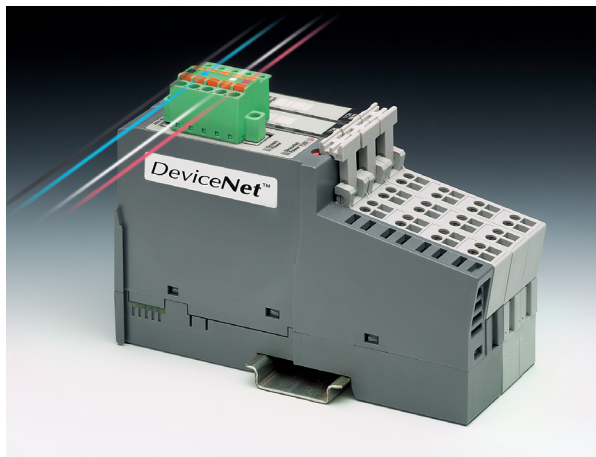


## COMBICON Spring Cage Plug with Double Connection TFKC 2,5 without and with Screw Flange, 5.08 mm Pitch

---

For looping through bus signals, there is now available the TWIN spring cage TFKC 2,5 plug for the DeviceNet. This front 2.5 mm<sup>2</sup> double connection with a pitch of 5.08 mm is freely accessible and has a test connection that can be firmly plugged in. For other bus systems or I/O modules, this plug can also be used with 2 to 10 positions. A raised labeling field takes the self-adhesive labeling strips. There are even labeling strips to conform with the requirements for DeviceNet marking. When the bus connector is unplugged, the functions of the connected module are not affected.



### COMBICON Select

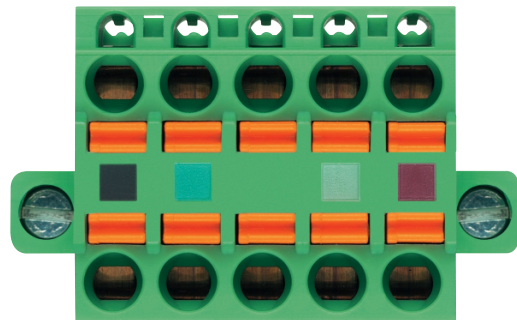
The COMBICON search engine with CAD downloading



COMBICON Select – the printed circuit board connection software supports your workflow from the PCB and housing layout to the ordering process with:

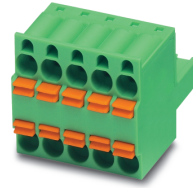
- Systematic and fast selection of products
- Universal Internet aided engineering with extensive CAD downloading
- Easy-to-use e-shopping functions.

<http://select.phoenixcontact.com>





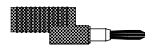

# TFKC 2,5/...-ST-5,08

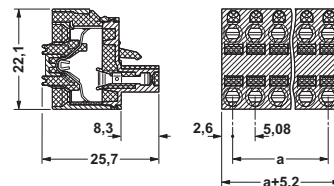
## 5.08 mm Pitch



**Note:**

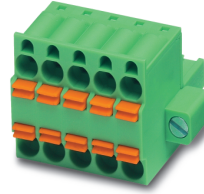
COMBICON plug connectors may only be actuated in the no-load condition. If smaller loads need to be switched for operational reasons, experimental values are available on request.

Description	No. of pos.	Dim. a [mm]	Type	Order No.	Pcs./Pkt.
<b>Plugs,</b> 5.08 mm pitch, color: green,	2	5.08	TFKC 2,5/2-ST-5,08	19 62 60 0	50
	3	10.16	TFKC 2,5/3-ST-5,08	19 62 61 3	
	4	15.24	TFKC 2,5/4-ST-5,08	19 62 62 6	
	5	20.32	TFKC 2,5/5-ST-5,08	19 62 63 9	
	6	25.40	TFKC 2,5/6-ST-5,08	19 62 64 2	
	7	30.48	TFKC 2,5/7-ST-5,08	19 62 65 5	
	8	35.56	TFKC 2,5/8-ST-5,08	19 62 66 8	
	9	40.64	TFKC 2,5/9-ST-5,08	19 62 67 1	
	10	45.72	TFKC 2,5/10-ST-5,08	19 62 68 4	
	(1) <b>Coding profile</b> , is inserted into the groove on the plug, insulating material: red			CP-MSTB	
(2) <b>Test plug</b> , consisting of metal part and colored insulating sleeve; Order data, see COMBICON catalog			MPS-... (see COMBICON catalog)		
(3) <b>Reducing plug</b> , for connecting a 4 mm Ø test plug to a 2.3 mm Ø test plug socket, insulation: gray			RPS	02 01 64 7	10
(4) <b>Screwdriver</b> , for releasing the spring blade: 0.6 x 3.5 x 100 mm, length: 180 mm			SZS 0,6 x 3,5	12 05 05 3	10
(5) <b>Marker card</b> , with 12 pcs. 10-section marker strips, white, self-adhesive, for 120 terminal blocks			SK 5,08/3,8 (see COMBICON catalog)		
(6) <b>Marker card</b> , 4-color, for Devicenet applications, self-adhesive, for COMBICON plugs and headers with 5.08 mm pitch			SK 5,08/3,8 DN	19 65 45 8	50
<b>Technical data</b>			see description		
Dimensions			5.08		
Pitch [mm]			5.08		
<b>Technical data in accordance with IEC/ DIN VDE</b>					
Insulating material group			I		
Surge voltage category / contamination class			III / 3 III / 2 II / 2		
Rated voltage [V]			320 320 630		
Rated surge voltage [kV]			4 4 4		
Nominal current / cross section [A]/[mm²]			12 / 2.5		
Maximum load current / cross section [A]/[mm²]			12 / 2.5		
<b>Connection capacity</b>					
Solid / stranded / conductor sizes [mm²]/[mm²]/AWG			0.2 - 2.5 / 0.2 - 2.5 / 24 - 12		
Stranded with ferrule without / with plastic sleeve [mm²]			0.25 - 2.5 / 0.25 - 2.5		
Stripping length [mm]			10		
Internal cylindrical gauge (IEC 60 947-1)			A2		
Insulating material			PA		
Inflammability class in acc. with UL 94			V0		
<b>Approval data (UL/CUL and CSA)</b>					
Nominal voltage / current / conductor sizes UL/CUL:[V]/[A]/AWG CSA:[V]/[A]/AWG			300 / 10 / applied for		





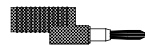

# TFKC 2,5/...-STF-5,08

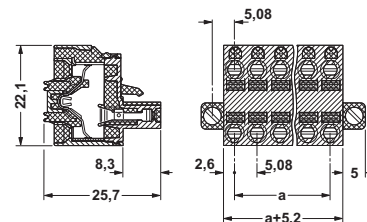
## 5.08 mm Pitch



**Note:**

COMBICON plug connectors may only be actuated in the no-load condition. If smaller loads need to be switched for operational reasons, experimental values are available on request.

Description	No. of pos.	Dim. a [mm]	Type	Order No.	Pcs./Pkt.
<b>Plugs, 5.08 mm pitch, color: green,</b>	2	5.08	TFKC 2,5/2-STF-5,08	19 62 69 7	50
	3	10.16	TFKC 2,5/3-STF-5,08	19 62 70 7	
	4	15.24	TFKC 2,5/4-STF-5,08	19 62 71 0	
	5	20.32	TFKC 2,5/5-STF-5,08	19 62 72 3	
	6	25.40	TFKC 2,5/6-STF-5,08	19 62 73 6	
	7	30.48	TFKC 2,5/7-STF-5,08	19 62 74 9	
	8	35.56	TFKC 2,5/8-STF-5,08	19 62 75 2	
	9	40.64	TFKC 2,5/9-STF-5,08	19 62 76 5	
	10	45.72	TFKC 2,5/10-STF-5,08	19 62 77 8	
	(1) <b>Coding profile</b> , is inserted into the groove on the plug, insulating material: red			CP-MSTB	17 34 63 4
(2) <b>Test plug</b> , consisting of metal part and colored insulating sleeve; Order data, see COMBICON catalog			MPS-... (see COMBICON catalog)		
(3) <b>Reducing plug</b> , for connecting a 4 mm Ø test plug to a 2.3 mm Ø test plug socket, insulation: gray			RPS	02 01 64 7	10
(4) <b>Screwdriver</b> , for releasing the spring blade: 0.6 x 3.5 x 100 mm, length: 180 mm			SZS 0,6 x 3,5	12 05 05 3	10
(5) <b>Marker card</b> , with 12 pcs. 10-section marker strips, white, self-adhesive, for 120 terminal blocks			SK 5,08/3,8 (see COMBICON catalog)		
(6) <b>Marker card</b> , 4-color, for Devicenet applications, self-adhesive, for COMBICON plugs and headers with 5.08 mm pitch			SK 5,08/3,8 DN	19 65 45 8	50
<b>Technical data</b>			see description		
Dimensions			5.08		
Pitch [mm]					
<b>Technical data in accordance with IEC/ DIN VDE</b>					
Insulating material group			-		
Surge voltage category / contamination class			III / 3 III / 2 II / 2		
Rated voltage [V]			320 320 630		
Rated surge voltage [kV]			4 4 4		
Nominal current / cross section [A]/[mm²]			12 / 2.5		
Maximum load current / cross section [A]/[mm²]			12 / 2.5		
<b>Connection capacity</b>					
Solid / stranded / conductor sizes [mm²]/[mm²]/AWG			0.2 - 2.5 / 0.2 - 2.5 / 24 - 12		
Stranded with ferrule without / with plastic sleeve [mm²]			0.2 - 2.5 / 0.2 - 2.5		
<b>Multiple connection (2 conductors with same cross section)</b>					
Stranded with TWIN ferrule with plastic sleeve [mm²]					
<b>Stripping length</b> [mm]			10		
<b>Internal cylindrical gauge (IEC 60 947-1)</b>			A2		
<b>Insulating material</b>			PA		
Inflammability class in acc. with UL 94			V0		
<b>Approval data (UL/CUL and CSA)</b>					
Nominal voltage / current / conductor sizes UL/CUL:[V]/[A]/AWG CSA:[V]/[A]/AWG			300 / 10 / applied for		



© Phoenix Contact 15.11.02 TNR: 5127218-01 http://www.phoenixcontact.com