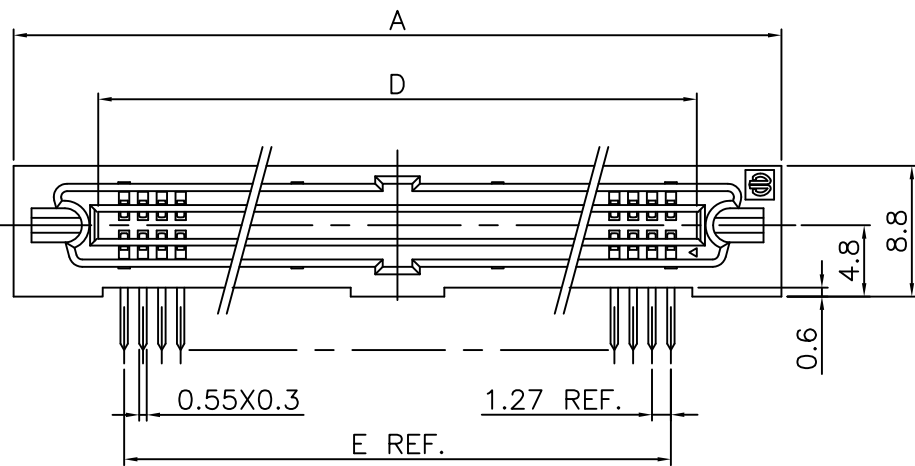
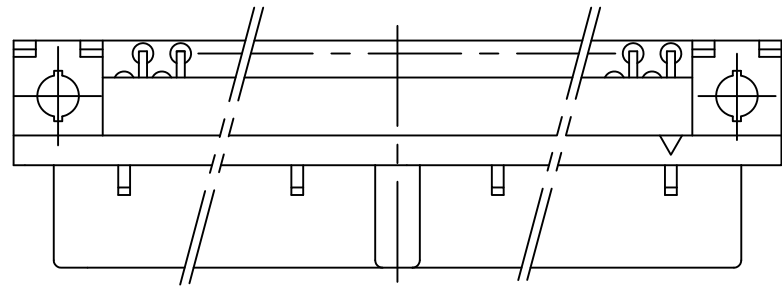
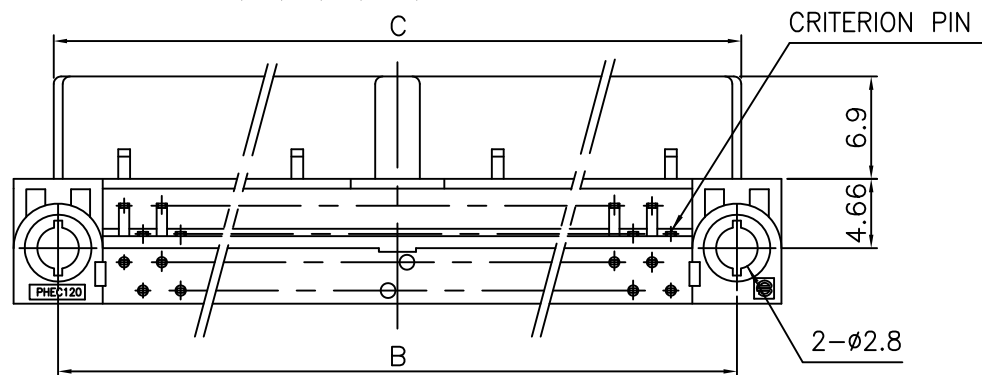


PRODUCT NO.

JSC 96359

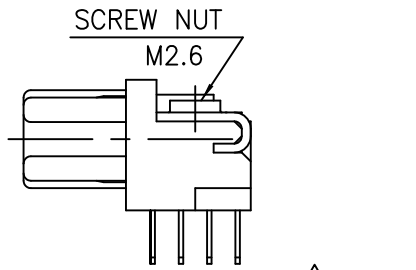


NO. OF CONTACTS:40,60,68,80,100,120

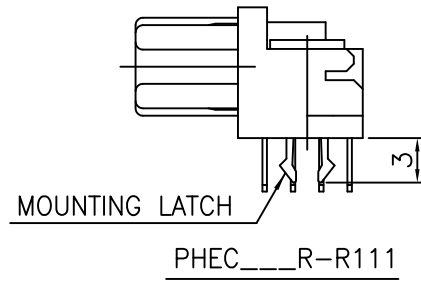


NOTES

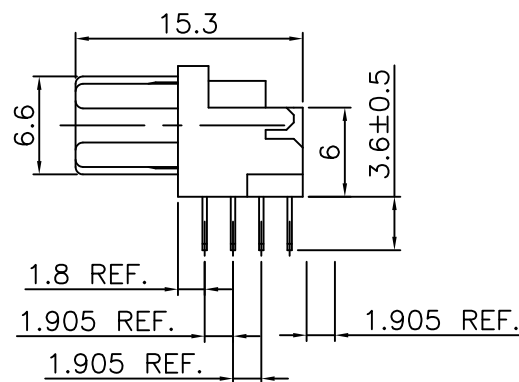
- 1.BODY, LOCATOR MATERIAL : PBT GLASS FILLED (UL94V-0), COLOR BLACK
- 2.TERMINAL MATERIAL : PHOSPHOR BRONZE
- 3.MOUNTING LATCH MATERIAL : PHOSPHOR BRONZE
- 4.SCREW NUT : STEEL
- 5.TERMINAL FINISH
CONTACT AREA : GOLD FLASH 0.1μm min. OVER NICKEL UNDERLAYER
SOLDER TAILS : PURE Sn 2μm min. OVER NICKEL UNDERLAYER
- 6.MOUNTING LATCH FINISH : PURE Sn 2μm min. OVER NICKEL UNDERLAYER
- 7.SCREW NUT FINISH : NICKEL
- 8.THIS PRODUCT MEETS EUROPEAN UNION DIRECTIVES AND OTHER COUNTRY REGULATIONS AS DESCRIBED IN GS-22-008
- 9.THE HOUSING WILL WITHSTAND EXPOSURE TO 260 DEGREE PEAK TEMPERATURE FOR 10 SECONDS IN A WAVE SOLDER APPLICATION WITH A 1.6mm MINIMUM THICK CIRCUIT BOARD.



SCREW NUT M2.6
PHEC__R-R112 Obsolete

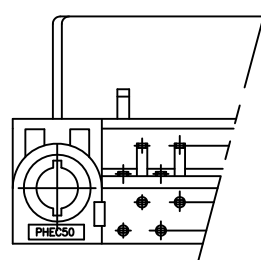


MOUNTING LATCH
PHEC__R-R111



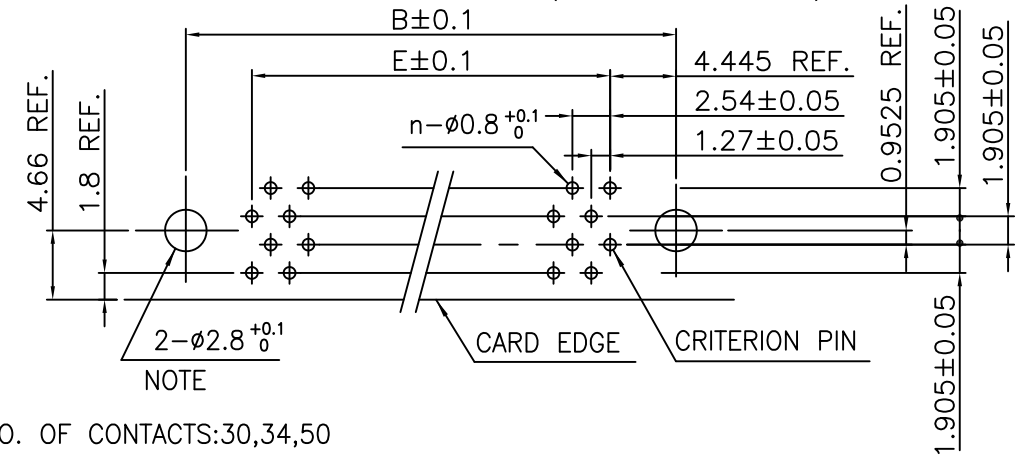
PHEC__R-R110

NO. OF CONTACTS:30,34,50

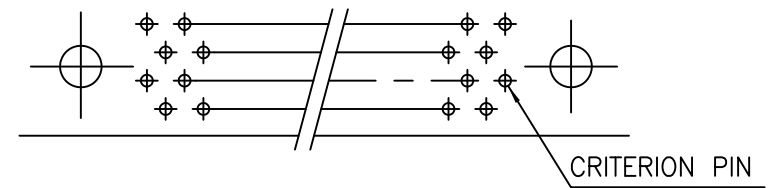


RECOMMENDED PC BOARD
THICKNESS:1.6 ±0.2
HOLE PATTERN (COMPONENT SIDE)

NO. OF CONTACTS:40,60,68,80,100,120 (n:NO. OF CONTACTS)



NO. OF CONTACTS:30,34,50



NOTE : THROUGH-HOLES FOR MOUNTING LATCHES ALSO SHOULD BE PLATED.

CAT. NO.	NO. OF CONTACTS (MATING SIDE)	DIMENSIONS				
		A	B	C	D	E
PHEC30R-R11_LF	15/ROW X 2 ROWS	32.67	26.67	27.26	21.26	17.78
PHEC34R-R11_LF	17/ROW X 2 ROWS	35.21	29.21	29.80	23.80	20.32
PHEC40R-R11_LF	20/ROW X 2 ROWS	39.02	33.02	33.61	27.61	24.13
PHEC50R-R11_LF	25/ROW X 2 ROWS	45.37	39.37	39.96	33.96	30.48
PHEC60R-R11_LF	30/ROW X 2 ROWS	51.72	45.72	46.31	40.31	36.83
PHEC68R-R11_LF	34/ROW X 2 ROWS	56.80	50.80	51.39	45.39	41.91
PHEC80R-R11_LF	40/ROW X 2 ROWS	64.42	58.42	59.01	53.01	49.53
PHEC100R-R11_LF	50/ROW X 2 ROWS	77.12	71.12	71.71	65.71	62.23
PHEC120R-R11_LF	60/ROW X 2 ROWS	89.82	83.82	84.41	78.41	74.93

mat'l. code ---				surface ISO 1302 ✓		tolerance ISO 406 ISO 1101		projection		product family PHEC		CODE JP
ltr description ecn no dr date				tolerances unless otherwise specified		angles linear		MM		title		
A RELEASED J05-0186 S.O 3/29/'05				0.X ±0.3						PRINTED CIRCUIT CONNECTOR		
B REVISED J07-0047 S.O 1/25/'07				0.XX ±0.3						(CAT.NO.PHEC _ _ _ R-R11_LF)		
C REVISED J07-0458 S.O 9/11/'07				0'±2'				scale N/A		dwg no sheet 1 of 1 size		
D EOL of R112LF ELX-J-17067 S.W 2/27/'14				dr S.Watanabe 2/27/'14		enr S.Watanabe 2/27/'14		chr K.Ito 2/27/'14		appd Y.Kameda 2/27/'14		JSC 96359 A3
sheet index				revision sheet		D 1				type Customer Drawing		Rev. D

Mouser Electronics

Authorized Distributor

Click to View Pricing, Inventory, Delivery & Lifecycle Information:

[FCI / Amphenol:](#)

[PHEC50P-R211LF](#) [PHEC50R-R211LF](#) [PHEC100R-R411LF](#) [PHEC100P-R112LF](#) [PHEC100R-S211-HLF](#)
[PHEC120P-R112LF](#) [PHEC50P-S411LF](#) [PHEC60P-R112LF](#) [PHEC60P-R211-ELF](#) [PHEC34P-R411LF](#) [PHEC50R-](#)
[S111-HLF](#) [PHEC80P-S311-XLF](#) [PHEC80R-R311-XLF](#) [PHEC50R-SC11LF](#) [PHEC100R-S311-XLF](#) [PHEC80R-RC11-](#)
[XLF](#) [PHEC100P-RC11-XLF](#) [PHEC100R-RC11-ZLF](#) [PHEC40P-RC11-XLF](#) [PHEC120P-R212LF](#) [PHEC40R-RA11LF](#)
[PHEC100R-R311-XLF](#) [PHEC50R-S411LF](#) [PHEC30R-S110-HLF](#) [PHEC80R-S311-HXLF](#)