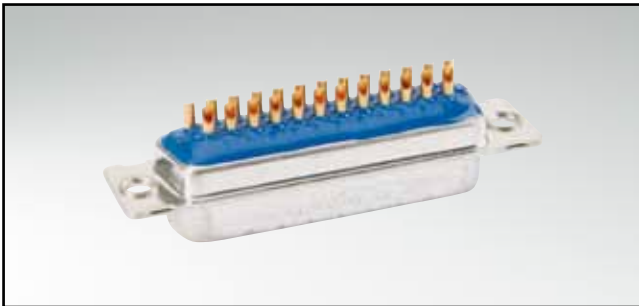


# D-SUB STANDARD – IP67

Solder cup – Precision machined contacts – For hood Assembly –  
For wire size AWG 20

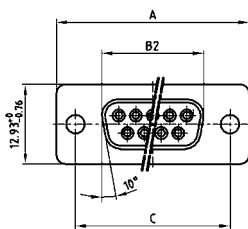


RoHS compliant - CSA listed, File No.LR115000-1 UL listed, File No. E202784

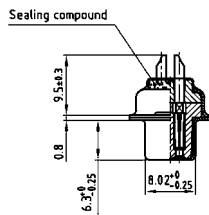
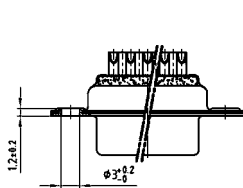
## DESCRIPTION

- Suitable for wire size **AWG 20**
- Mounting style:  
with through-hole, Ø .118" / 3.0 mm
- Quality class 3 (also available in quality class 1)
- Shell: Brass tin plated (stainless steel available on request)

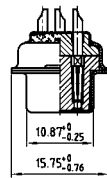
## SOCKET CONNECTOR



No. of pos.	A +0.76	B2 -0.25	C
09	31.19	16.46	25.00 <sup>+0.12</sup> / <sub>-0.13</sub>
15	39.52	24.79	33.30 <sup>+0.15</sup> / <sub>-0.10</sub>
25	53.42	38.50	47.04 <sup>+0.13</sup> / <sub>-0.10</sub>
37	69.70	54.96	63.50 <sup>+0.13</sup> / <sub>-0.10</sub>
50	67.31	52.55	61.10 <sup>+0.14</sup> / <sub>-0.11</sub>

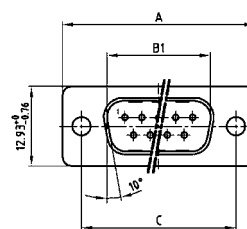


9-37 pos.

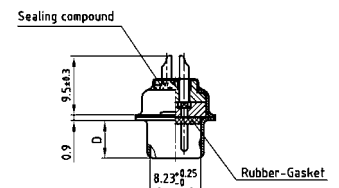
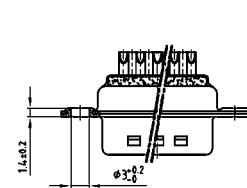


50 pos.

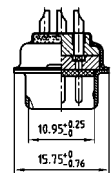
## PLUG CONNECTOR



No. of pos.	A +0.76	B1 +0.25	C
09	31.19	16.79	25.00 <sup>+0.12</sup> / <sub>-0.13</sub>
15	39.52	25.12	33.30 <sup>+0.15</sup> / <sub>-0.10</sub>
25	53.42	38.84	47.04 <sup>+0.13</sup> / <sub>-0.10</sub>
37	69.70	55.30	63.50 <sup>+0.13</sup> / <sub>-0.10</sub>
50	67.31	52.68	61.10 <sup>+0.14</sup> / <sub>-0.11</sub>



9-37 pos.



50 pos.

## ORDER DATA

SOCKET CONNECTOR		
No. of pos.	Mounting style	Part Number
09	Through-hole	4 STD09SAM99A10 X
15	Through-hole	4 STD15SAM99A10 X
25	Through-hole	4 STD25SAM99A10 X
37	Through-hole	4 STD37SAM99A10 X
50	Through-hole	4 STD50SAM99A10 X

PLUG CONNECTOR		
No. of pos.	Mounting style	Part Number
09	Through-hole	4 STD09PAM99A10 X
15	Through-hole	4 STD15PAM99A10 X
25	Through-hole	4 STD25PAM99A10 X
37	Through-hole	4 STD37PAM99A10 X
50	Through-hole	4 STD50PAM99A10 X

# Mouser Electronics

Authorized Distributor

Click to View Pricing, Inventory, Delivery & Lifecycle Information:

[CONEC:](#)

[4STD09SCM99A10X](#)