

REVISIONS				
ZONE	LTR	DESCRIPTION	DATE	APPROVED
N	REV PER	ECO-08-006296	PY	07-08 BW

SERIES "G" CONNECTORS  
AND SHIELD SHOWN FOR  
REFERENCE ONLY

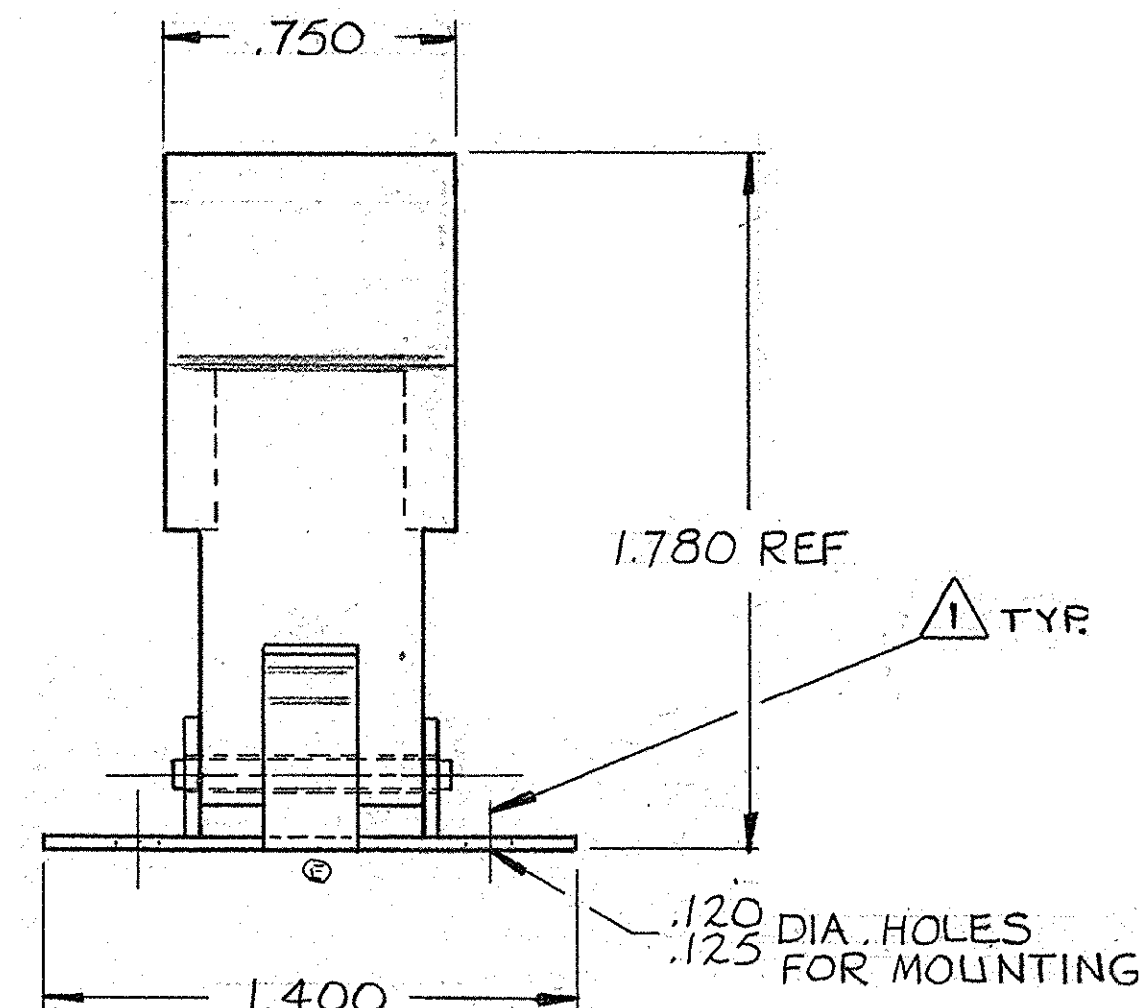
SUPERSEDED BY S-202832-2

LOCKING LATCH  
MAT'L: ZINC DIE CAST  
PER QQ-E-363

SPRING CATCH PLATE  
MAT'L: CARBON STEEL PER  
QQ-S-700  
FINISH: PLATED NICKEL PER  
QQ-N-290 OVER COPPER  
FLASH PER MIL-C-14550

ROLL PIN (.094 D.I.A.)  
MAT'L: CARBON STEEL  
FINISH: PLATED ZINC

- 202832 -1 1. AS SHOWN  
2. WITHOUT MOUNTING HARDWARE
- 202832 -2 1. SAME AS -1 EXCEPT  
2. WITH MOUNTING HARDWARE  $\Delta$
- 202832 -3 1. SAME AS -1 EXCEPT:  
2. CONSIST OF ONE LOCKING LATCH  
ASSY WITHOUT MOUNTING HARDWARE.
- 5-202832-1 1. SAME AS -1 EXCEPT-  
ROHS COMPLIANT RC
- 5-202832-2 1. SAME AS -1 EXCEPT-  
WITH MOUNTING HARDWARE  $\Delta$



- $\Delta$  MOUNTING HARDWARE: WASHER (PASSIVATED STAINLESS STEEL) #4-40 HEX NUT (ZINC PLATED CARBON STEEL) #4-40 FILLISTER HD SCREW (ZINC PLATED CARBON STEEL W/ SUPPLEMENTARY CHROMATE FINISH)
2. TWO LOCKING LATCH ASSEMBLIES ARE INCLUDED WITH -1, -2 & 5-2.
3. ALL LOCKING LATCHES MUST BE USED IN CONJUNCTION WITH A SHIELD AS SHOWN.
4. NOT TO BE USED WITH FLOATING BUSHINGS.
- $\Delta$  MOUNTING HARDWARE: #4-40 FILLISTER SCREW, WASHER AND #4-40 HEX NUT- STAINLESS STEEL; PASSIVATED

AMP INFO		QTY		NOMENCLATURE OR		PART OR	
LOC PRINT DIST		REQD		DESCRIPTION		IDENTIFYING NO	
R39							
UNLESS OTHERWISE SPECIFIED				CONTRACT NO			
DIMENSIONS ARE IN INCHES				DR K. Jones			
TOLERANCES ON				DATE 7/30/65			
FRACTIONS DECIMALS ANGLES				CHK R.S. Heister			
± ± .005 ±				DATE 9/10/65			
MATERIAL				DSGN ENGR J. J. Whilligane			
① SEE CALLOUTS				DATE 9-13-65			
HEAT TREAT				APPR P. B. Miller			
FINISH				DSGN APPD			
① SEE CALLOUTS				OTHER APPD			
AMP INCORPORATED				HARRISBURG, PENNSYLVANIA			
TRADEMARK				NAME			
SERIES G LOCKING				LATCH ASSEMBLY			
SIZE		CODE IDENT NO		NUMBER		REV	
C		00779		202832		N	
SCALE 2-1		WT		CALC		SHEET	

# Mouser Electronics

Authorized Distributor

Click to View Pricing, Inventory, Delivery & Lifecycle Information:

[TE Connectivity:](#)

[5-202832-2](#)