

4

3

2

1

THIS DRAWING IS UNPUBLISHED.

RELEASED FOR PUBLICATION

,19 .

© COPYRIGHT 19

BY AMP INCORPORATED. ALL RIGHTS RESERVED.

LOC
GDIST
14

REVISIONS

P

LTR

DESCRIPTION

DATE

DWN

APVD

D

REVISED PER 0L20-0093-97

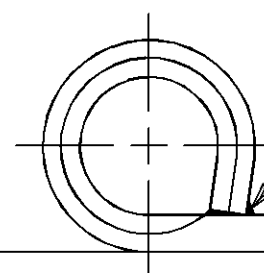
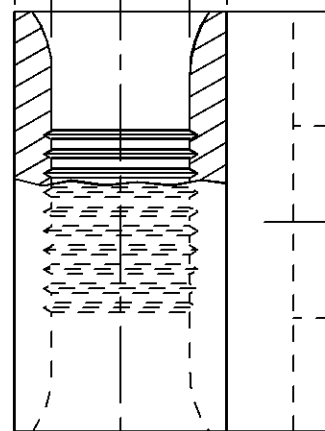
20MAY97

DKS

MJS

3.28
[.129]
MIN DIA

5.74
[.226]
MAX DIA

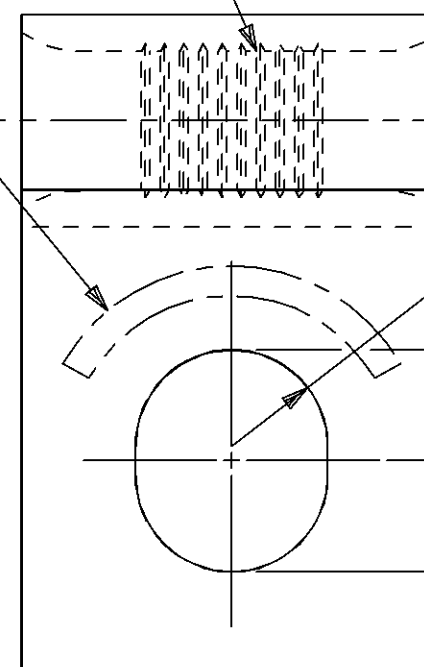
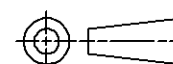


BRAZED SEAM

 $90^{\circ} + 10^{\circ}$
 $- 0^{\circ}$ 12.70 ± 0.38
[.500 \pm .015] 0.99 ± 0.05
[.039 \pm .002]

SERRATIONS

1

 2.54 ± 0.13 R
[.100 \pm .005] 5.87 ± 0.38
[.231 \pm .015] 5.54
[.218]THIS DRAWING IS A CONTROLLED DOCUMENT FOR AMP INCORPORATED.
IT IS SUBJECT TO CHANGE AND THE CONTROLLING ENGINEERING
ORGANIZATION SHOULD BE CONTACTED FOR THE LATEST REVISION.DIMENSIONS:
mm [INCHES]TOLERANCES UNLESS
OTHERWISE SPECIFIED:

0 PLC \pm
1 PLC \pm
2 PLC ± 0.20 [.008]
3 PLC \pm
4 PLC \pm
ANGLES \pm

MATERIAL COPPER
PER ASTM B-152
ANNEALEDFINISH TIN PLATE
0.00254 [.000100] MIN
THK PER MIL-T-10727

DWN DK SCHRUM 20MAY97

CHK MJ SPICER 20MAY97

APVD JL MECKLEY 20MAY97

PRODUCT SPEC

APPLICATION SPEC

WEIGHT -

CUSTOMER DRAWING

AMPAMP Incorporated
Harrisburg, PA 17105-3608NAME
TERMINAL, BENT 90°,
RECTANGULAR TONGUE, FLAG,
SOLISTRAND™

SIZE

CAGE CODE

DRAWING NO

A3 00779 C-330216

SCALE 5:1

SHEET 1 OF 1

REV D

AMP INCORPORATED
CUSTOMER SERVICE SYSTEMSFOR ADDITIONAL PRODUCT
INFORMATION OR COPIES
OF DRAWINGS AND
TECHNICAL DOCUMENTSPRODUCT INFORMATION CENTER
1-800-522-6752RECOMMENDED OPERATING TEMPERATURE:
170°C MAXVOLTAGE RATING:
NOT APPLICABLEFOR APPLICATION
TOOLING INFORMATIONTOOLING ASSISTANCE CENTER
1-800-722-1111WIRE CROSS SECTIONAL AREA RANGE:
2.62-6.64mm² [5,180-13,100] CIR MILS
STRANDED

FOR ORDER ENTRY

1-800-526-5142

Mouser Electronics

Authorized Distributor

Click to View Pricing, Inventory, Delivery & Lifecycle Information:

[TE Connectivity:](#)

[330216](#)