

THIS DRAWING IS UNPUBLISHED.

RELEASED FOR PUBLICATION

© COPYRIGHT - BY TYCO ELECTRONICS CORPORATION. ALL RIGHTS RESERVED.

LOC

	DIST
--	------

REVISIONS

[illegible]

LTR

DESCRIPTION

DATE _____

	DWN
--	-----

	APVD
--	------

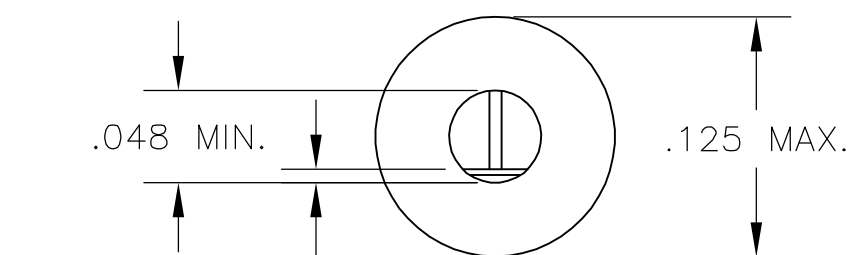
	W2
--	----

REVISED PER ECO-06-018765

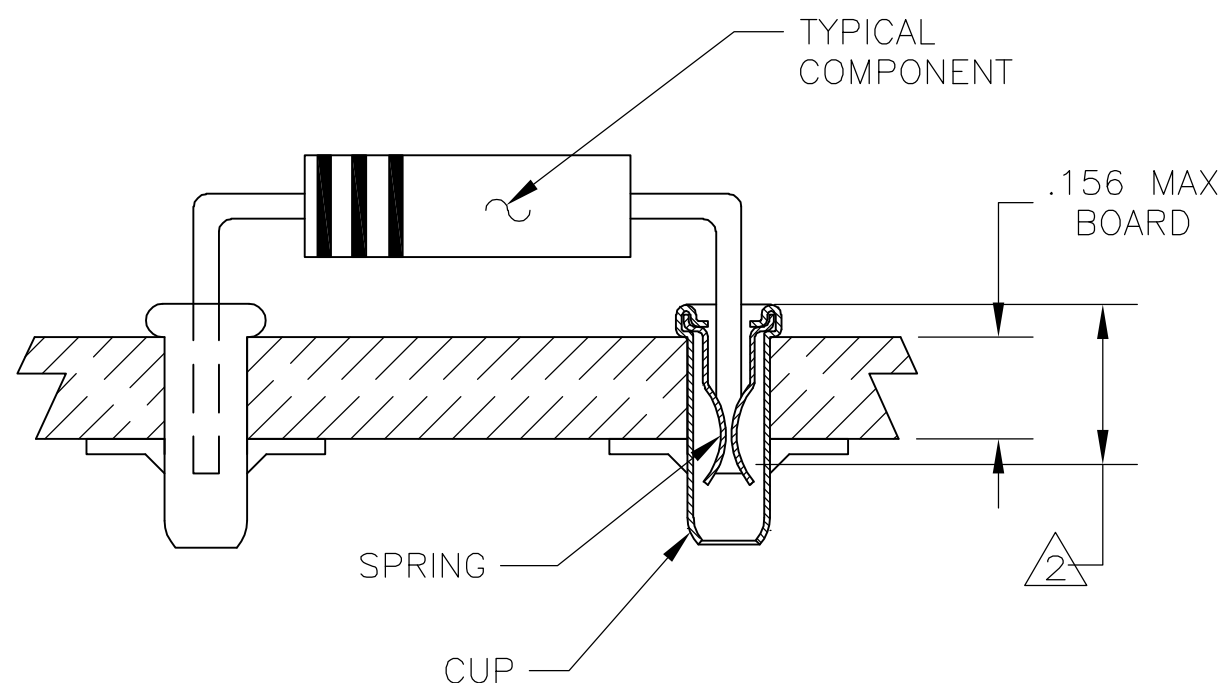
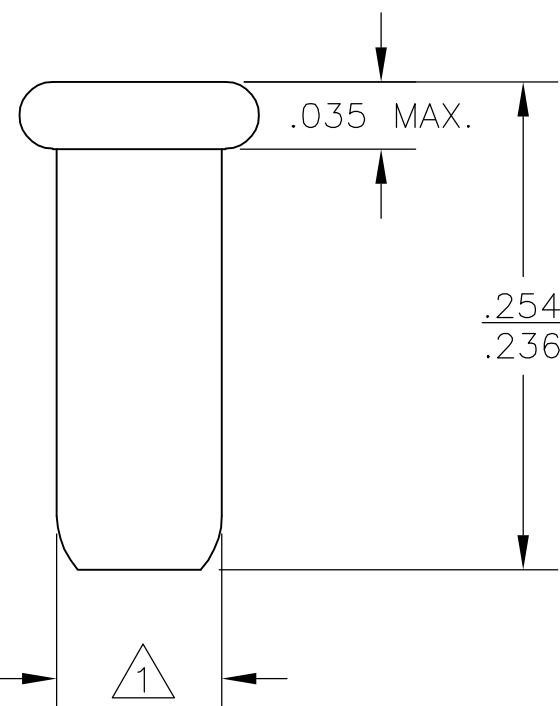
	13APR07
--	---------

	DH
--	----

	DB
--	----




.007 MAX
CUT-OFF TAB



1. PART FITS IN TO A #43 DRILLED HOLE ($.089 \pm .0015$) FOR HAND INSERTION, AND A #44 DRILLED HOLE ($.086 \pm .0015$) FOR MACHINE INSERTION.
2. .145 MIN INSERTION DEPTH REQUIRED FOR A RELIABLE CONNECTION.
3. SPRING IS SECURED IN CUP WITH NO SPRING ROTATION PERMISSABLE.
4. LEAD RANGES & PERFORMANCE RESULTS:

LEAD RANGES (DIA)	.018—	.020—.025	—	.032—.035	—	.040
MAX INSERTION FORCE		17 OZ		37 OZ		48 OZ
MIN EXTRACTION FORCE		1.0 OZ		1.5 OZ		2.0 OZ
MILLVOLT DROP (MAX)		2.00 mV		1.75 mV		1.50 mV

	OBSOLETE	TIN-LEAD	PRE-TIN	380635-5
SUPSD BY 380635-2		TIN-LEAD	.000050 MIN Au OVER	380635-4
	OBSOLETE	.000050 MIN Au OVER .000050 MIN NICKEL	.000050 MIN NICKEL	380635-3
	OBSOLETE	TIN-LEAD	.000030 MIN Au OVER	380635-2
		.000030 MIN Au OVER .000030 MIN NICKEL	.000030 MIN NICKEL	380635-1
		CUP	SPRING	PART NO.
		FINISH		

THIS DRAWING IS A CONTROLLED DOCUMENT.		DWN D.HUMBERT		07FEB2007		<div><div><div>tyco</div><div>Electronics</div></div><div>Tyco Electronics Corporation Harrisburg, PA 17105-3608</div></div>	
DIMENSIONS: INCHES		TOLERANCES UNLESS OTHERWISE SPECIFIED:		CHK J.HAVENER		-	
		0 PLC ± -		APVD		-	
		1 PLC ± -		J.HAVENER		NAME	
		2 PLC ± -		PRODUCT SPEC		REUSABLE COMPONENT RECEPTACLE	
3 PLC ± -		-					
4 PLC ± -		4 PLC ± -		APPLICATION SPEC			
ANGLES ± -		± -		-		SIZE	
MATERIAL		FINISH		WEIGHT		CAGE CODE	
CUP - _COPPER		SEE TABLE		-		DRAWING NO	
SPRING - Be-Cu						RESTRICTED TO	
						A3	
						00779	
						C-380635	
						SCALE	
						SHEET	
						1 OF 1	
						REV	
						W2	

Mouser Electronics

Authorized Distributor

Click to View Pricing, Inventory, Delivery & Lifecycle Information:

[TE Connectivity:](#)

[380635-1](#)