

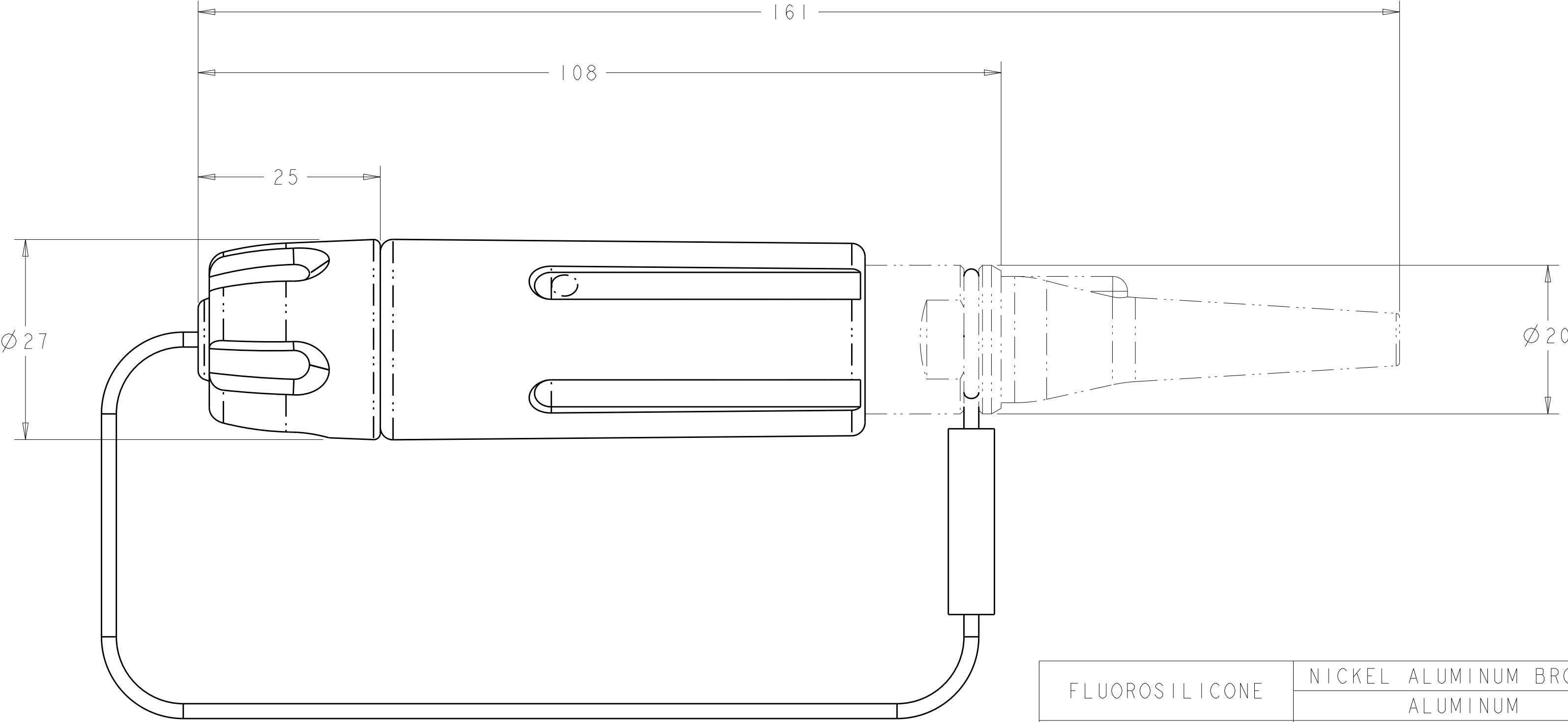
P	LTR	DESCRIPTION	DATE	DWN	APVD
	A1	ECR-15-000727	16JAN2015	KG	DW

1. ASSEMBLY SHOWN FOR REFERENCE ONLY.  
SHIPPED LOOSE PIECE AS SHOWN ON PAGE 2.
2. ALL ASSEMBLY DIMENSIONS ARE FOR REFERENCE ONLY.
3. THIS PRODUCT HAS NOT COMPLETED VALIDATION TESTING.
4. COMPLETE THE CONNECTOR ASSEMBLY BY ADDING EACH OF THE FOLLOWING PRO BEAM JR KITS:

A. EXPANDED BEAM INSERT ASSEMBLY KIT

B. CABLE ADAPTER KIT, SIZED TO THE CABLE JACKET DIAMETER

C. FERRULE KIT, ONE PER FIBER



VIEW SHOWN WITH  
CABLE ADAPTER KIT INSTALLED  
AS PHANTOM LINES FOR VISUAL  
AND DIMENSIONAL PURPOSES ONLY

FLUOROSILICONE	NICKEL ALUMINUM BRONZE	1918937-4
	ALUMINUM	1918937-3
EPDM	NICKEL ALUMINUM BRONZE	1918937-2
	ALUMINUM	1918937-1
RUBBER GRIP MATERIAL	HOUSING ALLOY	PART NUMBER

THIS DRAWING IS A CONTROLLED DOCUMENT.

DWN  
K. GLATFELTER  
CHK  
D. WERTMAN  
APVD  
D. WERTMAN

01NOV2006  
02JUN2008  
02JUN2008

DIMENSIONS:  
mm

MATERIAL  
-  
-

TOLERANCES UNLESS OTHERWISE SPECIFIED:

0 PLC ±

1 PLC ±

2 PLC ±

3 PLC ±

4 PLC ±

ANGLES ±

FINISH  
HARD ANODIZE (AL ONLY)

PRODUCT SPEC  
-

APPLICATION SPEC  
-

WEIGHT  
-

Customer Drawing

TE Connectivity

NAME  
CONNECTOR SHELL KIT, PLUG, PRO BEAM JR.

SIZE  
A2

CAGE CODE  
00779

DRAWING NO  
C-1918937

RESTRICTED TO  
-

SCALE  
2:1

SHEET  
1

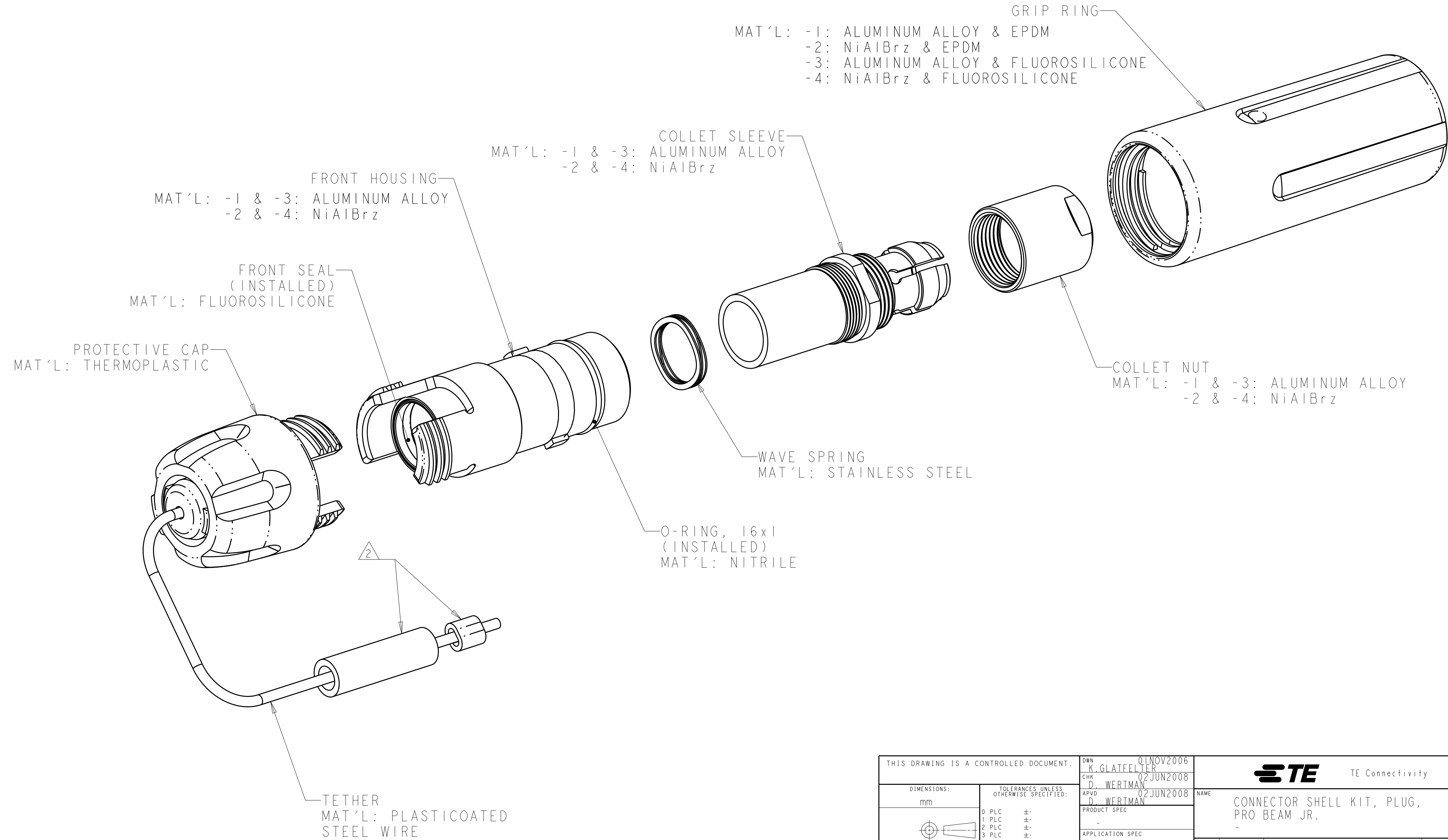
OF  
2

REV  
A1

1471-9 (3/13)

REVISIONS					
P	LTR	DESCRIPTION	DATE	DWN	APVD
	-	SEE SHEET 1	-	-	-

1. SHIPPED LOOSE PIECE AS SHOWN.
2. TETHER ATTACHING LOOP TO BE COMPLETED ONTO CONNECTOR DURING TERMINATION ASSEMBLY.



THIS DRAWING IS A CONTROLLED DOCUMENT.		DWN K. GLATFELTER 01NOV2006	TE Connectivity		
DIMENSIONS:		CHK D. WERTMAN 02JUN2008			
TOLERANCES UNLESS OTHERWISE SPECIFIED:		APVD D. WERTMAN 02JUN2008	NAME CONNECTOR SHELL KIT, PLUG, PRO BEAM JR.		
mm		PRODUCT SPEC	SIZE		
0 PLC ±		APPLICATION SPEC	CAGE CODE		
1 PLC ±		WEIGHT	DRAWING NO		
2 PLC ±			RESTRICTED TO		
3 PLC ±			A200779		
4 PLC ±			C-1918937		
ANGLES ±			SCALE		
FINISH			1:1		
HARD ANODIZE (AL ONLY)		Customer Drawing	SHEET		
			2 OF 2		
			REV		
			A1		

# Mouser Electronics

Authorized Distributor

Click to View Pricing, Inventory, Delivery & Lifecycle Information:

[TE Connectivity:](#)

[1918937-1](#)