



FCIconnect.com

Copyright FCI

PRODUCT NUMBER BPS8B96ZZD-CO---LF		
WIRE ACCOMODATION		
PRODUCT NUMBER	WIRE SIZE	CONTACT IDENTIFICATION
BPS8B96ZZDOCO---	AWG28/30	0
BPS8B96ZZD2CO---	AWG24/26	2

CONTACT PLATING	
PRODUCT NUMBER	PERFORMANCE LEVEL PER DIN41612
Z0	CLASS 3
Z1	CLASS 2
E9	CLASS 1

WITH "LF" SUFFIX	LEAD FREE OR RoHS COMPATIBLE PRODUCT
WITHOUT SUFFIX	LEADED PRODUCT

NOTES:-
1. THE "LF" PRODUCTS MEET EUROPEAN UNION DIRECTIVES AND OTHER COUNTRY REGULATIONS AS DESCRIBED IN GS-22-008
2. LEAD FREE OR RoHS DIRECTIVE LABELING TO BE PROVIDED AS PER GS-14-920 FOR RoHS COMPATIBLE VERSION.

PERFORMANCES CHARACTERISTICS

VOLTAGE RATING : 250 VAC (rms)
CURRENT RATING : 1,5 A AT 25 °C, 1 A AT 70 °C.
INSULATION RESISTANCE : 1000 MΩ INITIAL, 100 MΩ MIN. AFTER TEST
DIELECTRIC WITH-
STANDING VOLTAGE : 1000 VAC (rms).
CONTACT RESISTANCE : 15 mΩ MAX. INITIAL, 5 mΩ MAX. RISE OF INITIAL VALUE AFTER TEST.
OPERATING TEMPERATURE*: -40 °C TO +125 °C.
INSERTION FORCE : 1 N MAX./CONTACT.
WITHDRAWAL FORCE : 0,2 N MIN./CONTACT.
*DEPENDING ON THE CABLE, THE MAX. TEMPERATURE CAN BE LOWER.
FOR STANDARD PVC INSULATED CABLE : 105 °C MAX.

CONSTRUCTION

BODY MATERIAL : GLASS-REINFORCED THERMOPLASTIC (UL94V-0).
COVER MATERIAL : POLYPHENYLENE (PPO), COLOUR : BLACK.
CONTACT MATERIAL : PHOSPHOR BRONZE.
CONTACT FINISH : Au OVER Ni IN CONTACT AREA.
SnPb ON I.D.C. TERMINAL FOR LEADED PRODUCTS
Sn (MATTE TIN) ON I.D.C. TERMINAL FOR LEAD FREE PRODUCTS
Z0 : PERFORMANCE LEVEL PER DIN41612 CLASS 3
Z1 : PERFORMANCE LEVEL PER DIN41612 CLASS 2
E9 : PERFORMANCE LEVEL PER DIN41612 CLASS 1
OTHERS : CONSULT FCI

TIE-WRAP : OPTIONAL (PART N°. TF4)

PART NUMBERS

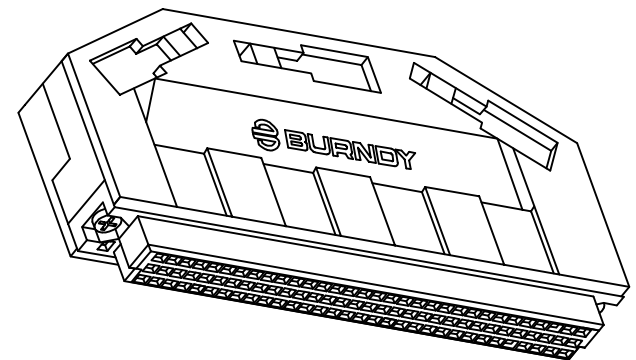
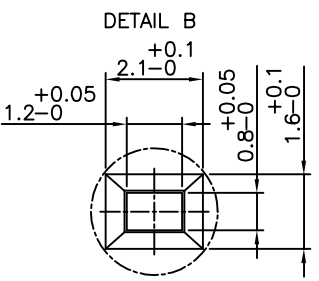
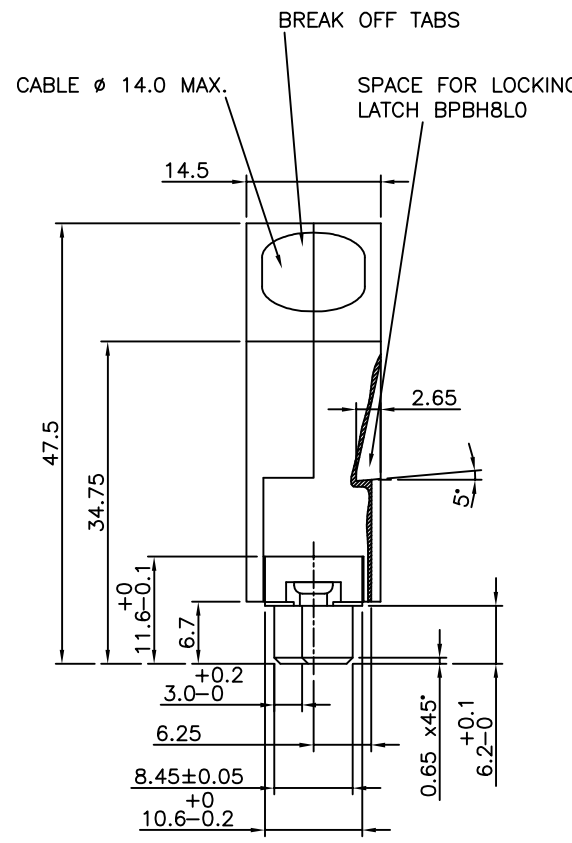
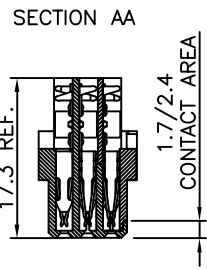
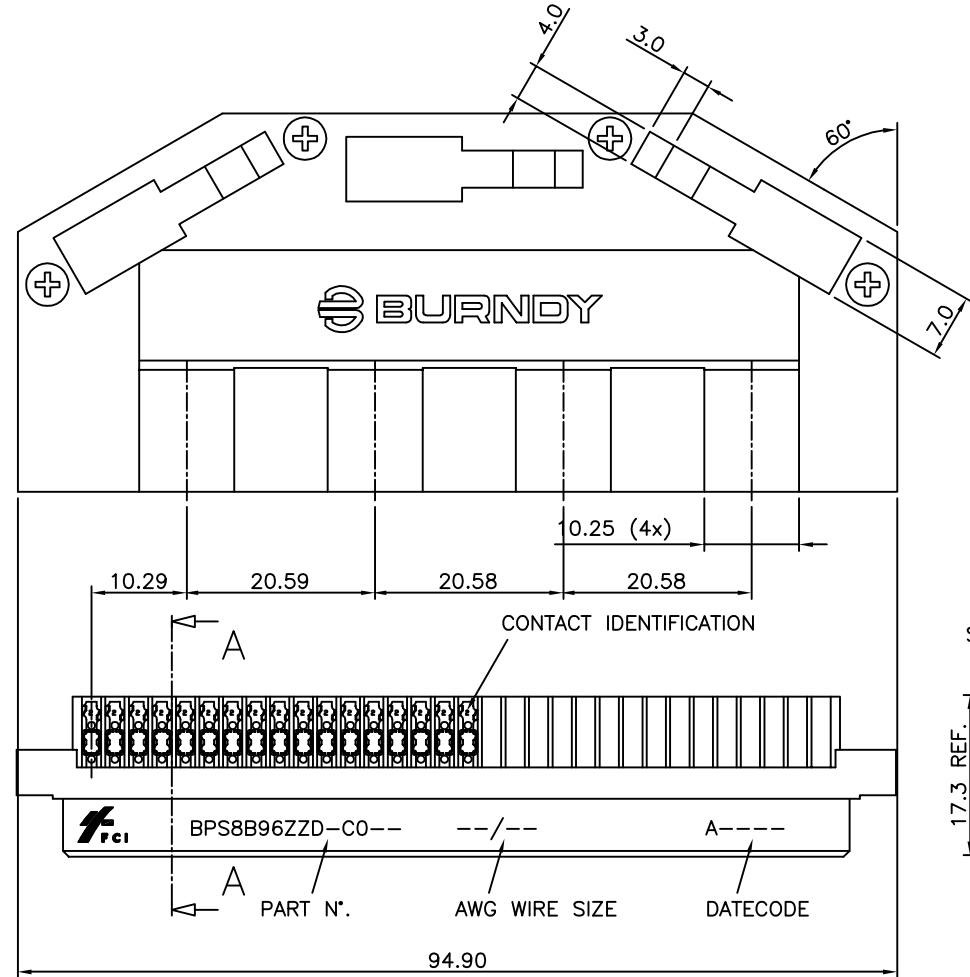
BPS8B96ZZDOCO--- CONNECTOR FOR WIRE SIZE AWG28, AWG30.
(CONTACT IDENTIFICATION : 0).
BPS8B96ZZDOCO---LF CONNECTOR FOR WIRE SIZE AWG28, AWG30.
(CONTACT IDENTIFICATION : 0).
BPS8B96ZZD2CO--- CONNECTOR FOR WIRE SIZE AWG24, AWG26
(CONTACT IDENTIFICATION : 2).
BPS8B96ZZD2CO---LF CONNECTOR FOR WIRE SIZE AWG24, AWG26
(CONTACT IDENTIFICATION : 2).

AWG WIRE SIZE MARKING

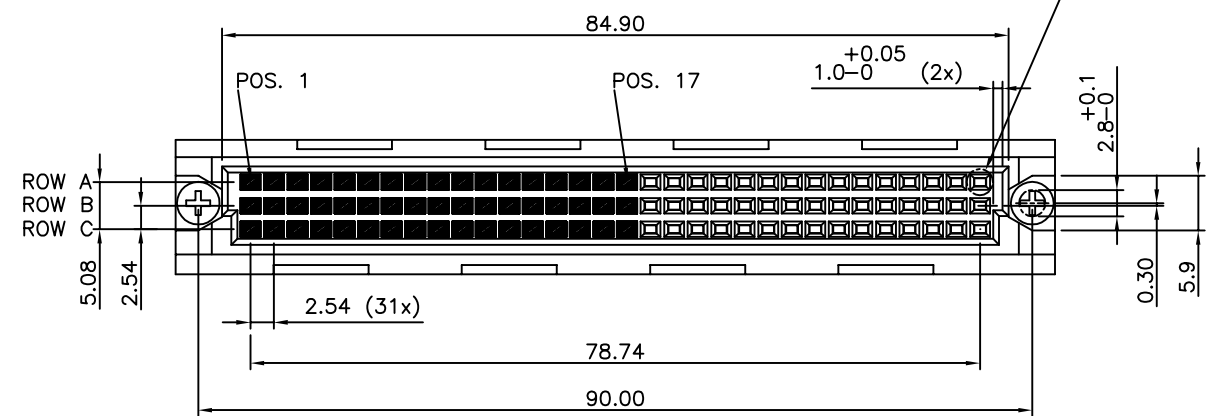
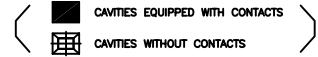
BPS8B96ZZDOCO--- : 28/30.
BPS8B96ZZDOCO---LF : 28/30.
BPS8B96ZZD2CO--- : 24/26.
BPS8B96ZZD2CO---LF : 24/26.


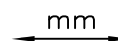

DATECODE MARKING

A+ YEAR & WEEKCODE, EXAMPLE : F9950.



CONTACT ARRANGEMENT



mat'l. code SEE NOTE				surface ISO 1302 ✓		tolerance ISO 406 ISO 1101		projection 		product family BPS8										
ltr	ecn no	dr	date	tolerances unless otherwise specified						title ASSY BPS8 96 POS. A,C LOADED SPECIAL										
A	F00819	DLE	2000-10-23	angles	linear	0.1±0.2														
B	I05-0156	MINI	2005-09-06			0.01±0.1														
C	I06-0067	MINI	2006-06-01	±1°				scale —												
				dr	D.LEGRAND		2000-10-23				dwg no				sheet 1 of 1				size	
				engr	J.F.NOTTEAU		2000-10-23				55369				A3					
				chr	RAKHEE GEORGE		2006-06-01													
				appd	RAKHEE GEORGE		2006-06-01													
sheet index		revision sheet		C	1															

Mouser Electronics

Authorized Distributor

Click to View Pricing, Inventory, Delivery & Lifecycle Information:

[FCI / Amphenol:](#)

[BPS8B96ZZD2C0Z0LF](#)