

4

3

2

1

THIS DRAWING IS UNPUBLISHED.

RELEASED FOR PUBLICATION

© COPYRIGHT

ALL RIGHTS RESERVED.

LOC DIST


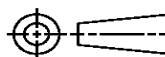
REVISIONS

P	LTR	DESCRIPTION	DATE	DWN	APVD

REPLACED BY OCEAN STYLE APPLICATOR PART NUMBER

FOR REPLACEMENT PARTS FOR APPLICATOR REFER TO ADDITIONAL PAGE(S). SPARE PARTS KIT (IF LISTED) WILL REMAIN AVAILABLE.

THE REPLACEMENT OCEAN STYLE APPLICATOR HAS THE SAME TERMINATOR/PRESS INTERFACE AS APPLICATOR

THIS DRAWING IS A CONTROLLED DOCUMENT.		DWN	 TE Connectivity		
DIMENSIONS:		CHK			
TOLERANCES UNLESS OTHERWISE SPECIFIED:		APVD	NAME		
		PRODUCT SPEC	RESTRICTED TO		
		APPLICATION SPEC	SIZE	CAGE CODE	DRAWING NO
MATERIAL	FINISH	WEIGHT	A3	C-	
		SCALE	SHEET	OF	REV

DRAWING MADE IN THIRD ANGLE PROJECTION

1528017 1528017

/home/us016926/DMTECnod

PART NUMBER	REV	FIRST USED	TERMINATOR	FEED TYPE	DESCRIPTION
1528017-1	G	-	LEADMAKER	MECH POST FEED	CUTS CARRIER
1528017-2	G	-	BENCH	MECH PRE FEED	CUTS CARRIER
1528017-6	G	-	LEADMAKER	MECH POST FEED	CONTINUOUS CARRIER
7-1528017-1	G	-	LEADMAKER	MECH POST FEED	-1 AND SPARE PARTS
7-1528017-2	G	-	BENCH	MECH PRE FEED	-2 AND SPARE PARTS
7-1528017-6	G	-	LEADMAKER	MECH POST FEED	-6 AND SPARE PARTS
7-1528017-7	E	-	-	-	SPARE PARTS KIT

CRIMP DATA (AMP TERMINAL)

TERMINAL NAME: 2.8MM SENSOR - FLAT TYPE RECEPTACLE

CRIMP	SIZE	TYPE	RANGE
WIRE	2.03 [0.080 IN]	F	0.50mm ² - 1.00mm ²
INSUL	4.06 [1.160 IN]	0	3.4 MAX [1.134 IN MAX]

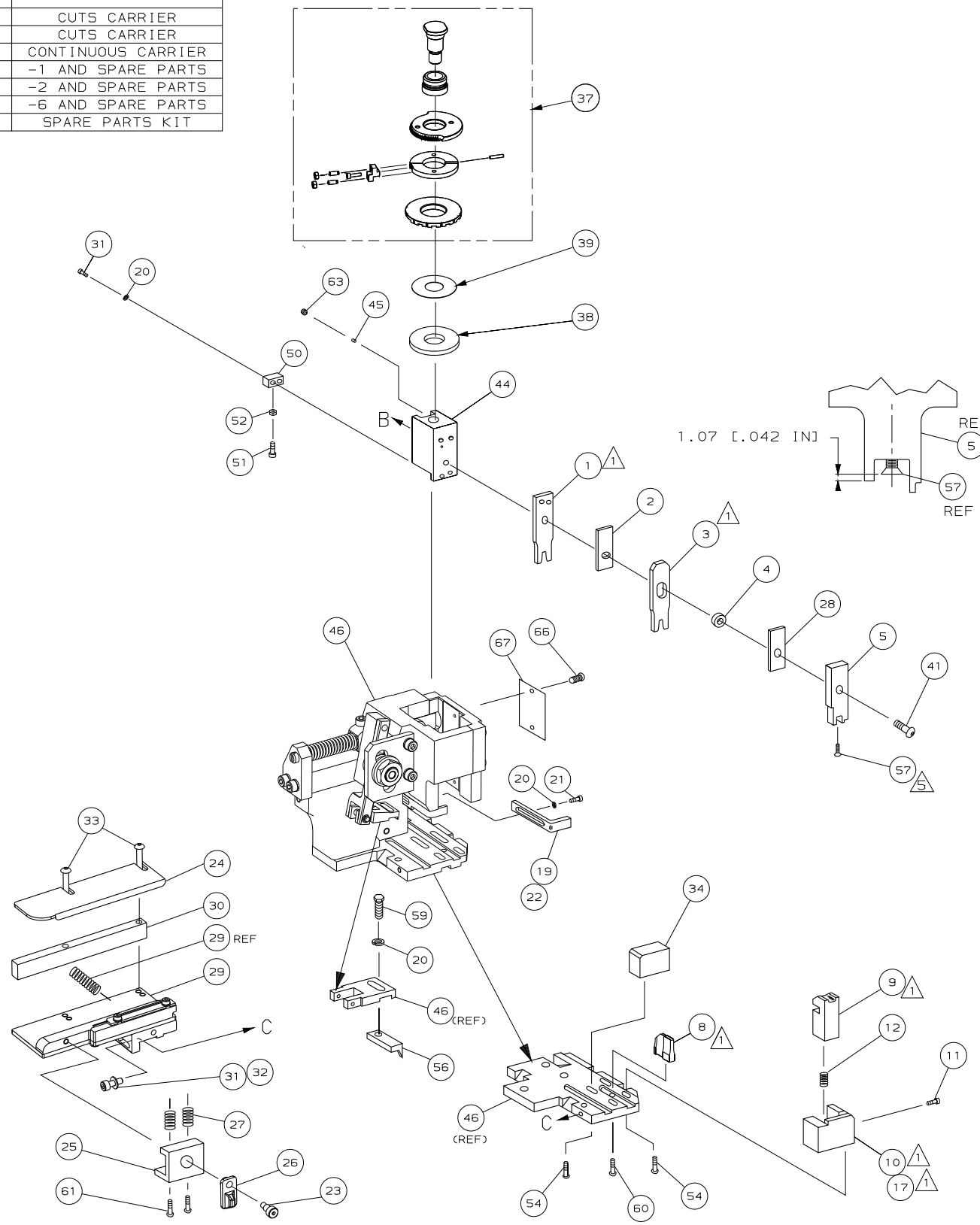
WIRE STRIP LENGTH: 4.2-4.8 [1.165-.189 IN] | APPL INSTRUCTION: 408-8322 & 408-8490

TERMINAL 114-18144-0 (A) 114-18148-1 (C) | FEED: 12.0 [1.472 IN]

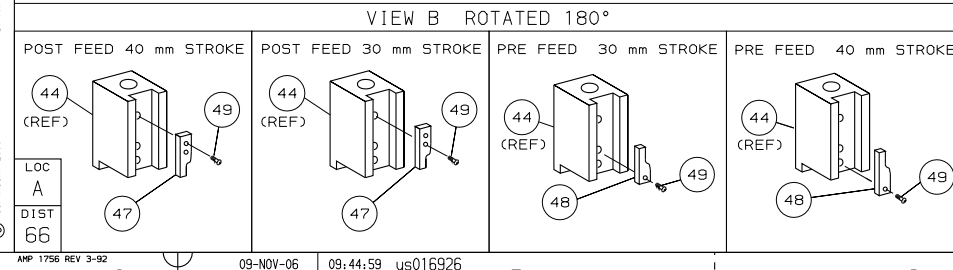
TERMINALS APPLIED

TERMINAL	SEAL	-	-	-
968087 (B)	828904-1	-	-	-
967542 (A)	828904-1	-	-	-
968855 (C)	828904-1	-	-	-

WIRE SIZE	CRIMP HEIGHT	REF SETTING
1.00mm ²	1.36 ±0.05 [0.053 ±.002 IN]	A 5
0.75mm ²	1.27 ±0.05 [0.050 ±.002 IN]	B 1
0.50mm ²	1.18 ±0.05 [0.046 ±.002 IN]	B 7



- 1. RECOMMENDED SPARE PARTS.
- 2. GREASE RAM, CAM, CAM FOLLOWER AND FEED ROD LIGHTLY.
- 3. LUBRICATE DAILY PER THE APPLICATOR INSTRUCTION SHEET SUPPLIED WITH THE APPLICATOR.
- 4. THIS APPLICATOR APPLIES TERMINAL WITH A SEAL.
- 5. APPLY TORQ-SEAL IN ALLEN SOCKET TO FILL HOLE AFTER FLAT HD HAS BEEN ADJUSTED TO CORRECT HEIGHT AT QUALIFICATION. APPLY #1-23419-5 LOC-TITE TO THREADS.



*** WARNING:**
ON INSTALLATION, SET WIRE DISC TO LARGEST WIRE SIZE SETTING. USE OF SETTINGS BELOW MIN REQ'D CRIMP HEIGHT SETTING WILL CAUSE DAMAGE TO CRIMP TOOLING.

QTY	REQD	PER	ASSY	PART NO	DESCRIPTION	ITEM NO		
-	1	1	1	1	1	1528017	PRINT, APPLICATOR LOG SHEET	73
-	1	1	1	1	1	1338705-3	DOCUMENTATION PACKAGE	71
-	1	1	1	1	1	461264-5	PLATE, IDENTIFICATION	67
-	2	2	2	2	2	21017-2	SCR, DRIVE (#2X.19) ID PLATE	66
-	1	1	1	1	1	3-18031-0	SCR, SKT SET (M6X6) RAM	64
-	2	2	2	2	2	2-18032-5	SCR, SET (M5X20) DRAG	61
-	1	1	1	1	1	18024-7	SCR, BHC (M4X10) ANVIL	60
-	1	1	1	1	1	5-18022-2	SCR, HEX (M4X8) FEED FINGER	59
-	1	1	1	1	1	985575-3	SCR, FHC (M3X10) DEP	58
-	1	1	1	1	1	1338685-1	PAWL, FEED	57
-	4	4	4	4	4	18024-8	SCR, BHC (M4X12) SHEAR HOLDER	55
-	1	1	1	1	1	18030-1	NUT, HEX (M3) HOLD DOWN	54
-	1	1	1	1	1	811242-5	BUMPER, HOLDDOWN	52
-	1	1	1	1	1	690753-2	SPACER, TONKER	51
-	1	1	1	1	1	18024-3	SCR, BHC (M3X10) CAM	49
-	1	1	1	1	1	1338675-1	CAM, PRE FEED 30 & 40 mm ST	48
-	1	1	1	1	1	1338676-1	CAM, POST FEED 30 & 40 mm ST	47
-	1	1	1	1	1	1320999-3	APPLICATOR BASIC SUBASSY	46
-	1	1	1	1	1	690191-1	PLUG, NYLON	45
-	1	1	1	1	1	1338660-1	RAM	44
-	1	1	1	1	1	2-18024-6	SCR, BHC (M8X25) RAM	41
-	1	1	1	1	1	690125-1	SHIM SUBASSY	39
-	1	1	1	1	1	469367-8	SPACER, FINE ADJUST	38
-	1	1	1	1	1	879103-3	FINE ADJUST HEAD SUBASSY	37
-	1	1	1	1	1	1320934-4	SUPPORT, TERMINAL	34
-	2	2	2	2	2	1-18024-0	SCR, BHC (M4X20) STRIP GUIDE	33
-	1	1	1	1	1	18027-2	WASHER, FLAT (M4)	32
-	3	3	3	3	3	1-18023-2	SCR, SKT CAP (M4X12) MOUNT BLOCK	31
-	1	1	1	1	1	1320908-8	SPACER, STRIP GUIDE	30
-	1	1	1	1	1	1633073-2	STRIP GUIDE PLATE ASSY	29
-	1	1	1	1	1	1-455888-5	SPACER, FRONT SHEAR DEP	28
-	2	2	2	2	2	1-22284-0	SPRING, DRAG	27
-	1	1	1	1	1	356835-1	LEVER, DRAG RELEASE	26
-	1	1	1	1	1	240792-1	DRAG, TERMINAL	25
-	1	1	1	1	1	1320928-1	GUIDE, STRIP (REAR)	24
-	1	1	1	1	1	980371-4	SCR, SHC SHLD	23
-	1	1	1	1	1	690472-2	STRIPPER	22
-	1	1	1	1	1	1-18023-1	SCR, SHC (M4X10) STRIPPER	21
-	4	4	4	4	4	18025-2	WASHER, LOCK (M4) STRIPPER	20
-	1	1	1	1	1	690472-1	STRIPPER	19
-	1	1	1	1	1	1338684-2	HOLDER, SHEAR, FRONT (NO-CUT)	17
-	1	1	1	1	1	3-22280-3	SPRING, SHEAR	12
-	1	1	1	1	1	356885-5	STOP, SHEAR	11
-	1	1	1	1	1	1-1320921-0	HOLDER, SHEAR, FRONT (CUT)	10
-	1	1	1	1	1	318707-1	SHEAR, FLOAT (FRONT)	9
-	1	2	2	2	2	1333204-1	ANVIL	8
-	1	1	1	1	1	1338680-2	DEPRESSOR, SHEAR (FRONT)	5
-	1	1	1	1	1	1-238011-0	SPACER, BLOCK CRIMPER	4
-	1	2	2	2	2	1-904741-9	CRIMPER, INSULATION	3
-	1	1	1	1	1	1-455888-5	SPACER, CRIMPER	2
-	1	2	2	2	2	1-456405-6	CRIMPER, WIRE	1

QTY REQD PER ASSY

REV	DATE	DESCRIPTION	BY	APP
G	06-02-06	ECR-06-026421	TE	11-06
F	0150-0061-04		BH	JAN04
E	0150-1360-03		BH	DEC03
D	0150-1127-03 ACT		CE	OCT03
D	0150-0981-03		BH	SEP03
C2	0150-0884-03		CE	AUG03
C1	0150-0467-03		RK	MAY03
C	ECN 0150-0830-02		DS	6-02
B	0150-0200-02		BH	FEB02
P	0150-0200-02		APP	DATE

REVISION RECORD

PARTS LIST

DR	APP	HT	TR	FIN
L.LOFTHOUSE	10MAY01	10MAY01		
CHK	REL	06JUL01		

NAME: SIDE FEED HD-I F/ADJ APPL

SCALE: 1:1

DWG NO: 1528017

SHEET: 1 of 1

REV: G

CUSTOMER AND ASSEMBLY DRAWING

THIS DRAWING IS A CONTROLLED DOCUMENT

LAYOUT L1426001 SET UP GAGE 458637-3

RELEASED FOR PUBLICATION BY AMP INCORPORATED. ALL RIGHTS RESERVED.

THIS DRAWING IS UNCONTROLLED. © COPYRIGHT 2000 AMP 1756 REV 3-92

1528017

C

B

A

Mouser Electronics

Authorized Distributor

Click to View Pricing, Inventory, Delivery & Lifecycle Information:

[TE Connectivity:](#)

[1528017-1](#)