

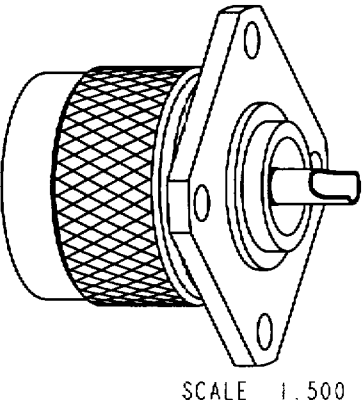
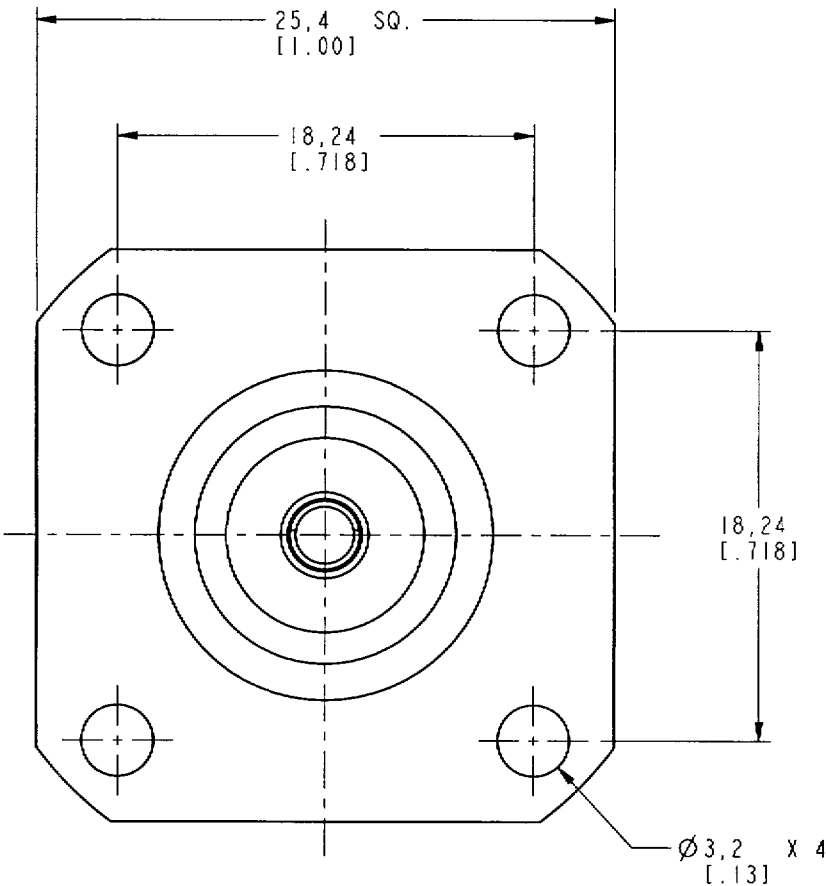
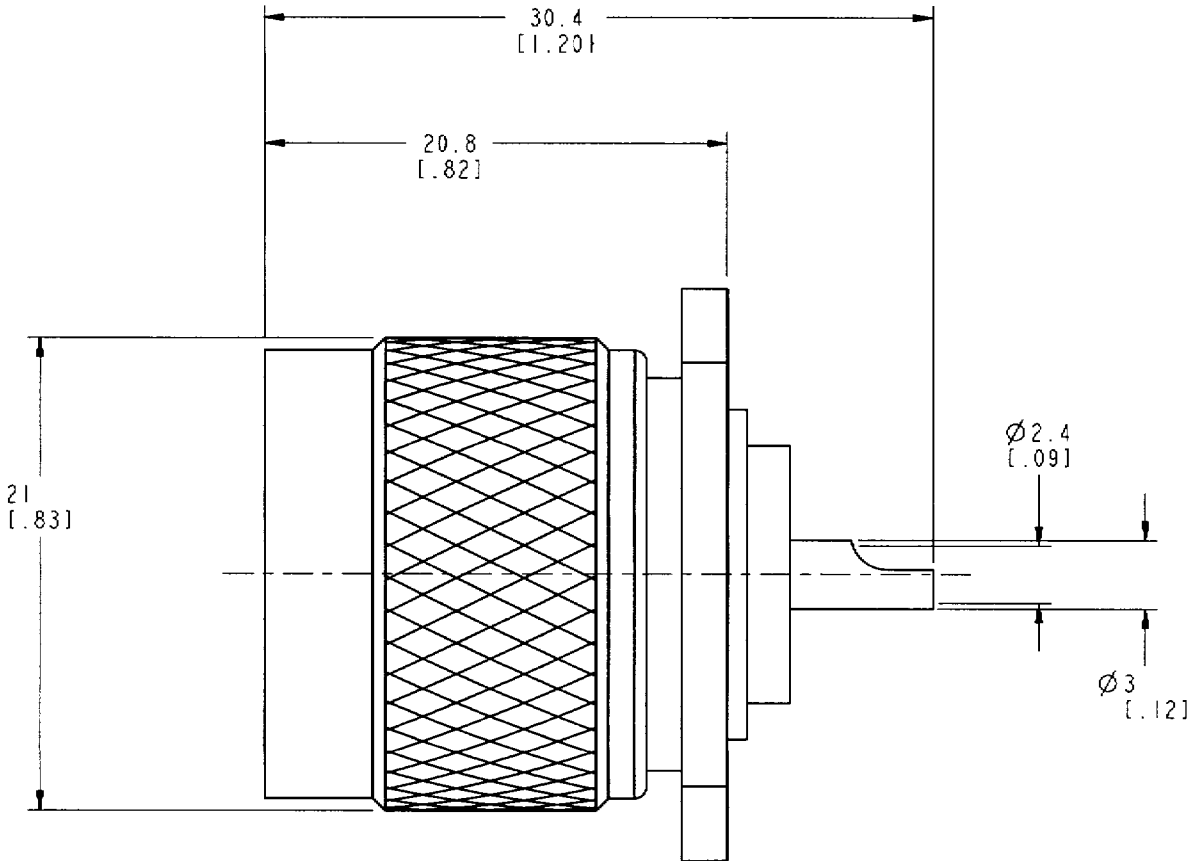
NOTES:

1. MATERIALS OF CONSTRUCTION:  
SHELL, BODY/FLANGE, & CONTACT BODY = BRASS, NICKEL PLATED  
CONTACT PIN = BRASS, GOLD PLATED  
RETAINER RING = STAINLESS STEEL, NATURAL  
INSULATOR = TEFLON PER MIL-P-19468  
GASKET = SILICONE RUBBER, COLOR RED

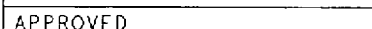
49000-RFX

REVISIONS

DRAWING NO.	REV	DESCRIPTION	DATE	ECO	APPR
THIRD ANGLE PROJ.	A	RELEASE TO MFG.	11/28/00	43603	CPM



CUSTOMER OUTLINE DRAWING  
FOR REFERENCE ONLY

UNLESS OTHERWISE SPECIFIED, DIMENSIONS ARE IN INCHES AND TOLERANCES ARE: 0.5 - 6mm 6 - 30mm 30 - 120mm ±0.2mm ±0.4mm ± 0.6mm	MATERIAL	DRAWN C. McGRATH	DATE 11/14/00	TITLE 'N' PANEL RECEPTACLE PLUG		Amphenol Amphenol Corporation Communication and Network Products Division Danbury, CT U.S.A. 06810			
	REFERENCE  GEN# 49000-SRFX_ASSY	ENGINEER T. AUBIN	DATE 11/14/00						
NOTICE - These drawings, specifications, or other data (1) are, and remain the property of Amphenol Corp. (2) must be returned upon request; and (3) are confidential and not to be disclosed to any person other than those to whom they are given by Amphenol Corp. The furnishing of these drawings, specifications, or other data by Amphenol Corp. or to any other person for any purpose is not to be regarded by implication or otherwise in any manner licensing, granting rights or permitting such holder or any other person to manufacture, use or sell any product, process or design, patented or otherwise, that may in any way be related to or disclosed by said drawings, specifications, or other data.		APPROVED 	DATE 11/28/00			SCALE: 3.0:1		SHEET 2 OF 2	
		CAD FILE I:\N\49000-RFX	CODE ID 74868	DWG SIZE B	DRAWING NO. 49000-RFX		REV A		

# Mouser Electronics

Authorized Distributor

Click to View Pricing, Inventory, Delivery & Lifecycle Information:

[Amphenol:](#)

[49RFX](#)