

“High Frequency Ceramic Solutions”

2.45 GHz Band Pass Filter

P/N 2450BP39C100A

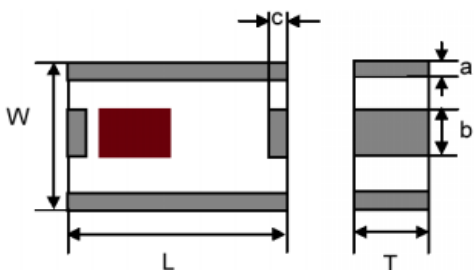
Detail Specification Page 1 of 2

| Part Number | Frequency (MHz) | Insertion Loss | Attenuation (min.) | Return Loss | Ripple |
|----------------|-----------------|----------------|--|-------------|-------------|
| 2450BP39C100A_ | 2450 ± 50 | 2.5 dB max | 40 dB @ 880 - 915 MHz 42 dB @ 1.71- 1.99 GHz 30 dB @ 2.1 GHz 30 dB @ 4.8 - 5.0 GHz 35 dB @ 7.2 - 7.5 GHz | 9.5 dB min. | 0.7 dB min. |

| Input Power | Group Delay | Impedance | Operating Temperature Range |
|---------------|-------------|-----------|-----------------------------|
| 500 mWatt max | 5 nsec max | 50 Ω | -40 to +85°C |

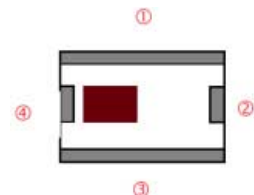
Mechanical Dimensions

| | L | W | T | a | b | c |
|--------|--------------|--------------|--------------|--------------|--------------|--------------|
| Inches | 0.098 ± .008 | 0.079 ± .008 | 0.035 ± .004 | 0.012 ± .008 | 0.024 ± .008 | 0.012 ± .008 |
| mm | 2.5 ± 0.2 | 2.0 ± 0.2 | 0.9 ± 0.1 | 0.3 ± 0.2 | 0.6 ± 0.2 | 0.30 ± 0.2 |



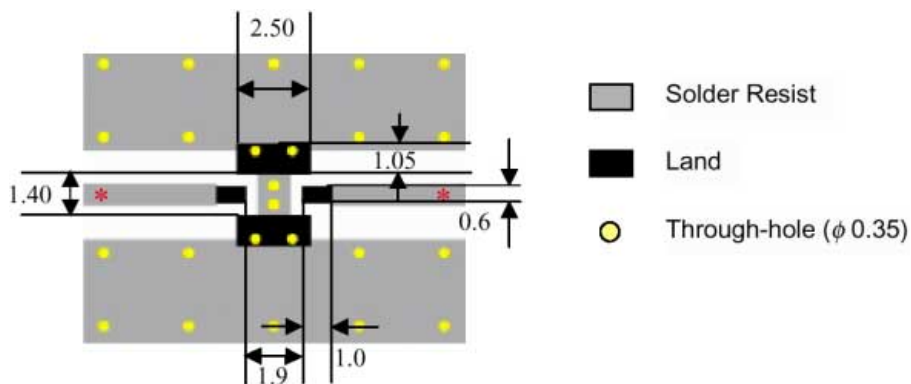
Terminal Configuration

| No. | Function | No. | Function |
|-----|----------|-----|----------|
| 1 | GND | 3 | GND |
| 2 | OUT | 4 | IN |



Mounting Considerations

Line width should be designed to provide 50Ω impedance matching characteristics.



Johanson Technology, Inc. reserves the right to make design changes without notice.
All sales are subject to Johanson Technology, Inc. terms and conditions.

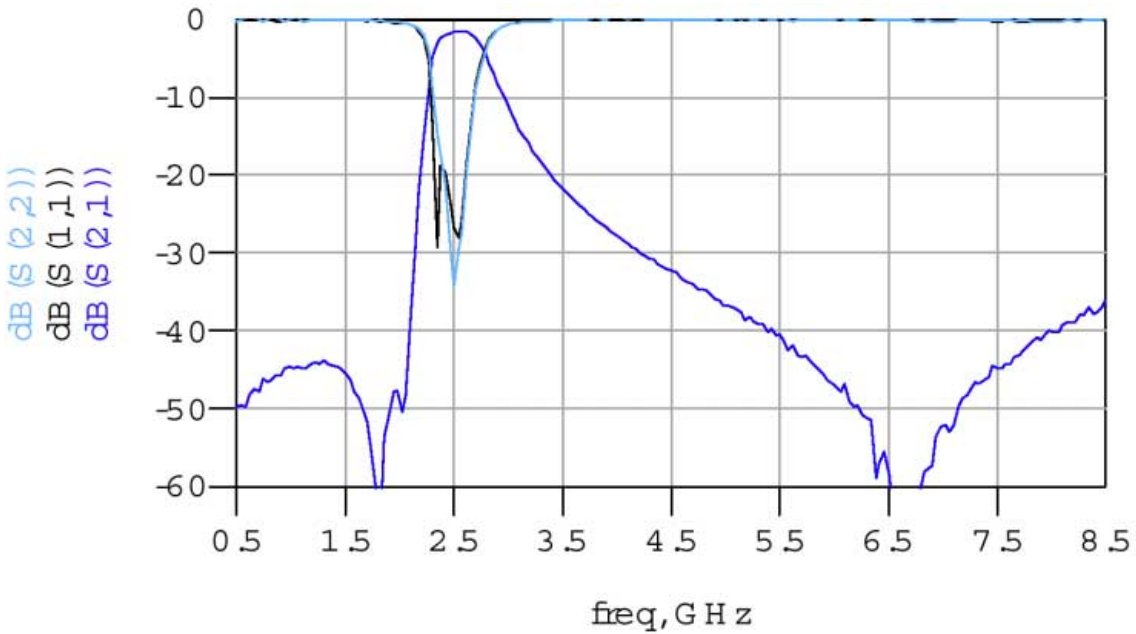
"High Frequency Ceramic Solutions"

2.45 GHz Band Pass Filter

P/N 2450BP39C100A

Detail Specification Page 1 of 2

Typical Transmission / Return Loss: P/N 2450BP39C100A



Mouser Electronics

Authorized Distributor

Click to View Pricing, Inventory, Delivery & Lifecycle Information:

[Johanson:](#)

[2450BP39C100AE](#)