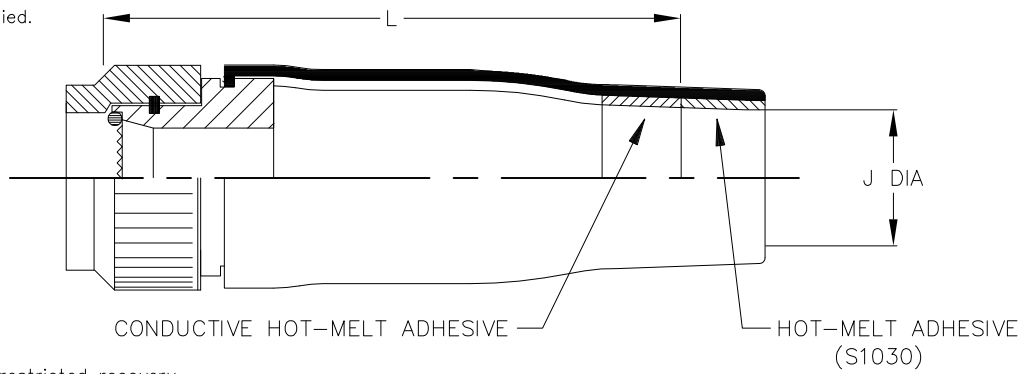


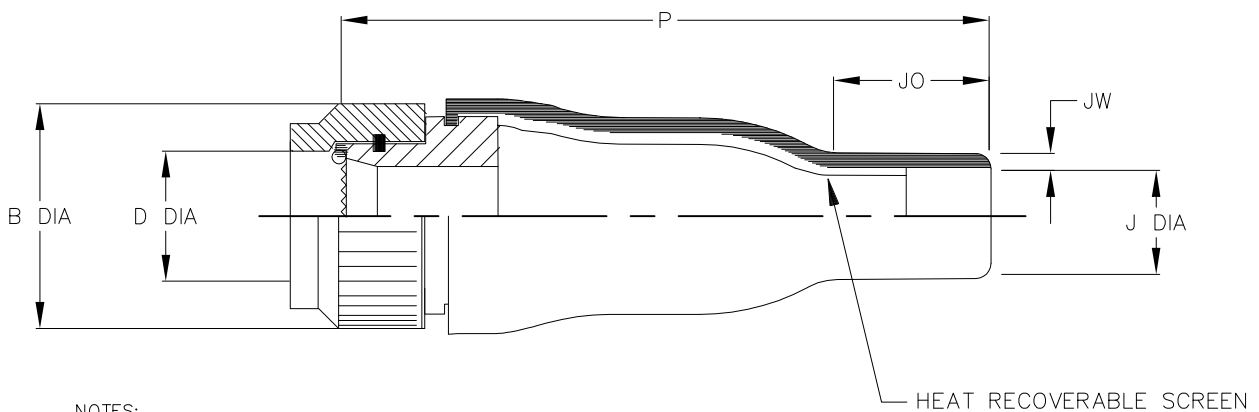
REVISIONS

P	LTR	DESCRIPTION	DATE	DWN	APVD
5		RELEASED AS PER ECO-17-009529	03JUL2017	KH	MP

a) Part as supplied.



b) Part after unrestricted recovery.



NOTES:

Raychem Connector Code: 40
 Connector Series: MIL-C-38999 SERIES 3 & 4
 Adaptor Series: 208M7**-01-W**-K-NS
 Nickel Aluminium Bronze to BS2874CA104 OR ASTM C 63200 OR ASTM B150
 Unplated, Shotblast - Glass Bead
 Moulded Part Material: -100C (Black); Polyolefin/Silver Composites, semi-flexible
 ZEROHAL™ Low fire hazard

Kits to include cleaning tissue, 1 piece 100 grit emery cloth & packing piece.
 Kit to be used in conjunction with installation guide for straight assemblies.

Dimensions in mm [inches for reference]

Part No.	Shell Size	B DIA MAX	D DIA MIN	J		P ±10% b	L REF a	JO REF b	JW ±30% b
				MIN a	MAX b				
KTKK2610	A	19.2 [.76]	6.2 [.24]	7 [.28]	5.0 [.20]	57 [2.24]	51 [2.01]	15 [.59]	1.0 [.04]
KTKK2611	B	21.7 [.85]	9.3 [.37]	9 [.35]	6.0 [.24]	72 [2.83]	66 [2.60]	17 [.67]	1.0 [.04]
KTKK2612	C	25.5 [1.00]	12.9 [.51]	11 [.43]	7.2 [.28]	84 [3.31]	78 [3.07]	20 [.79]	1.0 [.04]
KTKK2613	D	29.3 [1.15]	14.1 [.56]	11 [.43]	7.2 [.28]	84 [3.31]	78 [3.07]	20 [.79]	1.0 [.04]
KTKK2614	E	31.9 [1.26]	18.8 [.74]	17 [.66]	8.5 [.33]	97 [3.82]	88 [3.46]	25 [.98]	1.0 [.04]
KTKK2615	F	35.7 [1.41]	18.8 [.74]	17 [.66]	8.5 [.33]	97 [3.82]	88 [3.46]	25 [.98]	1.0 [.04]
KTKK2616	G	38.2 [1.50]	23.6 [.93]	21 [.82]	10.0 [.39]	122 [4.80]	110 [4.33]	30 [1.18]	1.2 [.05]
KTKK2617	H	42.0 [1.65]	23.6 [.93]	21 [.82]	10.0 [.39]	122 [4.80]	110 [4.33]	30 [1.18]	1.2 [.05]
KTKK2618	J	44.6 [1.76]	30.9 [1.22]	29 [1.14]	15.8 [.62]	147 [5.79]	132 [5.20]	30 [1.18]	1.5 [.06]

THIS DRAWING IS UNPUBLISHED. ALL RIGHTS RESERVED. COPYRIGHT 2016 By TE Connectivity

DIMENSIONS:
mm [INCHES]

DWN K. HOLAL 14OCT2016
 CHK N. NAGAR 14OCT2016

MATERIAL SEE NOTES

FINISH SEE NOTES

TOLERANCES UNLESS OTHERWISE SPECIFIED:

APVD M. POPE 14OCT2016
 PRODUCT SPEC

NAME ADAPTOR ASSEMBLY



TE Connectivity

APPLICATION SPEC

SIZE A4 CAGE CODE 00779 DRAWING NO C-KTKK2610-2618

RESTRICTED TO

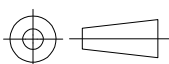
WEIGHT

CUSTOMER DRAWING

SCALE DNS

SHEET 1 OF 1

REV 5



Mouser Electronics

Authorized Distributor

Click to View Pricing, Inventory, Delivery & Lifecycle Information:

[TE Connectivity:](#)

[KTKK-2617](#)