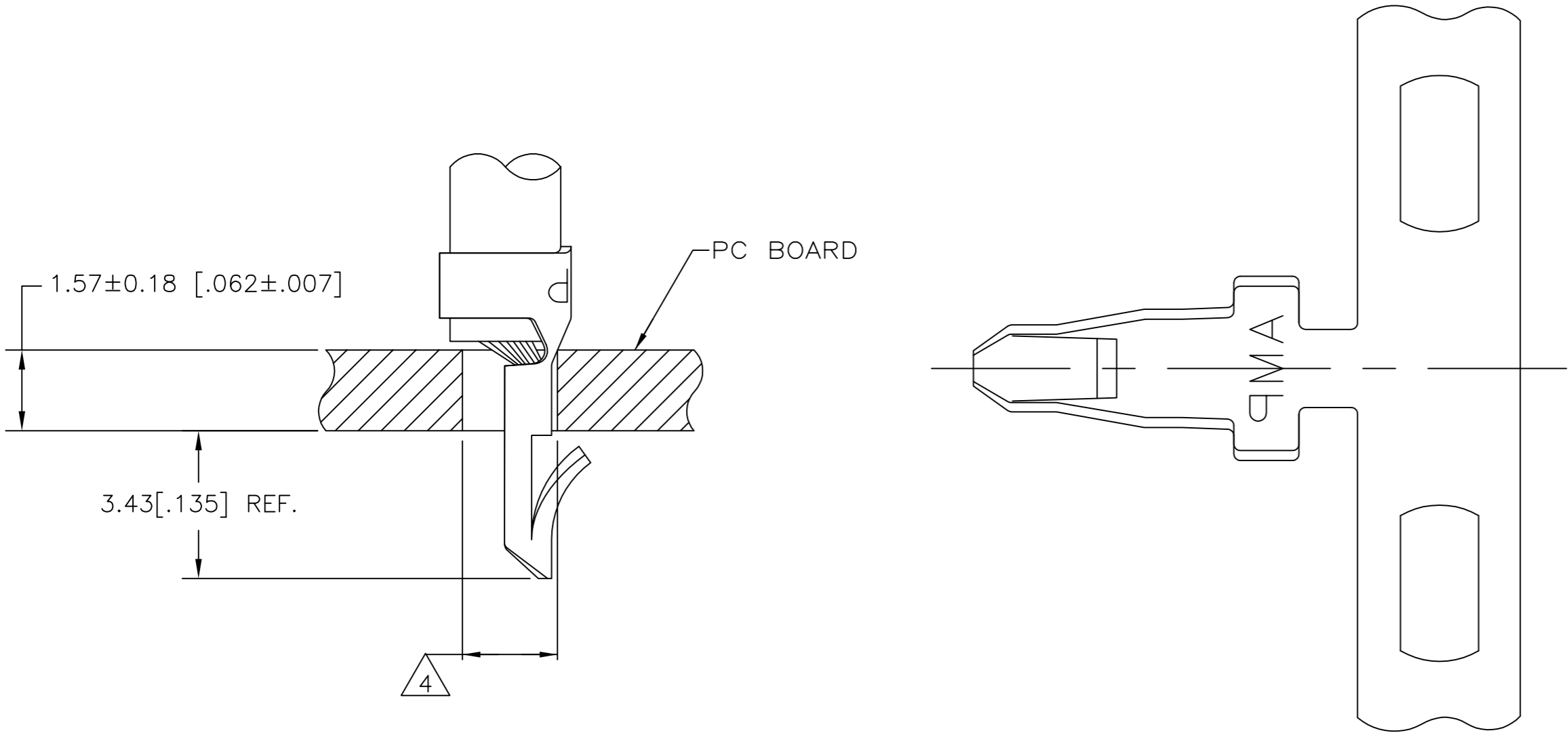
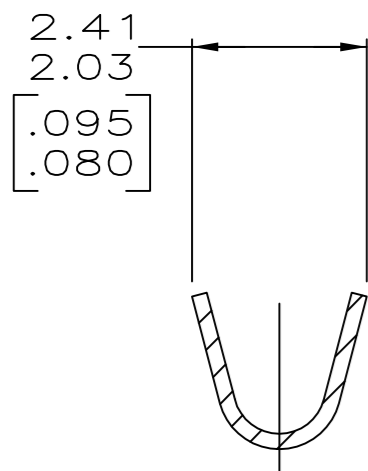
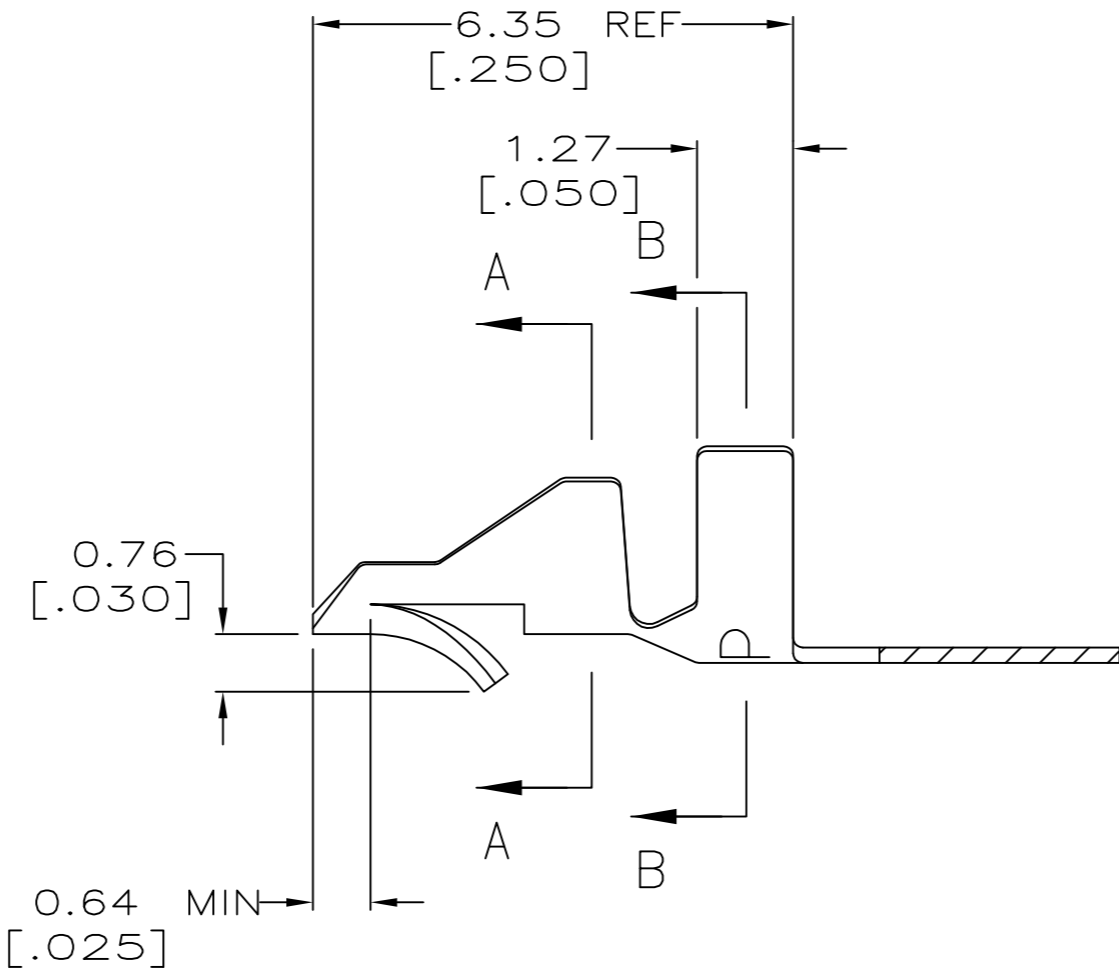
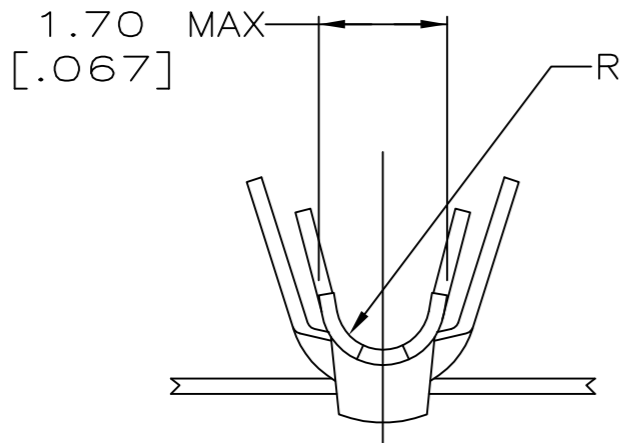


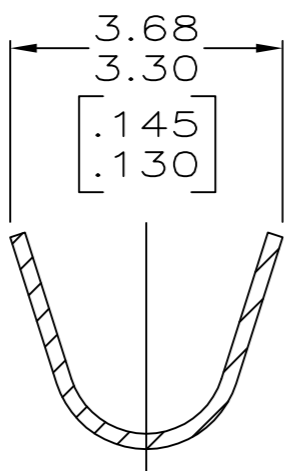
REVISIONS					
P	LTR	DESCRIPTION	DATE	DWN	APVD
	AB5	REVISED PER ECR-17-013215	18SEP17	J.Z	D.Z



- 1 PARTS COMPLY WITH AMP SOLDERABILITY SPEC 109-11-3.
- 2 PARTS COMPLY WITH AMP SOLDERABILITY SPEC 109-11-5.
- 3 PARTS COMPLY WITH AMP SOLDERABILITY SPEC 109-11-1.
- 4 HOLE DIAMETER TO BE 1.83±0.08 FOR WIRE 0.3-0.6mm2 (20-22 AWG) OR 1.96±0.08 FOR WIRE 0.8-0.9mm2 (18 AWG).
- 5 CARRIER STRIP TO HAVE 1.52 [.060] DIA PILOT HOLE.
- 6 0.00508 [.000200] MIN BRIGHT TIN-LEAD.
- 7 0.00318 [.000150] MIN MATTE TIN-LEAD OVER
0.00305 [.000120] MIN MATTE COPPER.
- 8 0.00305 [.000120] MIN TIN OVER
0.00102 [.000040] MIN NICKEL.
- 9 WIRE RANGE: 0.3 -0.9 mm² (22 - 18 AWG).
- 10 INSULATION RANGE: 1.52 - 2.79 [.060 - .110] DIA.
- 11 DIMENSIONS IN BRACKETS ARE IN INCHES.
- 12 0.00508 [.000200] MIN BRIGHT TIN.




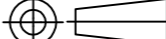
SECTION A-A



SECTION B-B

METRIC

1	12	0.20[.008] PH BRZ	3-350566-1
3 5	8	0.20[.008] BRASS	350566-7
3	8	0.20[.008] BRASS	350566-5
2	8	0.20[.008] BRASS	350566-3
1	12	0.20[.008] PH BRZ	350566-1
NOTES		FINISH	MATERIAL
			PART NO.

THIS DRAWING IS A CONTROLLED DOCUMENT.			DWN 20AUG2003 S. CARPENTER		 TE Connectivity						
			CHK 20AUG2003 J. ELLIS								
DIMENSIONS: INCHES		TOLERANCES UNLESS OTHERWISE SPECIFIED:		APVD 20AUG2003 J. ELLIS		NAME — MINI AMP-IN (TM)					
		0 PLC ±		PRODUCT SPEC							
		1 PLC ±		APPLICATION SPEC							
		2 PLC ±									
		3 PLC ± 0.13 [.005]		114-1016		SIZE	CAGE CODE	DRAWING NO		RESTRICTED TO	
		4 PLC ±		WEIGHT 0.000000		A2	00779	C=350566		—	
MATERIAL SEE TABLE		FINISH SEE TABLE		CUSTOMER DRAWING					SCALE 10:1	SHEET 1 of 1	REV AB5

Mouser Electronics

Authorized Distributor

Click to View Pricing, Inventory, Delivery & Lifecycle Information:

[TE Connectivity:](#)

[350566-7](#)