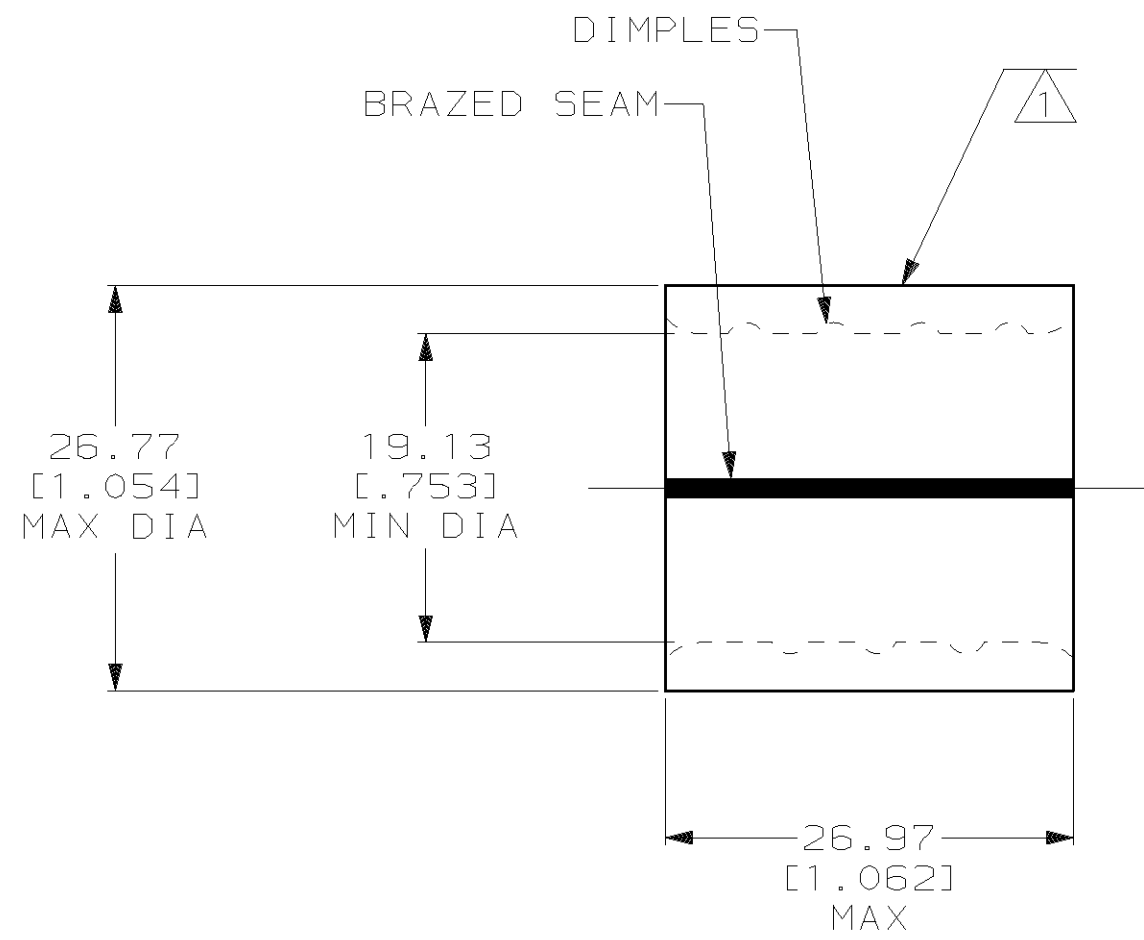


THIS DRAWING IS UNPUBLISHED. RELEASED FOR PUBLICATION, 19 .
 © COPYRIGHT 19 BY AMP INCORPORATED. ALL INTERNATIONAL RIGHTS RESERVED.

LOC	DIST	P	F	ZONE	LTR	DESCRIPTION	DATE	APPD
G	14				C	REV PER 063A-0435-02	30SEP02	MS



AMP WIRE RANGE	UL E13288 Listed
250 MCM STRANDED	250 MCM STRANDED
SA LR7189 Certified	MILITARY P/N AND CLASS
250 MCM STRANDED	NOT APPLICABLE

- 1 STAMP AMP W* 250-300 MCM
LOCATE APPROX AS SHOWN
- 2 MATERIAL THK: 3.20^{±0.10} [.126^{±.004}]
- 3 STAMP FOR MANUFACTURING LOCATION OR
CODE PERMISSIBLE.

**AMP INCORPORATED
CUSTOMER SERVICE SYSTEMS**

FOR ADDITIONAL
PRODUCT INFORMATION OR
COPIES OF DRAWINGS
AND TECHNICAL DOCUMENTS

PRODUCT INFORMATION CENTER
1-800-522-6752

FOR APPLICATION
TOOLING INFORMATION

TOOLING ASSISTANCE CENTER
1-800-722-1111

FOR ORDER ENTRY

1-800-526-5142

MAX RECOMMENDED OPERATING
TEMPERATURE:
170°C MAX

VOLTAGE RATING:
NOT APPLICABLE

CIRCULAR MIL AREA:
117.1-152.0mm² [231-300] MCM
STRANDED

THIS DRAWING IS A CONTROLLED DOCUMENT FOR
AMP INCORPORATED. IT IS SUBJECT TO CHANGE
AND THE CONTROLLING ENGINEERING ORGANIZATION
SHOULD BE CONTACTED FOR THE LATEST REVISION.

DO NOT SCALE PRINT.
UNLESS SPECIFIED
DIMENSIONS IN mm [INCHES]
TOLERANCES ON:
2 PLC DEC ± 0.20[.008]
3 PLC DEC ± -
ANGLES ± -

MATERIAL
COPPER PER ASTM B-152
ANNEALED

FINISH
TIN PLATE
0.00254[.000100] MIN
THK PER MIL-T-10727

DR 5/6/93
DK SCHRUM

CHK 5/14/93
AJ KAUFMAN

APPD 5/14/93
RE ROSER

APPD 5/14/93
CR RHOADS

PRODUCT SPEC
-

APPLICATION SPEC
-

WEIGHT -

AMP AMP Incorporated
Harrisburg, PA 17105-3608

NAME
SPLICE, PARALLEL, SOLISTRAND,
WIRE SIZE: 250-300 MCM

SIZE **B** CAGE CODE 00779 DRAWING NO **C-322275**

SCALE 2:1 SHEET 1 OF 1

322275
PART NO

Mouser Electronics

Authorized Distributor

Click to View Pricing, Inventory, Delivery & Lifecycle Information:

[TE Connectivity:](#)

[322275](#)