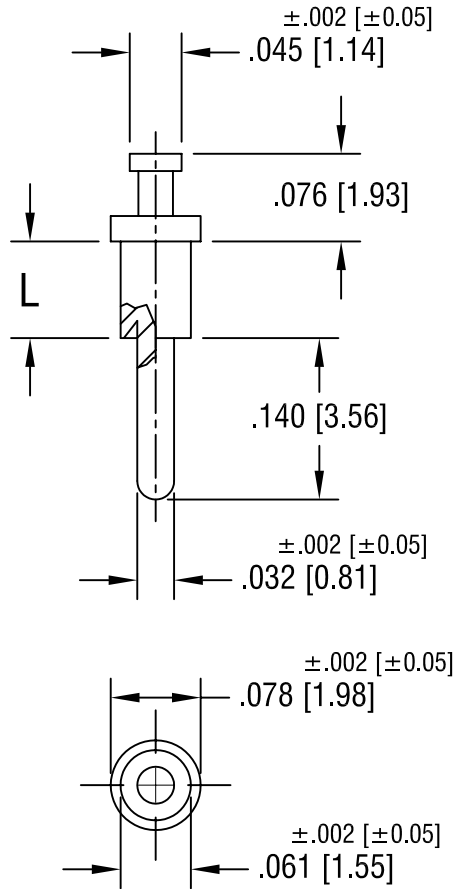


THIS DOCUMENT IS THE PROPERTY OF
KEYSTONE ELECTRONICS CORP. AND
SHALL NOT BE REPRODUCED, DISTRIBUTED
OR USED AS A BASIS FOR MANUFACTURE
WITHOUT PRIOR WRITTEN PERMISSION
FROM KEYSTONE ELECTRONICS CORP.



PART NO.	'L' DIM.
1633-1	.054 [1.37]
1633-2	.084 [2.13]
1633-3	.115 [2.92]
1633-4	.147 [3.73]

			KEYSTONE ELECTRONICS CORP.		
			ASTORIA, N.Y. 11105-2017		
PART NAME			TERMINAL		
MATERIAL			BRASS		
FINISH			TIN PLATE		
			DRN BY	BOONE	DATE
			APPD	LN	SCALE
			TOLERANCES	INCH	[MM]
			DECIMAL	$\pm .005$	[± 0.15]
			ANGULAR	$\pm 1^\circ$	
			UNLESS OTHERWISE SPECIFIED		
			CODE	DWG NO.	
			C/M	1633-	
1.24.00	CHANGE AS PER ECN 00-008	B			
8.23.93	REVISED	A			
DATE	DESCRIPTION	REV.			

Mouser Electronics

Authorized Distributor

Click to View Pricing, Inventory, Delivery & Lifecycle Information:

[Keystone Electronics:](#)

[1633-4](#)