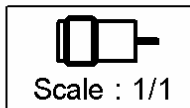
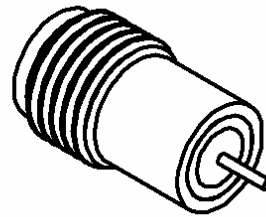
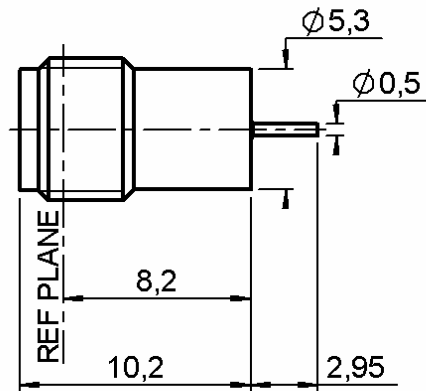


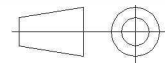
**SOLDER JACK RECEPTACLE**  
**HERMETIC-WITH CYLINDRICAL CONTACT**

**R125.630.000**

Series : SMA



All dimensions are in mm.



COMPONENTS	MATERIALS	PLATINGS (μm)
BODY	FERRO-NICKEL	GOLD 0.5 OVER NICKEL 2
CENTER CONTACT	SILVER P	GOLD 0.5 OVER NICKEL 2
OUTER CONTACT	-	-
INSULATOR	PTFE	-
GASKET	-	-
OTHERS PARTS	-	-
-	-	-
-	-	-

Issue : 1220 E

In the effort to improve our products, we reserve the right to make changes judged to be necessary.



**SOLDER JACK RECEPTACLE**  
**HERMETIC-WITH CYLINDRICAL CONTACT**

**R125.630.000**

Series : SMA

**PACKAGING**

Standard	Unit	Other
<b>1</b>	<b>-</b>	<b>Contact us</b>

**SPECIFICATION****ELECTRICAL CHARACTERISTICS**

Impedance	<b>50</b>	$\Omega$
Frequency	<b>0-18</b>	GHz
VSWR	<b>1.10 + 0,0100</b>	x F(GHz) Maxi
Insertion loss	<b>0.3*</b>	$\sqrt{F}(\text{GHz})$ dB Maxi
RF leakage	<b>NA</b>	- F(GHz)) dB Maxi
Voltage rating	<b>500</b>	Veff Maxi
Dielectric withstanding voltage	<b>1000</b>	Veff mini
Insulation resistance	<b>5000</b>	M $\Omega$ mini

**ENVIRONMENTAL**

Operating temperature	<b>-40/+100</b>	$^{\circ}\text{C}$
Hermetic seal	<b>10-5</b>	Atm.cm <sup>3</sup> /s
Panel leakage	<b>NA</b>	

**OTHERS CHARACTERISTICS**

Assembly instruction

Others :

\* Coaxial Transmission Line Only

**MECHANICAL CHARACTERISTICS**

Center contact retention	
Axial force – Mating end	<b>27</b> N mini
Axial force – Opposite end	<b>27</b> N mini
Torque	<b>NA</b> N.cm mini
Recommended torque	
Mating	<b>NA</b> N.cm
Panel nut	<b>NA</b> N.cm
Mating life	<b>500</b> Cycles mini
Weight	<b>1,2000</b> g

Issue : 1220 E

In the effort to improve our products, we reserve the right to make changes judged to be necessary.



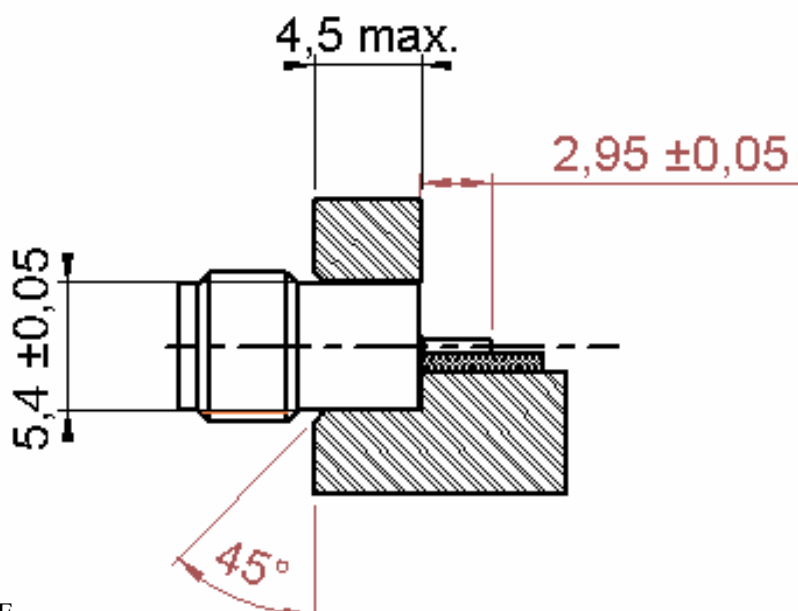
**SOLDER JACK RECEPTACLE**  
**HERMETIC-WITH CYLINDRICAL CONTACT**

**R125.630.000**

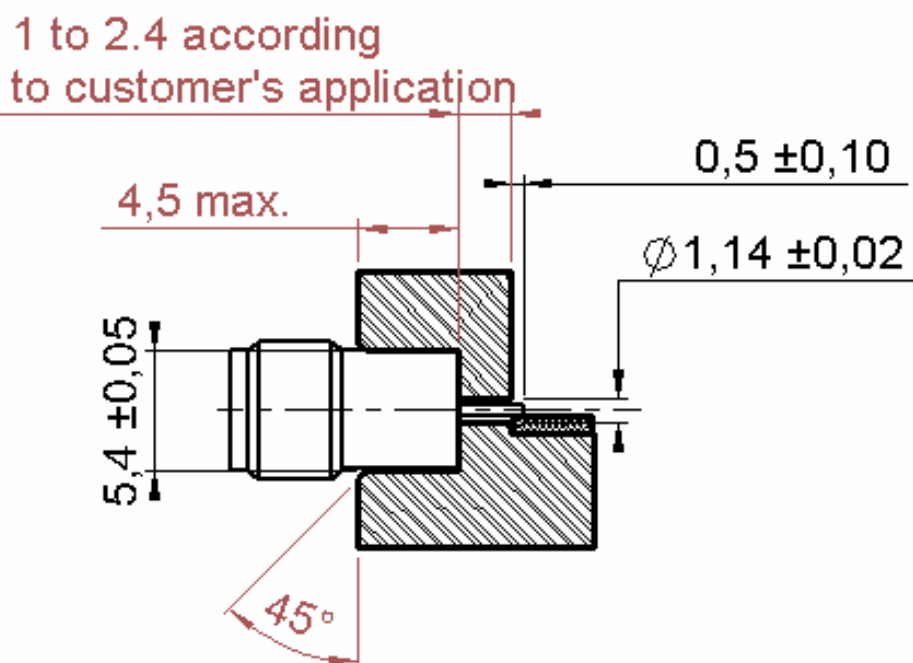
Series : SMA

**RECOMMENDED MOUNTING HOLE DETAIL****PANEL WITH THROUGH HOLE**

Frequency range 0 – 18 GHz  
VSWR < 1.10 + 0.03 F

**PANEL WITH BLIND HOLE**

Frequency range 0 – 18 GHz  
VSWR < 1.05 + 0.02 F

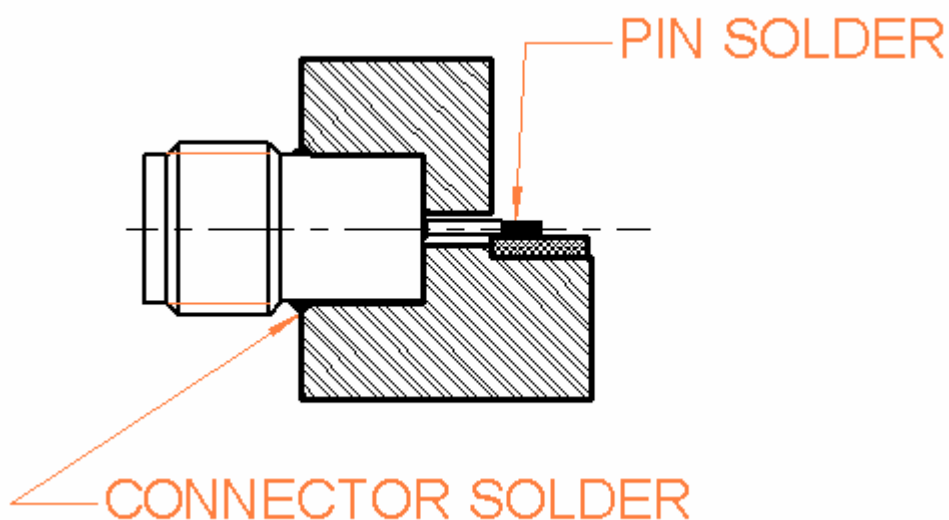
**Issue : 1220 E**

In the effort to improve our products, we reserve the right to make changes judged to be necessary.

**SOLDER JACK RECEPTACLE**  
**HERMETIC-WITH CYLINDRICAL CONTACT**

**R125.630.000**

Series : SMA

**MOUNTING INSTRUCTIONS**

- 1 – Degrease and clean connector and box.
- 2 – Solder the connector on the panel:  
Preheating at about 100°C.  
Take care not to exceed 250°C during solder operation .
- 3 – Solder the pin on the track:  
-ceramic substrates: preheating at about 100°C.  
-other substrates: no preheating required.

NOTE: Please use a small soldering iron ,or hot air soldering system.

**Issue : 1220 E**

In the effort to improve our products, we reserve the right to make changes judged to be necessary.



# Mouser Electronics

Authorized Distributor

Click to View Pricing, Inventory, Delivery & Lifecycle Information:

Radial:

[R125630000](#)