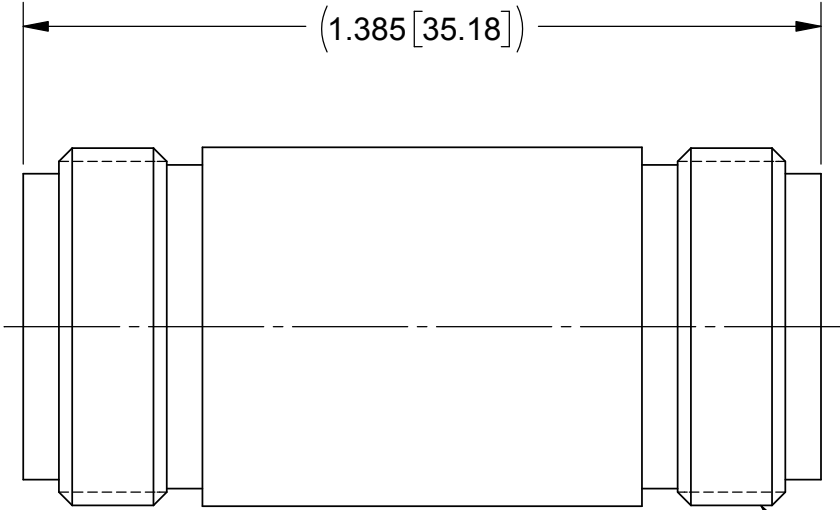


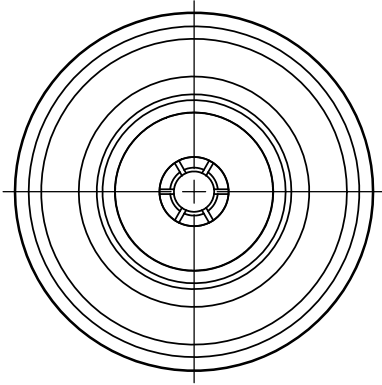
ROHS COMPLIANT

PRODUCT DATA DRAWING

| REVISION HISTORY | | | |
|------------------|----------------|----------|----------|
| REV | DESCRIPTION | DATE | APPROVED |
| - | REL. DCN 42905 | 12/06/16 | STW |
| | | | |
| | | | |



2X 5/8-24 UNEF-2A



MATERIAL:

BODY: BRASS PER ASTM B16 ALLOY No. UNS C36000.

CONTACT: BERYLLIUM COPPER PER ASTM B196,
ALLOY No. UNS C17300, TD04

INSULATOR: PTFE PER ASTM D1710, TYPE I, GRADE 1, CLASS B

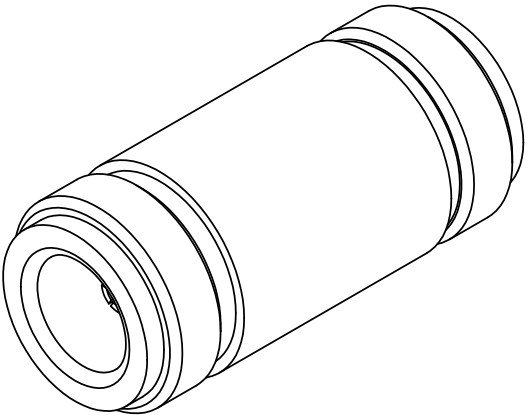
FINISH:


BODY: SILVER PER ASTM B700, GRADE D, CLASS S.

CONTACT: GOLD PER ASTM B488, TYPE II, CODE C, CLASS 1.27,
OVER NICKEL PER AMS-QQ-N-290, CLASS 1, .000050" MIN.

PERFORMANCE:

IMPEDANCE: 50 OHMS
FREQ. RANGE: DC TO 11.0 GHz



| | | | | | | |
|---|---|--|---|---|--|--------------|
| MATERIAL: | SEE NOTES | DIMENSIONS ARE IN INCHES TOLERANCES: FRACTIONAL: $\pm 1/64$ ANGULAR: $X^{\circ} \pm 1'0''$ $X^{\circ}X' \pm 15''$ DECIMAL: $.X \pm .030$ $.XX \pm .010$ $.XXX \pm .005$ INTERPRET DIMENSIONS AND TOLERANCES PER ASME Y14.5M - 1994 | UNLESS OTHERWISE SPECIFIED 1) ALL DIMENSIONS ARE IN INCHES (MILLIMETERS) 2) ALL DIMENSIONS ARE AFTER PLATING. 3) BREAK CORNERS & EDGES .005 R. MAX. 4) CHAM. 1ST & LAST THREADS. 5) SURFACE ROUGHNESS 63-MIL-STD-10. 6) DIA.'S ON COMMON CENTERS TO BE CONCENTRIC WITHIN .005 T.I.R. 7) REMOVE ALL BURRS | SV Microwave, Inc. 2400 Centrepark West Drive, Suite 100 West Palm Beach, FL 33409 | | |
| FINISH: | SEE NOTES | | | TITLE: | | |
| SURFACE AREA: | N/A | | | ADAPTER N JACK TO JACK | | |
| PROPRIETARY THE INFORMATION CONTAINED IN THIS DRAWING IS THE SOLE PROPERTY OF SV MICROWAVE, INC. ANY REPRODUCTION IN PART OR AS A WHOLE WITHOUT THE WRITTEN PERMISSION OF SV MICROWAVE, INC IS PROHIBITED. | THIRD ANGLE PROJECTION  | | | DRAWN: JMC 12/06/16 CHECKED: STW 12/06/16 APPROVED: STW 12/06/16 | SIZE B CAGE CODE 95077 DWG. NO. M55339/07-00029 SCALE: 2:1 | SHEET 1 OF 1 |

Mouser Electronics

Authorized Distributor

Click to View Pricing, Inventory, Delivery & Lifecycle Information:

[Amphenol:](#)

[M55339/07-00029](#)