

# FLEXIBLE .025" SQ BOARD STACKERS

**Mates with:**SSW, SSQ, ESW, ESQ,  
CES, SLW, BSW, BCS,  
SSM, HLE, PHF**Cable Mates:**

IDSS, IDSD

**SPECIFICATIONS**

For complete specifications see [www.samtec.com?DW](http://www.samtec.com?DW),  
[www.samtec.com?EW](http://www.samtec.com?EW),  
[www.samtec.com?ZW](http://www.samtec.com?ZW) or  
[www.samtec.com?HW-TH](http://www.samtec.com?HW-TH)

**Insulator Material:**DW, EW, ZW: Black Glass  
Filled PolyesterHW: Natural Liquid  
Crystal Polymer**Terminal Material:**

Phosphor Bronze

**Plating:**

Au or Sn over

50  $\mu$ " (1.27  $\mu$ m) Ni**Operating Temp Range:**

-55 °C to +125 °C with Gold

-55 °C to +105 °C with Tin

**RoHS Compliant:**

Yes

**Lead-Free Solderable:**

DW, EW, ZW:

No, Lead Wave Only

HW: Yes

**RECOGNITIONS**

For complete scope of  
recognitions see  
[www.samtec.com/quality](http://www.samtec.com/quality)

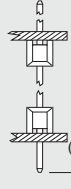
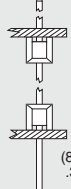
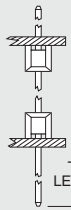
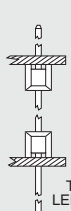
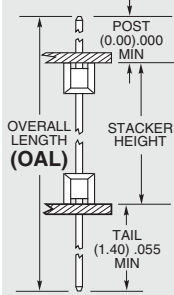

**ALSO AVAILABLE**  
(MOQ Required)

- Other platings

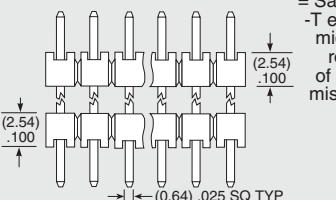
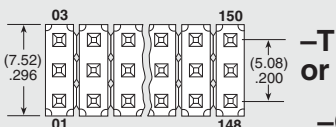
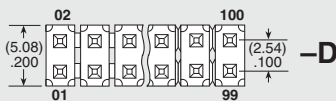
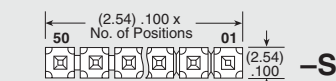
**Notes:**

For added mechanical stability,  
Samtec recommends  
mechanical board spacers be  
used in applications with gold or  
selective gold plated connectors.  
Contact [ipg@samtec.com](mailto:ipg@samtec.com) for  
more information.

This Series is non-standard,  
non-returnable.

**TYPE  
STRIP****NO. PINS  
PER ROW****LEAD  
STYLE****PLATING  
OPTION****ROW  
OPTION****STACKER  
HEIGHT****OTHER  
OPTIONS**
**DW**  
= (2.79 mm)  
.110" Tail

**EW**  
= (8.38 mm)  
.330" Tail

**ZW**  
= Custom Tail

**HW**  
= High Temp  
Custom Tail

**Specify LEAD STYLE  
from chart**


LEAD STYLE	OAL
-07	(10.92) .430
-08	(13.46) .530
-09	(18.54) .730
-10	(21.08) .830
-11	(23.62) .930
-12	(26.16) 1.030
-13	(31.24) 1.230
-14	(36.32) 1.430
-15	(16.00) .630
-16	(11.30) .445
-17	(12.19) .480
-19	(33.78) 1.330
-20	(28.70) 1.130

**01 thru 50**


-Q\*  
= Same as  
-T except  
middle  
row of pins  
missing.

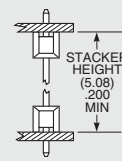
**-S**  
= Single  
Row

**-D**  
= Double  
Row

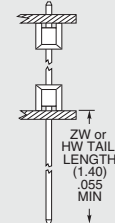
**-T**  
= Triple  
Row

**-Q**  
= Double  
Row .200"  
(5.08 mm)  
row space

**-“XXX”**  
= Stacker  
Height  
(in inches)  
(5.08 mm)  
.200"  
minimum  
Example:  
-250  
= (6.35 mm)  
.250"



**-“XXX”**  
= ZW or HW  
Tail Length  
(in inches)  
(1.40 mm)  
.055"  
minimum  
Example:  
-250  
= (6.35 mm)  
.250"



**-F**  
= Gold flash on contact,  
Matte Tin on tail

**-L**  
= 10  $\mu$ " (0.25  $\mu$ m)  
Gold on contact area  
of longer tail,  
Matte Tin on tail

**-G**  
= 10  $\mu$ " (0.25  $\mu$ m)  
Gold on contact area  
of longer tail,  
Gold flash on balance

**-T**  
= Matte Tin

**-LL**  
= Locking  
Lead  
(Shortest  
dimension  
between the  
tail and the  
post is the  
end that will  
be crimped.  
Available  
on tails from  
(2.29 mm)  
.090" to  
(7.87 mm)  
.310" only.)  
Single row, 01  
& 02 positions  
& -Q row not  
available

**-“XXX”**  
= Polarized  
Specify omitted  
pin position

Due to technical progress, all designs, specifications and components are subject to change without notice.

[WWW.SAMTEC.COM](http://WWW.SAMTEC.COM)

All parts within this catalog are built to Samtec's specifications.

Customer specific requirements must be approved by Samtec and identified in a Samtec customer-specific drawing to apply.

# Mouser Electronics

Authorized Distributor

Click to View Pricing, Inventory, Delivery & Lifecycle Information:

[Samtec:](#)

[ZW-14-10-G-D-400-093](#)