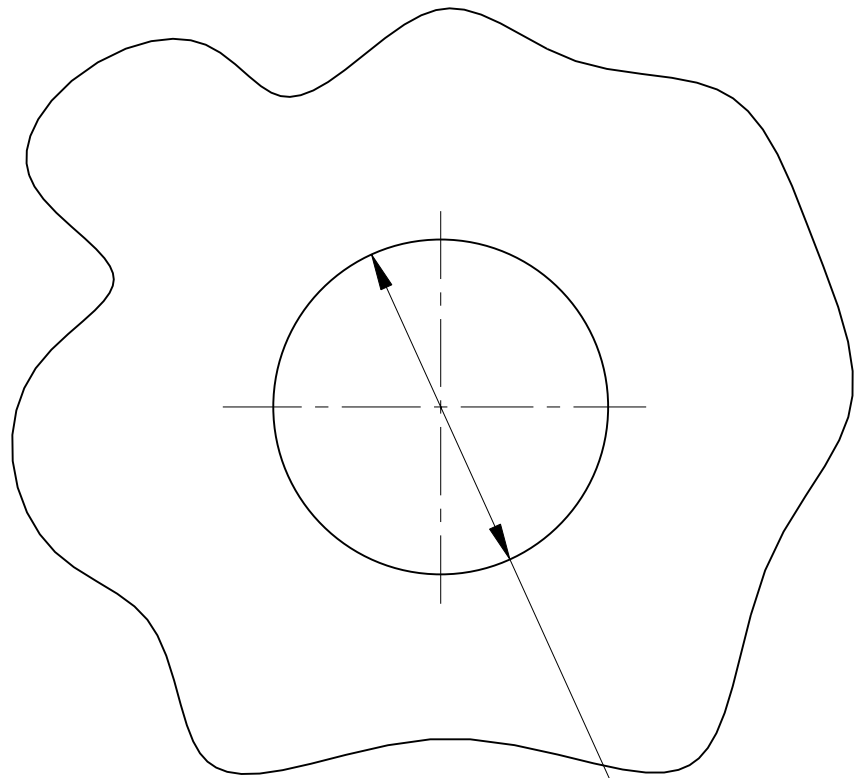
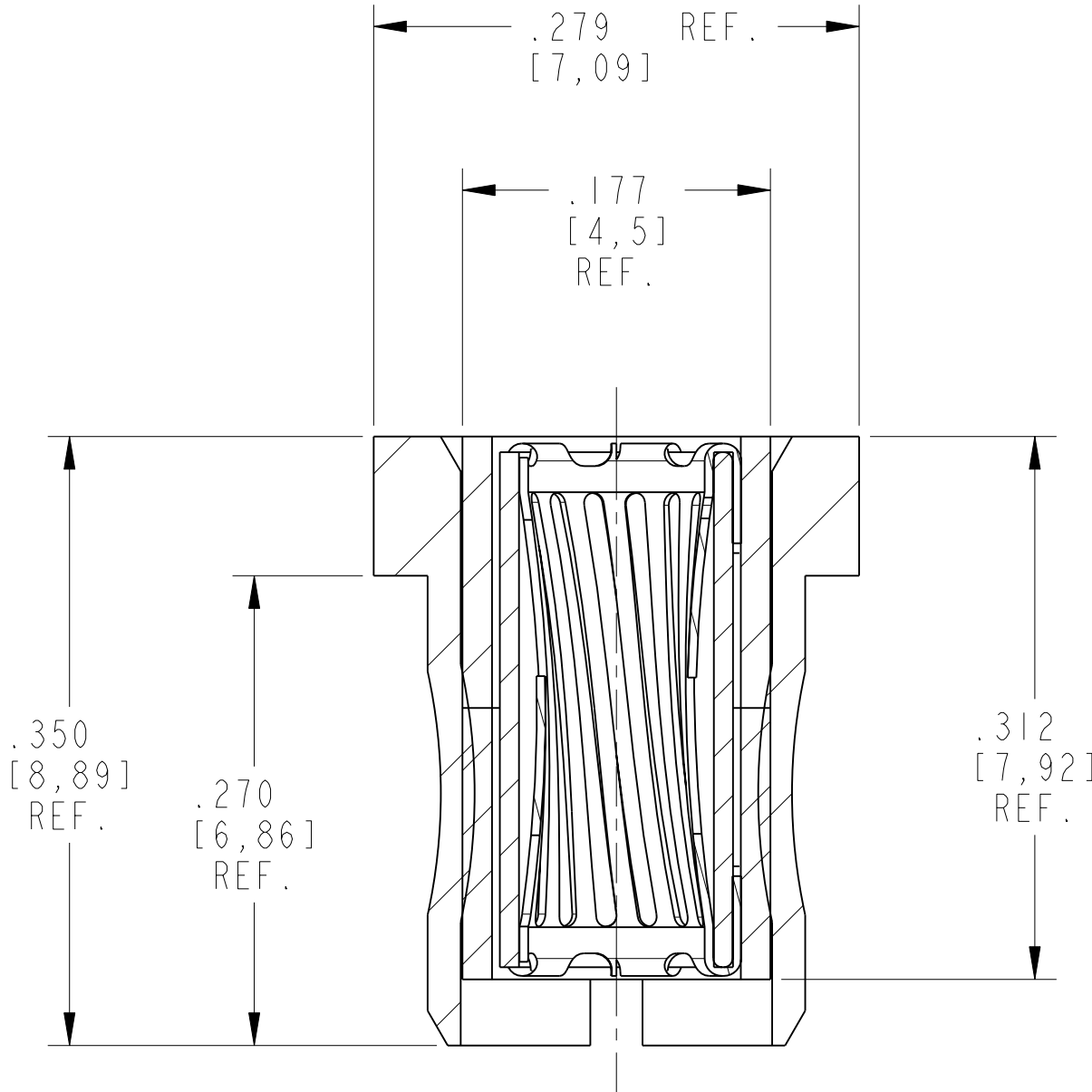
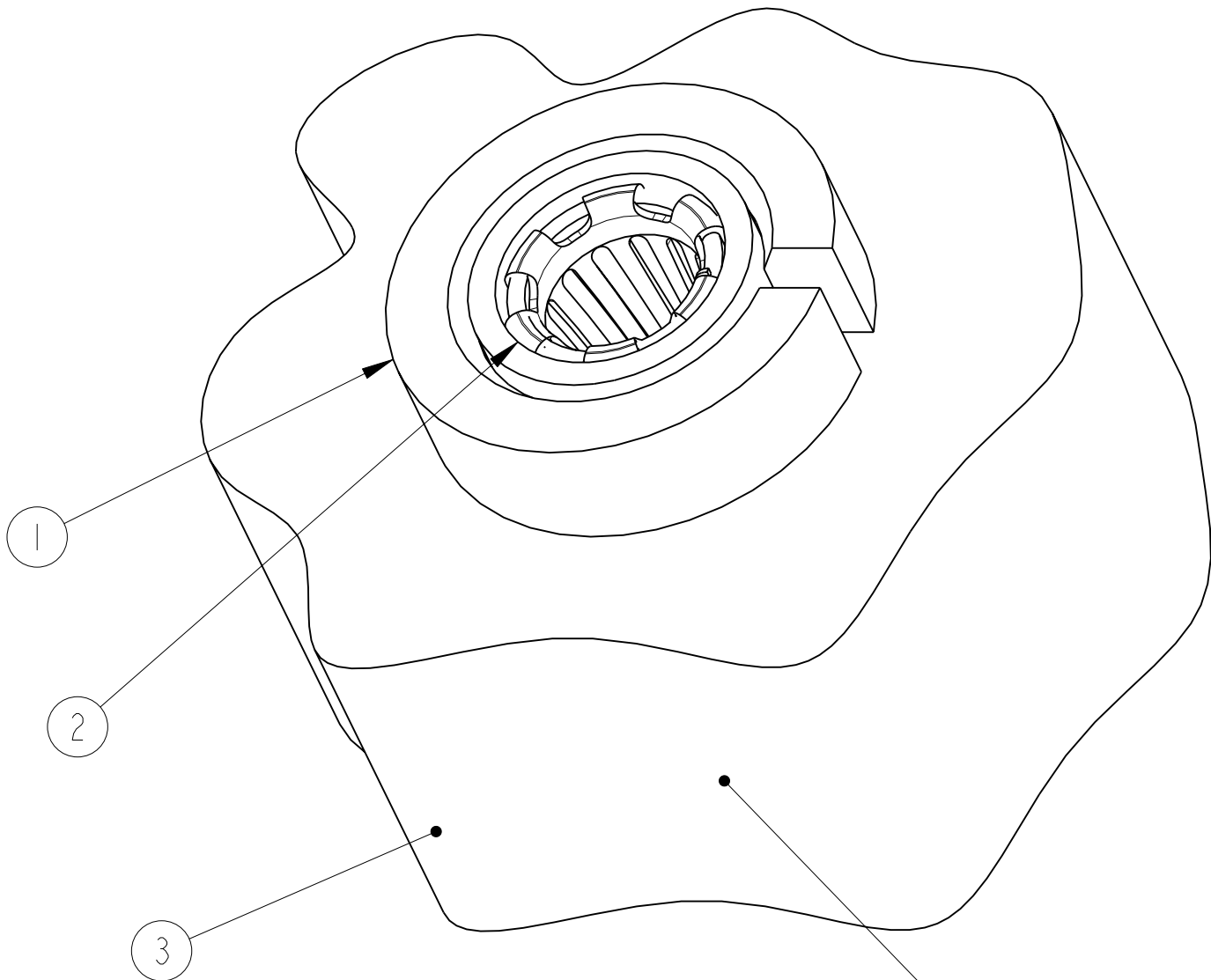


REV. A	SHEET 1 OF 2	DOCUMENT NO. 10-639772-001
REVISIONS		
LTR	DESCRIPTION	DATE
A	INITIAL RELEASE	



Ø .2180 ± .0030
[5,537 ± 0,076]
PTH

RECOMMENDED PCB THICKNESS: .250 ± .025



SECTION A-A

PRINTED CIRCUIT BOARD SHOWN FOR REFERENCE ONLY.

3. RADSOK SHOWN MATES WITH AS SIZE 12 PIN.
RECOMMENDED PIN CONFIGURATION: Ø.094 ± .001 WITH A SPHERICAL RADIUS.
2. RADSOK CARTRIDGE, ITEM 2, IS PRESSED TO FINAL POSITION IN BUSHING, ITEM 1, TO DIMENSION SHOWN. CARE IS TO BE TAKEN TO ENSURE CARTRIDGE IS PRESSED PERPENDICULAR TO BOARD.
1. RADSOK BUSHING, ITEM 1, IS INSTALLED INTO PCB, ITEM 3 AS SHOWN.
ITEMS 1 AND 2 ARE SUPPLIED PRE-INSTALLED BUT THE RADSOK MUST BE PRESSED TO FINAL POSITION (SEE NOTE 2).

NOTES:

THE USE OF THIS DOCUMENT IS UNLIMITED.
HOWEVER, DOCUMENTS REFERENCED HEREON
MAY CONTAIN LIMITED RIGHTS DATA.

RELEASED / Jun . 28 2007, 09:10 AM

DOCUMENT NO.
10-639772-001

SHEET 1 OF 2

REV.
A

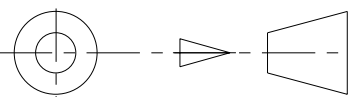
N/A

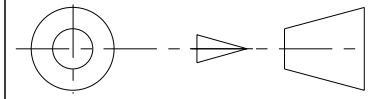
NEXT ASSEMBLY

PRO/ENGINEER INFORMATION
Pro/e Model Used:
10-639772.ASSEM
Drawing Name:
10-639772

UNLESS OTHERWISE SPECIFIED
SPECIFICATIONS
LINEAR DIMENSIONS ARE IN INCHES
TOLERANCES:
.XXXX = ±.0005 ANGLES= ±2°
.XXX = ±.010
.XX = ±.03
.X = ±.1
DIM.& TOL. PER ASME Y14.5M;
DRM PER MIL-DTL-31000;
OTHER Amphenol Sds. PER 9-3800
LEGENDS:
= FLAG NOTE CALL OUT
REFERENCE ONLY

MATERIAL SPEC.
N/A
PROCESS SPEC.
N/A

3	--	N/A	PRINTED CIRCUIT BOARD	
2	I	10-639678-001	RADSOK CARTRIDGE (HO)	
1	I	10-639726-001	2.4MM RADSSERT BUSHING	
POS	QTY	PART NUMBER	DESCRIPTION	NOTE
PARTS LIST				
APPROVALS		DATE	AMPHENOL CORPORATION	
PREPARED BY M. UPPLER		06-0c1-06	40-60 DELAWARE AVENUE SIDNEY, N.Y. 13838	
ENGINEER IN CHARGE R. BARNES			2.4MM RADSOK/RADSSERT KIT	
DESIGN MANAGER N/A			PCB MOUNTED PRESS-FIT, SILVER	
DESIGN ACTIVITY GROUP C&I			MATES WITH SIZE 12 PIN	
THIRD ANGLE PROJECTION			SIZE C	CAGE CODE 77820
			DOCUMENT NO. 10-639772-001	REV. A
SCALE: 10.0			REF.	SHEET 1 OF 2



DOCUMENT NO.
10-639772-001

REV. A
SHEET 1 OF 2

RELEASE STATE
Released
REVISION
A
VERSION
2

D

C

B

A

4

3

2

DOCUMENT NO.
10-639772-001

SHEET 1 OF 2

REV.
A

C

B

A

FORMAT: C-U-E-1

4

3

2

1

4. RADSOK CARTRIDGE IS PRESSED INTO BUSHING TO DIMENSION SHOWN. CARE TO BE TAKEN TO ENSURE CARTRIDGE IS INSTALLED PARALLEL TO BORE IN BUSHING.

NOTES:

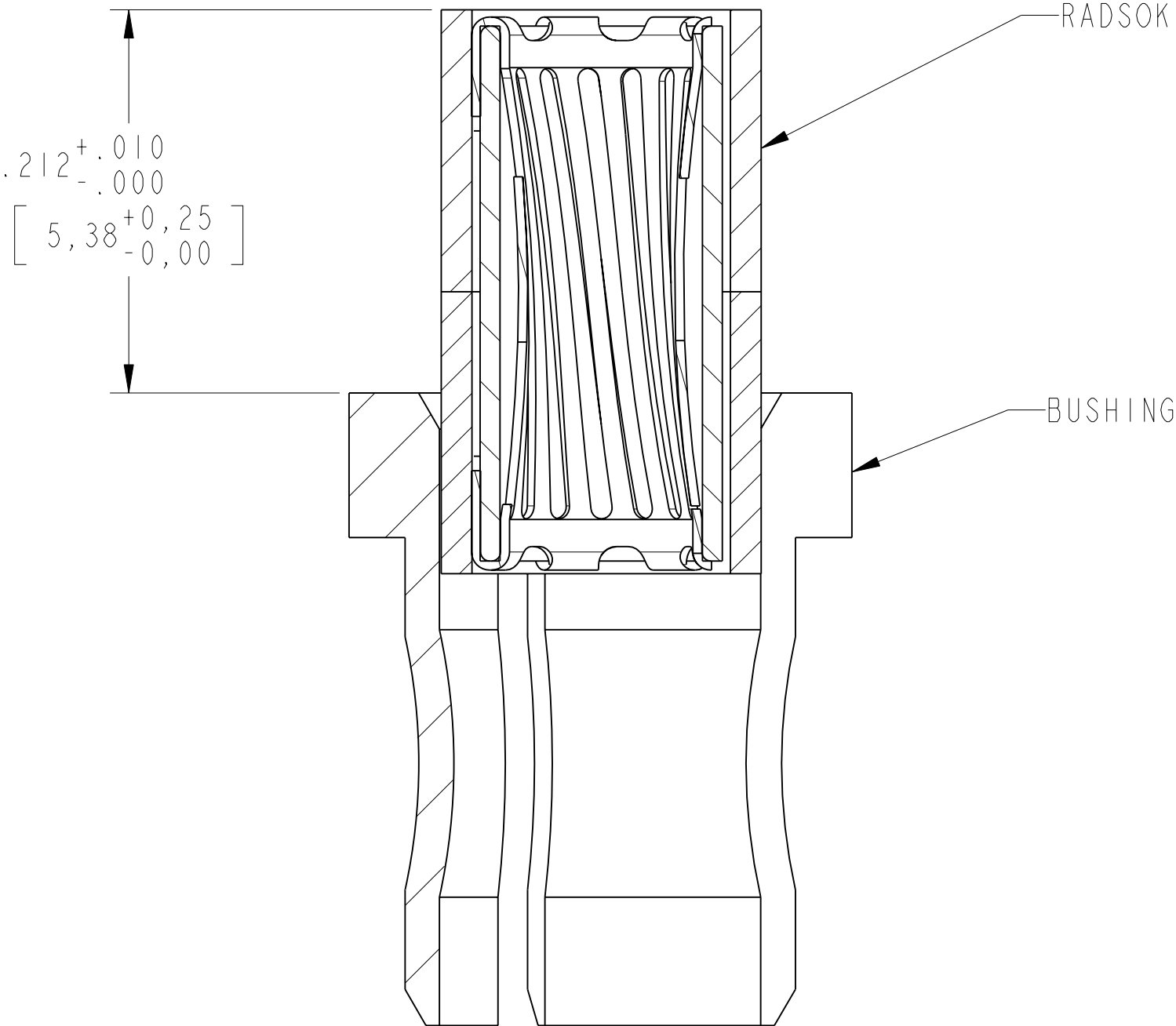
THE USE OF THIS DOCUMENT IS UNLIMITED. HOWEVER, DOCUMENTS REFERENCED HEREON MAY CONTAIN LIMITED RIGHTS DATA.

RELEASED / Jun . 28 2007, 09:10 AM

10-639772-001

SHEET 2 OF 2

REV. A



PRE-INSTALL POSITION OF RADSOK

Mouser Electronics

Authorized Distributor

Click to View Pricing, Inventory, Delivery & Lifecycle Information:

[Amphenol:](#)

[C10-639772-001](#)