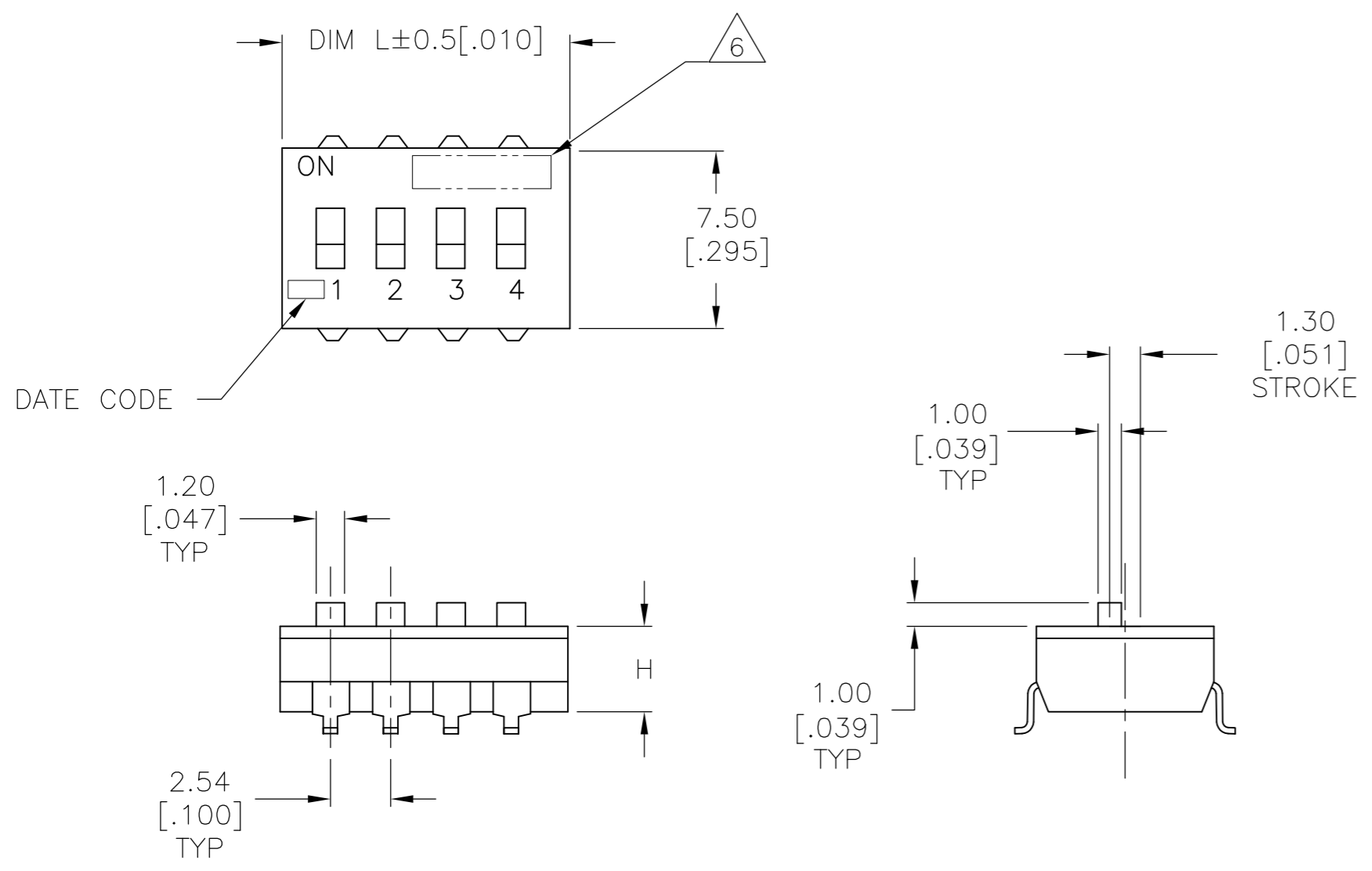


D

C

B

A



SPECIFICATIONS:

MATERIAL
BASE, PPS, UL94V-0, BLACK
COVER, PPS, UL94V-0, BLACK
ACTUATOR, PA6T, UL94V-0, WHITE
FIXED CONTACT/TERMINAL, CU ALLOY-GOLD FLASH OVER NICKEL
MOVING CONTACT, CU ALLOY, PLATE-GOLD FLASH/NICKEL


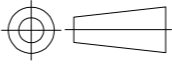
ELECTRICAL
MAX CONTACT RATING SWITCHING, 100MILLIAMP @ 24 VDC
MIN CONTACT RATING SWITCHING, .1MICROAMP @ 1 MILLIVOLT
MAX CONTACT NON-SWITCHING, 1AMP @ 5 VDC
INITIAL CONTACT RESISTANCE, 50 MILLIOHMS MAX.
CONTACT RESISTANCE (AFTER ENVIRONMENTAL TEST), 100 MILLIOHMS
CONTACT RESISTANCE (AFTER GAS TEST), 300 MILLIOHMS
INSULATION RESISTANCE, 1,000 MEGOHMS MIN. @ 100 VDC
DIELECTRIC STRENGTH, 500 VAC RMS @ SEA LEVEL
LIFE EXPECTANCY, 1,000 CYCLES

MECHANICAL
OPERATING FORCE, LESS THAN 800 GRAMS
CONTACT PRESSURE, 280,000 PSI

ENVIRONMENTAL
OPERATING TEMPERATURE, -30 TO +85 DEGREES C
STORAGE TEMPERATURE, -45 TO +105 DEGREES C
CLEANING, AQUEOUS OR SOLVENT
SOLDER HEAT RESISTANCE, PER 109-201,COND B, SWITCH "OFF".
SOLDERABILITY PER JIS C 0050 & JIS C 0053

- 1 SWITCHES TO BE RECEIVED IN THE "OFF" POSITION AND PACKAGED IN CLEAR TUBES TO ACCOMMODATE AUTO-INSERTION.
- 2 TOP SURFACE TO BE CLEARLY MARKED AS SHOWN.
- 3 SWITCHES TO BE BLACK WITH WHITE ACTUATORS AND MARKINGS.
- 4 TERMINAL OPTION: OLD T&B P/N ADExxS, SA OR SB
S= OUTSIDE "L" TERMINALS; SA= INSIDE "L" TERMINALS;
SB= BUTT TERMINALS.
- 5 ALL MATERIALS AND FINISHES SHALL COMPLY WITH EU DIRECTIVE 2002/95/EC OF 27JAN2003 (ROHS).
- 6 OBSOLETE PARTS: OBSOLETE CIS STREAMLINING PER D.RENAUD/D.SINISI.
- 7 TAPE AND REEL PACKING PER PAGE 3 SPECIFICATIONS.

SEE SHEET 2 FOR PART NUMBER TABLE
AND MOUNTING OPTIONS

THIS DRAWING IS A CONTROLLED DOCUMENT.		DWN B.S.VISWESWARA	10FEB05	 TE Connectivity	
DIMENSIONS: mm [INCHES]		CHK M.SARVER	-		
		APVD M.SARVER	-	NAME DIP SWITCH, ADE-SMT SERIES	
		PRODUCT SPEC	-		
		APPLICATION SPEC	-		
MATERIAL -		WEIGHT	-	SIZE A2	CAGE CODE -
FINISH -		CUSTOMER DRAWING	-	DRAWING NO C=1825058	RESTRICTED TO -
		SCALE 4:1	SHEET 1 OF 3	REV S4	

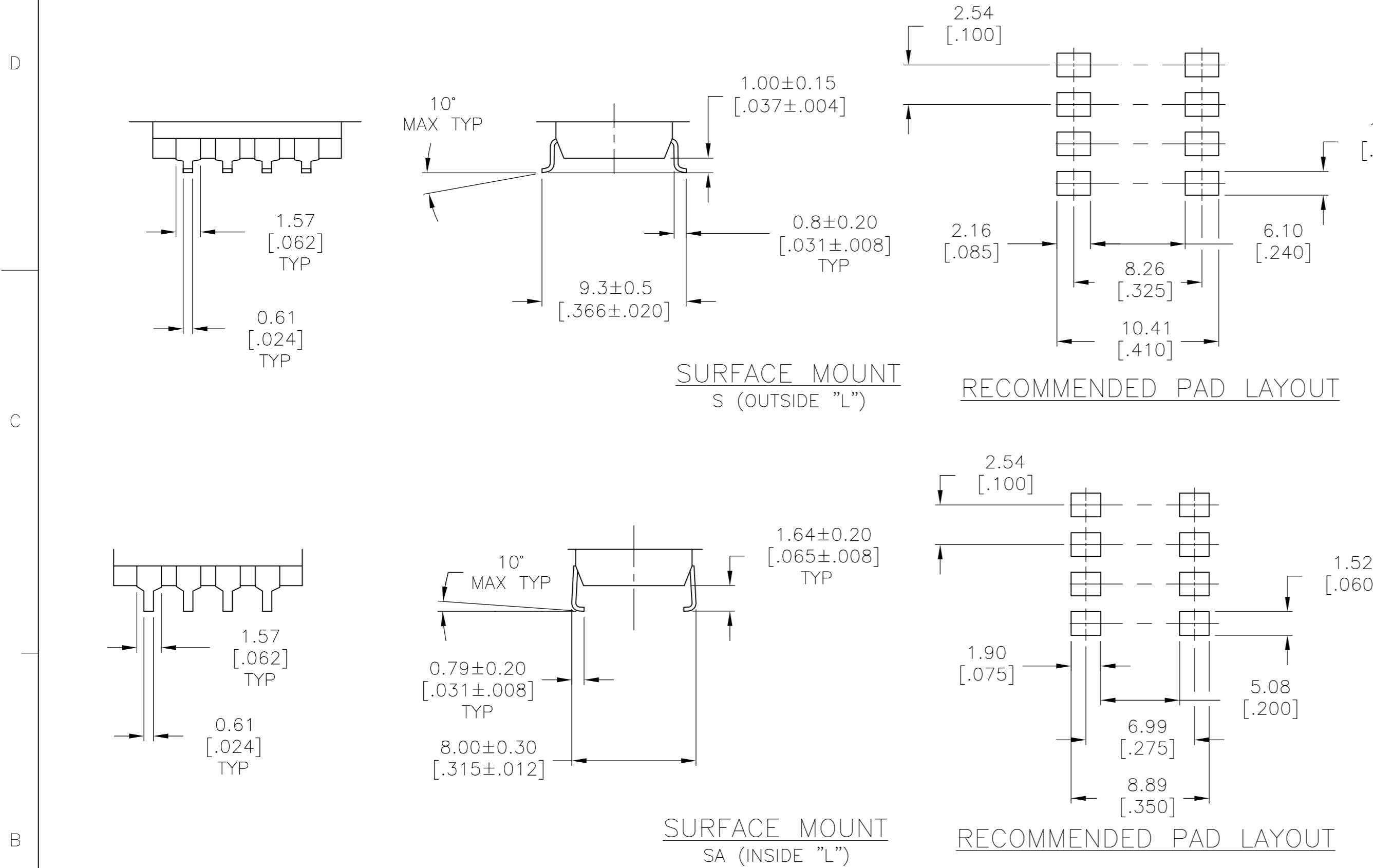
REVISIONS					
P	LTR	DESCRIPTION	DATE	DWN	APVD
	-	SEE SHEET 1	-	-	-

D

C

B

A




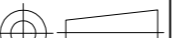
D

C

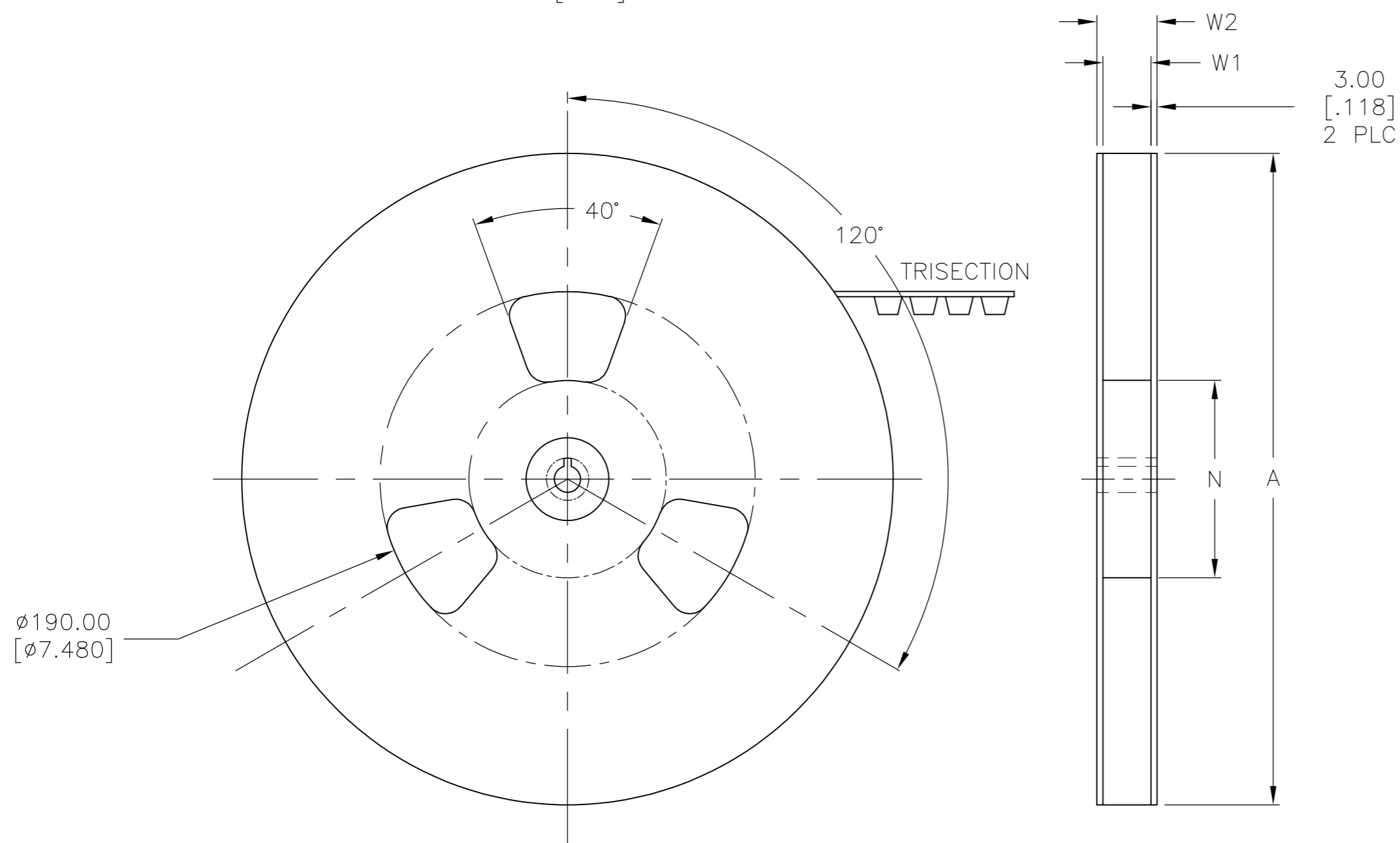
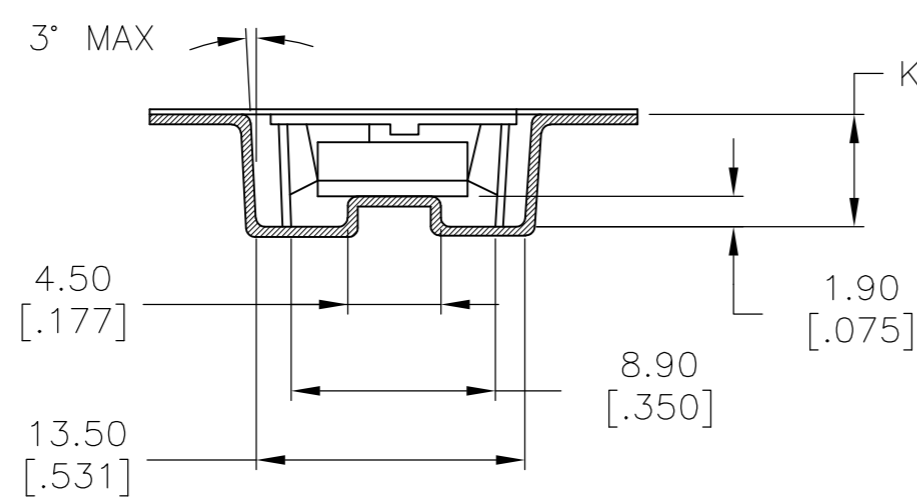
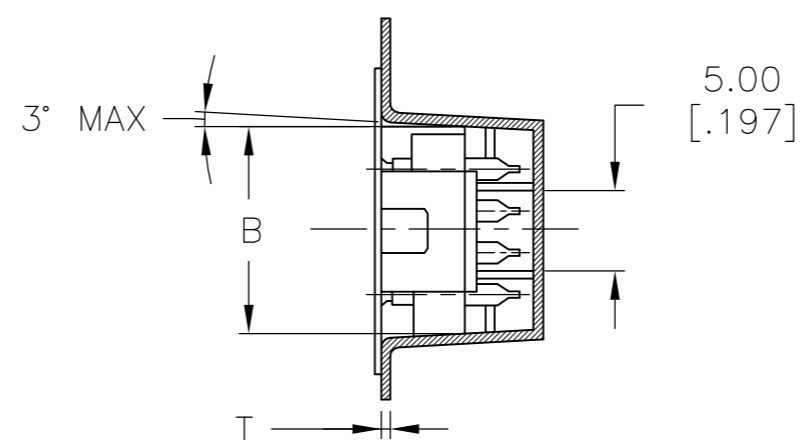
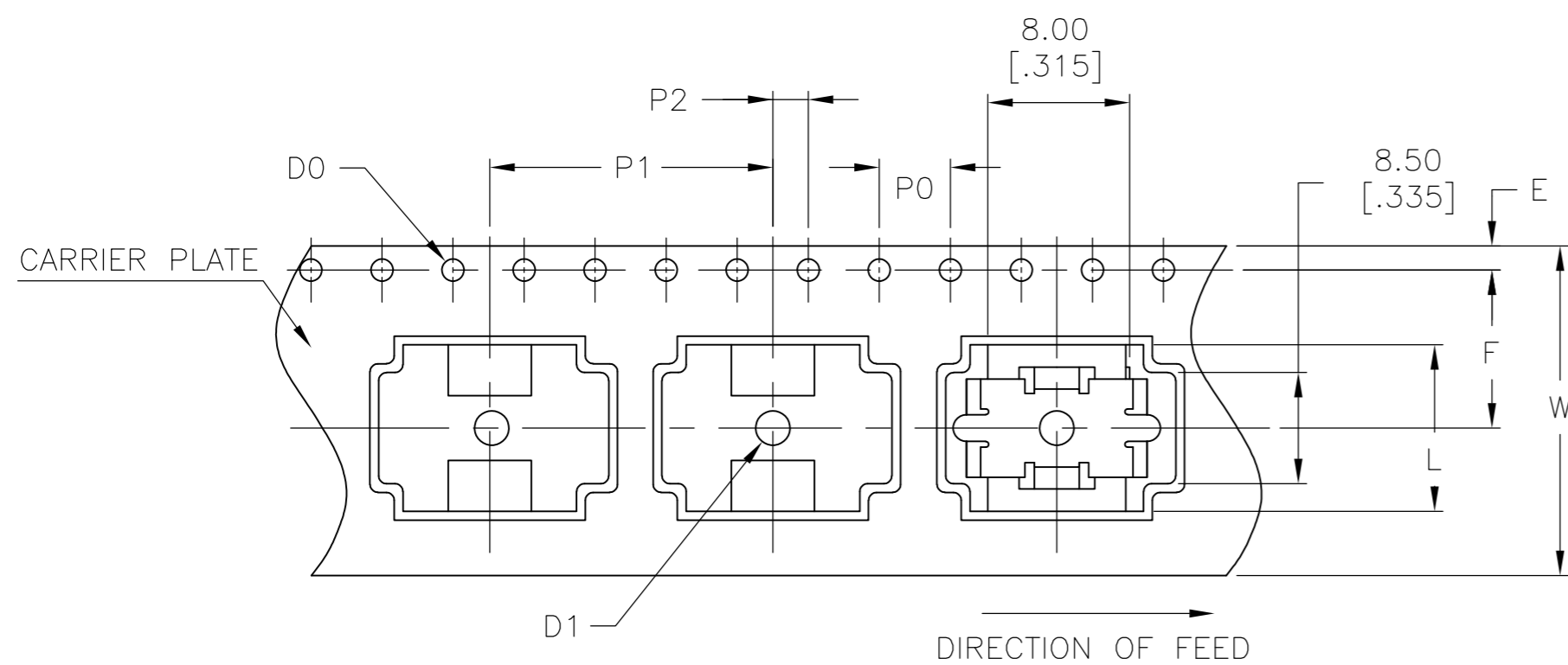
B

A

OBSOLETE	ADE12STR04	3.61	[.142]	32.51	[1.280]	12	4-1825058-1
	ADE10STR04	3.50	[.138]	27.30	[1.075]	10	4-1825058-0
	ADE09STR04	3.50	[.138]	24.54	[.978]	9	3-1825058-9
	ADE08STR04	3.50	[.138]	22.30	[.878]	8	3-1825058-8
OBSOLETE	ADE07STR04	3.50	[.138]	19.76	[.778]	7	3-1825058-7
	ADE06STR04	3.50	[.138]	17.22	[.678]	6	3-1825058-6
OBSOLETE	ADE05STR04	3.50	[.138]	14.68	[.578]	5	3-1825058-5
OBSOLETE	ADE04STR04	3.50	[.138]	12.14	[.478]	4	3-1825058-4
OBSOLETE	ADE03STR04	3.50	[.138]	9.60	[.378]	3	3-1825058-3
	ADE02STR04	3.50	[.138]	7.00	[.276]	2	3-1825058-2
7	ADE04SATR04	3.50	[.138]	12.14	[.478]	4	3-1825058-1
OBSOLETE	ADE12SB04	3.61	[.142]	32.51	[1.280]	12	3-1825058-0
OBSOLETE	ADE12SA04	3.61	[.142]	32.51	[1.280]	12	2-1825058-9
OBSOLETE	ADE12S04	3.61	[.142]	32.51	[1.280]	12	2-1825058-8
OBSOLETE	ADE10SB04	3.50	[.138]	27.30	[1.075]	10	2-1825058-7
OBSOLETE	ADE10SA04	3.50	[.138]	27.30	[1.075]	10	2-1825058-6
	ADE10S04	3.50	[.138]	27.30	[1.075]	10	2-1825058-5
	ADE09SB04	3.50	[.138]	24.54	[.978]	9	2-1825058-4
	ADE09SA04	3.50	[.138]	24.54	[.978]	9	2-1825058-3
	ADE09S04	3.50	[.138]	24.54	[.978]	9	2-1825058-2
OBSOLETE	ADE08SB04	3.50	[.138]	22.30	[.878]	8	2-1825058-1
	ADE08SA04	3.50	[.138]	22.30	[.878]	8	2-1825058-0
	ADE08S04	3.50	[.138]	22.30	[.878]	8	1-1825058-9
OBSOLETE	ADE07SB04	3.50	[.138]	19.76	[.778]	7	1-1825058-8
6	ADE07SA04	3.50	[.138]	19.76	[.778]	7	1-1825058-7
	ADE07S04	3.50	[.138]	19.76	[.778]	7	1-1825058-6
OBSOLETE	ADE06SB04	3.50	[.138]	17.22	[.678]	6	1-1825058-5
OBSOLETE	ADE06SA04	3.50	[.138]	17.22	[.678]	6	1-1825058-4
	ADE06S04	3.50	[.138]	17.22	[.678]	6	1-1825058-3
OBSOLETE	ADE05SB04	3.50	[.138]	14.68	[.578]	5	1-1825058-2
	ADE05SA04	3.50	[.138]	14.68	[.578]	5	1-1825058-1
6	ADE05S04	3.50	[.138]	14.68	[.578]	5	1-1825058-0
	ADE04SB04	3.50	[.138]	12.14	[.478]	4	1825058-9
OBSOLETE	ADE04SA04	3.50	[.138]	12.14	[.478]	4	1825058-8
	ADE04S04	3.50	[.138]	12.14	[.478]	4	1825058-7
6	ADE03SB04	3.50	[.138]	9.60	[.378]	3	1825058-6
OBSOLETE	ADE03SA04	3.50	[.138]	9.60	[.378]	3	1825058-5
	ADE03S04	3.50	[.138]	9.60	[.378]	3	1825058-4
OBSOLETE	ADE02SB04	3.50	[.138]	7.00	[.276]	2	1825058-3
OBSOLETE	ADE02SA04	3.50	[.138]	7.00	[.276]	2	1825058-2
	ADE02S04	3.50	[.138]	7.00	[.276]	2	1825058-1
T&B P/N		DIM H		DIM L		POSITION	PART NO.

THIS DRAWING IS A CONTROLLED DOCUMENT.			DWN B.S.VISWESWARA 10FEB05		 TE Connectivity					
<div>DIMENSIONS: mm [INCHES]</div> <div></div>			CHK M.SARVER	—				NAME		
			APVD M.SARVER	—						
			PRODUCT SPEC —							
<div>TOLERANCES UNLESS OTHERWISE SPECIFIED:</div> <div>0 PLC ± — 1 PLC ± — 2 PLC ± 0.30[.012] 3 PLC ± — 4 PLC ± — ANGLES ± —</div>			APPLICATION SPEC —		DIP SWITCH, ADE—SMT SERIES					
			—							
			WEIGHT —							
MATERIAL —			FINISH —					SIZE A2	CAGE CODE —	DRAWING NO C=1825058
CUSTOMER DRAWING					SCALE 4:1	SHEET 2 of 3	REV S4			

REVISIONS					
P	LTR	DESCRIPTION	DATE	DWN	APVD
	—	SEE SHEET 1	—	—	—


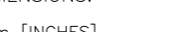


	DESCRIPTION	MATERIAL	DIMENSION	FINISH	REMARKS
1	REEL	SIDE: CARDBOARD CORE: STYLOFOAM	MENTIONED BELOW		
2	EMBOSSSED TAPE	—	MENTIONED BELOW	ANTISTATIC	BLACK
3	TOP COVER TAPE	—	MENTIONED BELOW	ANTISTATIC	TRANSPARENT

4P	$\phi 330.00 \pm 2.10$ [12.992±.082]	$\phi 100$ [3.940]	24.40 $+^{2.00}_0$ [.960 $+^{.790}_0$]	30.40 [1.997]
NO OF POSITION	A	N (MIN)	W1	W2 (MAX)

4P	$\varnothing 1.50 \begin{smallmatrix} +0.10 \\ 0 \end{smallmatrix}$ [$\varnothing.059 \pm .003$]	4.00 ± 0.10 [.157 \pm .003]	16.00 ± 0.10 [.629 \pm .003]	2.00 ± 0.15 [.078 \pm .005]	11.50 ± 0.10 [.453 \pm .003]	7.40 ± 0.10 [.291 \pm .003]
NO OF POSITION	D1	P0	P1	P2	F	K

4P	24.00±0.30 [.944±.011]	12.90±0.10 [.507±.003]	1.75±0.10 [.068±.003]	0.50±0.05 [.020±.001]	12.14±0.50 [.477±.020]	ø 1.50 ^{+0.10} ₀ [ø.059 ^{+0.003} _{.000}]
NO OF POSITION	W	B	E	T	L	DO

THIS DRAWING IS A CONTROLLED DOCUMENT.		DWN B.S.VISWESWARA CHK M.SARVER		10FEB05  TE Connectivity	
DIMENSIONS: mm [INCHES]		TOLERANCES UNLESS OTHERWISE SPECIFIED:		NAME DIP SWITCH, ADE-SMT SERIES	
		APVD M.SARVER			
0 PLC ± - 1 PLC ± - 2 PLC ± 0.30[.012] 3 PLC ± - 4 PLC ± - ANGLES ± -		PRODUCT SPEC -			
MATERIAL -		APPLICATION SPEC -			
FINISH -		WEIGHT -		SIZE A2	GAGE CODE -
				DRAWING NO C-1825058	
				RESTRICTED TO -	
CUSTOMER DRAWING				SCALE 4:1	SHEET 3 OF 3
				REV S4	

Mouser Electronics

Authorized Distributor

Click to View Pricing, Inventory, Delivery & Lifecycle Information:

[TE Connectivity:](#)

[ADE10S04](#)