

THIS DRAWING IS UNPUBLISHED. RELEASED FOR PUBLICATION
 © COPYRIGHT BY TYCO ELECTRONICS CORPORATION. ALL INTERNATIONAL RIGHTS RESERVED.

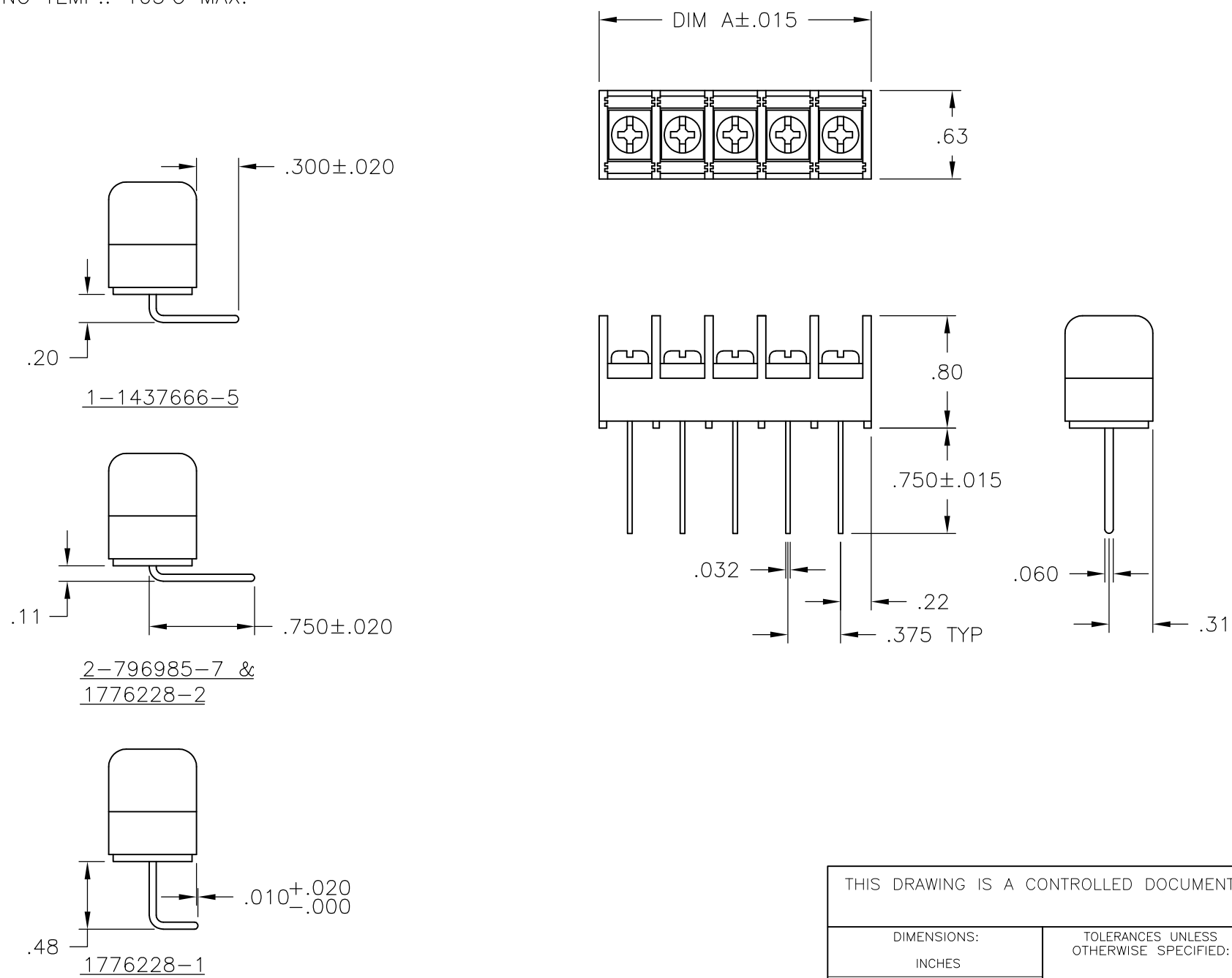
| LOC | DIST | REVISIONS | | | | | |
|-----|------|-----------|-----|---------------------------|---------|-----|------|
| FT | 0 | P | LTR | DESCRIPTION | DATE | DWN | APVD |
| | | | C | REVISED PER ECO-10-013614 | 13OCT10 | HMR | CR |

MATERIAL:
 HOUSING: THERMOPLASTIC, UL94V-0, BLACK.
 TERMINALS: BRIGHT TIN OVER COPPER ALLOY.
 SCREWS: #6-32 STEEL, ZINC PLATING W/ CLEAR CHROMATE.

ELECTRICAL:
 RATED CURRENT UL/CSA:
 CLASS C: 20A, 300V.
 CLASS D: 5A, 600V.
 WIRE RANGE: 12-22 AWG

MECHANICAL:
 RECOMMENDED TORQUE: 7 IN-LB.
 OPERATING TEMP.: 105°C MAX.

| 9.436 | 25 | JC6-W107-25 | 5-1546703-9 |
|--------|-------------|-----------------|-------------|
| 9.061 | 24 | JC6-W107-24 | 5-1546703-8 |
| 8.686 | 23 | JC6-W107-23 | 5-1546703-7 |
| 8.311 | 22 | JC6-W107-22 | 5-1546703-6 |
| 7.936 | 21 | JC6-W107-21 | 5-1546703-5 |
| 7.561 | 20 | JC6-W107-20 | 5-1546703-4 |
| 7.186 | 19 | JC6-W107-19 | 5-1546703-3 |
| 6.811 | 18 | JC6-W107-18 | 5-1546703-2 |
| 6.436 | 17 | JC6-W107-17 | 5-1546703-1 |
| 6.061 | 16 | JC6-W107-16 | 5-1546703-0 |
| 5.686 | 15 | JC6-W107-15 | 4-1546703-9 |
| 5.311 | 14 | JC6-W107-14 | 4-1546703-8 |
| 4.936 | 13 | JC6-W107-13 | 4-1546703-7 |
| 4.561 | 12 | JC6-W107-12 | 4-1546703-6 |
| 4.186 | 11 | JC6-W107-11 | 4-1546703-5 |
| 3.811 | 10 | JC6-W107-10 | 796985-4 |
| 3.436 | 9 | JC6-W107-09 | 4-1546703-4 |
| 3.061 | 8 | JC6-W107-08 | 4-1546703-3 |
| 2.686 | 7 | JC6-W107-07 | 4-1546703-2 |
| 2.311 | 6 | JC6-W107-06 | 2-796985-8 |
| 1.936 | 5 | JC6-W107-05-100 | 1-1437666-5 |
| 1.936 | 5 | JC6-W107-05 | 1-1437666-4 |
| 1.561 | 4 | JC6-W107-04-202 | 1776228-1 |
| 1.561 | 4 | JC6-W107-04-176 | 2-796985-7 |
| 1.561 | 4 | JC6-W107-04 | 4-1546703-1 |
| 1.186 | 3 | JC6-W107-03-233 | 1776228-2 |
| 1.186 | 3 | JC6-W107-03 | 1-1437666-3 |
| .811 | 2 | JC6-W107-02 | 4-1546703-0 |
| DIM. A | NO. OF POS. | CATALOG NUMBER | TE PART NO. |



SEE FIGURE PRELIMINARY
 SEE FIGURE PRELIMINARY
 SEE FIGURE PRELIMINARY

| | | | | |
|--|--|------------------------|---|-----------|
| THIS DRAWING IS A CONTROLLED DOCUMENT. | | DWN S SCHLEGEL 5/12/03 | Tyco Electronics Corporation Harrisburg, PA 17105-3608 | |
| DIMENSIONS: INCHES | | CHK S. YODER 5/27/03 | NAME | |
| TOLERANCES UNLESS OTHERWISE SPECIFIED: | | APVD S. YODER 5/27/03 | JC6-W107-XX ASSEMBLY | |
| 0 PLC ± - | | PRODUCT SPEC | SIZE | CAGE CODE |
| 1 PLC ± - | | APPLICATION SPEC | A3 | 00779 |
| 2 PLC ± .01 | | WEIGHT | DRAWING NO | |
| 3 PLC ± .005 | | CUSTOMER DRAWING | C-1-1437666-3 | |
| 4 PLC ± - | | SCALE 1:1 | SHEET 1 OF 1 | REV C |
| ANGLES ± - | | | | |
| FINISH | | | | |
| MATERIAL | | | | |

Mouser Electronics

Authorized Distributor

Click to View Pricing, Inventory, Delivery & Lifecycle Information:

[TE Connectivity:](#)

[JC6-W107-04-176](#)