



PIN NO.	DIM A MATING LENGTH	DIM B TAIL LENGTH	PCB THICKNESS RANGE ACCOMMODATED BY PIN'S TAIL LENGTH
			ROWS A,B,C,D,E,F,G&H
01*	5.00	4.30	1.60 MIN
54		11.55	1.60 - 3.15
22		12.20	2.95 - 3.80
30		12.95	2.95 - 4.55
05		13.70	2.95 - 5.30
35		14.45	3.05 - 6.05
48		15.20	3.80 - 6.80
40		15.70	4.30 - 7.30
65		16.40	5.00 - 8.00
09		17.10	5.70 - 8.70
02*	5.75	4.30	1.60 MIN
55		11.55	1.60 - 3.15
44		12.20	2.95 - 3.80
31		12.95	2.95 - 4.55
06		13.70	2.95 - 5.30
36		14.45	3.05 - 6.05
49		15.20	3.80 - 6.80
25		15.70	4.30 - 7.30
66		16.40	5.00 - 8.00
10		17.10	5.70 - 8.70
03*	6.50	4.30	1.60 MIN
56		11.55	1.60 - 3.15
45		12.20	2.95 - 3.80
32		12.95	2.95 - 4.55
07		13.70	2.95 - 5.30
37		14.45	3.05 - 6.05
50		15.20	3.80 - 6.80
41		15.70	4.30 - 7.30
24		16.40	5.00 - 8.00
11		17.10	5.70 - 8.70

* STUB PINS - NO REAR PLUG-UP

PIN NO.	DIM A MATING LENGTH	DIM B TAIL LENGTH	PCB THICKNESS RANGE ACCOMMODATED BY PIN'S TAIL LENGTH
			ROWS A,B,C,D,E,F,G&H
04*	7.25	4.30	1.60 MIN
57		11.55	1.60 - 3.15
46		12.20	2.95 - 3.80
33		12.95	2.95 - 4.55
08		13.70	2.95 - 5.30
38		14.45	3.05 - 6.05
51		15.20	3.80 - 6.80
42		15.70	4.30 - 7.30
67		16.40	5.00 - 8.00
12		17.10	5.70 - 8.70
19*	8.00	4.30	1.60 MIN
58		11.55	1.60 - 3.15
47		12.20	2.95 - 3.80
34		12.95	2.95 - 4.55
20		13.70	2.95 - 5.30
39		14.45	3.05 - 6.05
52		15.20	3.80 - 6.80
43		15.70	4.30 - 7.30
68		16.40	5.00 - 8.00
21		17.10	5.70 - 8.70

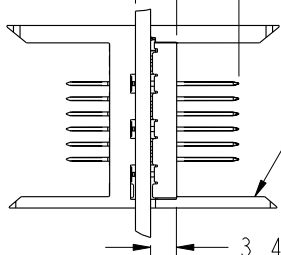
mat'l code SEE NOTE 3				tolerances unless otherwise specified		CUSTOMER		FCI www.fciconnect.com	
ltr	ecr no.	dr	date	linear	0.X ±0.3	projection	COPY	title VERTICAL SIGNAL HDR 8 ROW P.F. 96 POS. SELECT LOAD EXT.	product family METRAL
P					0.XX ±0.13				
					.XXX ±.051				
				angles	0° ±2°	MM ←→ scale 1:1	A	size 84965	code 213 sheet 2 of 5
				dr	E. KROPER. 2001-01-15				
				enr	J. VOLSTORF 2001-01-15				
				chr	J. VOLSTORF 2001-01-15	cage code 22526	3	4	B
				appd	J. VOLSTORF 2001-01-15				
sheet index	revision sheet								



PRODUCT NUMBER

SEE SHEET 1

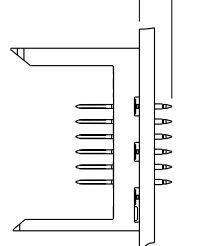
DIM B
DIM C



SHROUD
(ORDER SEPERATELY)

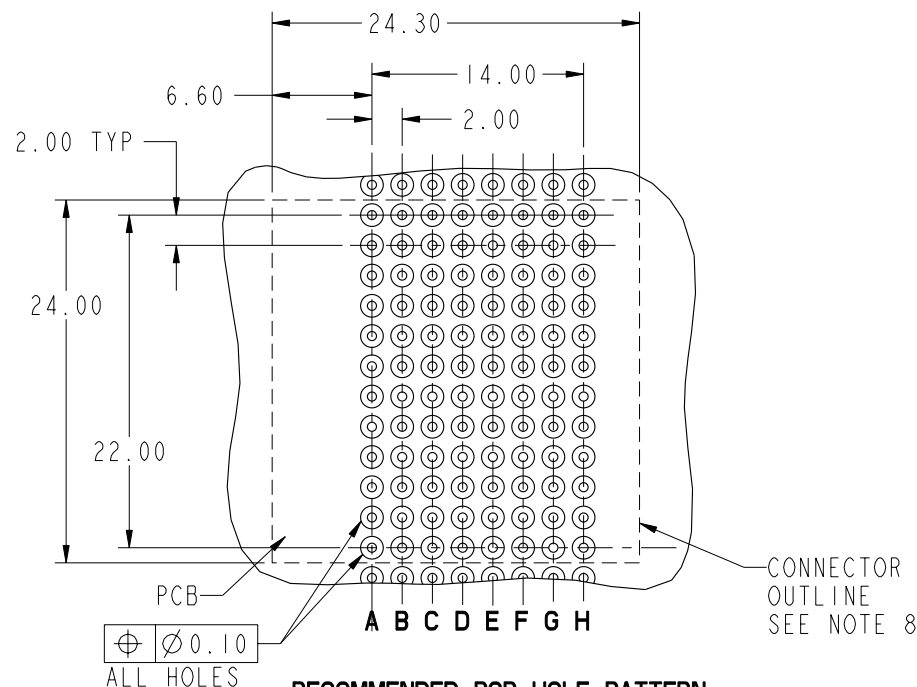
REAR PLUG-UP

DIM B

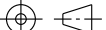
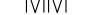


STUB MOUNT

PRESS-FIT HOLES	OPTION 1
HOLE DIAMETER AFTER PLATING	$\varnothing 0.65-0.80$
DRILLED HOLE	$\varnothing 0.81-0.86$ ($\varnothing 0.85$ DRILL)
COPPER PLATING	0.025 MIN
SnPb PLATING	0.005-0.015



RECOMMENDED PCB HOLE PATTERN
(COMPONENT SIDE)
SEE PRINT 58351 FOR
ADDITIONAL PCB INFORMATION

mat'l code SEE NOTE 3				tolerances unless otherwise specified			CUSTOMER		FCi www.fciconnect.com	
ltr	ecn no.	dr	date	linear	0.X ± 0.3		COPY		title VERTICAL SIGNAL HDR 8 ROW P.F. 96 POS. SELECT LOAD EXT	
P					0.XX ± 0.13		projection 			
					.XXX ± .051					
				angles	0° ± 2°				product family METRAL	
				dr	E. KROPER.	2001-01-15	scale 1:1		code 213	
				enr	J. VOLSTORF	2001-01-15			size A	
				chr	J. VOLSTORF	2001-01-15			dwg no 84965	
				appd	J. VOLSTORF	2001-01-15			sheet 3	
sheet index		revision sheet								

Pro/E

3

cage code
22526

4

PDM: Rev:P

STATUS: Released Printed: May 13, 2011



SELECT LOAD PATTERNS													
PRODUCT #	ROW	CONTACT CODE											
		1	2	3	4	5	6	7	8	9	10	11	12
84965-X02001 SEE NOTE 13 LEAD FREE OPTION	H	-	-	-	-	-	-	-	-	-	-	-	-
	G	-	-	-	-	-	-	-	-	-	-	-	-
	F	02	02	02	02	02	02	02	02	02	02	02	02
	E	02	02	02	02	02	02	02	02	02	02	02	02
	D	02	02	02	02	02	02	02	02	02	02	02	02
	C	02	02	02	02	02	02	02	02	02	02	02	02
	B	02	02	02	02	02	02	02	02	02	02	02	02
	A	02	02	02	02	02	02	02	02	02	02	02	02
	GND	-	-	-	-	-	-	-	-	-	-	-	-
PRODUCT #	ROW	CONTACT CODE											
		1	2	3	4	5	6	7	8	9	10	11	12
84965-X02002 SEE NOTE 13 LEAD FREE OPTION	H	-	-	-	-	-	-	-	-	-	-	-	-
	G	-	-	-	-	-	-	-	-	-	-	-	-
	F	-	-	-	-	-	-	-	-	-	-	-	-
	E	02	02	02	02	02	02	02	02	02	02	04	04
	D	02	02	02	02	02	02	02	02	02	02	04	04
	C	02	02	02	02	02	02	02	02	02	02	19	19
	B	02	02	02	02	02	02	02	02	02	02	19	19
	A	02	02	02	02	02	02	02	02	02	02	19	19
	GND	-	-	-	-	-	-	-	-	-	-	-	-
PRODUCT #	ROW	CONTACT CODE											
		1	2	3	4	5	6	7	8	9	10	11	12
84965-X02003 SEE NOTE 13 LEAD FREE OPTION	H	-	-	-	-	-	-	-	-	-	-	-	-
	G	-	-	-	-	-	-	-	-	-	-	-	-
	F	-	-	-	-	-	-	-	-	-	-	-	-
	E	02	02	02	02	02	02	02	02	02	02	02	02
	D	02	02	02	02	02	02	02	02	02	02	02	02
	C	02	02	02	02	02	02	02	02	02	02	02	02
	B	02	02	02	02	02	02	02	02	02	02	02	02
	A	02	02	02	02	02	02	02	02	02	02	02	02
	GND	-	-	-	-	-	-	-	-	-	-	-	-

SELECT LOAD PATTERNS													
PRODUCT #	ROW	CONTACT CODE											
		1	2	3	4	5	6	7	8	9	10	11	12
84965-X02004 SEE NOTE 13 LEAD FREE OPTION	H	-	-	-	-	-	-	-	-	-	-	-	-
	G	-	-	-	-	-	-	-	-	-	-	-	-
	F	02	02	02	02	02	02	02	02	02	02	02	02
	E	02	02	02	02	02	02	02	02	02	02	04	04
	D	02	02	02	02	02	02	02	02	02	02	04	04
	C	02	02	02	02	02	02	02	02	02	02	02	02
	B	02	02	02	02	02	02	02	02	02	02	19	19
	A	02	02	02	02	02	02	02	02	02	02	19	19
	GND	-	-	-	-	-	-	-	-	-	-	-	-
PRODUCT #	ROW	CONTACT CODE											
		1	2	3	4	5	6	7	8	9	10	11	12
84965-X02005 SEE NOTE 13 LEAD FREE OPTION	H	-	-	-	-	-	-	-	-	-	-	-	-
	G	-	-	-	-	-	-	-	-	-	-	-	-
	F	-	-	-	-	-	-	-	-	-	-	-	-
	E	02	02	02	02	02	02	02	02	02	02	02	02
	D	02	02	02	02	02	02	02	02	02	02	02	02
	C	02	02	02	02	02	02	02	02	02	02	02	19
	B	02	02	02	02	02	02	02	02	02	02	02	02
	A	02	02	02	02	02	02	02	02	02	02	02	19
	GND	-	-	-	-	-	-	-	-	-	-	-	-
PRODUCT #	ROW	CONTACT CODE											
		1	2	3	4	5	6	7	8	9	10	11	12
84965-X02006 SEE NOTE 13 LEAD FREE OPTION	H	-	-	-	-	-	-	-	-	-	-	-	-
	G	-	-	-	-	-	-	-	-	-	-	-	-
	F	02	02	02	02	02	02	02	02	02	02	02	02
	E	02	02	02	02	02	02	02	02	19	02	02	19
	D	02	02	02	02	02	02	02	02	02	02	02	02
	C	02	02	02	02	02	02	02	02	02	02	02	02
	B	02	02	02	02	02	02	02	02	02	02	02	02
	A	02	02	02	02	02	02	02	02	02	02	02	02
	GND	-	-	-	-	-	-	-	-	-	-	-	-

mat'l code SEE NOTE 3				tolerances unless otherwise specified			CUSTOMER		www.fciconnect.com	
ltr	ecr no.	dr	date	linear	0.X ±0.3		COPY		title VERTICAL SIGNAL HDR 8 ROW P.F. 96 POS. SELECT LOAD EXT.	
P					0.XX ±0.13		projection			
					.XXX ±.051					
				angles	0° ±2°				product family METRAL	
				dr	E. KROPER.	2001-01-15	scale			
				enrg	J. VOLSTORF	2001-01-15	1:1			
				chr	J. VOLSTORF	2001-01-15			size A	
				appd	J. VOLSTORF	2001-01-15				
sheet index		revision sheet							code 213	
									sheet 4	



PRODUCT NUMBER

SEE SHEET 1

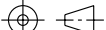
NOTES:

1. SEE APPLICATION SPECIFICATION GS-20-010 FOR INFORMATION ON AVAILABLE TOOLING, CIRCUIT BOARD DESIGN CONSIDERATIONS, REPAIR PROCEDURES AND PRODUCT OFFERINGS.
2. UNLESS OTHERWISE SPECIFIED, ALL DIMENSIONS AND TOLERANCES ARE IN ACCORDANCE WITH ASME Y14.5M, 1994
3. HOUSING MATERIAL: LIQUID CRYSTAL POLYMER, 30% GLASS FILLED, FLAME RETARDANT PER UL 94-V0. PIN MATERIAL: PHOSPHOR BRONZE
4. PLATING ON CONTACT AREAS PER PERFORMANCE LEVELS SHOWN IN TABLE ON SHEET 1. PLATING ON "LF" TAILS IS Sn ONLY. PLATING ON ALL OTHER TAILS IS SnPb.
5. DIMENSIONAL RESTRICTIONS OF PINS IN HEADERS.
DIM A : 5.0mm MIN, 8.0mm MAX FOR ROWS A-H
DIM C : 5.0mm MIN, 8.0mm MAX FOR ROWS A-H
6. THE MIN PCB THICKNESS FOR REAR PLUG-UP APPLICATIONS IS 1.6mm
7. USE SHROUD 98173-102 FOR REAR PLUG-UP APPLICATIONS.
8. THE 'CONNECTOR OUTLINE' IS THE MIN OUTLINE REQUIRED. TO DETERMINE THE OUTLINE NECESSARY TO PERMIT THE VARIOUS TYPES OF REPAIR OPERATIONS, SEE APPLICATION SPECIFICATION GS-20-010.

9. CURRENT RATING : 1 AMP PER PIN
10. TEMPERATURE RANGE : -55°C TO +105°C
11. P/N 84965-X02ZZZLF



12. PRODUCTS WHERE THE PART NUMBER ENDS IN "LF" MEET EUROPEAN UNION DIRECTIVES AND OTHER COUNTRY REGULATIONS AS DESCRIBED IN GS-22-008. ALL PRODUCTS WILL WITHSTAND EXPOSURE TO 260° C FOR 60 SECONDS IN A CONVECTION, INFRA-RED OR VAPOR PHASE REFLOW OVEN.
13. FOR LEAD FREE PART NUMBERS ADD "LF" SUFFIX. EXAMPLE:84965-X02ZZZLF
14. PIN TYPE IS AT THE MANUFACTURERS OPTION AND CAN BE EITHER BABY-H OR EYE OF THE NEEDLE STYLE

mat'l code SEE NOTE 3				tolerances unless otherwise specified		CUSTOMER		FCI www.fciconnect.com			
ltr	ecr no.	dr	date	linear	0.X ±0.3		COPY		title VERTICAL SIGNAL HDR 8 ROW P.F. 96 POS. SELECT LOAD EXT.		
P					0.XX ±0.13		projection 				
					.XXX ±.051						
				angles	0° ±2°						
		dr		E. KROPER.	2001-01-15	MM ←→ scale 1:1		product family		METRAL	code
		enrg		J. VOLSTORF	2001-01-15			size	dwg no	213	
		chr		J. VOLSTORF	2001-01-15			A	84965	sheet	
		appd		J. VOLSTORF	2001-01-15					5	
sheet index		revision sheet									

cage code 22526

Pro/E

3

4

PDM: Rev:P

STATUS: Released

Printed: May 13, 2011

Mouser Electronics

Authorized Distributor

Click to View Pricing, Inventory, Delivery & Lifecycle Information:

[FCI / Amphenol:](#)

[84965-302004LF](#) [84965-102001LF](#) [84965-102003LF](#) [84965-102004LF](#) [84965-302001LF](#) [84965-302003LF](#) [84965-302002LF](#) [84965-102002LF](#)