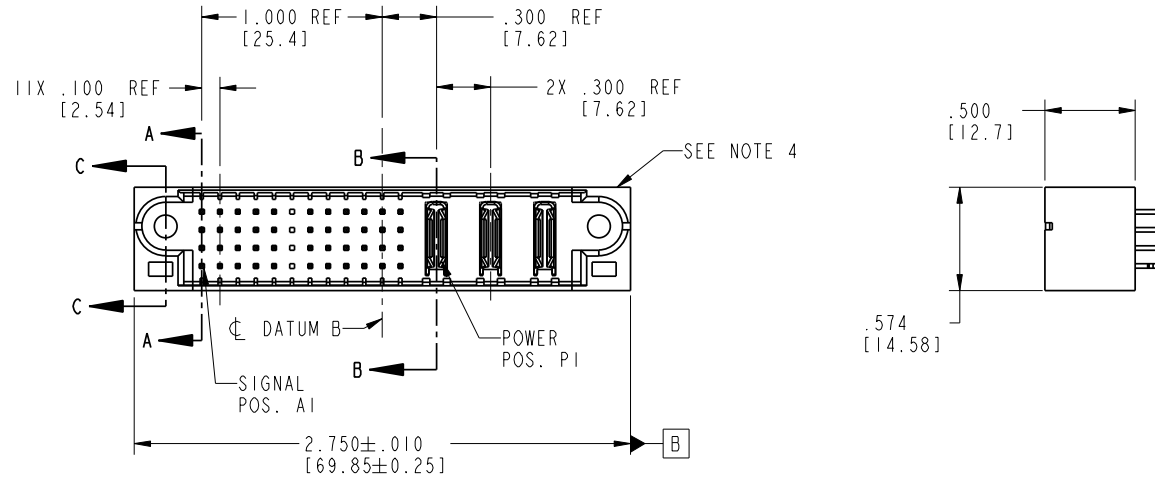


Tous droits strictement reserves. Reproduction ou communication a des tiers interdite sous quelque forme que ce soit sans autorisation écrite du propriétaire. Propriété de c FCI. Droits de reproduction FCI.

A
FCI

All rights strictly reserved. Reproduction or issue to third parties in any form without written authority from the proprietor. Property of FCI. Copyright FCI.

PRODUCT NO.	ROWS	SIGNAL												POWER			E2
		E1	1	2	3	4	5	6	7	8	9	10	11	12	P1	P2	P3
51952-063-- Note: ③	0 C B A																



CODE	DIM "M" MATING LENGTH	CONTACT TYPE
PA	N/A [N/A]	POWER
E	.270 [6.86]	SIGNAL
HA	N/A [N/A]	HOLD-DOWN
H	.220 [5.59]	SIGNAL
X	OMITTED	OMITTED

mat'l code				tolerances unless otherwise specified		CUSTOMER		A FCI		www.fciconnect.com	
lir	ecn no.	dr	date	linear	angular	projection	INCH/MM	product family	code	size	dwg no
A	DG05-0075	JM	04/21/05	.XX±.01/0.X±0.3	0°±2°		1:1	PwrBlade	213	A	51952-063
B	DG05-0105	JM	05/11/05	.XXX±.005/0.XX±0.13							
C	DG05-0563	RYAN	12/23/05	.XXX±.0020/0.XXX±0.051							
				dr	JM Guo	04/21/05					
				enrg	SLUO	04/21/05					
				chr	VICTOR LIN	04/21/05					
				appd	JOSEPH HSIA	04/21/05					
sheet index	revision	C	C	C	C						
	sheet	1	2	3	4						

Pro/E

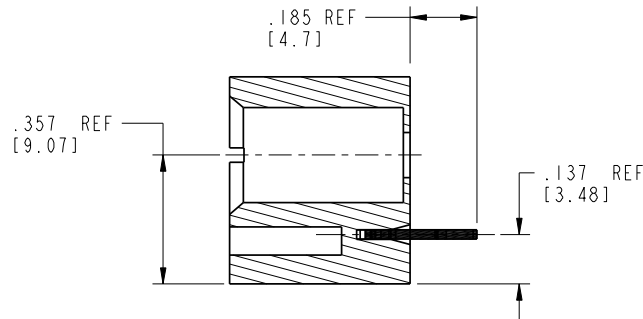
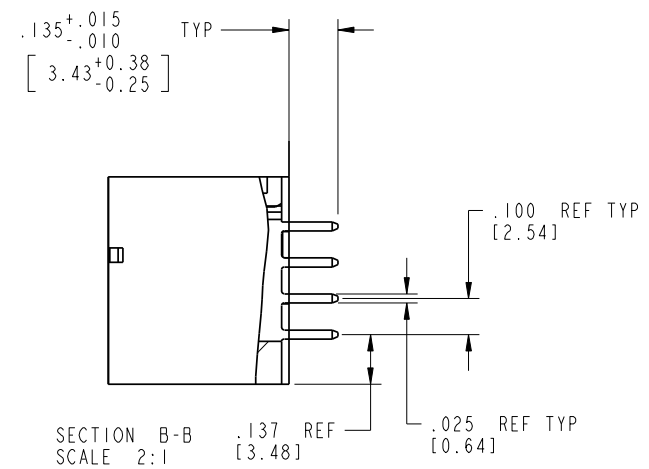
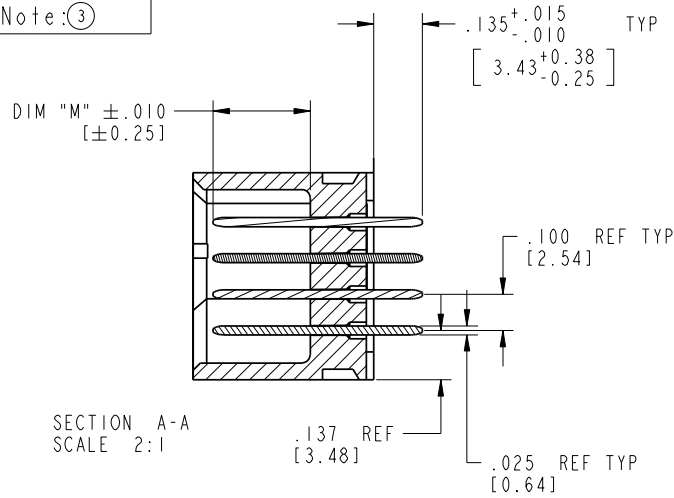
cage code 22526

Tous droits strictement réservés. Reproduction ou communication à des tiers interdite sans quelque forme que ce soit sans autorisation écrite du propriétaire. Propriété de c FCI. Droits de reproduction FCI.

A
FCI

All rights strictly reserved. Reproduction or issue to third parties in any form whatever is not permitted without written authority from the proprietor. Property of FCI. Copyright FCI.

PRODUCT NUMBER
51952-063--
Note: (3)



SECTION C-C
SCALE 2:1

mat'l code				tolerances unless otherwise specified		CUSTOMER		A FCI	
SEE NOTE 2						COPY		www.fciconnect.com	
lir	ecn no.	dr	date	linear	.XX±.01/0.X±0.3	projection		title	
C					.XXX±.005/0.XX±0.13			48S + 3P	
				angles	.XXX±.0020/0.XXX±0.051			VERTICAL SOLDER HEADER	
				dr	JM Guo 04/21/05	INCH/MM		product family	
				enrg	SLUO 04/21/05	scale	PwrBlade		code
				chr	VICTOR LIN 04/21/05	1:1	size		213
				appd	JOSEPH HSIA 04/21/05		A 51952-063		sheet
sheet index	revision	sheet							2 of 4

code code 22526

Pro/E

Tous droits strictement reserves. Reproduction ou communication a des tiers interdite sous quelque forme que ce soit sans autorisation écrite du propriétaire. Propriété de c FCI. Droits de reproduction FCI.

A
FCI

All rights strictly reserved. Reproduction or issue to third parties in any form whatever is not permitted without written authority from the proprietor. Property of FCI. Copyright FCI.

A

B

PRODUCT NUMBER																																																																																																		
51952-063--																																																																																																		
Note: (3)																																																																																																		
NOTES:																																																																																																		
1. DIMENSIONS AND TOLERANCES ARE IN ACCORDANCE WITH ASME Y14.5M, 1994 UNLESS OTHERWISE SPECIFIED.																																																																																																		
CONNECTOR NOTES:																																																																																																		
(2) HOUSING MATERIAL: UL 94 V-0 GLASS FILLED HIGH-TEMP THERMOPLASTIC																																																																																																		
POWER CONTACT MATERIAL: COPPER ALLOY																																																																																																		
SIGNAL PIN MATERIAL: COPPER ALLOY																																																																																																		
3. PLATING:																																																																																																		
51952-063: SIGNAL PIN: 30u"/0.76um Au OVER 50u"/1.27um Ni ON THE CONTACT AREA AND 100u"/2.54um SnPb OVER 50u"/1.27um Ni ON THE TERMINATION AREA																																																																																																		
POWER PIN: 30u"/0.76um Au OVER 50u"/1.27um Ni ON THE CONTACT AREA AND 100u"/2.54um SnPb OVER 50u"/1.27um Ni ON THE TERMINATION AREA																																																																																																		
51952-063LF: SIGNAL PIN: 30u"/0.76um Au OVER 50u"/1.27um Ni ON THE CONTACT AREA AND 78u"/2.00um Sn OVER 50u"/1.27um Ni ON THE TERMINATION AREA																																																																																																		
POWER PIN: 30u"/0.76um Au OVER 50u"/1.27um Ni ON THE CONTACT AREA AND 78u"/2.00um Sn OVER 50u"/1.27um Ni ON THE TERMINATION AREA																																																																																																		
PART NUMBER 51952-063LF MEETS EUROPEAN UNION DIRECTIVE AND OTHER COUNTRY REGULATIONS AS DESCRIBED IN GS-22-008.																																																																																																		
THE HOUSING WILL WITHSTAND EXPOSURE TO 260° PEAK TEMPERATURE FOR 10 SECONDS IN A WAVE SOLDER APPLICATION WITH A CIRCUIT BOARD.																																																																																																		
(4) MANUFACTURER'S NAME, P/N, AND DATE CODE TO APPEAR ON THIS SURFACE.																																																																																																		
5. PRODUCT SPECIFICATION GS-12-149. APPLICATION SPECIFICATION BUS-20-067.																																																																																																		
6. PACKAGED IN TRAYS.																																																																																																		
PCB NOTES:																																																																																																		
7. ALL HOLE DIAMETERS ARE FINISHED HOLE SIZE.																																																																																																		
8. MOUNTING HOLES, WHERE APPLICABLE, ARE UNPLATED.																																																																																																		
(9) $\varnothing .0453 \pm .0010$ [1.151 \pm 0.025] DRILLED HOLES PLATED WITH .0003 [0.008] MIN SnPb OVER .001 [0.03] TO .003 [0.08] Cu PLATING TO ACHIEVE $\varnothing .040 \pm .003$ [1.02 \pm .07] HOLE.																																																																																																		
(10) "DIM XXX" TO BE DETERMINED BY THE CUSTOMER.																																																																																																		
(11) CONNECTOR KEEP-OUT ZONE.																																																																																																		
<table border="1"><thead><tr><th colspan="4">mat'l code</th><th colspan="2">tolerances unless otherwise specified</th><th colspan="2">CUSTOMER</th><th colspan="2">A FCI</th></tr><tr><th>lfr</th><th>ecn no.</th><th>dr</th><th>date</th><th>linear</th><th>angles</th><th colspan="2">COPY</th><th colspan="2">www.fciconnect.com</th></tr></thead><tbody><tr><td>C</td><td></td><td></td><td></td><td>$.XX \pm .01 / 0.X \pm 0.3$</td><td></td><td>projection</td><td></td><td>title</td><td>48S + 3P</td></tr><tr><td></td><td></td><td></td><td></td><td>$.XXX \pm .005 / 0.XX \pm 0.13$</td><td></td><td></td><td></td><td colspan="2">VERTICAL SOLDER HEADER</td></tr><tr><td></td><td></td><td></td><td></td><td>$.XXX \pm .0020 / 0.XXX \pm 0.051$</td><td>$0^\circ \pm 2^\circ$</td><td></td><td></td><td colspan="2"></td></tr><tr><td></td><td></td><td></td><td></td><td>dr</td><td>JM Guo</td><td>04/21/05</td><td rowspan="4">INCH/MM</td><td>product family</td><td>PwrBlade</td></tr><tr><td></td><td></td><td></td><td></td><td>enrg</td><td>SLUO</td><td>04/21/05</td><td>size</td><td>dwg no</td></tr><tr><td></td><td></td><td></td><td></td><td>chr</td><td>VICTOR LIN</td><td>04/21/05</td><td rowspan="2">A</td><td rowspan="2">51952-063</td></tr><tr><td></td><td></td><td></td><td></td><td>appd</td><td>JOSEPH HSIA</td><td>04/21/05</td><td>code</td><td>213</td></tr><tr><td>sheet index</td><td>revision</td><td>sheet</td><td></td><td></td><td></td><td></td><td>scale</td><td>1:1</td><td>sheet 4 of 4</td></tr></tbody></table>		mat'l code				tolerances unless otherwise specified		CUSTOMER		A FCI		lfr	ecn no.	dr	date	linear	angles	COPY		www.fciconnect.com		C				$.XX \pm .01 / 0.X \pm 0.3$		projection		title	48S + 3P					$.XXX \pm .005 / 0.XX \pm 0.13$				VERTICAL SOLDER HEADER						$.XXX \pm .0020 / 0.XXX \pm 0.051$	$0^\circ \pm 2^\circ$									dr	JM Guo	04/21/05	INCH/MM	product family	PwrBlade					enrg	SLUO	04/21/05	size	dwg no					chr	VICTOR LIN	04/21/05	A	51952-063					appd	JOSEPH HSIA	04/21/05	code	213	sheet index	revision	sheet					scale	1:1	sheet 4 of 4
mat'l code				tolerances unless otherwise specified		CUSTOMER		A FCI																																																																																										
lfr	ecn no.	dr	date	linear	angles	COPY		www.fciconnect.com																																																																																										
C				$.XX \pm .01 / 0.X \pm 0.3$		projection		title	48S + 3P																																																																																									
				$.XXX \pm .005 / 0.XX \pm 0.13$				VERTICAL SOLDER HEADER																																																																																										
				$.XXX \pm .0020 / 0.XXX \pm 0.051$	$0^\circ \pm 2^\circ$																																																																																													
				dr	JM Guo	04/21/05	INCH/MM	product family	PwrBlade																																																																																									
				enrg	SLUO	04/21/05		size	dwg no																																																																																									
				chr	VICTOR LIN	04/21/05		A	51952-063																																																																																									
				appd	JOSEPH HSIA	04/21/05				code	213																																																																																							
sheet index	revision	sheet					scale	1:1	sheet 4 of 4																																																																																									
Pro/E																																																																																																		
3																																																																																																		
code code 22526																																																																																																		
4																																																																																																		

A

B

Mouser Electronics

Authorized Distributor

Click to View Pricing, Inventory, Delivery & Lifecycle Information:

[FCI / Amphenol:](#)

[51952-063LF](#) [51952-063](#)