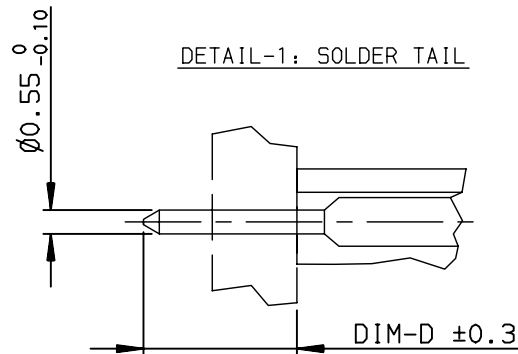
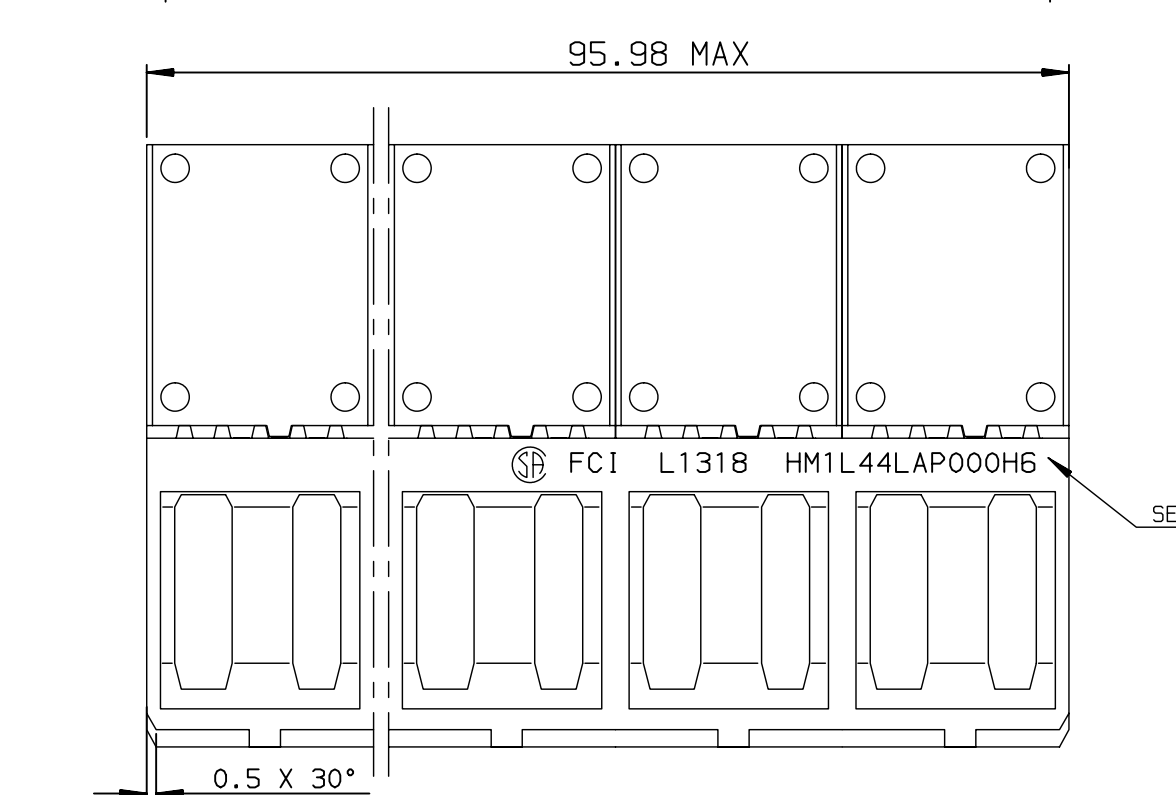
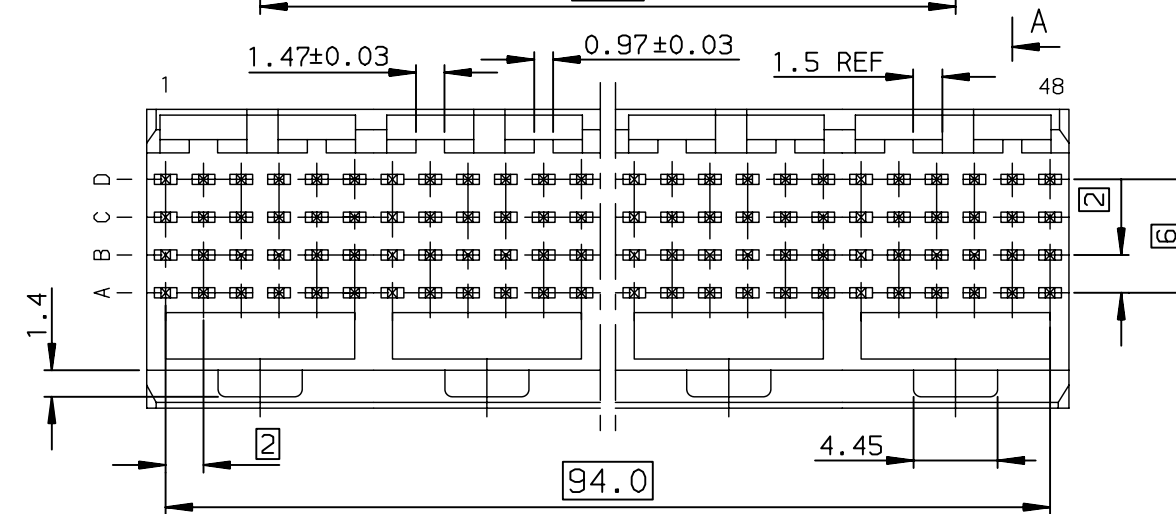
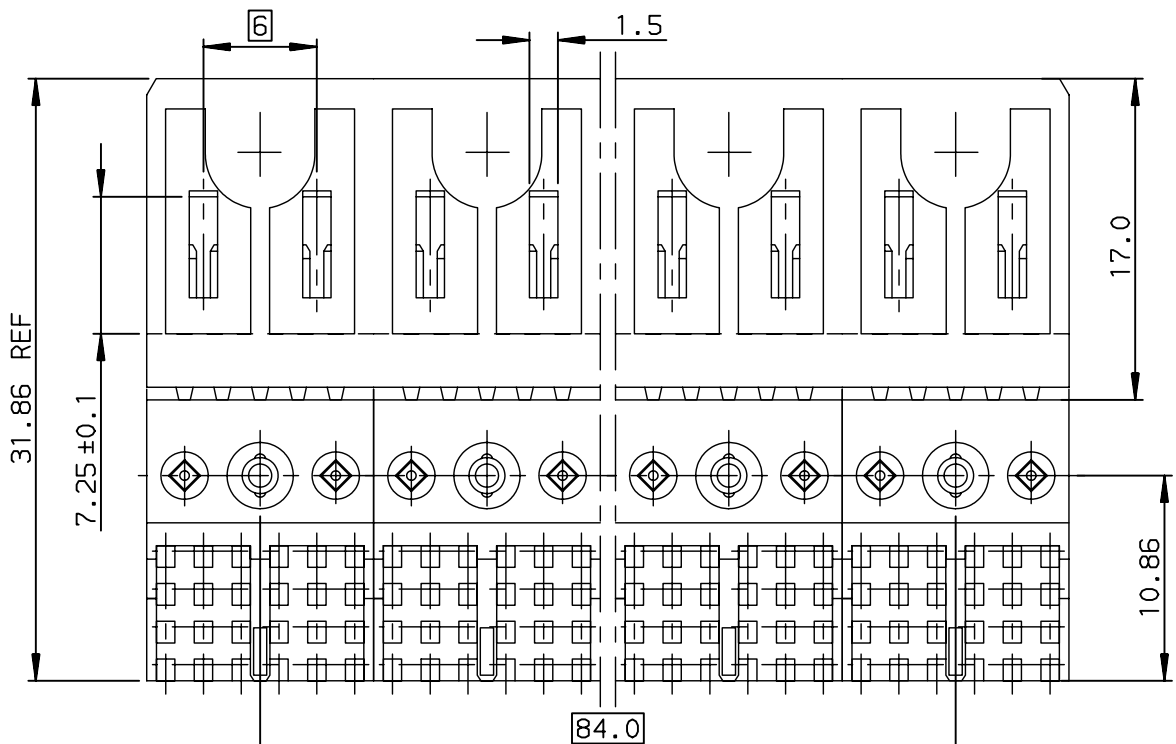


A

B

C

D



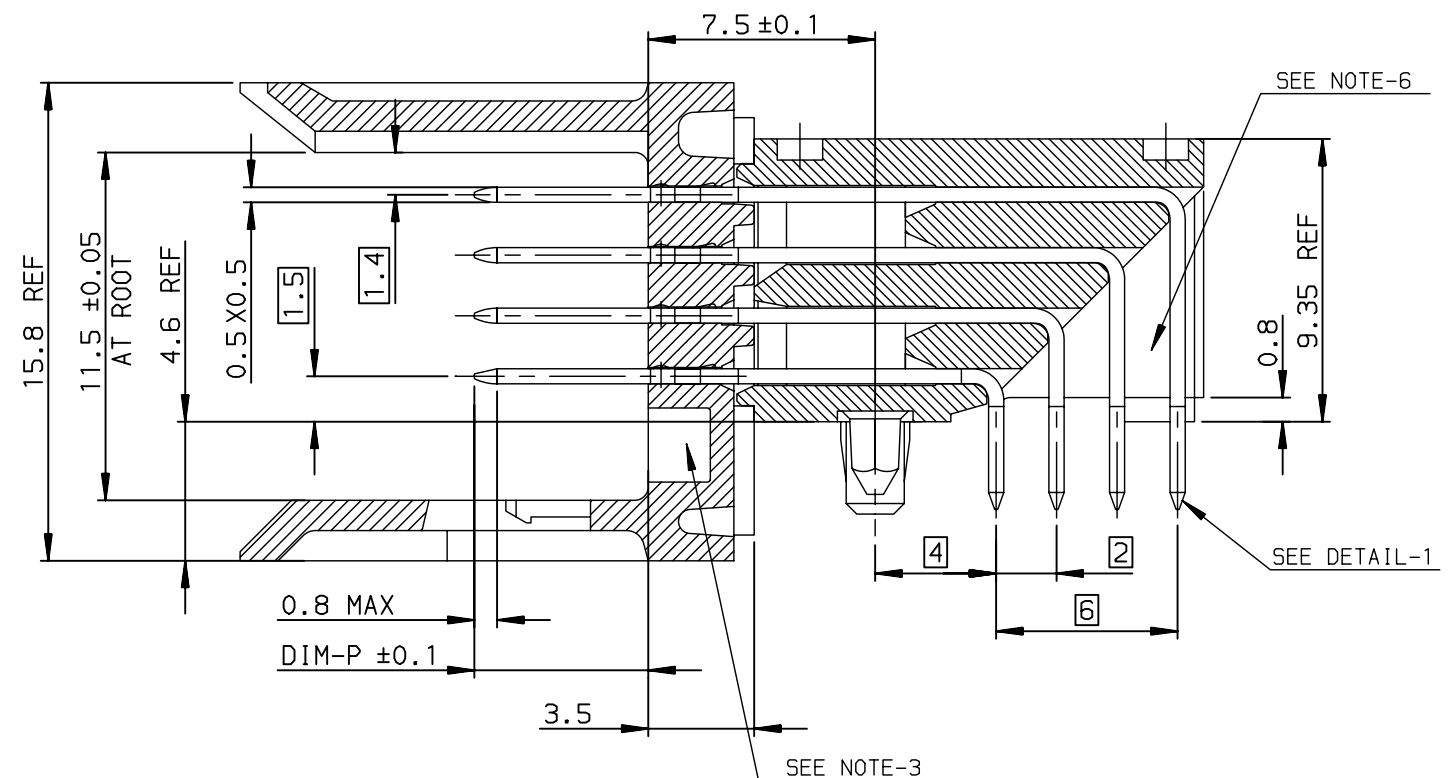
8 MODULE SIZE

GENERAL CHARACTERISTICS AND ROHS INFORMATIONS:

SEE PRODUCT SPECIFICATION GS-12-446

- NORMINATIVE REF = IEC-61076-4-104  
NOTE-2: ONE CENTER PEG FOR HOLD DOWN FORCE  
NOTE-3: CODING RECESS FOR 8MM EXTENDED KEYS  
NOTE-4: PRODUCT MARKING = FCI + BATCH CODE + PRODUCT NUMBER  
FOR 8 MODULE SIZE, ADD CSA LOGO MARKING  
NOTE-6: CENTRAL WALL WITH END REAR SUPPORT  
NOTE-7: PACKAGING IN TRAY + COVER  
IF SUFFIX "P" IS ADDED IN P/N PACKAGING IS IN TRAYS  
BUT CONNECTOR MARKING IS WITHOUT "P"  
EXAMPLE: HM1XXXXXXXXXH6P, MARKED HM1XXXXXXXXXH6




SECTION-A SCALE: 4/1



OTHERS INFORMATIONS, SEE DRW C-8626-0157-2

European Views

rev	ecn no	dr	date
F	-	CHA	2003/07/03
G	LS05-0056	LGO	2005/05/02
H	LS06-0097	LGO	2006/07/21
J	LS07-0184	MLE	2007/07/24
-	-	-	-
-	-	-	-
-	-	-	-

www.fciconnect.com			surface ISO 1302		tolerance std ISO 406 ISO 1101		projection 		mm 	
TOLERANCES UNLESS OTHERWISE SPECIFIED										
Dr	CHAMPION	1995/01/25	ANGULAR	LINEAR	0.X	± 0.1	size A3	Scale 2.5:1		
Eng	LENOIR	1995/01/25			0.XX	± 0.1				
Chr	LEGARE	1995/01/25			0.XXX	± 0.1				
Appr	LEGARE	1995/01/25	0.XX' ± 2°				ECN	LS07-0184		
			Product family				METRAL		Spec ref -	
			title			METRAL RA HDR WB CONVERGE			dwg no	
			4x48 CTS - STB PUSH PEG			C-8626-0157-1			Rev. J	
			catalog no			-			CUSTOMER sheet 1 of 2	



# Mouser Electronics

Authorized Distributor

Click to View Pricing, Inventory, Delivery & Lifecycle Information:

[FCI / Amphenol:](#)

[HM1L44AAP000H6PLF](#) [HM1L44LAP000H6PLF](#) [HM1L44DAP000H6PLF](#)