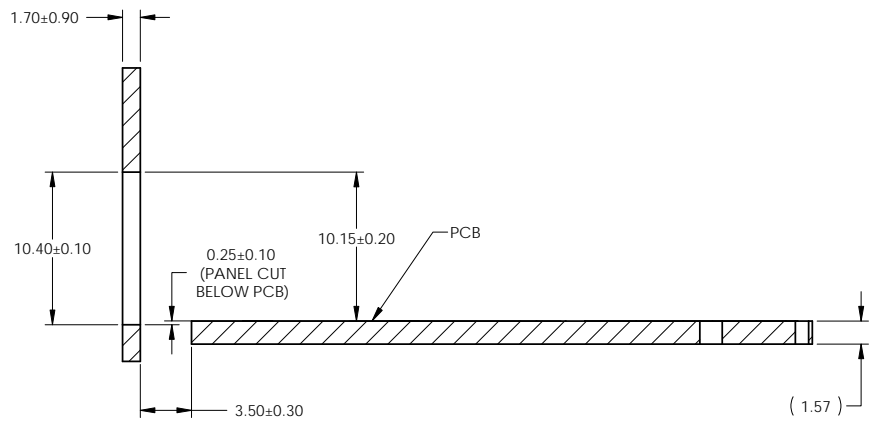
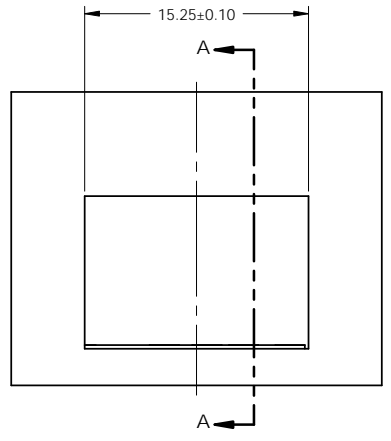
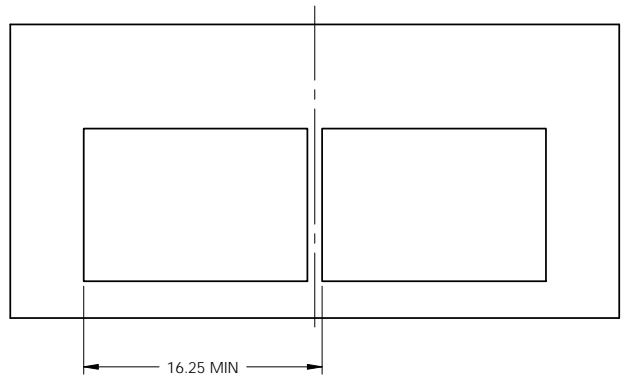


REVISIONS				
REV.	ECN	DESCRIPTION	DATE	APPROVED
A		INITIAL RELEASE	MAR 10'11	JASON



**RECOMMENDED BEZEL DESIGN
(SINGLE SIDE CAGE MOUNT)**

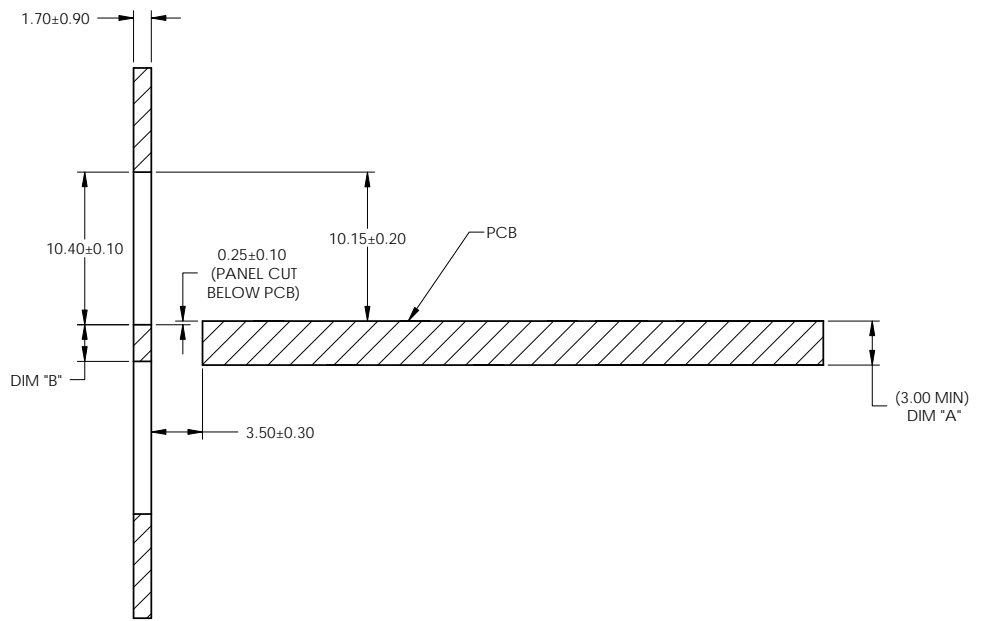
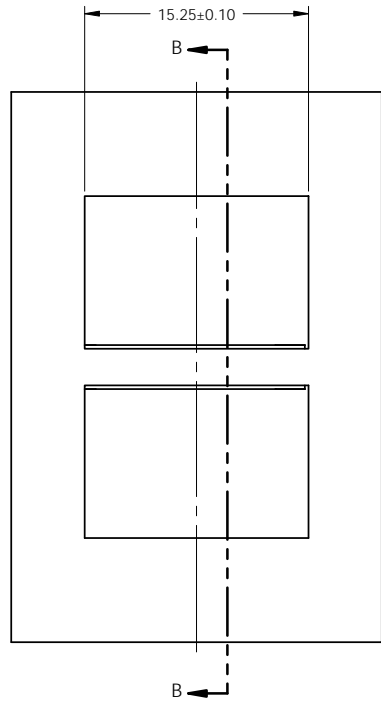


DO NOT SCALE DRAWING

THIS DOCUMENT CONTAINS PROPRIETARY INFORMATION AND SUCH INFORMATION MAY NOT BE DISCLOSED TO OTHERS FOR ANY PURPOSE OR USED FOR MANUFACTURING PURPOSES WITHOUT PERMISSION FROM AMPHENOL CANADA CORP.

UNLESS OTHERWISE SPECIFIED DIMENSIONS ARE IN MILLIMETERS TOLERANCES ARE:		APPROVALS		DATE		Amphenol Canada Corp.				
DECIMALS X.X ± 0.15 X.XX ± 0.10		ANGLES ± 0.5°		DRAWN	MIKE.H	MAR 10'11	TITLE			
MATERIAL AND FINISH SEE NOTE		CHECKED	JASON	MAR 10'11	1X1 SFP CAGE					
REF.		QA APPD	X	X						
CODE IDENT. NO.	03554	E APPD	X	X	SIZE	A3	DWG. NO.	P-U77-A111L-X081	REV.	A
		DWG APPD	JASON	MAR 10'11	SCALE	3:1	PROJECT		SHEET	2 OF 5

REVISIONS				
REV	ECN	DESCRIPTION	DATE	APPROVED
A		INITIAL RELEASE	MAR 10'11	JASON



SECTION B-B

**RECOMMENDED BEZEL DESIGN
(BELLY TO BELLY CAGE MOUNT)**

NOTE:
 PANEL CUTOUTS SIZES PER SFF 8433 SPEC.
 FOR BELLY TO BELLY MOUNTING,
 DIM "A" (PCB THICKNESS) IS 3.0 mm MIN.
 DIM "B" RELATED TO DIM "A". FOR
 DIM "B"=DIM "A"-0.80mm. THE PANEL
 CUTOUT 10.40mm MIGHT BE INCREASED
 UP TO 10.80mm IN ORDER TO
 ACCOMMODATE PCB TOLERANCE.

DO NOT SCALE DRAWING

THIS DOCUMENT CONTAINS PROPRIETARY INFORMATION AND SUCH INFORMATION MAY NOT BE DISCLOSED TO OTHERS FOR ANY PURPOSE OR USED FOR MANUFACTURING PURPOSES WITHOUT PERMISSION FROM AMPHENOL CANADA CORP.

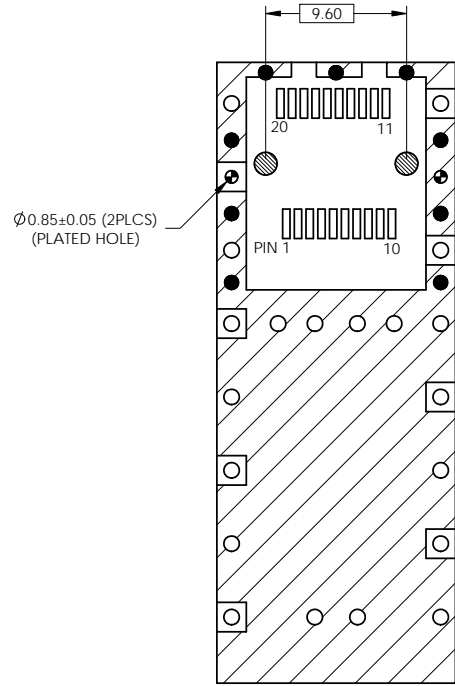
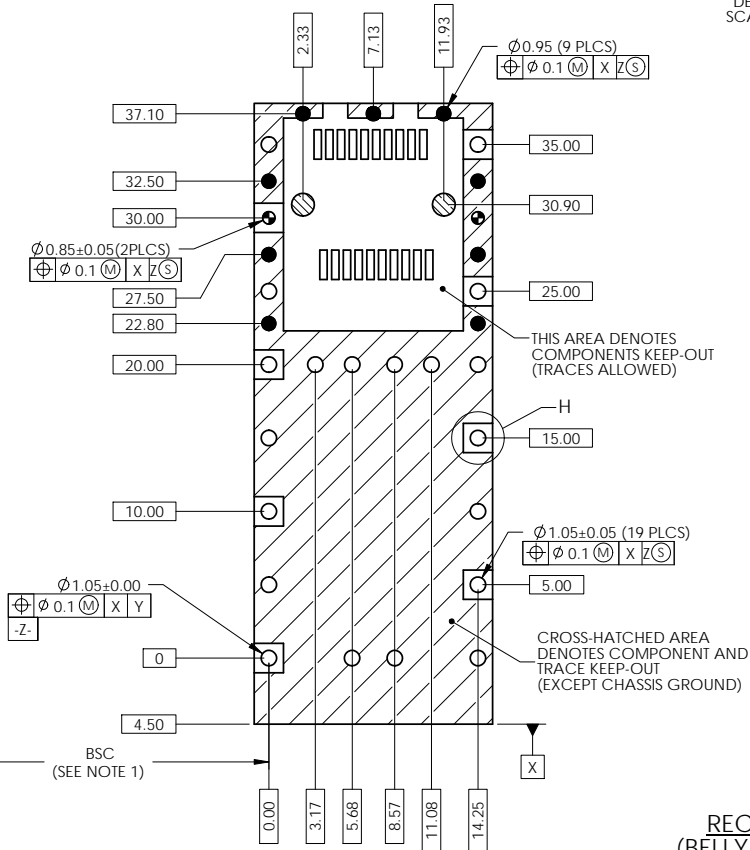
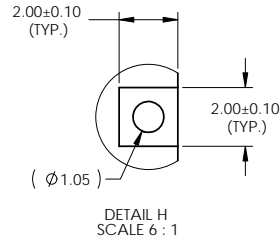
UNLESS OTHERWISE SPECIFIED DIMENSIONS ARE IN MILLIMETERS TOLERANCES ARE:		APPROVALS		DATE		Amphenol Canada Corp.			
DECIMALS X.X ± 0.15 X.XX ± 0.10		ANGLES ± 0.5°		DRAWN MIKE.H	MAR 10'11				
MATERIAL AND FINISH SEE NOTE		CHECKED X	X	DESIGNED JASON	MAR 10'11	SCALE 3:1		PROJECT P-U77-A111L-X081	
REF.		QA APPD X	X	E APPD X	X				
CODE IDENT NO.	03554	DWG APPD JASON	MAR 10'11	SCALE 3:1		PROJECT P-U77-A111L-X081		SHEET 3 OF 5	

- NOTES:
 1. DATUM AND BASIC DIMENSIONS ESTABLISHED BY CUSTOMER.
 2. PADS AND VIAS ARE CHASSIS GROUND.
 3. THRU-HOLES PLATING OPTIONAL.
 4. SEE DRAWING P-U76-A20-X00XX FOR CONNECTOR LAYOUT.

HOLE SIZES

- ⊘ $\phi 1.55$
- $\phi 1.05$
- $\phi 0.95$
- ⊕ $\phi 0.85$

REVISIONS				
REV	ECN	DESCRIPTION	DATE	APPROVED
A		INITIAL RELEASE	MAR 10'11	JASON



RECOMMENDED PCB LAYOUT
 (BELLY TO BELLY CAGE MOUNTING)

DO NOT SCALE DRAWING

THIS DOCUMENT CONTAINS PROPRIETARY INFORMATION AND SUCH INFORMATION MAY NOT BE DISCLOSED TO OTHERS FOR ANY PURPOSE OR USED FOR MANUFACTURING PURPOSES WITHOUT PERMISSION FROM AMPHENOL CANADA CORP.

UNLESS OTHERWISE SPECIFIED DIMENSIONS ARE IN MILLIMETERS TOLERANCES ARE: DECIMALS: X.X ± 0.15 X.XX ± 0.10 ANGLES: ± 0.5°	APPROVALS	DATE	Amphenol Canada Corp.		
	DRAWN: MIKE.H	MAR 10'11	TITLE		
MATERIAL AND FINISH	CHECKED: X	X	1X1 SFP CAGE		
SEE NOTE	QA APPD: X	X	SIZE: A3		
REF:	E APPD: X	X	DWG. NO: P-U77-A111L-X081	REV: A	
CODE IDENT. NO: 03554	DWG APPD: JASON	MAR 10'11	SCALE: 3:1	PROJECT:	SHEET: 5 OF 5

Mouser Electronics

Authorized Distributor

Click to View Pricing, Inventory, Delivery & Lifecycle Information:

[Amphenol:](#)

[U77-A111L-2081](#)