

THIS DRAWING IS UNPUBLISHED.

RELEASED FOR PUBLICATION

ALL RIGHTS RESERVED

© COPYRIGHT

By

LOC

DIST	
------	--

AD

00

REVISIONS

P	L
---	---

LIR

DESCRIPTION

DATE _____

DWN	
-----	--

	APVE
--	------

32

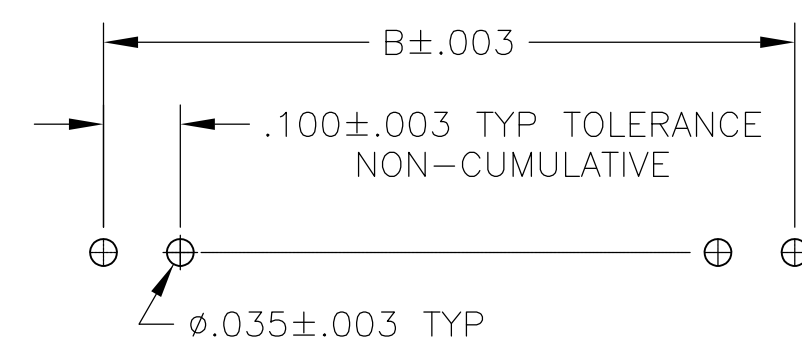
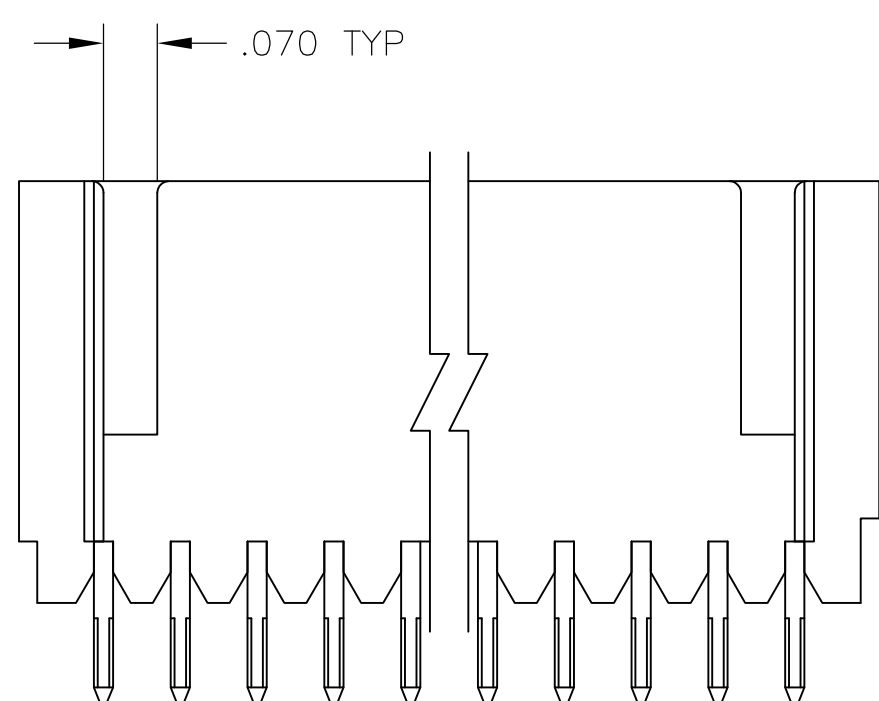
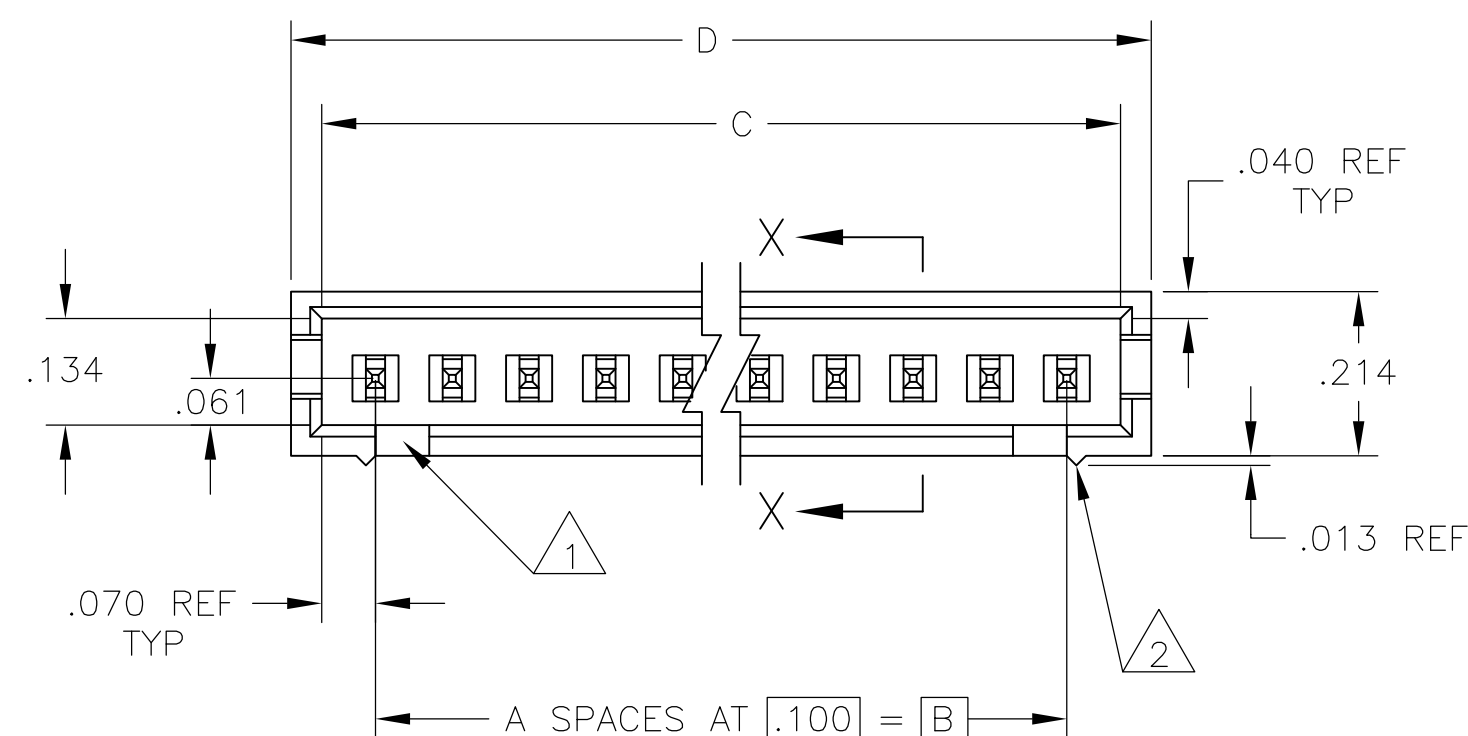
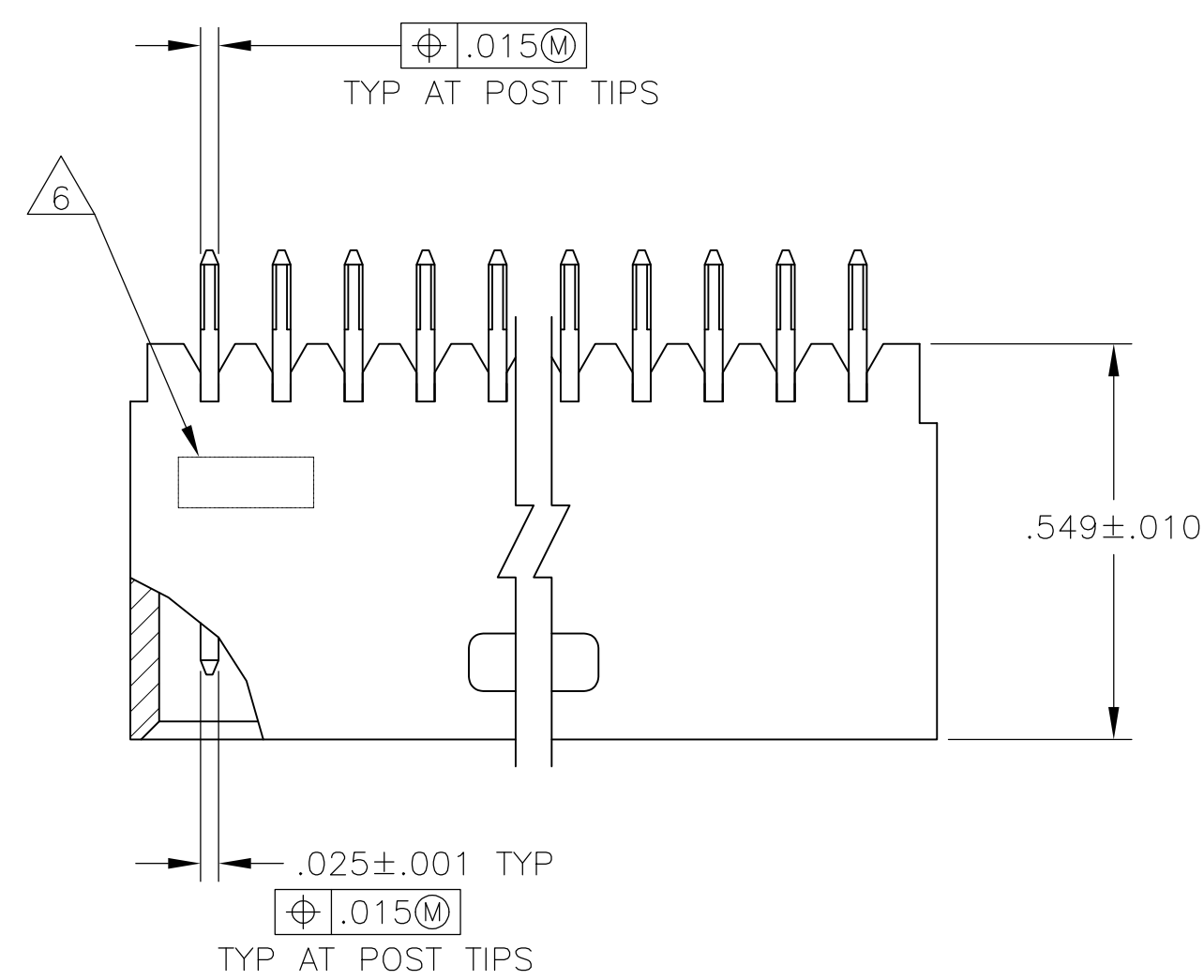
DD 805

50 550 500 44 004507

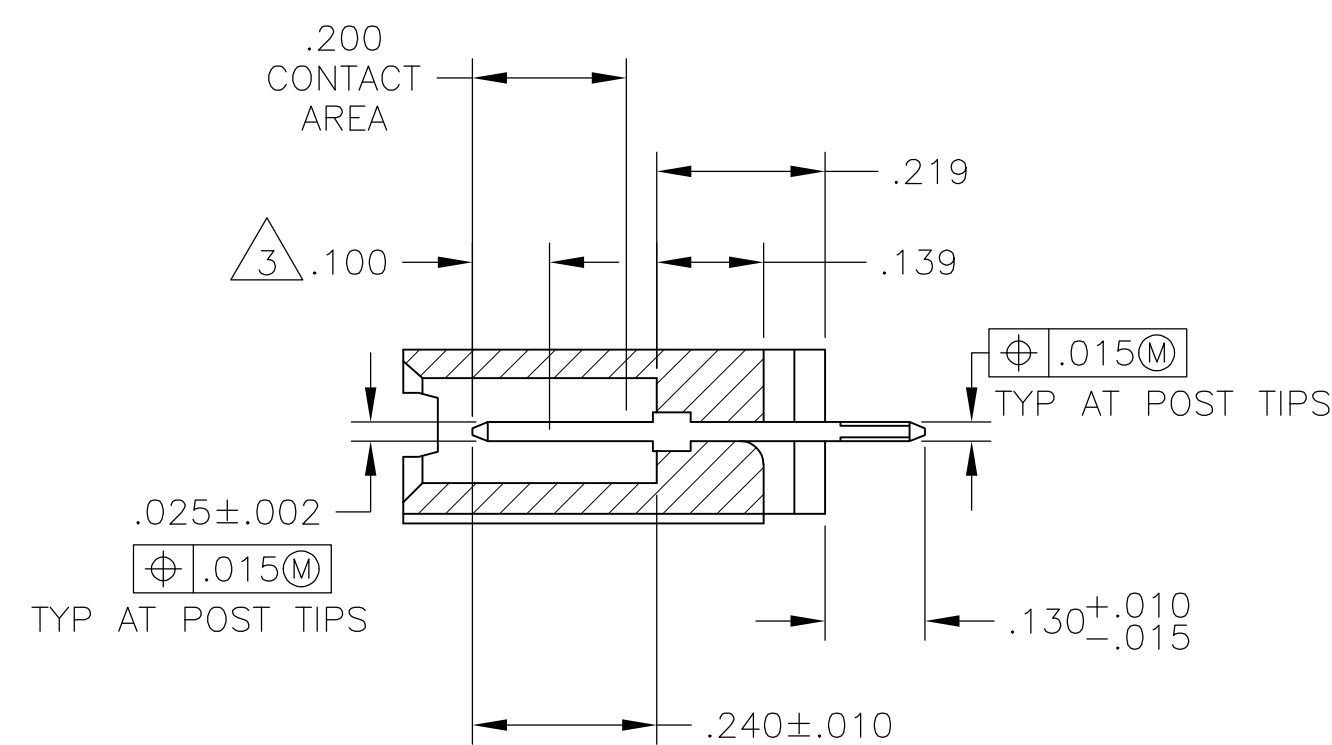
1.6 MAD

RIK	L
-----	---

	1.18
--	------



RECOMMENDED HOLE LAYOUT



SECTION X-X

-  FOR 3 POSITION ONLY (.215 WIDE).

2. STANDOFFS: UP TO 9 POS-(2 REQD) ON THE OUTSIDE ENDS OF THE HOUSING
10 TO 19 POS-(3 REQD) TWO ON THE OUTSIDE ENDS AND ONE CENTERED ON THE HOUSING
19 POS AND LARGER-(4 REQD) TWO ON THE OUTSIDE ENDS AND TWO SPACED EVENLY
WITHIN THE REMAINING LENGTH OF THE HOUSING.

-  POINT OF MEASUREMENT FOR PLATING THICKNESS.

- ④ .000030 GOLD ON THE CONTACT AREA, .000100—.000200 MATTE TIN-LEAD ON THE SOLDER TAIL, ALL OVER .000050 NICKEL.

- 5 OBSOLETE PART NUMBER




- 6 RECESSED DATE CODE

- 7 .000030 GOLD ON THE CONTACT AREA, .000100-.000200 MATTE TIN
ON THE SOLDER TAIL, ALL OVER .000050 NICKEL.

- 8 MATERIAL: HOUSING- FLAME RETARDANT THERMOPLASTIC, COLOR- BLACK.
POSTS- COPPER ALLOY

- 9 OBSOLETE PARTS: OBSOLETE CIS STREAMLINING PER D.RENAUD/D.SINISI

9	OBSOLETE	7	2.620	2.540	2.400	24	25	7-103414-3	
		7	2.520	2.440	2.300	23	24	7-103414-2	
9	OBSOLETE	7	2.420	2.340	2.200	22	23	7-103414-1	
		7	2.320	2.240	2.100	21	22	7-103414-0	
9	OBSOLETE	7	2.220	2.140	2.000	20	21	6-103414-9	
		7	2.120	2.040	1.900	19	20	6-103414-8	
9	OBSOLETE	7	2.020	1.940	1.800	18	19	6-103414-7	
		7	1.920	1.840	1.700	17	18	6-103414-6	
9	OBSOLETE	7	1.820	1.740	1.600	16	17	6-103414-5	
		7	1.720	1.640	1.500	15	16	6-103414-4	
9	OBSOLETE	7	1.620	1.540	1.400	14	15	6-103414-3	
		7	1.520	1.440	1.300	13	14	6-103414-2	
		7	1.420	1.340	1.200	12	13	6-103414-1	
		7	1.320	1.240	1.100	11	12	6-103414-0	
		7	1.220	1.140	1.000	10	11	5-103414-9	
		7	1.120	1.040	.900	9	10	5-103414-8	
		7	1.020	.940	.800	8	9	5-103414-7	
		7	.920	.840	.700	7	8	5-103414-6	
		7	.820	.740	.600	6	7	5-103414-5	
		7	.720	.640	.500	5	6	5-103414-4	
		7	.620	.540	.400	4	5	5-103414-3	
		7	.520	.440	.300	3	4	5-103414-2	
		7	.420	.340	.200	2	3	5-103414-1	
		OBSOLETE	4	3.720	3.640	3.500	35	36	3-103414-0
		OBSOLETE	4	3.620	3.540	3.400	34	35	3-103414-3
		OBSOLETE	4	3.520	3.440	3.300	33	34	3-103414-2
		OBSOLETE	4	3.420	3.340	3.200	32	33	3-103414-1
		OBSOLETE	4	3.320	3.240	3.100	31	32	3-103414-0
		OBSOLETE	4	3.220	3.140	3.000	30	31	2-103414-9
		OBSOLETE	4	3.120	3.040	2.900	29	30	2-103414-8
		OBSOLETE	4	3.020	2.940	2.800	28	29	2-103414-7
		OBSOLETE	4	2.920	2.840	2.700	27	28	2-103414-6
OBSOLETE	4	2.820	2.740	2.600	26	27	2-103414-5		
OBSOLETE	4	2.720	2.640	2.500	25	26	2-103414-4		
9	OBSOLETE	4	2.620	2.540	2.400	24	25	2-103414-3	
		4	2.520	2.440	2.300	23	24	2-103414-2	
9	OBSOLETE	4	2.420	2.340	2.200	22	23	2-103414-1	
		4	2.320	2.240	2.100	21	22	2-103414-0	
9	OBSOLETE	4	2.220	2.140	2.000	20	21	1-103414-9	
		4	2.120	2.040	1.900	19	20	1-103414-8	
9	OBSOLETE	4	2.020	1.940	1.800	18	19	1-103414-7	
		4	1.920	1.840	1.700	17	18	1-103414-6	
9	OBSOLETE	4	1.820	1.740	1.600	16	17	1-103414-5	
		4	1.720	1.640	1.500	15	16	1-103414-4	
BY 6-103414-1		4	1.620	1.540	1.400	14	15	1-103414-3	
		4	1.520	1.440	1.300	13	14	1-103414-2	
		4	1.420	1.340	1.200	12	13	1-103414-1	
		4	1.320	1.240	1.100	11	12	1-103414-0	
		4	1.220	1.140	1.000	10	11	103414-9	
		4	1.120	1.040	.900	9	10	103414-8	
		4	1.020	.940	.800	8	9	103414-7	
		4	.920	.840	.700	7	8	103414-6	
		4	.820	.740	.600	6	7	103414-5	
		4	.720	.640	.500	5	6	103414-4	
		4	.620	.540	.400	4	5	103414-3	
		4	.520	.440	.300	3	4	103414-2	
		4	.420	.340	.200	2	3	103414-1	

THIS DRAWING IS A CONTROLLED DOCUMENT.		DWN: R. BROWN 28JAN05 QWK: J. GESFORD 28JAN05 J. GESFORD 28JAN05		 TE Connectivity	
DIMENSIONS: INCHES 		TOLERANCES UNLESS OTHERWISE SPECIFIED: 0. PLC ± — 1. PLC ± — 2. PLC ± .005 3. PLC ± — 4. PLC ± — ANGLES FINISH SEE TABLE		NAME ASSEMBLY, MOD II, HEADER, SINGLE ROW .100 C/L, (4) SIDED SHROUD	
MATERIAL 		PRODUCT SPEC — APPLICATION SPEC —		SIZE CASE CODE DRAWING NO RESTRICTED ? A1 00779 C=103414 —	
		WEIGHT — CUSTOMER DRAWING		SCALE 4:1 SHEET 1 OF 1 REV P2	

Mouser Electronics

Authorized Distributor

Click to View Pricing, Inventory, Delivery & Lifecycle Information:

[TE Connectivity:](#)

[1-103414-2](#)