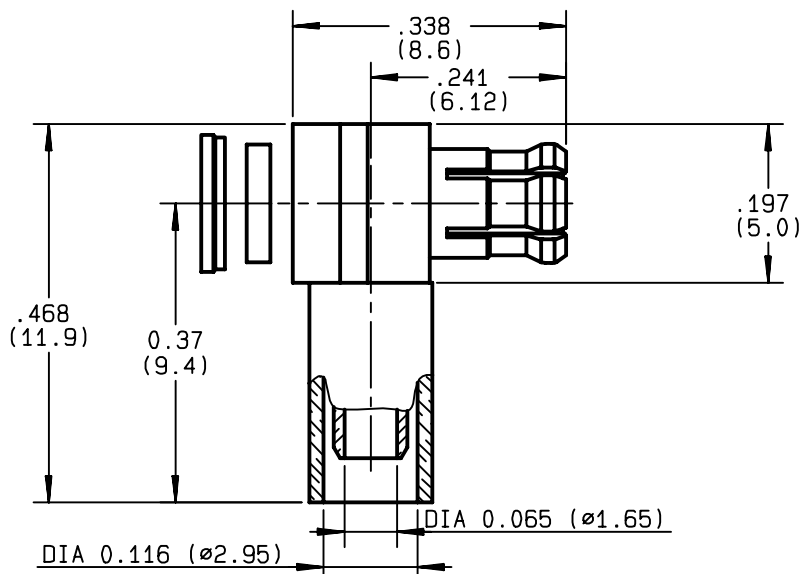


**RIGHT ANGLE PLUG CRIMP TYPE**  
**CABLE 2.6/50 S**
**R113.182.000**  
**SERIES MCX**


NOMINAL IMPEDANCE	<b>50</b>	$\Omega$
FREQUENCY RANGE	<b>0-6</b>	GHz
TEMPERATURE RATING	<b>-55/+155</b>	$^{\circ}\text{C}$
V.S.W.R	<b>1.10 + .075</b>	$\times F(\text{GHz})\text{Maxi}$
RF INSERTION LOSS	<b>0.5</b>	$\sqrt{F}(\text{GHz}) \text{ dB Maxi}$
VOLTAGE RATING	<b>170</b>	$V_{\text{eff}} \text{ Maxi}$
DIELECTRIC WITHSTANDING VOLTAGE	<b>500</b>	$V_{\text{eff}} \text{ Mini}$
INSULATION RESISTANCE	<b>1000</b>	$M\Omega \text{ Mini}$
HERMETIC SEAL	<b>NA</b>	$\text{Atm.cm}^3/\text{s}$
LEAKAGE (pressurized only)	<b>NA</b>	
MECHANICAL DURABILITY	<b>500</b>	Cycles
WEIGHT	<b>.7</b>	gr
SPECIFICATION		

**CABLES : KX 22A**  
**RG 188**  
**RG 316**

## OTHERS CHARACTERISTICS

CABLE RETENTION	<b>53</b>	N Mini
CENTER CONTACT RETENTION		
Axial force - mating end	<b>10</b>	N Mini
Axial force - opposite end	<b>10</b>	N Mini
Torque	<b>NA</b>	cm.N Mini
RECOMMENDED TORQUES		
Mating	<b>NA</b>	cm.N
Panel nut	<b>NA</b>	cm.N
Clamp nut	<b>NA</b>	cm.N

CONNECTOR PARTS	MATERIALS	FINISH	(all values are given ) in micrometers
BODY	BRASS	GOLD 0.2 OVER NICKEL 2	
OUTER CONTACT	BERYLLIUM COPPER	GOLD 0.5 OVER NICKEL 2	
CENTER CONTACT	BRASS	GOLD 1.3 OVER NICKEL 2	
INSULATOR	PTFE	-	
GASKET		-	
OTHERS PIECES			

BAFFERT

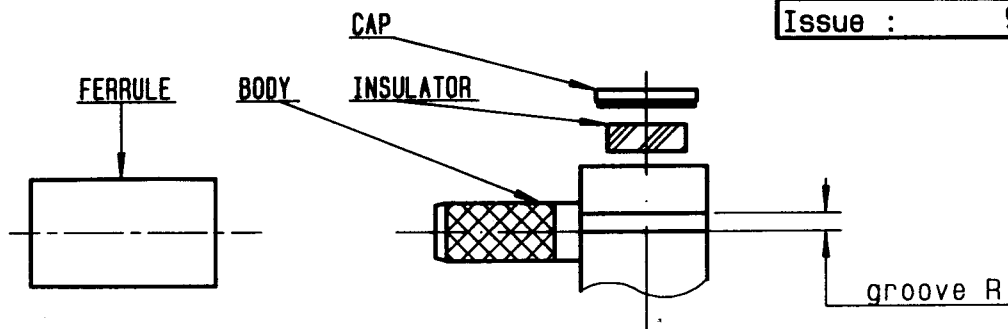
**ISSUE**  
**9925G00**
**CREATION DATE**  
**30/08/1988**

FILE PART-NUMBER


**RADIALL**®

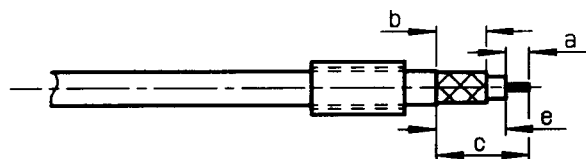
The information given here is subject to change without notice.  
 Design changes may be in order to improve the product .

*Connect to the future*



①

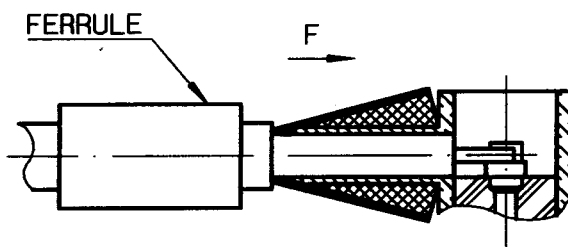
Slide onto the cable the ferrule .  
Strip the cable .  
Tin cable inner conductor .  
-



Stripping	a	b	c	d	e
inch	0.079	0.197	0.315	0	0.236
mm	2	5	8	-	6

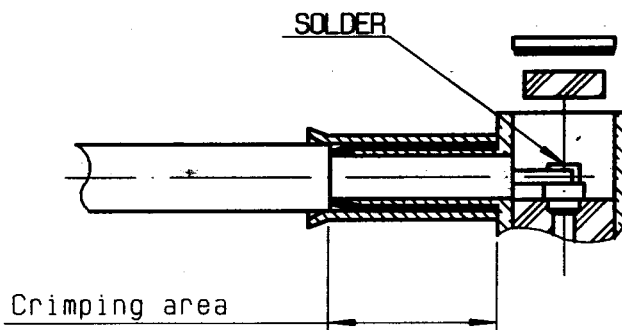
②

Fan the braid .  
Push connector body under the braid .  
Slide the ferrule on the braid  
( in direction F )  
-  
-  
-  
-  
-



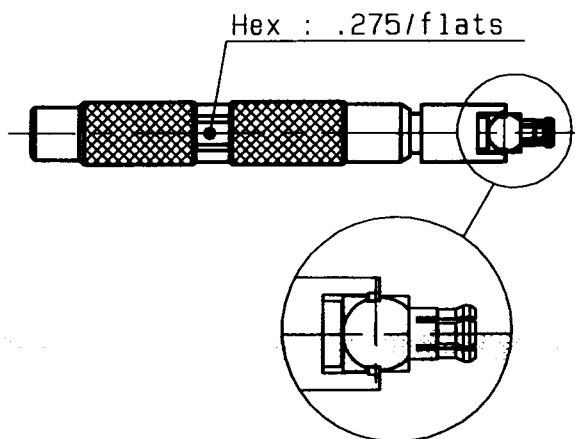
③

Crimp the ferrule with crimping tool  
R282 271 000 ( Hex. : .128) or crimping  
tool R 282 293 000 ( M22520/5-01 ) .  
+ dies R 282 235 003 ( M22520/5-03 )  
Solder inner conductor .  
Introduce the insulator into the body .  
Press fit the cap .



④

Slide mounting tool R282 868 onto the  
body grooves .  
Press fit the cap turning tool handle  
with adapted wrench .275(AF) (cap in  
the same plan than square face) .  
-  
-  
-  
-  
-



# Mouser Electronics

Authorized Distributor

Click to View Pricing, Inventory, Delivery & Lifecycle Information:

Radial:

[R113182000W](#)