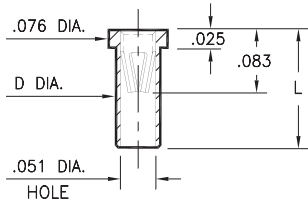


# PIN RECEPTACLES

FOR .025" - .037" DIAMETER PINS AND .025" SQUARE PINS

## 0305

**0305-X-15-XX-47-XX-10-0**  
Solder mount in .059/.061 mounting hole  
Also available on 8mm or 24mm wide carrier tape: See chart for details  
See page 194.9 for Tape & Reel details



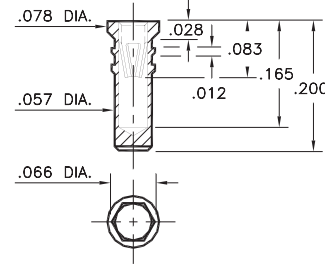
Basic Part Number	Length L	Dia. D
0305-0	.095	.056
0305-1	.105	.058
0305-2	.155	.058

### T&R Packaging

Basic Part Number	Tape Width	Parts per 13" Reel
0305-0	8mm	6,000
0305-1	8mm	6,000
0305-2	24mm	1,500

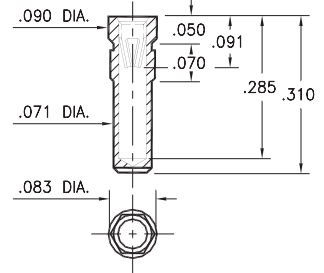
## 0279

**0279-0-15-XX-47-XX-10-0**  
Hex press-fit in .062 plated through-hole



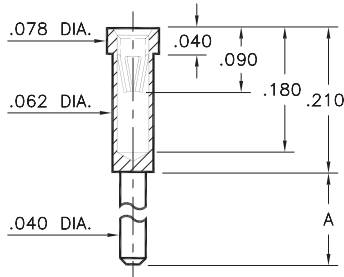
## 0330

**0330-0-15-XX-47-XX-10-0**  
Hex press-fit in .079 plated through-hole



## 0300/8300

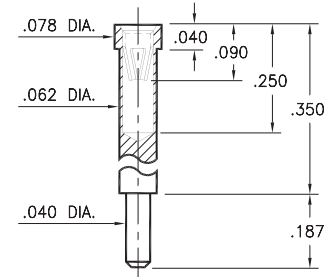
**X300-X-15-XX-47-XX-10-0**  
Solder mount in .042 min. mounting hole



Basic Part Number	Length A
0300-1	.110
0300-2	.187
8300-0	.140

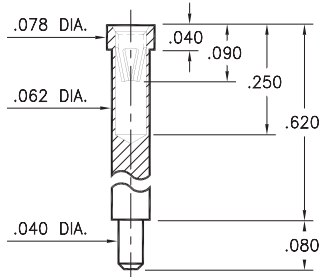
## 0301

**0301-1-15-XX-47-XX-10-0**  
Solder mount in .042 min. mounting hole



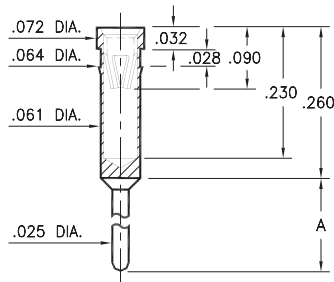
## 0309

**0309-2-15-XX-47-XX-10-0**  
Solder mount in .042 min. mounting hole



## 0399

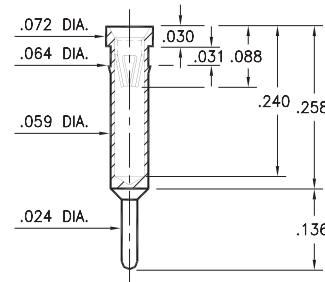
**0399-X-15-XX-47-XX-04-0**  
Press-fit in .062 mounting hole



Basic Part Number	Length A
0399-0	.230
0399-1	.180

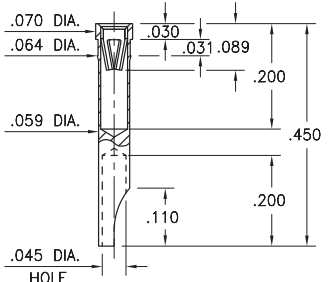
## 1304

**1304-0-15-XX-47-XX-04-0**  
Press-fit in .061 mounting hole



## 1134

**1134-0-18-15-47-27-10-0**  
Press-fit in .061 mounting hole



### SPECIFICATIONS:

**Shell Material:** Brass Alloy 360, 1/2 Hard  
**Contact Material:** Beryllium Copper Alloy 172, HT  
**Dimensions: Inches**  
**Tolerances On:** Lengths: ±.005  
Diameters: ±.002  
Angles: ± 2°



ORDER CODE: **XXXX - X - XX - XX - 47 - XX - XX - 0**

BASIC PART #

SPECIFY SHELL FINISH:

- 01 200 μ" TIN/LEAD OVER NICKEL
- ◆ 80 200 μ" TIN OVER NICKEL (RoHS)
- ◆ 15 10 μ" GOLD OVER NICKEL (RoHS)

SPECIFY CONTACT FINISH:

- 01 200 μ" TIN/LEAD OVER NICKEL
- ◆ 80 200 μ" TIN OVER NICKEL (RoHS)
- ◆ 27 30 μ" GOLD OVER NICKEL (RoHS)

SELECT CONTACT:

#47 CONTACT (DATA ON PAGE 256)

(For alternate contact choices, see group D on page 248)



# Mouser Electronics

Authorized Distributor

Click to View Pricing, Inventory, Delivery & Lifecycle Information:

## Mill-Max:

[0305-2-15-80-47-80-10-0](#) [0305-2-15-80-47-27-10-0](#) [0300-1-15-15-47-27-10-0](#) [0279-0-15-15-47-27-10-0](#) [1304-0-15-01-47-27-04-0](#) [0300-2-15-15-47-27-10-0](#) [0305-2-15-01-47-27-10-0](#) [0305-2-15-15-47-27-10-0](#) [0305-1-15-15-47-27-10-0](#) [1304-0-15-01-47-01-04-0](#) [0300-1-15-01-47-27-10-0](#) [0301-1-15-15-47-27-10-0](#) [0279-0-15-01-47-27-10-0](#) [0300-2-15-01-47-27-10-0](#) [0305-0-15-01-47-27-10-0](#) [0399-1-15-01-47-01-04-0](#) [0399-1-15-01-47-27-04-0](#) [0399-0-15-01-47-01-04-0](#) [0399-0-15-01-47-27-04-0](#) [0330-0-15-01-47-01-10-0](#) [0330-0-15-01-47-27-10-0](#) [0309-2-15-01-47-01-10-0](#) [0309-2-15-01-47-27-10-0](#) [0305-2-15-01-47-01-10-0](#) [0305-1-15-01-47-01-10-0](#) [0305-1-15-01-47-27-10-0](#) [0305-0-15-01-47-01-10-0](#) [0301-1-15-01-47-01-10-0](#) [0301-1-15-01-47-27-10-0](#) [0300-2-15-01-47-01-10-0](#) [0300-1-15-01-47-01-10-0](#) [0279-0-15-01-47-01-10-0](#) [0305-0-15-15-47-27-10-0](#) [0309-2-15-15-47-27-10-0](#) [0330-0-15-15-47-27-10-0](#) [0399-1-15-15-47-27-04-0](#) [1304-0-15-15-47-27-04-0](#) [0305-0-15-15-47-14-10-0](#) [8300-0-15-00-00-00-04-0](#) [0279-0-15-00-00-00-10-0](#) [1304-0-15-80-47-27-04-4](#) [0300-1-15-00-00-00-10-0](#) [0399-1-15-00-00-00-04-0](#) [0300-2-15-00-00-00-10-0](#) [1304-0-15-00-00-00-04-0](#) [0330-0-15-00-00-00-10-0](#) [1304-0-15-01-47-27-04-4](#) [0399-0-15-00-00-00-04-0](#) [1304-0-15-00-00-00-04-4](#) [0305-1-15-00-00-00-10-0](#) [0309-2-15-00-00-00-10-0](#) [1134-0-18-15-47-27-10-0](#) [0300-1-15-01-47-14-10-0](#) [0330-0-15-80-47-14-10-0](#) [1304-0-15-01-47-14-04-0](#) [0399-0-15-01-47-14-04-0](#) [0309-2-15-01-47-14-10-0](#) [0305-2-15-01-47-14-10-0](#) [0399-1-15-80-47-14-04-0](#) [0305-2-15-80-47-14-10-0](#) [0279-0-15-01-47-14-10-0](#) [1304-0-15-80-47-14-04-0](#) [0330-0-15-01-47-14-10-0](#) [0300-2-15-80-47-14-10-0](#) [0309-2-15-80-47-14-10-0](#) [0399-0-15-80-47-14-04-0](#) [0300-1-15-80-47-14-10-0](#) [0305-1-15-80-47-14-10-0](#) [0279-0-15-80-47-14-10-0](#) [0305-1-15-01-47-14-10-0](#) [0399-1-15-01-47-14-04-0](#) [0301-1-15-80-47-14-10-0](#) [0300-2-15-01-47-14-10-0](#) [0305-0-15-01-47-14-10-0](#) [8300-0-15-01-47-14-04-0](#) [8300-0-15-80-47-14-04-0](#)