

LOC		DIST		REVISIONS					
GP		00		P	LTR	DESCRIPTION	DATE	DWN	APVD
					A	NEW RELEASE	05APR2007	RG	PD

1. PART NUMBER CHANGES AND OR DESIGN CHANGES AFFECTING ITEM INTERCHANGEABILITY REQUIRE PRIOR TYCO APPROVAL AND AUTHORIZATION BY REVISION TO THIS DRAWING.
2. MATERIAL:

INSULATORS - THERMOPLASTIC, GLASS REINFORCED, COLOR: BLACK
UL94V-0 FLAMMABILITY RATED.
POWER CONTACTS - PHOSPHOR BRONZE ALLOY,
COPPER ALLOY
COMPLIANT SIGNAL PIN-PHOSOHOR BRONZE
CROWN BAND-BERYLLIUM COPPER ALLOY
GUIDE PIN-TELLURIUM COPPER
3. FINISH:

CONTACTS - GOLD PLATE 0.76µm MIN. THK., OVER NICKEL
1.27µm MIN. THK
SOLDER TAILS, TIN 1.02µm MIN. THK. OVER NICKEL
1.27µm MIN THK.
GUIDE PIN - SILVER PLATE 5.08µm MIN THK. OVER NICKEL 1.27µm MIN THK.

△4 ACTIVE GUIDE PIN ACCEPT M3 SCREWS, (USER SUPPLIED)

5. CONTACT TYCO FOR RECOMMENDED PRESS TOOL DRAWING, FIX00229,

△6 ITEMS PROVIDED TO THIS SPECIFICATION TO BE PERMANENTLY IDENTIFIED PER THE FOLLOWING IDENTIFIER LABEL

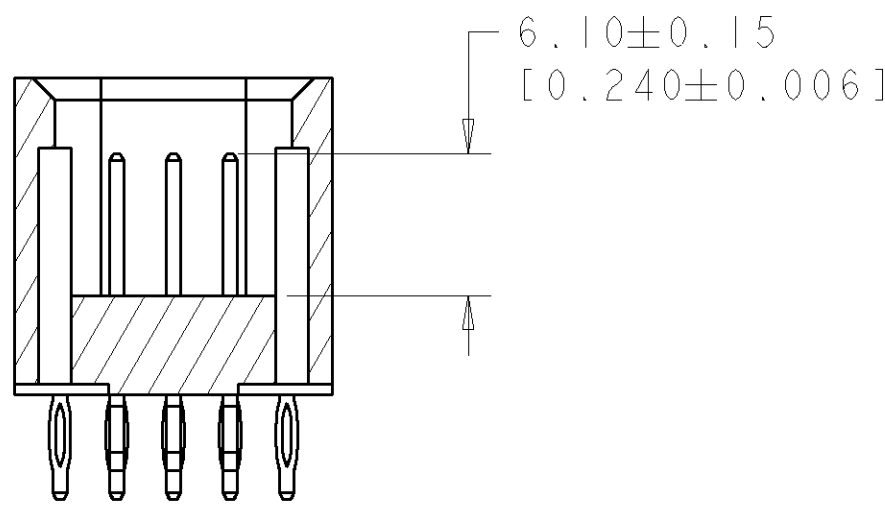
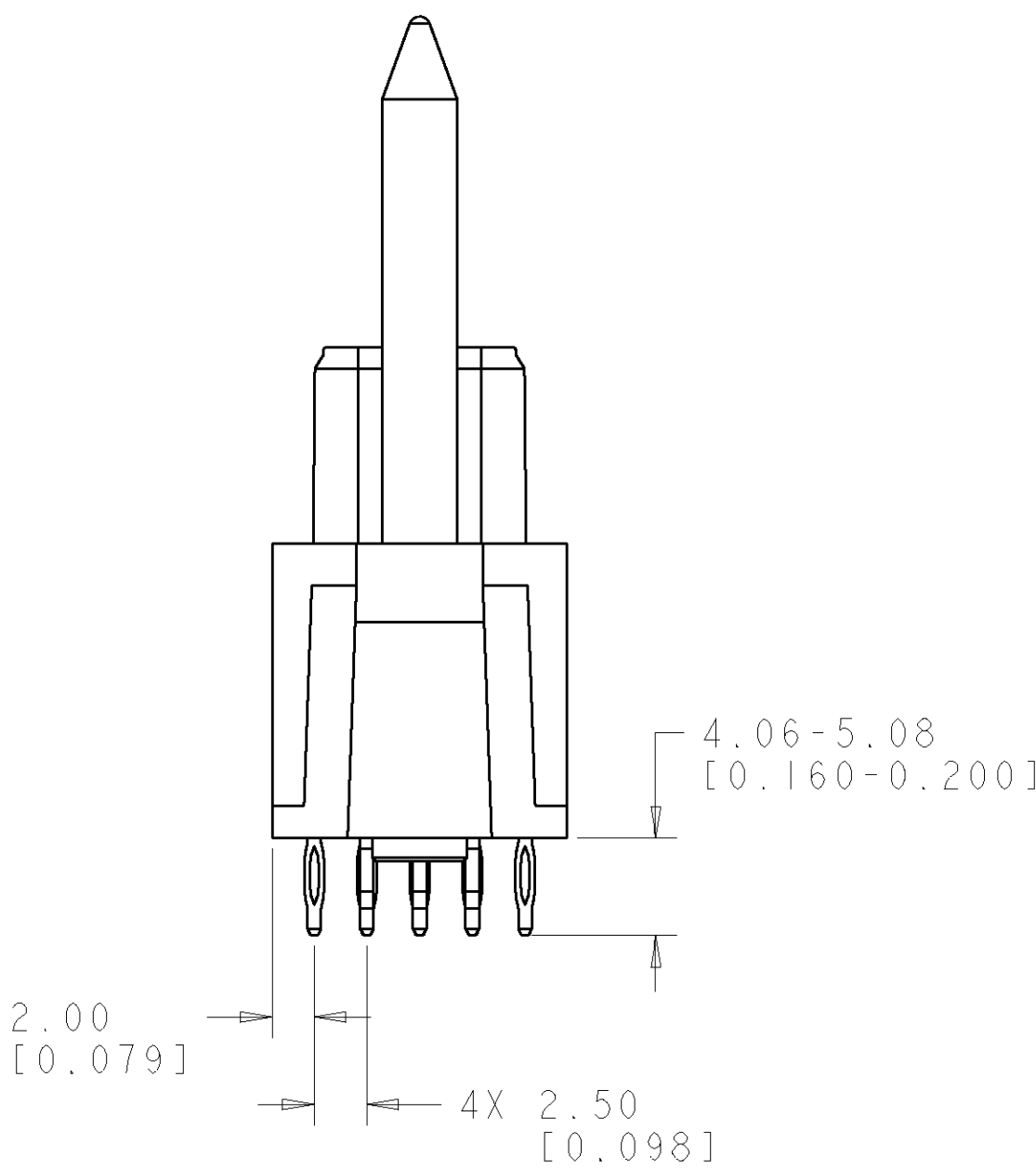
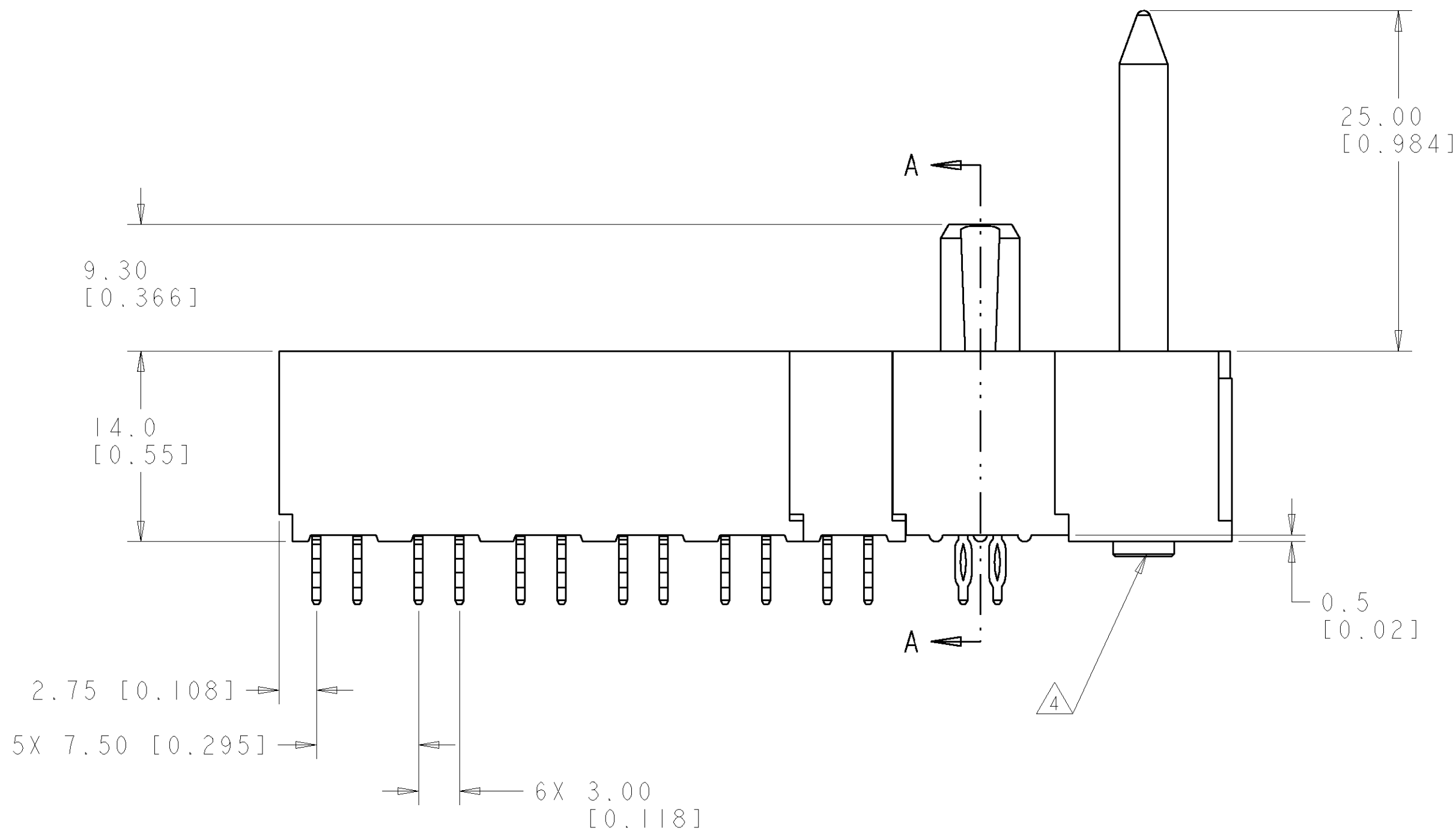
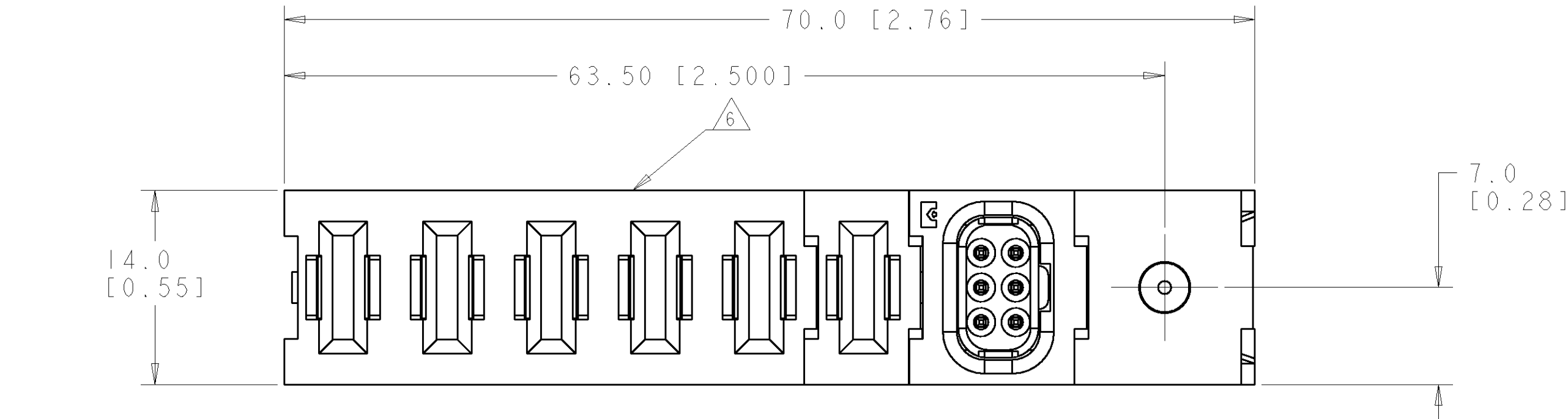
TYCO PART NO.

XXXXXXX-X

DATE CODE (e.g. 0106)

XXXX

YEARWEEK



SECTION A-A

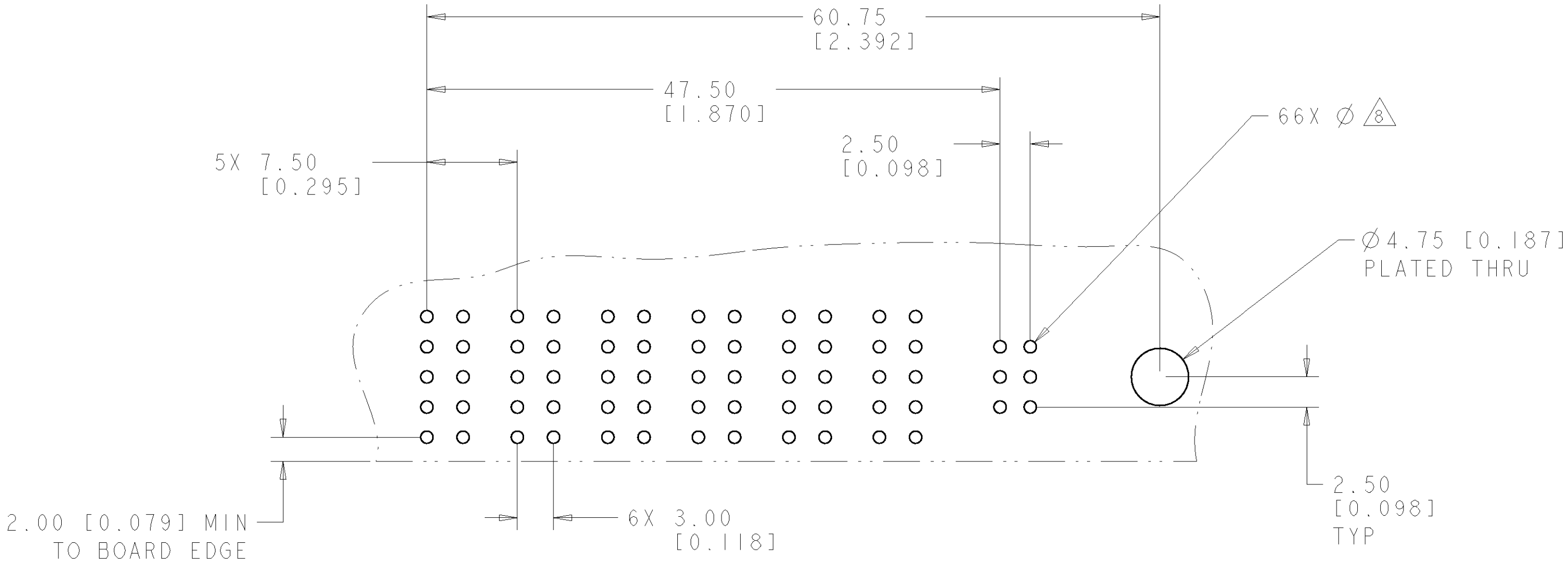
ELCON

FLATPAQ

DIMENSIONS:		TOLERANCES UNLESS OTHERWISE SPECIFIED:		DWN		05APR2007		R. GRZYBOWSKI	
mm		0 PLC ±.25 (1.010)		CHK		05APR2007		P. DAMATO	
2 PLC ±.5 (1.020)		3 PLC ±.25 (1.010)		APVD		05APR2007		S. FLICKINGER	
4 PLC ±.25 (1.010)		5 PLC ±.25 (1.010)		PRODUCT SPEC		-		APPLICATION SPEC	
6 PLC ±.25 (1.010)		7 PLC ±.25 (1.010)		WEIGHT		-		CUSTOMER DRAWING	
MATERIAL		FINISH		SCALE		3:1		SHEET 1 OF 3	
-		-		REV		A		-	

AS SHOWN		6646507-1	
DESCRIPTION		PART NUMBER	
tyco Electronics		Tyco Electronics Harrisburg, PA 17105-3608	
NAME SOCKET CONNECTOR, STRAIGHT COMPLIANT TAIL FLATPAQ			
SIZE	CAGE CODE	DRAWING NO	RESTRICTED TO
A	00779	C=6646507	-
SCALE		3:1	SHEET 1 OF 3
			REV A

LOC	DIST	REVISIONS					
GP	00	P	LTR	DESCRIPTION	DATE	DWN	APVD
		-	-	SEE SHEET 1	-	-	-



PRINTED CIRCUIT LAYOUT
COMPONENT SIDE

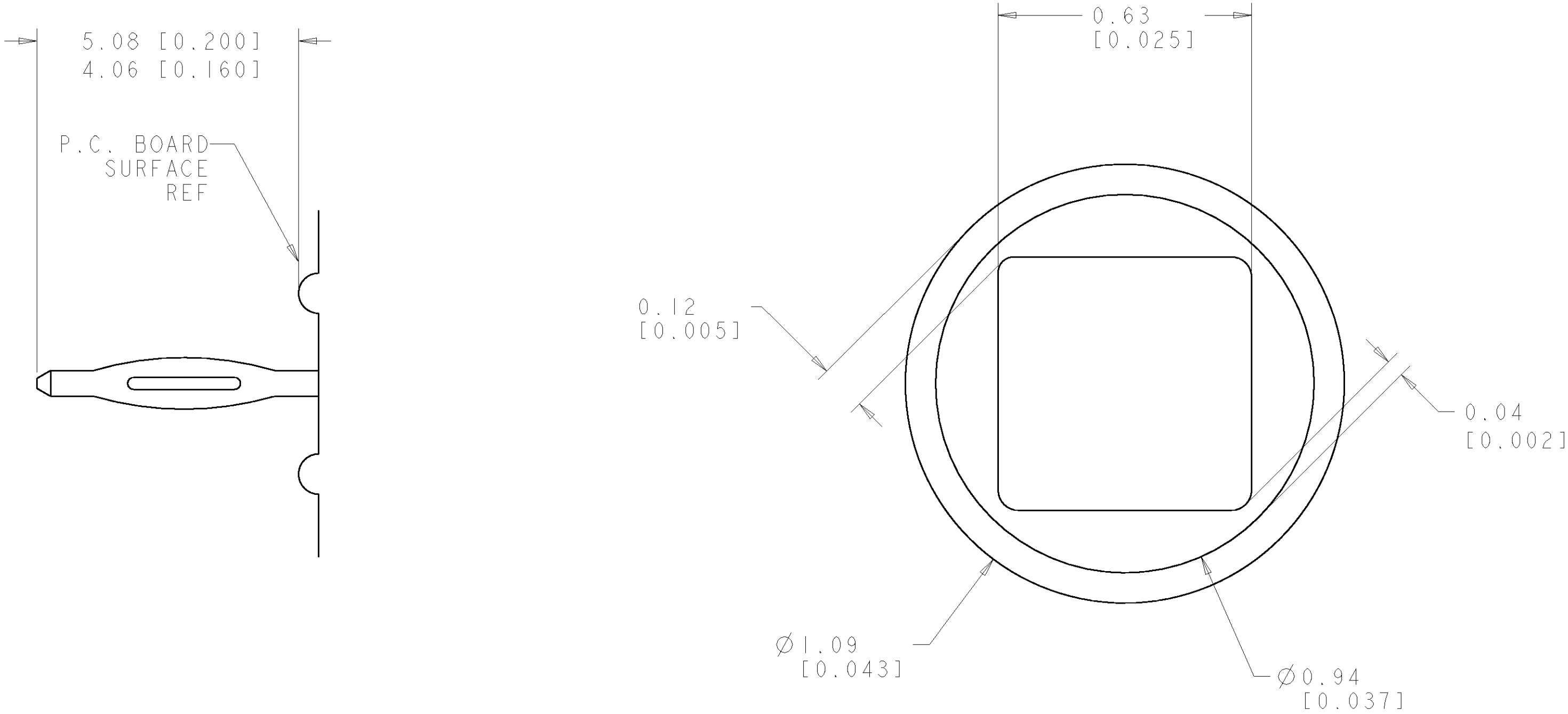
CONNECTOR	CATALOG MODULE #	QTY	SIZE NO.	CONTACT QTY	MATING PIN	MAX. CURRENT (PER CONTACT)	CONTACT SPACING	VOLTAGE RATING
SOCKET	FP200	6	8	12	1.25 X 7.00 [.049 X .276]	35 amps	7.50 [.2953]	250 VOLTS
	FP413	1	22	6	.64 [.025] SQ.	3 amps	2.50 [.0984]	125 VOLTS
	FP515	1	ACTIVE STRAIGHT GUIDE PIN					

ELCON

FLATPAQ

DIMENSIONS:				TOLERANCES UNLESS OTHERWISE SPECIFIED:				DWN R.GRZYBOWSKI 05APR2007		tyco Electronics Tyco Electronics Harrisburg, PA 17105-3608	
mm				0 PLC ±.5 [.020] 2 PLC ±.5 [.020] 3 PLC ±.25 [.010] 4 PLC ±.5 ANGLES ±5				CHK P.DAMATO 05APR2007		NAME SOCKET CONNECTOR, STRAIGHT COMPLIANT TAIL FLATPAQ	
				APVD S.FLICKINGER 05APR2007							
MATERIAL				FINISH				PRODUCT SPEC		SIZE	
-				-				APPLICATION SPEC		CAGE CODE	
-				-				WEIGHT		DRAWING NO	
-				-				CUSTOMER DRAWING		RESTRICTED TO	
								A100779		C=6646507	
								SCALE		3:1	
								SHEET		2 OF 3	
								REV		A	

LOC	DIST	REVISIONS					
GP	00	P	LTR	DESCRIPTION	DATE	DWN	APVD
		-	-	SEE SHEET 1	-	-	-



7. COMPLIANT PIN DETAIL
SCALE 10 : 1
INSERTION/EXTRACTION FORCES
MAXIMUM PUSH IN: 133.3N PER PIN
[30 LBS]
MINIMUM PUSH OU: 44.4N PER PIN
[10 LBS]

8 SOLDER TERMNIATION AREA
SCALE 40:1
RECOMMENDED PRINTED CIRCUIT HOLE
COMPLIANT PRESS FIT
DRILLED HOLE: Ø1.15 [0.0453] ±.013 [0.0005]
COPPER PLATE: .025 [0.0010] TO .050 [0.0020]
TIN PLATE: .0005 [0.000020] MIN. (PER SURFACE)

Mouser Electronics

Authorized Distributor

Click to View Pricing, Inventory, Delivery & Lifecycle Information:

[TE Connectivity:](#)

[6646507-1](#)