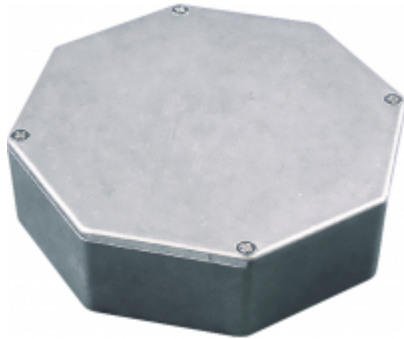




Quality Products. Service Excellence.

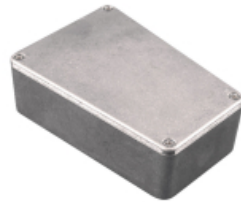
## Octagon & Trapezoid Diecast Aluminum Enclosures 1590TRP-STP Series

Unusual Shapes for a Unique Look

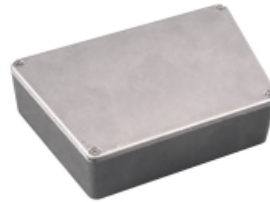


### Features

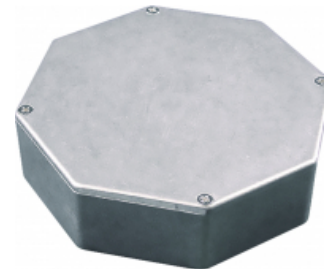
- Rugged, diecast aluminum alloy (tough - yet easy to machine), electronic instrument enclosure.
- Lap joint construction provides protection against access of dust and splashing water. Also provides for improved EMI/RFI shielding.
- Unpainted version is vibra finished for a smooth surface with no sharp edges.
- Our most popular application is "stomp box" usage - also available from stock - see our **1590 Stomp Box** series for more colors & traditional shapes.
- Four 6-32 x 1/2" machine screws secure lid - into factory tapped holes.
- Designed to meet IP54.
- Low side wall draft angle (2 degrees or less) for easy P.C. board mounting.
- Replacement screws for natural finish series, machine type, nickel plated, 6-32 x 1/2" - **1590MS100** - Package of 100
- Replacement screws for black series, 6-32 x 1/2" - **1590MS50BK** - Package of 50



1590TRPB "Short Trapezoid"



1590TRPC "Long Trapezoid"



1590STPC "Octagon"

### Standard Version

| Part No.<br>Unpainted | Part No.<br>Black | Length | Width     |           | Depth    |             |
|-----------------------|-------------------|--------|-----------|-----------|----------|-------------|
|                       |                   |        | Small End | Large End | With Lid | Without Lid |
| 1590TRPB              | 1590TRPBBK        | 4.41   | 2.42      | 3.11      | 1.54     | 1.38        |
| 1590TRPC              | 1590TRPCBK        | 3.74   | 4.79      | 5.95      | 1.54     | 1.38        |
| 1590STPC              | 1590STPCBK        | 5.23   | 5.23      | 5.23      | 1.54     | 1.38        |

### Water-Tight Version (Includes Gasket)

| Part No.<br>Unpainted | Part No.<br>Black | Length | Width     |           | Depth    |             |
|-----------------------|-------------------|--------|-----------|-----------|----------|-------------|
|                       |                   |        | Small End | Large End | With Lid | Without Lid |
| 1590WTRPB             | 1590WTRPBBK       | 4.41   | 2.42      | 3.11      | 1.54     | 1.38        |
| 1590WTRPC             | 1590WTRPCBK       | 3.74   | 4.79      | 5.95      | 1.54     | 1.38        |
| 1590WSTPC             | 1590WSTPCBK       | 5.23   | 5.23      | 5.23      | 1.54     | 1.38        |

Data subject to change without notice



# Mouser Electronics

Authorized Distributor

Click to View Pricing, Inventory, Delivery & Lifecycle Information:

[Hammond:](#)

[1590STPC](#) [1590STPCBK](#) [1590TRPB](#) [1590TRPBBK](#) [1590TRPC](#) [1590TRPCBK](#)