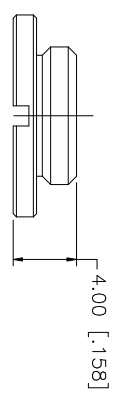
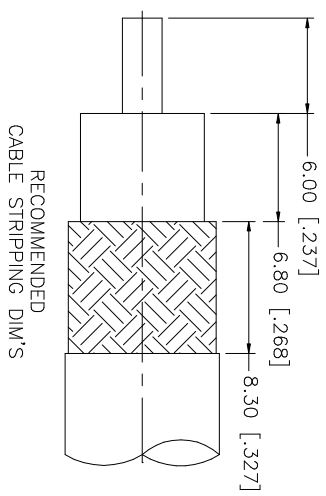
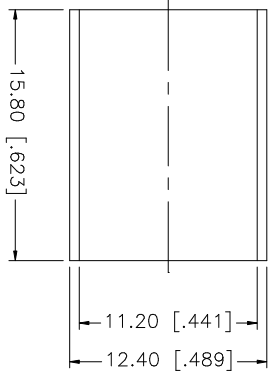
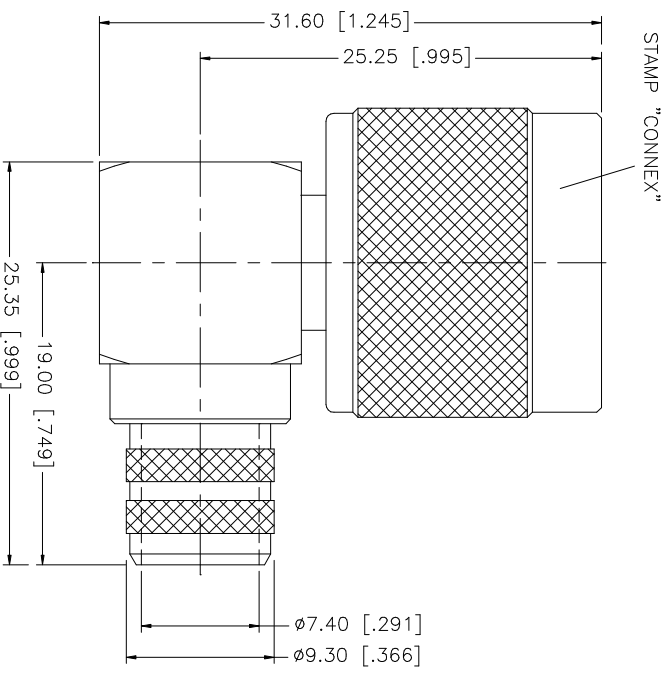


REV.	DATE	DESCRIPTION
NC	08/23/99	INITIAL RELEASE
A	06/01/04	UPDATE DRAWING FORMAT
B	04/30/06	ADD RG214/U DOUBLE BRAID CABLE



NOTE:
 1. CRIMPED FERRULE
 HEX CRIMP SIZE .429"
 2. CONTACT PIN TO SOLDER

DESCRIPTION	MATERIAL	FINISH	QTY	UNLESS OTHERWISE SPECIFIED DIMENSIONS ARE IN MILLIMETERS. DIMENSIONS IN [] ARE IN INCHES AND FOR CUSTOMER REFERENCE ONLY.	UNLESS OTHERWISE SPECIFIED TOLERANCES FOR MILLIMETERS ARE:	UNLESS OTHERWISE SPECIFIED TOLERANCES FOR INCHES ARE:	APPROVALS	DATE	PART DESCRIPTION	PART NO.	DWG. NO.	REV.	SIZE	SCALE
1	INSULATOR	TEFLON	1	1.180 - 4.724 = ± 0.020"	0.5 - 8mm ± 0.20mm	.020 - .315 = ± 0.007"	G.R.S.	04/30/06	N R/A CRIMP PLUG	172167	172167.DWG	B	A	NA
2	BODY/BARREL	BRASS	1	1.180 - 4.724 = ± 0.020"	8 - 30mm ± 0.40mm	.315 - 1.180 = ± 0.015"			RG214/U DOUBLE BRAID CABLE					
3	CONTACT PIN	BRASS	1	1.180 - 4.724 = ± 0.020"	30 - 120mm ± 0.50mm									
4	CLAMP NUT	BRASS	1	1.180 - 4.724 = ± 0.020"										
5	FERRULE	COPPER	1	1.180 - 4.724 = ± 0.020"										
6	CLAMP NUT	BRASS	1	1.180 - 4.724 = ± 0.020"										
7														
8														

Amphenol Connex

CAD FILE	DO NOT SCALE DRAWING
C:/172/172167.DWG	

Mouser Electronics

Authorized Distributor

Click to View Pricing, Inventory, Delivery & Lifecycle Information:

[Amphenol:](#)

[172167](#)