

Transfer or duplication of this document as well as the utilisation or communication of its content are not permitted unless express consent is granted. Violations give rise to claims for damages. All rights reserved in case of patent, utility model or design patent registrations.

Technical data

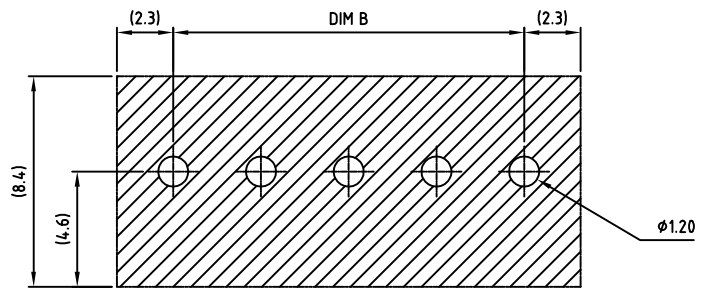
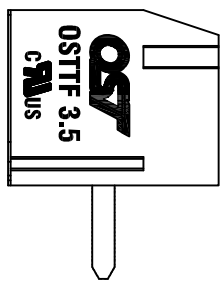
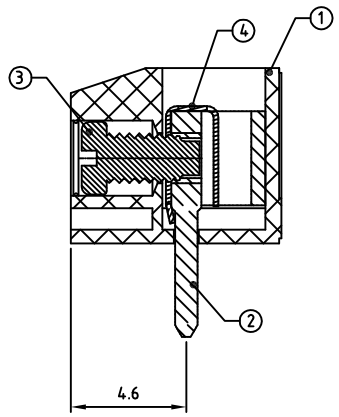
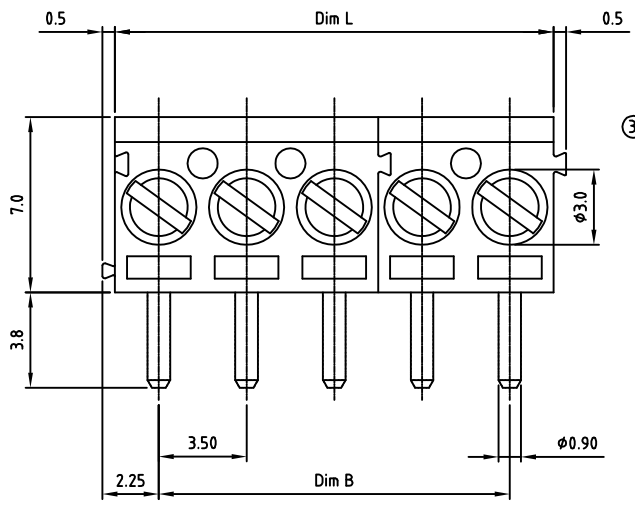
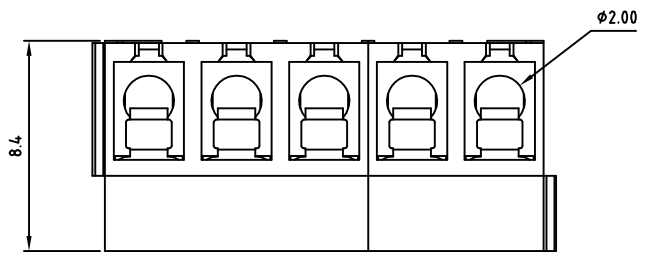
1. Nominal voltage: 300V/10A
PITCH: 3.5mm
2. Connection capacity:
AWG 26-16
3. Insulation Withstanding Voltage:
AC 1600V/MIN
4. Insulation Resistance:
1000MΩ or more at DC500V
5. Tightening torque:
2.0kgf.cm (0.2N.m)
6. Screw thread: M2
7. Stripping length: 5-6mm
8. Operating temperature range: -40°C - 115°C
Soldering temperature: 250±10°C/5s
9. Undimensioned Tolerances:

Dim.L=Px3.5		
Dim.B=(P-1)x3.5		
P= number of poles(2-24P)		
0-30mm	Dim B	Dim L
over 30mm-60mm	±0.10	±0.15
over 60mm-90mm	±0.15	±0.20
over 90mm	±0.20	±0.25
		±0.30

10. Safety approval:
11. RoHS Compliance

Part No.: **OSTTFXX0161**

No. of Poles	COLOR
02 2 Poles	0: Black
03 3 Poles	2: Red
...	3: Orange
24 24 Poles	4: Yellow
	5: Green
Nonstandard colors	6: Blue (Standard)
Mins could apply	8: Grey



PCB LAYOUT

SIGN	DESCRIPTION	CHK.	DATE

4	WIRE GUARD	Stainless steel		P
3	SCREW	STEEL	M2.0, Zn Plated	P
2	CAGE	BRASS	M2.0, Tin PLATED	P
1	BODY	PA66 UL94V-0	ALL COLOR	1
ITEM	NAME OF PART	MATERIAL	NOTES	Q'TY
DWG.	WF. Zhang	DATE	2016.10.08	UNITS: MM SHEET: 1 OF 1 Tolerance
CHK.	WF. Zhang	DATE	2016.10.08	SCALE: NONE 3:1 (:) REV.: A
APP.		DATE		X.X ±0.50 X.XX ±0.30 X* ±1.0
			TITLE: OSTTF Series 3.50mm "-" slot Screw 2-Interlock	
			PART NO. OSTTFXX0161	
			DWG NO. OSTTFXX0161.dwg	



ON-SHORE TECHNOLOGY, INC.