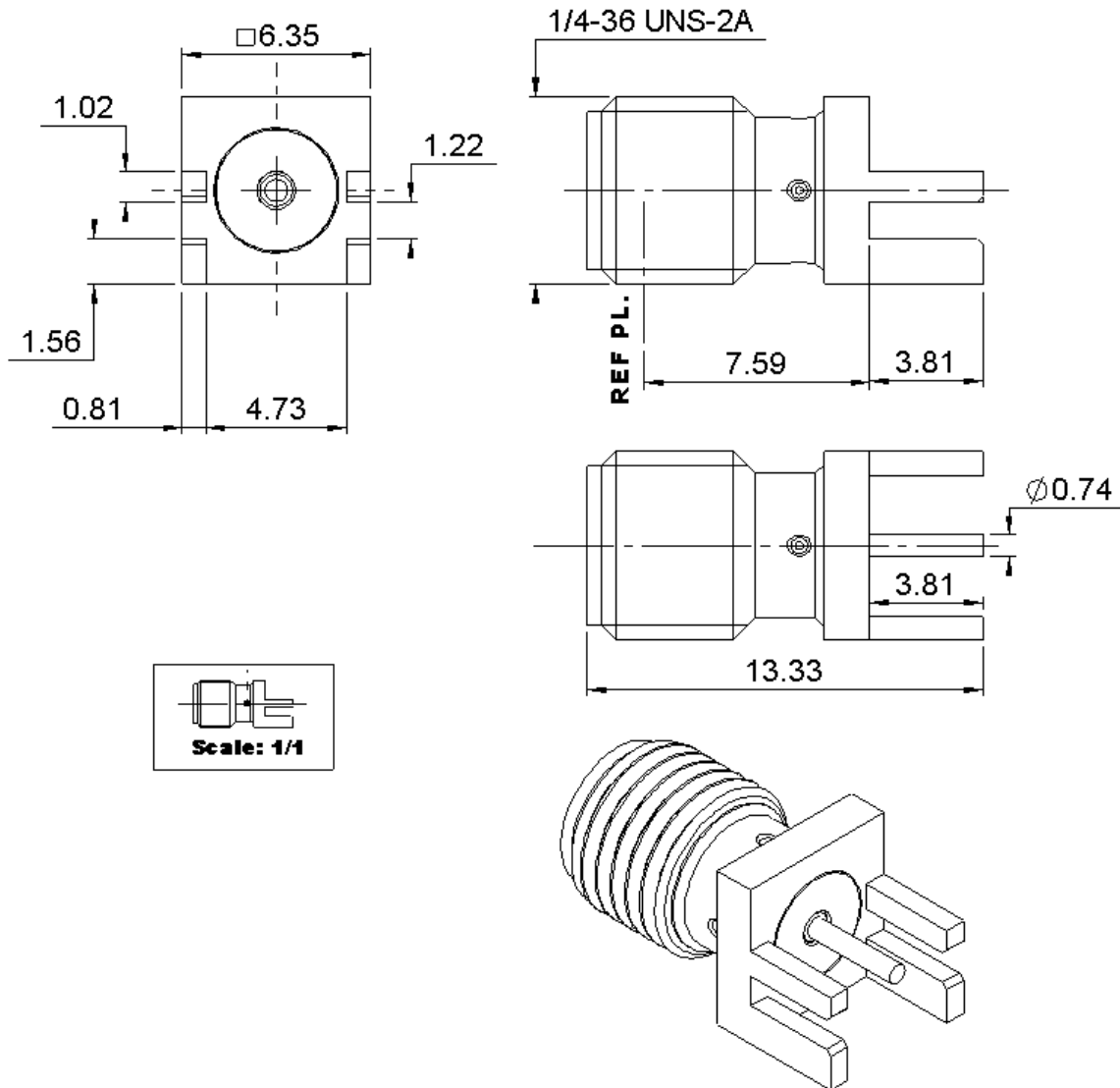


**FEMALE STRAIGHT RECEPTACLE FOR PCB**

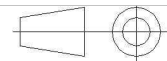
**SMT TYPE - EDGE CARD.**

**R125.423.200**

Series : SMA



All dimensions are in mm.



COMPONENTS	MATERIALS	PLATING ( $\mu\text{m}$ )
BODY	STAINLESS STEEL	GOLD 0.5 OVER NICKEL 2
CENTER CONTACT	BERYLLIUM COPPER	GOLD 1.3 OVER NICKEL 2
OUTER CONTACT	-	-
INSULATOR	PTFE	-
GASKET	-	-
OTHERS PARTS	-	-
-	-	-
-	-	-

**Issue : 1020 B**

In the effort to improve our products, we reserve the right to make changes judged to be necessary.

**RADIAL** 

**FEMALE STRAIGHT RECEPTACLE FOR PCB****R125.423.200****SMT TYPE - EDGE CARD.**

Series : SMA

**PACKAGING**

Standard	Unit	Other
<b>100</b>	<b>'W' option</b>	<b>Contact us</b>

**SPECIFICATION****ELECTRICAL CHARACTERISTICS**

Impedance	<b>50</b>	$\Omega$
Frequency	<b>0-18</b>	GHz
VSWR	<b>1.14 + 0,0000</b>	x F(GHz) Maxi
Insertion loss	<b>0.05</b>	$\sqrt{F}(\text{GHz})$ dB Maxi
RF leakage	- (	- F(GHz)) dB Maxi
Voltage rating	<b>500</b>	Veff Maxi
Dielectric withstanding voltage	<b>1000</b>	Veff mini
Insulation resistance	<b>5000</b>	M $\Omega$ mini

**ENVIRONMENTAL**

Operating temperature	<b>-65/+165</b>	$^{\circ}\text{C}$
Hermetic seal	<b>NA</b>	Atm.cm3/s
Panel leakage	<b>NA</b>	

**OTHER CHARACTERISTICS**

Assembly instruction

Others :

-

**MECHANICAL CHARACTERISTICS**

Center contact retention	
Axial force – Mating end	<b>27</b> N mini
Axial force – Opposite end	<b>27</b> N mini
Torque	<b>2.8</b> N.cm mini
Recommended torque	
Mating	<b>NA</b> N.cm
Panel nut	<b>NA</b> N.cm
Mating life	<b>500</b> Cycles mini
Weight	<b>1,3000</b> g

**Issue : 1020 B**

In the effort to improve our products, we reserve the right to make changes judged to be necessary.

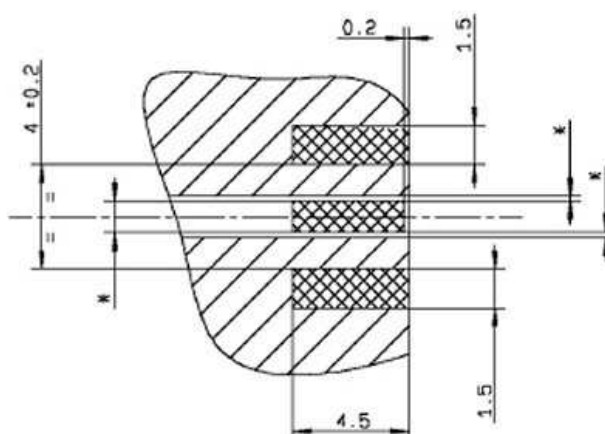
**RADIAL** 

# FEMALE STRAIGHT RECEPTACLE FOR PCB

## SMT TYPE - EDGE CARD.

# R125.423.200

Series : SMA



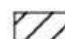
### COPLANAR LINE


Pattern and signal are on the same side.

The material of PCB is the epoxy resin of glass fabrics bacs. ( $\epsilon_r = 4.8$ )

The solder resist should be printed except for the land pattern on the PCB.

\*Parameters flagged by a star must be defined dimensionally regarding the thickness of the PCB and the transmission way these parameters could be measured by RADIAL if request.

 Pattern

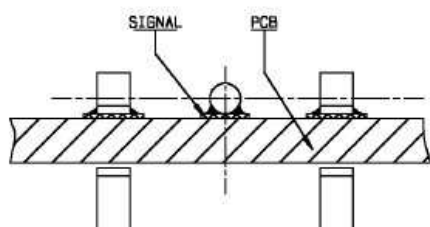
 Land for solder paste

1

This type of connector is adapted to one specific PCB thickness. It can be used with different ways of transmission.

### COPLANAR LINE

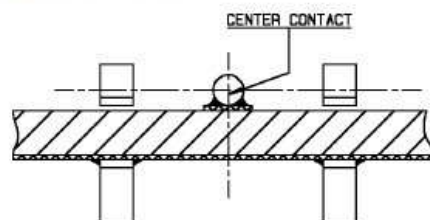
Signal and ground are coplanar.



2

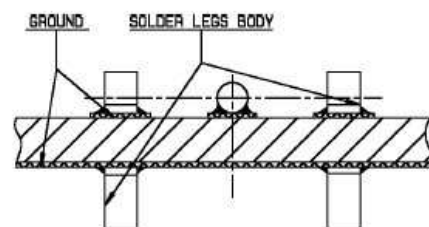
### MICROSTRIP LINE

Signal and ground are opposite.



3

Coplanar and opposite grounds.



Solution (3) features a stronger mechanical retention on the PCB because the 4 leads are soldered.

Issue : 1020 B

In the effort to improve our products, we reserve the right to make changes judged to be necessary.

**RADIAL** 

# Mouser Electronics

Authorized Distributor

Click to View Pricing, Inventory, Delivery & Lifecycle Information:

Radial:

[R125423200](#)