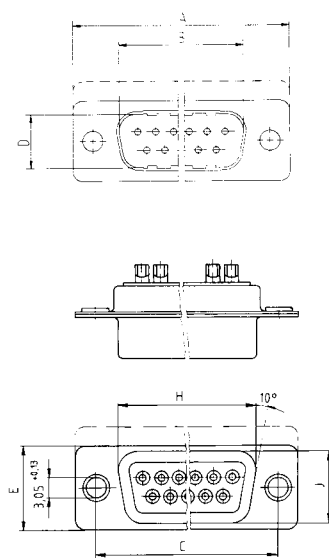


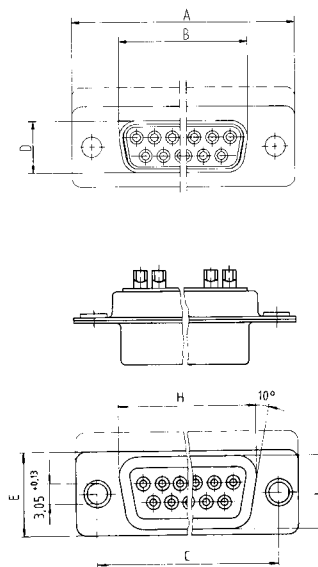
TMC with manual soldering termination

Dimensional drawings


Male connector





Female connector



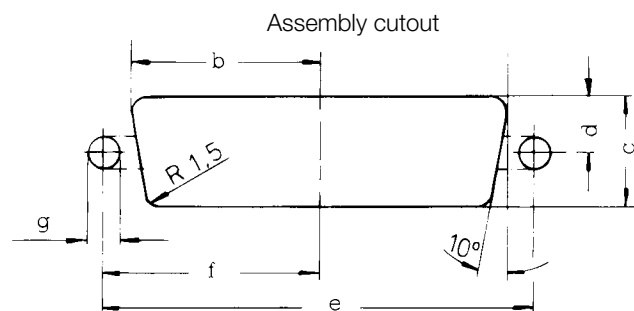
Ordering details

		Female connectors				
		TMC-S-....L (solder cup tinned)				
		Performance Level 207				
						
Number of pins		09	15	25	37	50
Standard		Standard version				
		004617	004620	004613	004926	004615

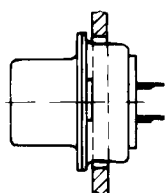
		TMC-P-....L (solder cup gold-plated)					TMC-S-....L (solder cup gold-plated)				
		Performance Level 207					Performance Level 207				
											
Number of pins		09	15	25	37	50	09	15	25	37	50
Standard		Standard version					Standard version				
		023127	023128	023129	023130	023131*	004125	013522	013635	004633	013844

Assembly details

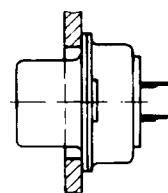
TMC with manual solder termination



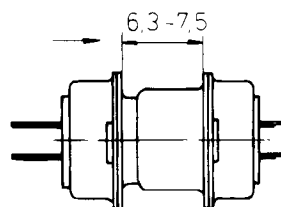
Front assembly



Rear assembly



Zone of reliable contact



Number of pins	Assembly	a ±0,13	b ±0,13	c ±0,13	d ±0,13	e ±0,1	f ±0,1	g ±0,1
9	Front	22,2	11,1	13,0	6,5	25	12,5	3,1
	Rear	20,5	10,25	11,4	5,7			
15	Front	30,5	15,25	13,0	6,5	33,3	16,65	3,1
	Rear	28,8	14,4	11,4	5,7			
25	Front	44,3	22,15	13,0	6,5	47	23,5	3,1
	Rear	42,5	21,25	11,4	5,7			
37	Front	60,7	30,35	13,0	6,5	63,5	31,75	3,1
	Rear	59,1	29,55	11,4	5,7			
50	Front	58,3	29,15	15,8	7,9	61,1	30,55	3,1
	Rear	56,3	28,15	14,1	7,05			

Mouser Electronics

Authorized Distributor

Click to View Pricing, Inventory, Delivery & Lifecycle Information:

[ERNI Electronics:](#)

[023131](#) [013844](#)