

DRAWING MADE IN THIRD ANGLE PROJECTION

3

2

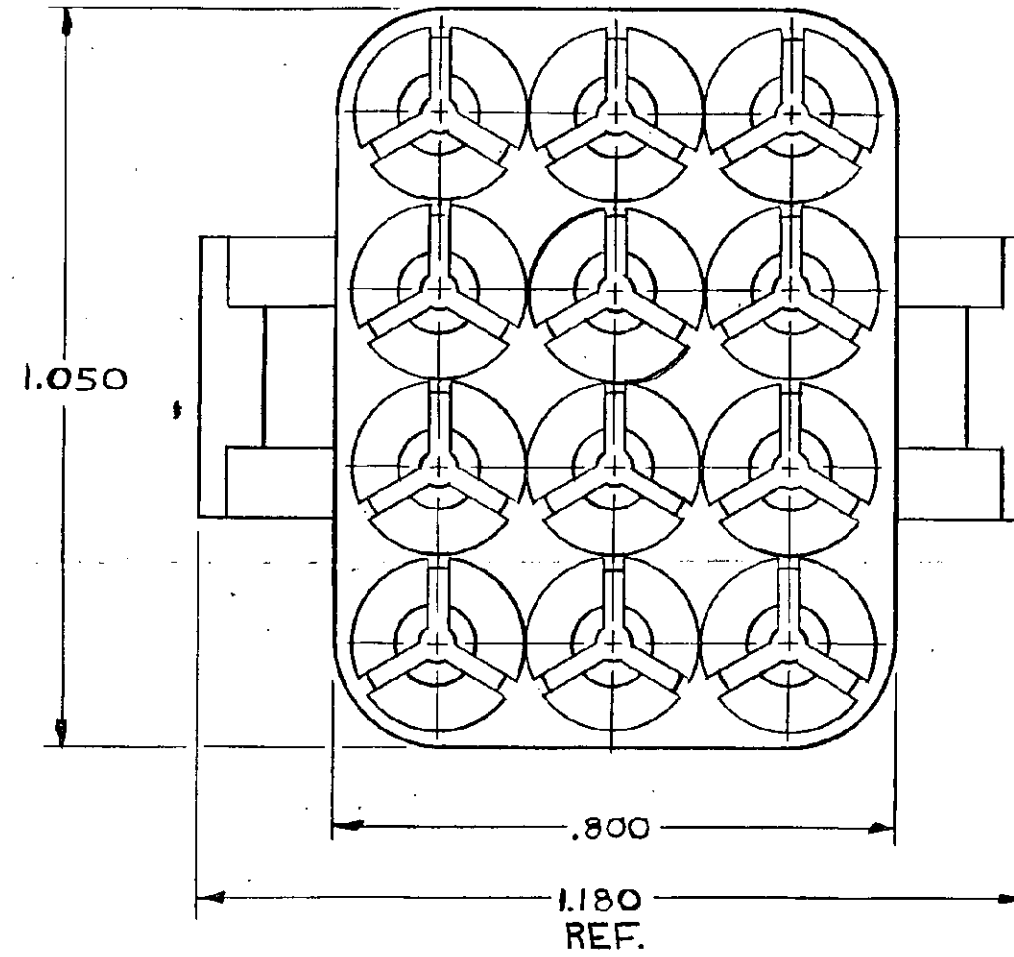
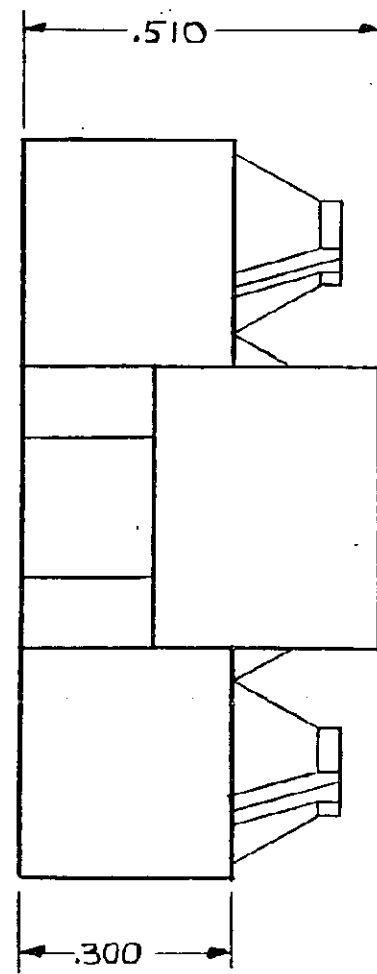
1

LOC CM DIST 53

THIS DRAWING IS UNPUBLISHED. RELEASED FOR PUBLICATION 19
 © COPYRIGHT 19 BY AMP INCORPORATED, HARRISBURG, PA. ALL INTERNATIONAL RIGHTS RESERVED. AMP PRODUCTS MAY BE COVERED BY U.S. AND FOREIGN PATENTS AND/OR PATENTS PENDING.

REVISIONS					
P	F	ZONE	LTR	DESCRIPTION	DATE APPROVED
✓	✓		G	REVISED PER ECR-13-012353	07AUG13 TM
✓	✓				
✓	✓				
✓	✓				
✓	✓				
✓	✓				
✓	✓				
✓	✓				

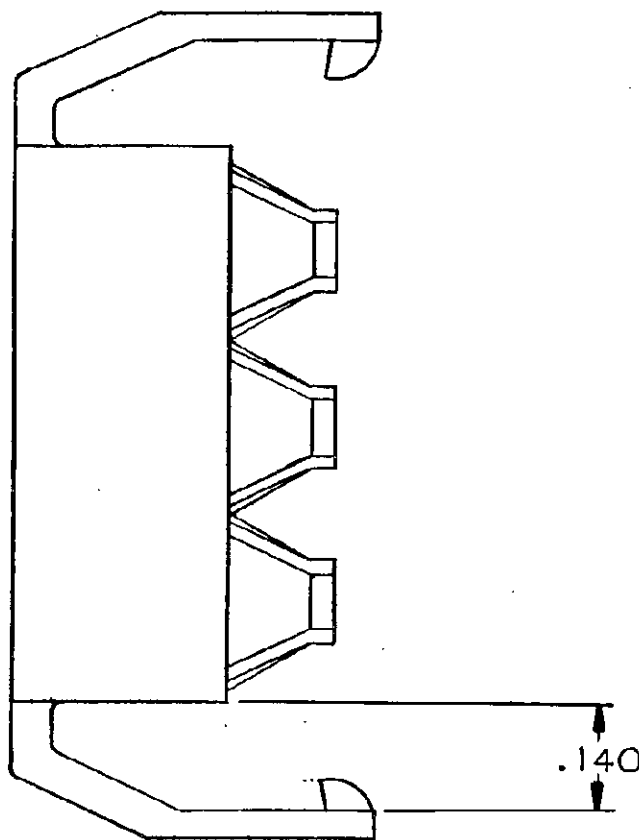
D



C

- ASSEMBLY INSTRUCTIONS:
 SNAP MODULE ONTO HOUSING,
 FULLY INSERT CONTACTS THRU MODULE AND INTO HOUSING (NOTE: SEVERAL CLICKS CAN BE HEARD AS THE CONTACT IS PUSHED IN PLACE),
 DISENGAGE LATCHES ON MODULE AND SLIDE BACK FROM END OF HOUSING,
 CHECK FOR ANY CONTACTS NOT FULLY INSERTED INTO HOUSING; INSERT ANY CONTACTS NOT LOCKED IN HOUSING,
 PUSH MODULE BACK AGAINST HOUSING UNTIL LATCHES ARE ENGAGED.
- MODULE WILL ACCEPT MAXIMUM WIRE OUTSIDE DIA OF .160.

B



A

UNLESS OTHERWISE SPECIFIED DIMENSIONS ARE IN INCHES. TOLERANCES ON: DECIMALS ±.015 ANGLES ±		CONTRACT NO		643255-1	
MATERIAL NYLON 94V-0		DR m. Fehor 7-15-82		PART NO	
FINISH		CHK C. High 7-22-82		NAME ASSEMBLY MODULE, UNIVERSAL MATE-N-LOK™, 12 CIRCUIT	
		APPD G. Scheller 26 82		SIZE C	
		DSGN APPD		FSCM NO 00779	
		OTHER APPD		DRAWING NO 643255	
				SCALE 4-1	
				SHEET	

Mouser Electronics

Authorized Distributor

Click to View Pricing, Inventory, Delivery & Lifecycle Information:

[TE Connectivity:](#)

[643255-1](#)