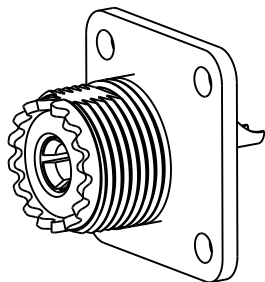
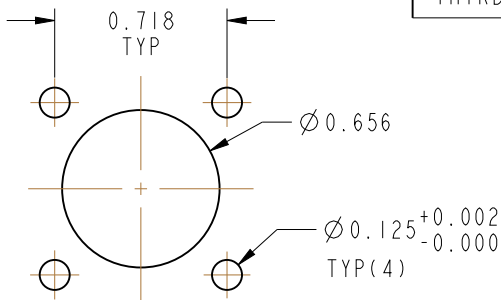


NOTES:

1. MATERIALS AND FINISHES:  
BODY - ZINC DIE CAST, NICKEL PLATING  
CONTACT - BRASS, SILVER PLATING  
INSULATOR - PTFE, NATURAL
2. MECHANICAL:  
A. DURABILITY: 500 CYCLES MIN.  
B. TEMPERATURE RANGE: -65° C TO +165° C
3. PACKAGING:  
A. QUANTITY: SINGLE PACK  
B. MARKING: BAG TO BE MARKED  
"AMPHENOL RF, 83-1R-RFX, AND DATE CODE"

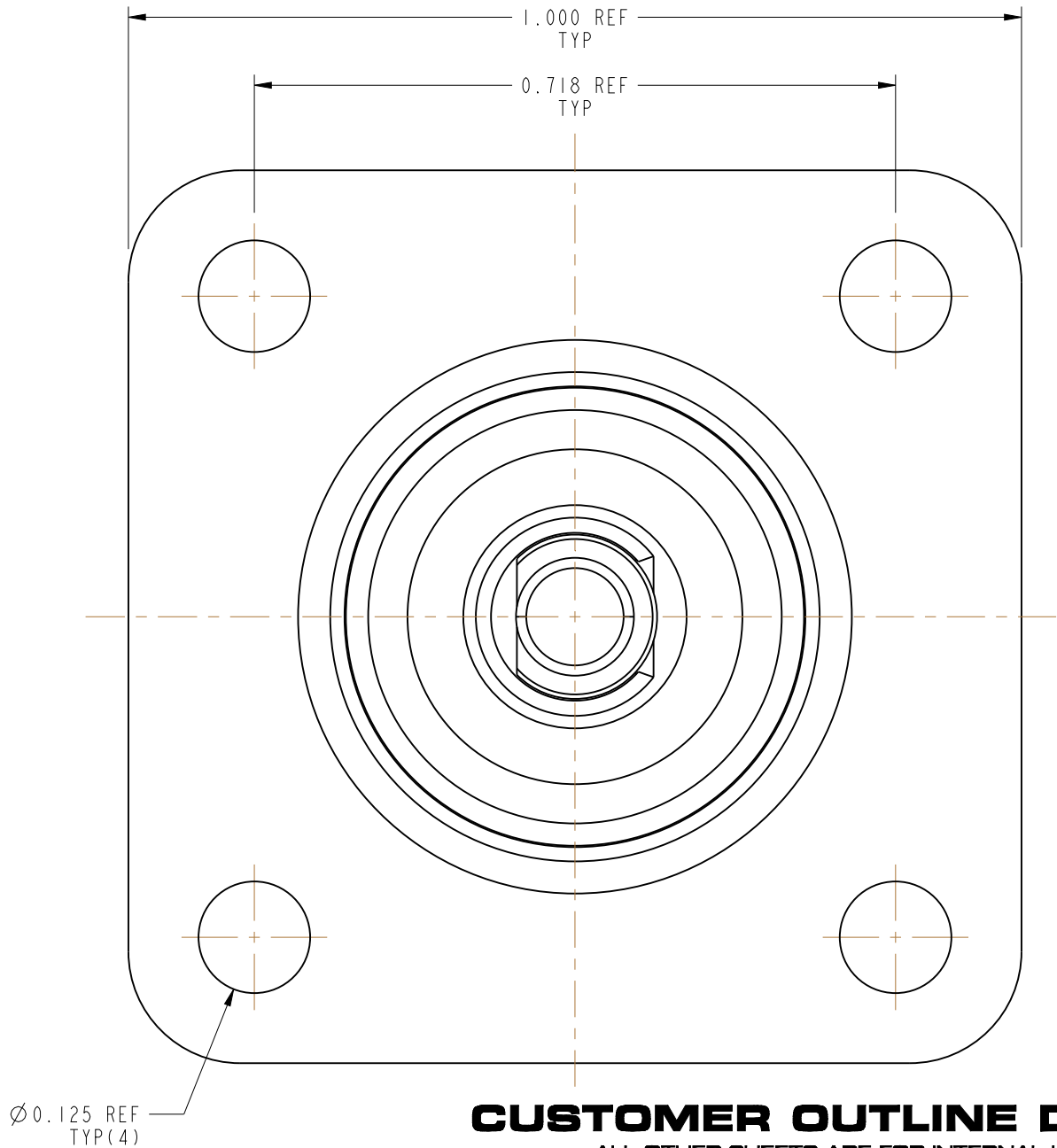
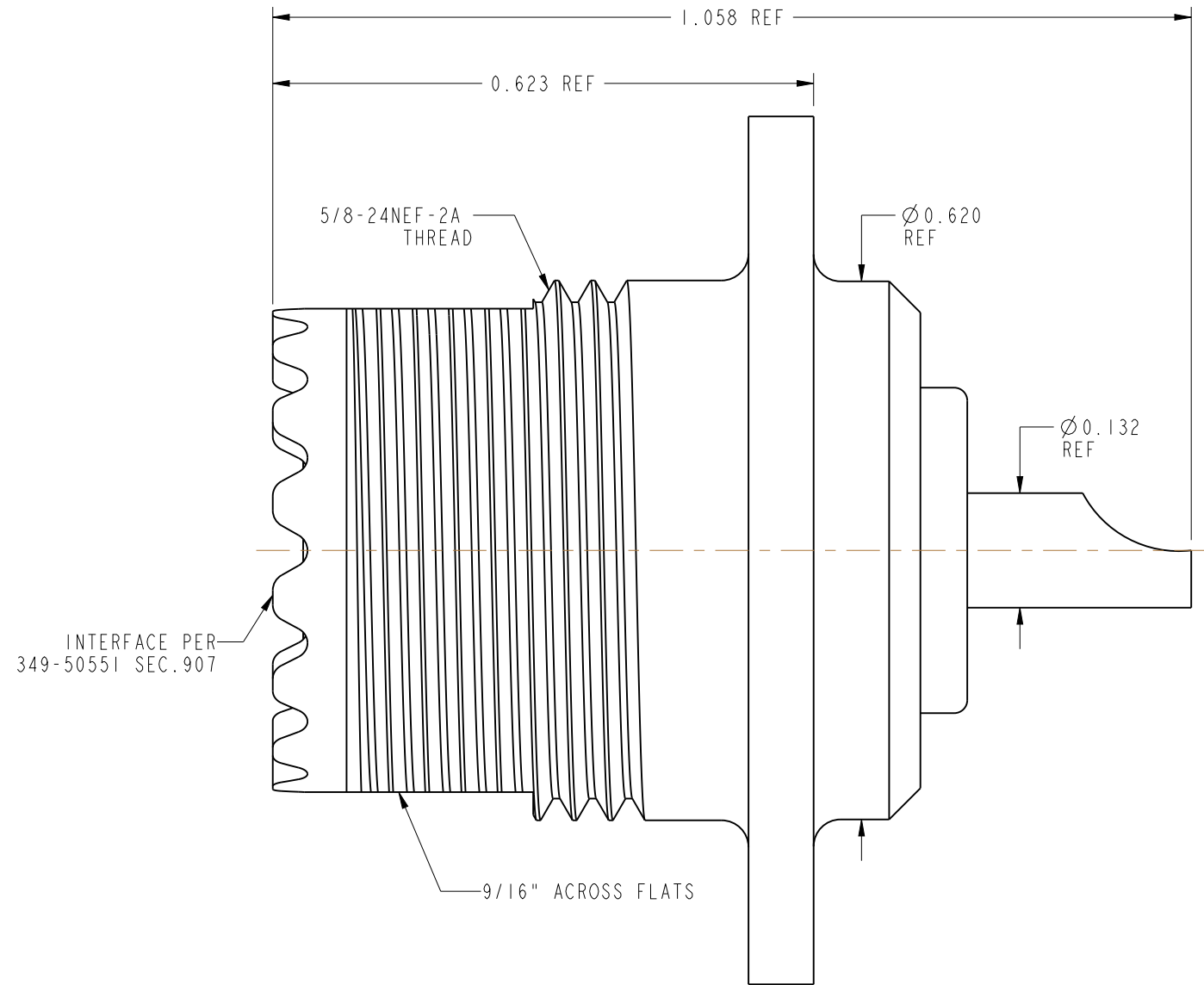
THIRD ANGLE PROJ. 

REVISIONS				
REV	DESCRIPTION	DATE	ECO	APPR
--	RELEASE TO MFG	--	--	--
F	REDRAWN IN PRO-E & COD SHEET ADDED	6/18/15	50333	NR



SCALE 1.250

## RECOMMENDED MOUNTING HOLE DIMENSIONS



# CUSTOMER OUTLINE DRAWING

ALL OTHER SHEETS ARE FOR INTERNAL USE ONLY

UNLESS OTHERWISE SPECIFIED, DIMENSIONS ARE IN INCHES AND TOLERANCES ARE: 2 PLACE DECIMAL      3 PLACE DECIMAL      ANGLES ±.015 (0,381 mm)      ±.005 (0,127 mm)      ± 1°  NOTICE - These drawings, specifications, or other data (1) are, and remain the property of Amphenol corp. (2) must be returned upon request; and (3) are confidential and not to be disclosed to any person other than those to whom they are given by Amphenol Corp. the furnishing of these drawings, specifications, or other data by Amphenol Corp., or to any other person to anyone for any purpose is not to be regarded by implication or otherwise in any manner licensing, granting rights to permitting such holder or any other person to manufacture, use or sell any product, process or design, patented or otherwise, that may in any way be related to or disclosed by said drawings, specifications, or other data.	MATERIAL	DRAWN	DATE	TITLE		Amphenol RF  www.amphenolrf.com
	SEE NOTES	RAJAGOPAL N	05-Jan-15	UHF STR JACK 4 HOLE FLANGE RECEPTACLE SO-239 TYPE SPECIAL NICKEL PLATED		
		ENGINEER	DATE			DRAWING NO.83-1R-RFX
		D.ROYCE	27-Apr-91			ITEM NO.83-1R-RFX
	REFERENCE	APPROVED	DATE	SCALE: 5.3:1.0		SHEET 2 OF 2
EAR # 962370-0	K. CAPOZZI	6/18/15	DWG SIZE		REV	
CONFIGURATION LEVEL: In Work	CAD FILE	B		F		
FINISH						

# Mouser Electronics

Authorized Distributor

Click to View Pricing, Inventory, Delivery & Lifecycle Information:

[Amphenol:](#)

[083-1R-RFX](#)