

FAA-PMA

B-430-1

REV. J

| REVISIONS | | | |
|-----------|---|----------|----------|
| REV. | DESCRIPTION | DATE | APPROVED |
| 6 | 33597 FIND NOS 10, 11 & 12 ADDED | 97/08/27 | RS |
| H | 35453 NOTE 5 ADDED | 98/05/04 | RS |
| J | 39517 "BOEING" ADDED TO VIB SPEC, SHOCK, & CONNECTOR P/N, .87 MIN ADDED | 99/05/11 | RS |

CONSTRUCTION GASKET SEALED (VENTED)

MAIN CONTACT CONFIGURATION

VOLTAGE RES.

3PST (DOUBLE BREAK) MAGNETIC LATCHING
115/200 VOLTS FREQ. 400HZ
275 AMP 115/200 VAC
350 AMP
RES. 5 MIN.
SUB TRANSIENT 450 AMP
SHORT CIRCUIT 1600 AMP
INTERLUPT 1000 AMP
AUXILIARY CONTACTS 2000 AMP

COIL DATA

7 SPST N.O., 7 SPST N. C.

DUTY CYCLE

CONTINUOUS (SELF - DEENERGIZING)

CLOSE

15 VOLTS AT 85°C
28 VOLTS
15 VOLTS
28 VOLTS
6 AMPS MAX
6 AMPS MAX

TRIP

20 MSEC MAX. AT 15VDC
20 MSEC MAX. AT 15VDC
50,000 CYCLES MIN.
100,000 CYCLES MIN.
4 LBS.

CURRENT

1 2 3 4 9 10 11 12 17 18 19 20 25 26
5.6, 7.8 13.14, 15.16 21.22, 23.24 27, 28
.01 7.5 7.5 1
28VDC 28VDC 28VDC 240VAC

SEE NOTE NO. 4

ENVIRONMENTAL DATA

-55°C MIN. +85°C MAX.
PER BOEING DB-44599-22, CAT.A
MIL-STD-810C METHOD 513.2
PER BOEING DB-44599 PARA. 2.3
45,000 FT.

ACCELERATION

SHOCK

ALTITUDE

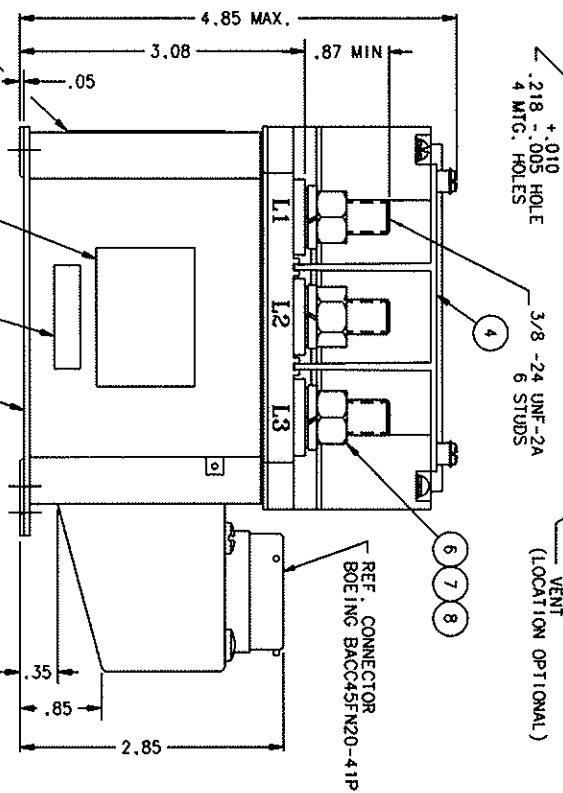
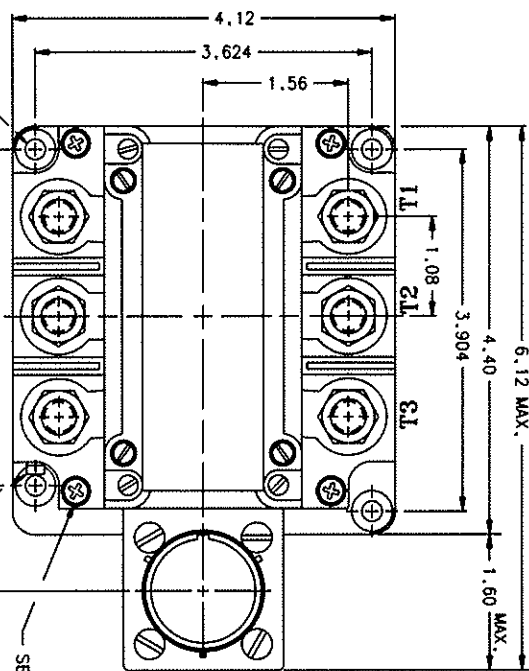
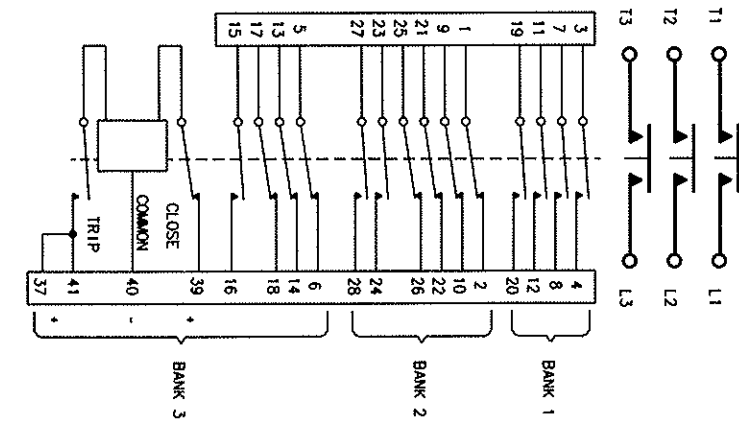
OPERATE TIME

TRIP

20 MSEC MAX. AT 15VDC
20 MSEC MAX. AT 15VDC
50,000 CYCLES MIN.
100,000 CYCLES MIN.
4 LBS.

LIFE ELECTRICAL

LIFE MECHANICAL



NOTES:

1. THIS UNIT MEETS THE MATERIAL AND WORKMANSHIP REQUIREMENTS OF MIL-R-6106.
2. MOUNTING SURFACE SHALL PROVIDE ELECTRICAL GROUND.
3. TERMINAL COVER ITEM NO. 4 REMOVED FROM TOP VIEW.
4. EFFECTIVE WITH S/N CD30086 FOUR COVER SCREWS WILL BE COUNTERSUNK BELOW THE BASE LEVEL.
5. FAA/PMA PLATE (AND OVERLAY) NOT REQUIRED ON UNITS SUPPLIED TO ORIGINAL EQUIPMENT MANUFACTURERS.

| REF. | | | |
|------|-----|------|--|
| NO | QTY | RECD | IDENTIFYING NO |
| 1 | 1 | | 39529-008 OVERLAY, WIRING DIAGRAM |
| 2 | 1 | | 39529-002 OVERLAY, NAME PLATE |
| 3 | 1 | | 39529-024 OVERLAY, FAA LABEL |
| 4 | 1 | | 58400-030 PLATE - FAA/PMA |
| 5 | 1 | | 51807-230 WASHER LOCK .375 X .687 X .094 SPLIT |
| 6 | 6 | | 51704-010 WASHER .390 X .625 X .032 FLAT |
| 7 | 6 | | 50407-370 NUT 3/8-24 X .562 X .328 HEX. |
| 8 | 1 | | 40167-001 PLATE - NAME |
| 9 | 2 | | 38006-010 COVER - TERMINAL ASSEMBLY |
| 10 | 1 | | 39536-001 PLATE - WIRING DIAGRAM |
| 11 | 1 | | 35894-020 CONTACTOR ASSEMBLY - PRIMARY |
| 12 | 1 | | 35894-020 CONTACTOR ASSEMBLY - PRIMARY |

HARTMAN ELECTRICAL MANUFACTURING
MANFIELD, OHIO

CONTACTOR - 3PST MAGN. LATCH
275 AMP 115/200V, 400 HZ.

SIZE CODE IDENT DWG NO.

C 74063 B-430-1

SCALE NONE SHEET

Mouser Electronics

Authorized Distributor

Click to View Pricing, Inventory, Delivery & Lifecycle Information:

[TE Connectivity:](#)

[B4301](#)