

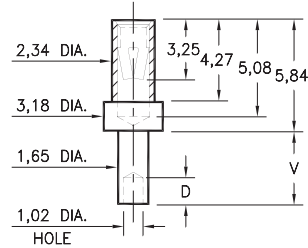
PIN RECEPTACLES

FOR 0,81 - 1,17 DIAMETER PINS

0344

0344-X-19-XX-34-XX-10-0

Swage mount in 1,70 hole

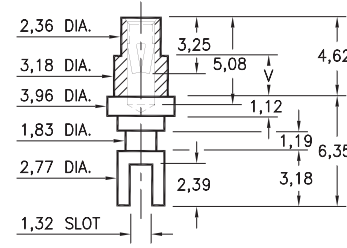


Basic Part Number	Board Thickness	Length V	Depth D
0344-1	0,78	1,57	1,02
0344-2	1,57	2,39	1,57
0344-3	2,39	3,18	1,57
0344-4	3,18	3,96	1,57

0349

0349-X-31-XX-34-XX-10-0

Swage mount in 3,28 hole

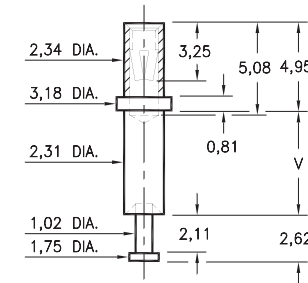


Basic Part Number	Board Thickness	Length V
0349-2	1,57	2,39
0349-3	2,39	3,18
0349-4	3,18	3,96

0323

0323-X-15-XX-34-XX-10-0

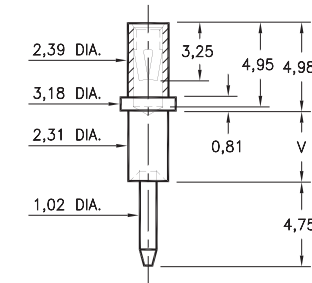
Swage mount in 2,39 hole



0324

0324-X-15-XX-34-XX-10-0

Swage mount in 2,39 hole

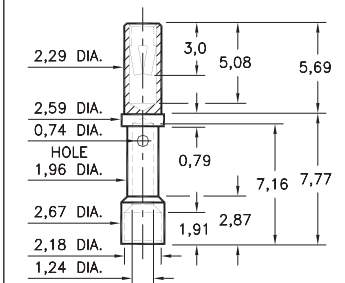


Basic Part Number	Board Thickness	Length V
032X-1	0,79	1,57
032X-2	1,57	2,39
032X-3	2,39	3,18
032X-4	3,18	3,96
032X-5	4,78	5,56

0348

0348-0-33-XX-34-XX-10-0

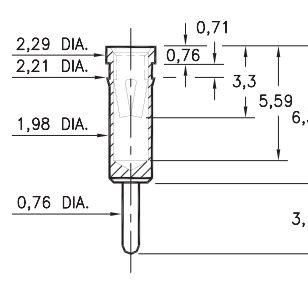
Wire crimp termination. Accepts wire sizes 20 AWG Max. / 24 AWG Min.



0405

0405-0-15-XX-34-XX-04-0

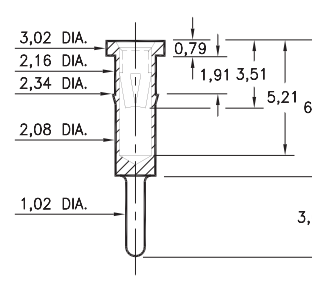
Press-fit in 2,13 mounting hole



0336

0336-0-15-XX-34-XX-04-0

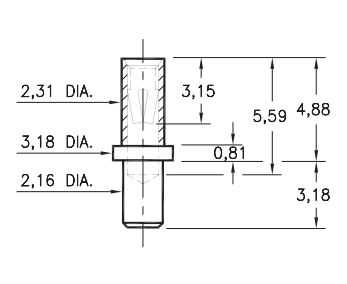
Press-fit in 2,26 mounting hole



0322

0322-0-15-XX-34-XX-10-0

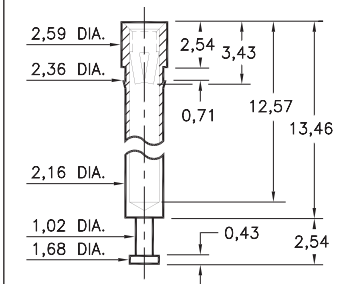
Solder mount in 2,26 min. mounting hole



0325

0325-0-15-XX-34-XX-10-0

Press-fit in 2,29 mounting hole



SPECIFICATIONS:

Shell Material: Brass Alloy 360, 1/2 Hard

Contact Material: Beryllium Copper Alloy 172, HT

Dimensions: Millimeters

Tolerances On: Lengths: ±0,13

Diameters: ±0,051

Angles: ±2°



ORDER CODE: XXXX - X - XX - XX - 34 - XX - XX - 0

BASIC PART #

SPECIFY SHELL FINISH:

- 01 5,08µm TIN/LEAD OVER NICKEL
- ◆ 80 5,08µm TIN OVER NICKEL (RoHS)
- ◆ 15 0,25µm GOLD OVER NICKEL (RoHS)

SPECIFY CONTACT FINISH:

- 01 5,08µm TIN/LEAD OVER NICKEL
- ◆ 80 5,08µm TIN OVER NICKEL (RoHS)
- ◆ 27 0,76µm GOLD OVER NICKEL (RoHS)

SELECT CONTACT:

#34 CONTACT (DATA ON PAGE 258)

(For alternate contact choices, see group E on page 248)



Mouser Electronics

Authorized Distributor

Click to View Pricing, Inventory, Delivery & Lifecycle Information:

[Mill-Max:](#)

[0324-2-15-15-34-27-10-0](#) [0336-0-15-15-34-27-04-0](#) [0348-0-33-15-34-27-10-0](#)