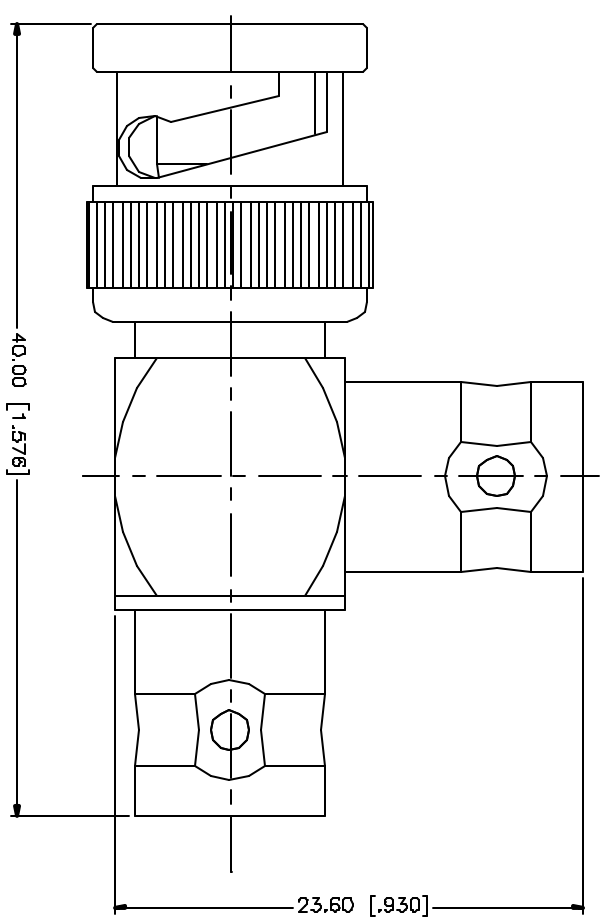


REV.	DATE	DESCRIPTION
A	11/21/03	UPDATE DRAWING FORMAT
B	06/04/05	MODIFY BODY PLATING TO NICKEL



REV.	DESCRIPTION	MATERIAL	FINISH	QTY
8				
7				
6				
5				
4				
3	CONTACT PIN	BRASS	GOLD	1
2	INSULATOR	DELFIN	NATURAL	1
1	BODY	BRASS	NICKEL	1
	DESCRIPTION	MATERIAL	FINISH	QTY

<p>UNLESS OTHERWISE SPECIFIED DIMENSIONS ARE IN MILLIMETERS DIMENSIONS IN [] ARE IN INCHES AND FOR DIMENSIONAL SYSTEMS ONLY.</p> <p>UNLESS OTHERWISE SPECIFIED TOLERANCES FOR MILLIMETERS ARE:</p> <p>0.5 - 8mm ± 0.20mm 8 - 30mm ± 0.40mm 30 - 120mm ± 0.50mm</p> <p>UNLESS OTHERWISE SPECIFIED TOLERANCES FOR INCHES ARE:</p> <p>0.25 - .315 = ± 0.0075 .315 - 1.180 = ± 0.015 1.180 - 4.724 = ± 0.025</p> <p>DO NOT SCALE DRAWING</p>	<p>APPROVALS</p> <p>DRAWN G.R.S. DATE 05/04/05</p> <p>CHECKED</p> <p>RELEA</p> <p>SHEET 1 OF 1</p>	<p>CAD FILE C:/112/112567.DWG</p> <p>DWG. NO. 112567DWG</p> <p>REV. B</p> <p>SIZE A</p> <p>SCALE NA</p>
---	--	---

<p>Amphenol Connex</p> <p>PART DESCRIPTION</p> <p>BNC MALE TO DOUBLE BNC FEMALE</p> <p>PART NO. 112567</p>	
---	--

Mouser Electronics

Authorized Distributor

Click to View Pricing, Inventory, Delivery & Lifecycle Information:

[Amphenol:](#)

[112567](#)