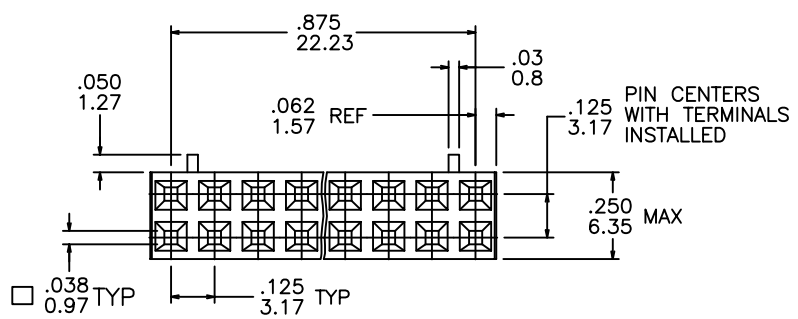
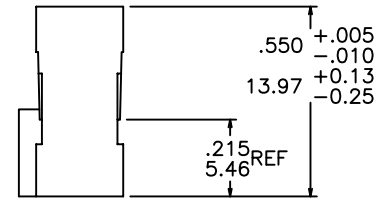
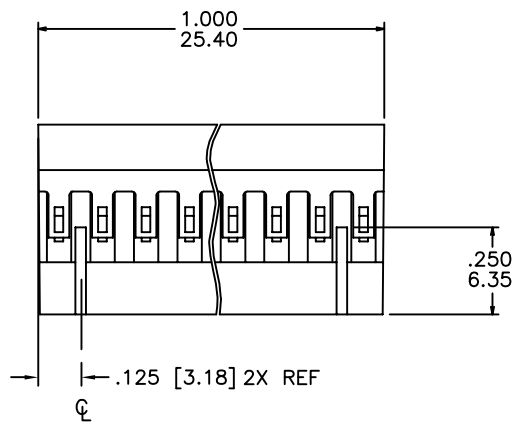


Tous droits strictement reserves. Reproduction ou communication a des tiers interdite sous quelque forme que ce soit sans autorisation écrite du propriétaire. Propriete de c FCI. Droits de reproduction FCI.



All rights strictly reserved. Reproduction or issue to third parties in any form whatever is not permitted without written authority from the proprietor. Property of FCI. Copyright FCI.

PRODUCT NUMBER
92993-001



NOTES:

- MOLDING MAT'L: MODIFIED POLYPHENYLENE ETHER. COLOR - BLACK, MEETING UL-94V-0.
- PIN LENGTH TO BE .210/5.33 MIN. RECOMMENDED PIN LENGTH IS .225±.015/5.72±0.38.
- SEE MINI-P.V.™ TERMINAL TA-75 FOR CORRECT CRIMP HEIGHT FOR EACH WIRE SIZE. IF THIS SPECIFICATION IS NOT MET LATCHING WILL NOT BE SATISFACTORY.
- THIS HOUSING IS INTENDED FOR USE WITH MINI P.V.™ TERMINAL AND C.T.W. MALE PIN WITH 22-36 A.W.G. WIRE.

mat'l. code NOTE 1				tolerances unless otherwise specified		CUSTOMER COPY		 www.fciconnect.com	
ltr	ecn no	dr	date	linear	.xx ±.01/.x±.3	projection		title	
A	V30270	DEW	D1/18/93		.xxx ±.005/.xx±.13			MINI LATCH HOUSING	
B	V30308	JWB	D1/26/98		.xxxx ±.0020/.xxx±.051			DR. .125/3.18x.125/3.18cc	
C	V51219	MSC	11/22/95	angles	0° ±2°	INCH/MM		product family MINI LATCH	
D	V90983	DKE	06/24/99	dr	D.WHITING 01/18/93	scale		code	
E	V03-1363	FJ	02/21/04	engr	T.HANNA 01/18/93	2:1		size dwg no	
				chr	T.HANNA 01/18/93	A		213	
				appd	T.HANNA 01/18/93	92993		sheet	
sheet	revision	E						1 of 1	
index	sheet	1							

cage code
22526

ACAD

PDM: Rev:E

STATUS: Released

Printed: Sep 27, 2005

Mouser Electronics

Authorized Distributor

Click to View Pricing, Inventory, Delivery & Lifecycle Information:

[FCI / Amphenol:](#)

[92993-001LF](#)