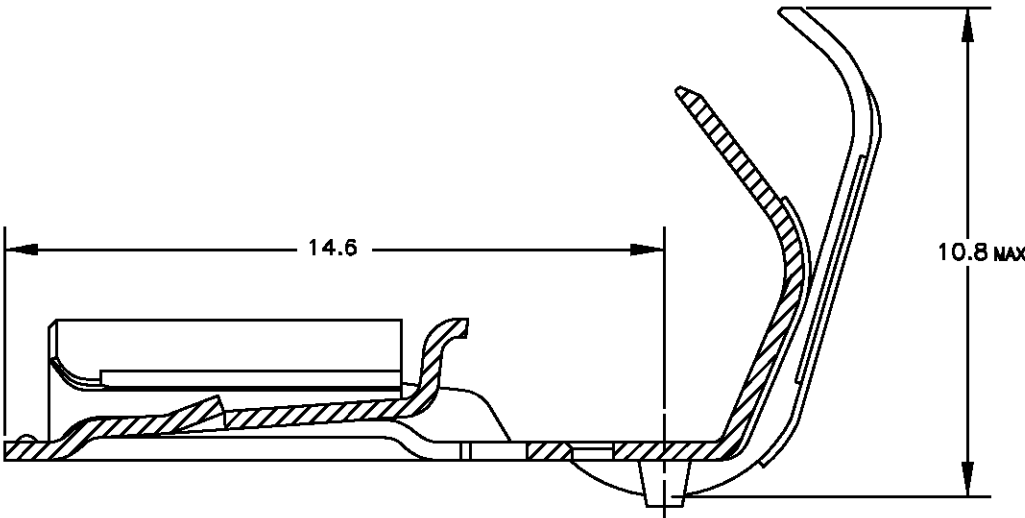
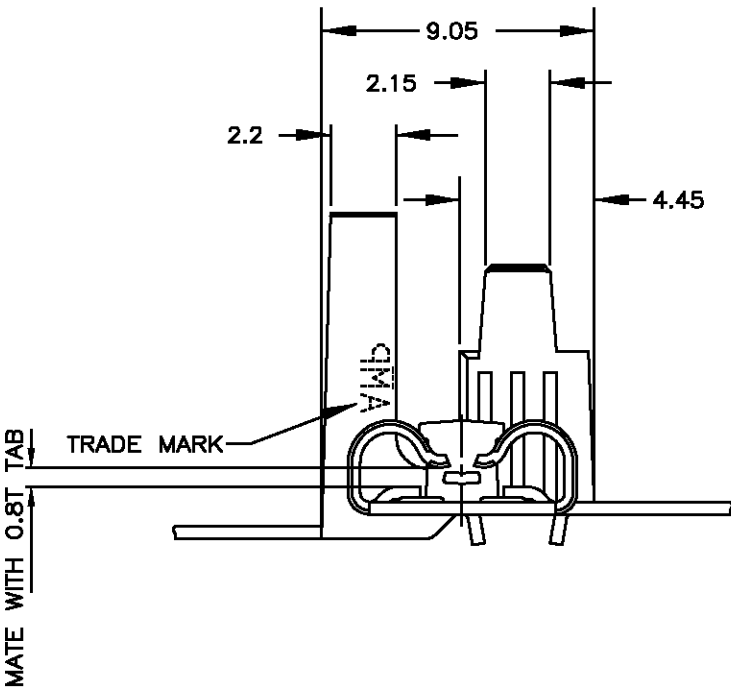
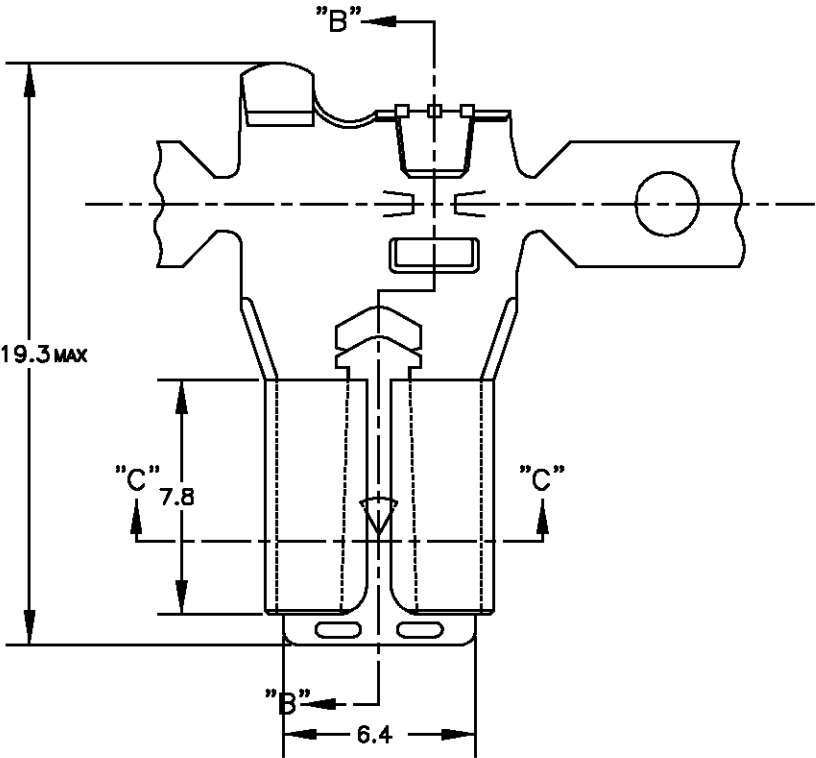
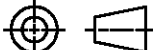


LOC DS	DIST	REVISIONS					
		P	LTR	DESCRIPTION	DATE	DWN	APVD
			0	RELEASED ( FC00-0200-04)	AUG.25.'04	BH	CS



SECT "B"-"B"  
SCALE 6-1

PRE-TIN BRASS 0.4t	1743221-1
MATERIAL	PART NUMBER
WIRE RANGE	INSULATION DIA
AWG#18~#12	2.8~4.1

THIS DRAWING IS A CONTROLLED DOCUMENT FOR TYCO ELECTRONICS CORPORATION. IT IS SUBJECT TO CHANGE AND THE CONTROLLING ENGINEERING ORGANIZATION SHOULD BE CONTACTED FOR THE LATEST REVISION.		DWN: BH CHD		<div><div>tyco</div><div>Electronics</div></div>		AMP KOREA.				
		CHK: BW KANG				kyungsan, korea				
DIMENSIONS: MM		TOLERANCES UNLESS OTHERWISE SPECIFIED:  0 <XX<10 ± 0.2 10<XX<30 ± 0.25 30<XX ± 0.3 ANGLES ± 3°		APVD: CS LEE		NAME				
 3rd ANGLE PROJECTION				PRODUCT SPEC		250 SERIES FLAG POSITIVE LOCK EX RECEPTACLE				
				APPLICATION SPEC						
MATERIAL		FINISH		WEIGHT		SIZE	CAGE CODE	DRAWING NO	RESTRICTED TO	
SEE TABLE						A3	00779	C=	1743221	
						SCALE 4/1		SHEET 1 OF 1		REV 0

# Mouser Electronics

Authorized Distributor

Click to View Pricing, Inventory, Delivery & Lifecycle Information:

[TE Connectivity:](#)

[1743221-1](#)