

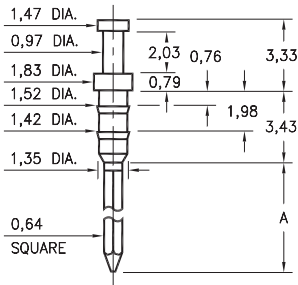
MALE PCB PINS

WRAPOST TERMINALS

1096

1096-X-05-XX-00-00-01-0

Press-fit in 1,45 mounting hole

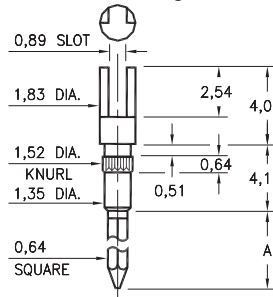


Basic Part Number	# of Wraps	Length A
1096-2	2	9,68
1096-3	3	13,39

1106

1106-X-23-XX-00-00-01-0

Press-fit in 1,45 mounting hole

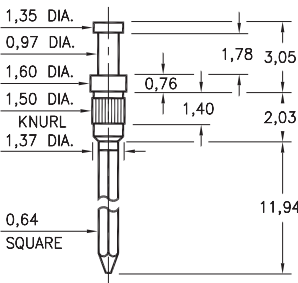


Basic Part Number	# of Wraps	Length A
1106-2	2	9,40
1106-3	3	12,95

1093

1093-0-05-XX-00-00-01-0

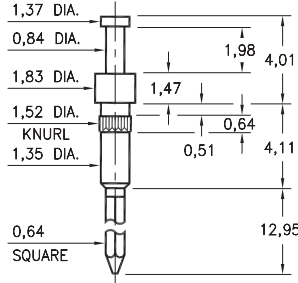
Press-fit in 1,42 mounting hole



0730

0730-3-05-XX-00-00-01-0

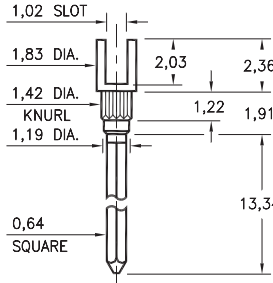
Press-fit in 1,45 mounting hole



1122

1122-0-22-XX-00-00-01-0

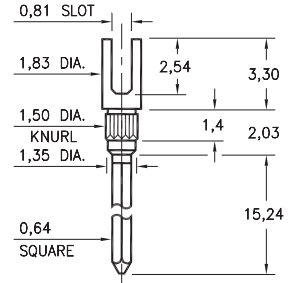
Press-fit in 1,35 mounting hole



1064

1064-0-23-XX-00-00-01-0

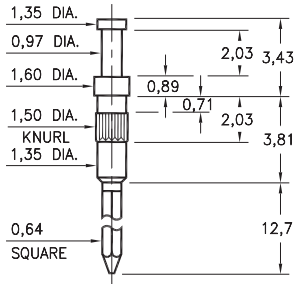
Press-fit in 1,42 mounting hole



1092

1092-0-05-XX-00-00-01-0

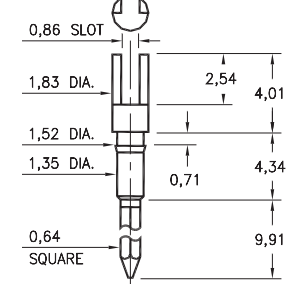
Press-fit in 1,42 mounting hole



1068

1068-0-23-XX-00-00-01-0

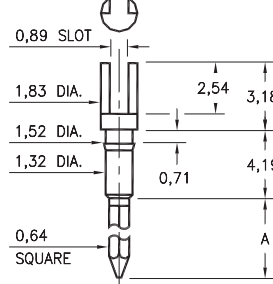
Press-fit in 1,45 mounting hole



1070 → 1072

107X-X-23-XX-00-00-01-0

Press-fit in 1,45 mounting hole



Basic Part Number	# of Wraps	Length A
1072-1	1	6,60
1071-2	2	9,40
1070-3	3	12,95

SPECIFICATIONS:

Pin Material: Brass Alloy 360, 1/2 Hard
(Except where noted)

Dimensions: Millimeters

Tolerances On: Lengths: ±0,13
Diameters: ±0,051
Angles: ±2°



ORDER CODE: XXXX - X - XX - XX - 00 - 00 - 01 - 0

BASIC PART #

SPECIFY PIN FINISH:

- 01 5,08µm TIN/LEAD OVER NICKEL
- ◆ 80 5,08µm TIN OVER NICKEL (RoHS)
- ◆ 15 0,25µm GOLD OVER NICKEL (RoHS)
- ◆ 21 0,51µm GOLD OVER NICKEL (RoHS)



Mouser Electronics

Authorized Distributor

Click to View Pricing, Inventory, Delivery & Lifecycle Information:

[Mill-Max:](#)

[1106-3-23-80-00-00-01-0](#)