
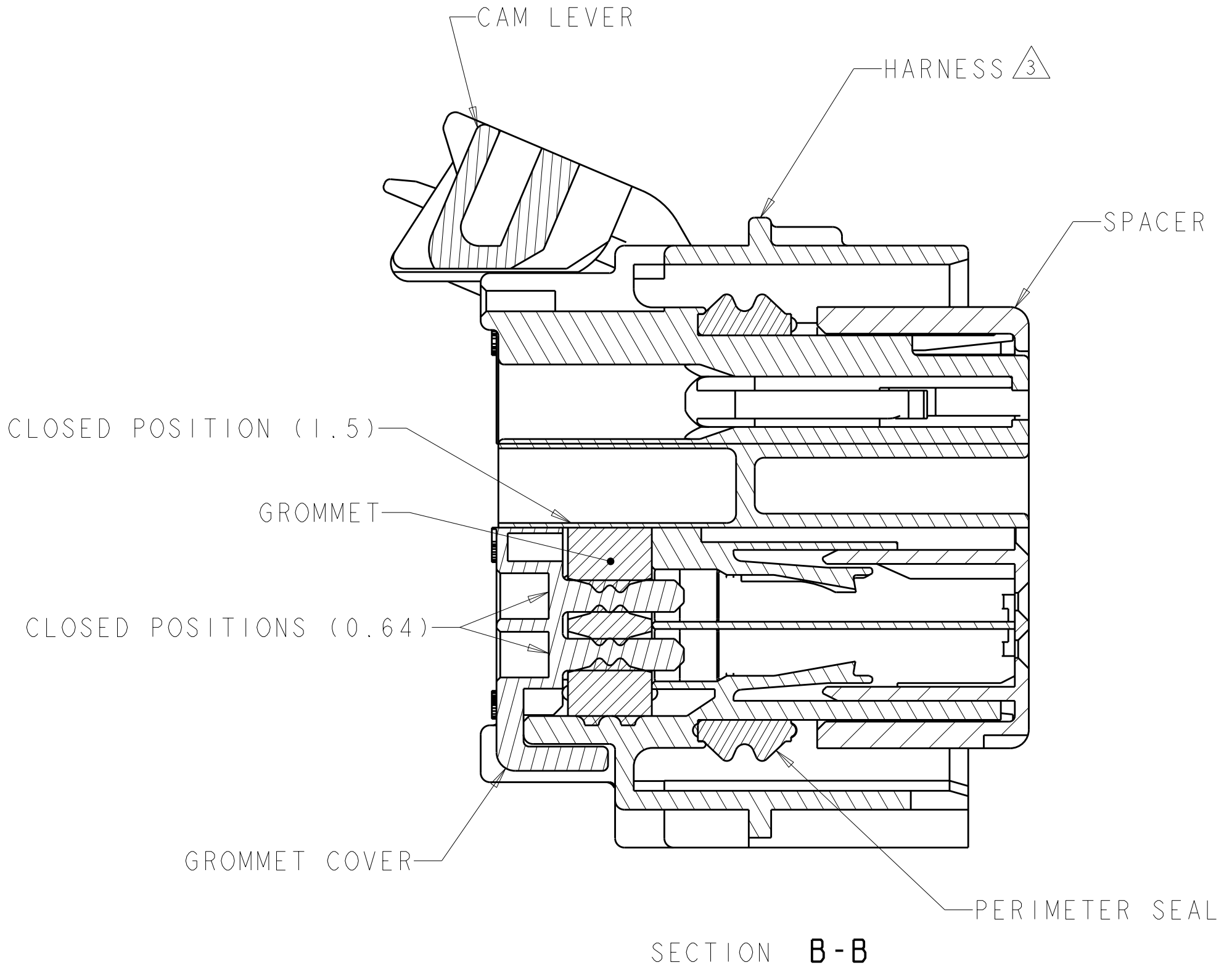
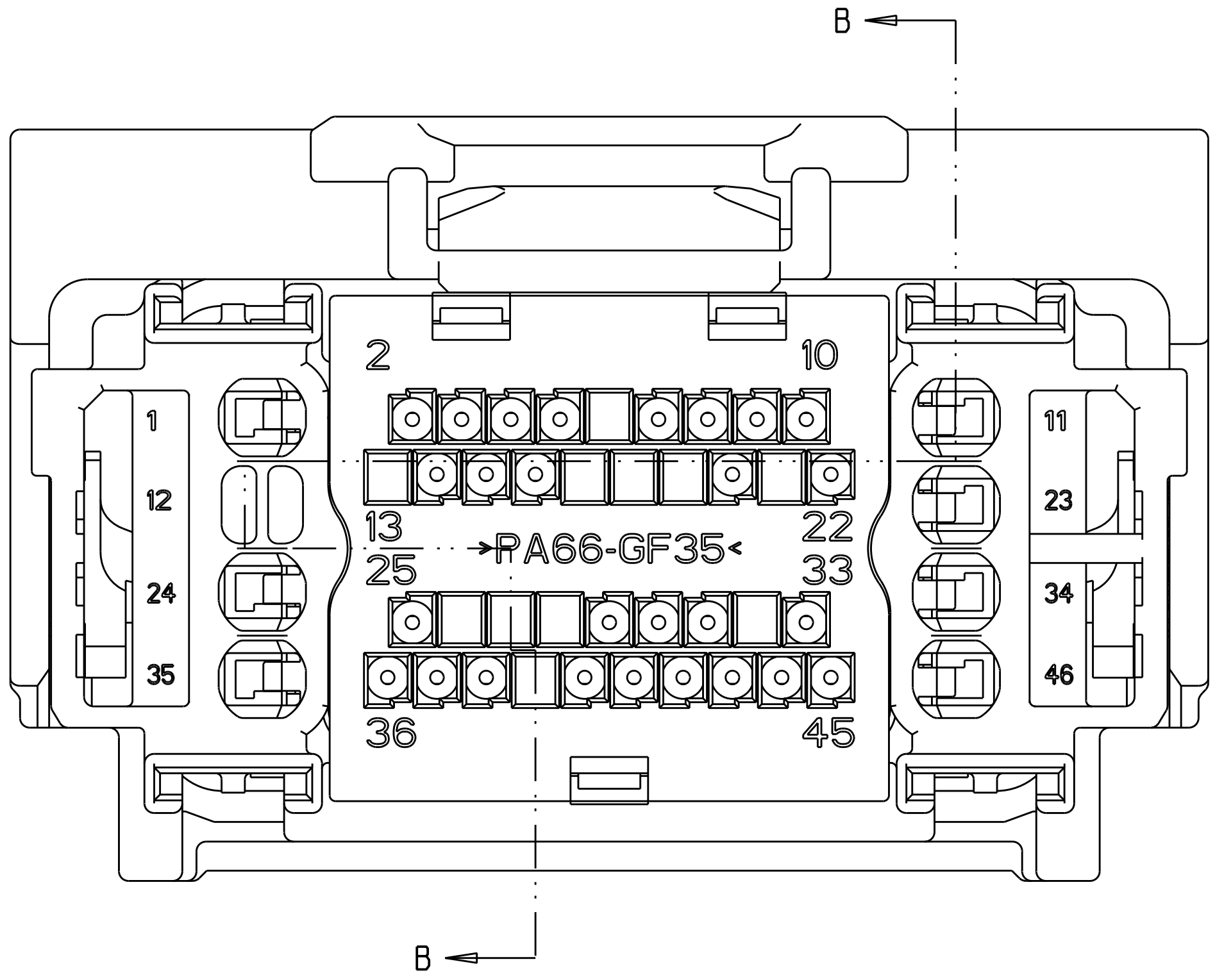
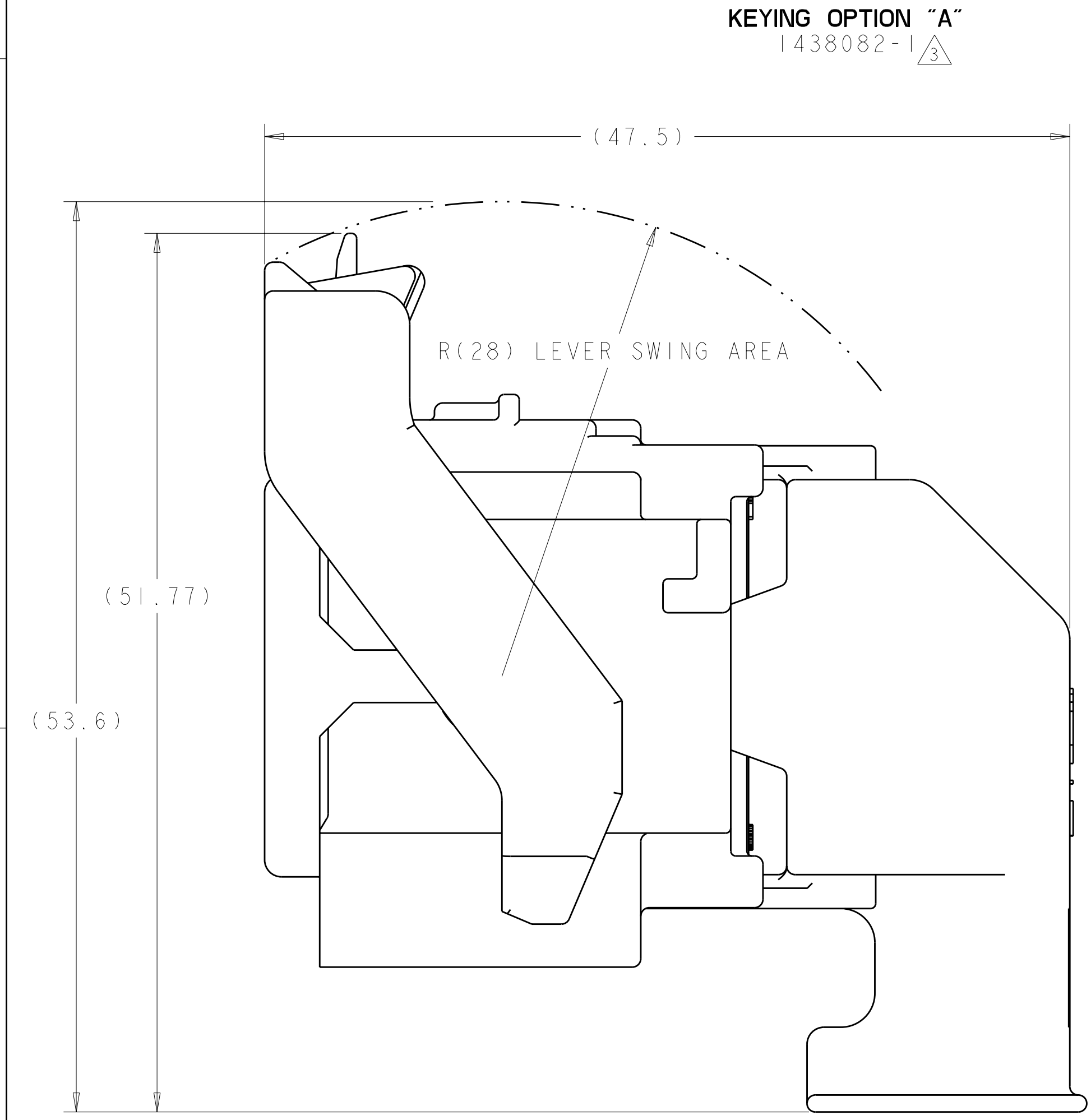


SCALE 1 : 1

KEYING OPTION "B"  
1438082-2 





△ MATERIAL:  
HARNES - 35% GLASS FILLED PA66, BLACK  
ALT MAT'L: HARNES - 30% GLASS FILLED sPS, BLACK  
SPACER - 40% GLASS FILLED PPS+PA66, RED  
ALT MAT'L: 30% GLASS FILLED sPS, RED  
ALT MAT'L: 35% GLASS FILLED PA66, RED  
COVER - 35% GLASS FILLED PA66, BLACK  
ALT MAT'L: COVER - 30% GLASS FILLED LCP, BLACK  
CAM LEVER - 35% GLASS FILLED NYLON, GRAY  
GROMMET - SILICONE, BROWN  
PERIMETER SEAL - SILICONE, GREEN

2. CAM LEVER AND SPACER ARE SHIPPED IN PRE-LATCH POSITION.

③ SEE PINOUT CHART ON SHEETS 2, 3 AND 4 FOR CLOSED CIRCUIT CONFIGURATIONS.

④ CAVITIES WITH A NUMERIC SYMBOL INDICATES CLOSED TERMINAL LOCATIONS.  
BLANK CAVITIES INDICATE OPEN TERMINAL HOLE LOCATIONS.

SHOWN WITH CAM LEVER AND SPACER  
IN LOADED POSITION WITH  
OPTIONAL WIRESHIELD

<small>THIS DRAWING IS A CONNECTOR SPECIFICATION FOR THE CONNECTOR CORPORATION          IT IS SUBJECT TO THE DESIGN AND MANUFACTURING ORGANIZATION          SHOULD BE CONTACTED FOR THE LATEST REVISION.</small>		<small>DWN          01AUG2003</small> <b>P. VESTAL</b>		 <b>Tyco Electronics</b> Harrisburg, PA 17105-3608	
<small>DIMENSIONS:</small> mm		<small>TOLERANCES UNLESS OTHERWISE SPECIFIED:</small> 0 PLC ± 1 PLC ±0.3 2 PLC ±0.10 3 PLC ± 4 PLC ± ANGLES ±°		<small>CHG          01AUG2003</small> <b>D. STRAUSSER</b>	
		<small>APVD          01AUG2003</small> <b>D. STRAUSSER</b>		NAME 46 WAY PCM CONNECTOR HARNESS ASSEMBLY	
<small>MATERIAL</small> SEE TABLE		<small>FINISH</small> SEE TABLE		SIZE CAGE CODE DRAWING NO RESTRICTED TO A 00779 C=1438082 -	
CUSTOMER DRAWING				SCALE 4:1 SHEET 1 OF 5 REV 1	

LOC	DIST	REVISIONS					
FX	00	P	LTR	DESCRIPTION	DATE	DWN	APVD
			-	SEE SHEET 1	-	-	-

45	43				39	37	36	35			31					24						18	17	16		14	13	12			9		7	6			2	1	9-1438082-7	2LIT-14A464-SD-051				
			42																		20	18			15	14			11	10		8	7			4	3	2	1	9-1438082-6	2LIT-14A464-SD-050			
			42																		20	18							11	10									1	9-1438082-5	2LIT-14A464-SD-049			
			42																		20	18							11	10									2	1	9-1438082-4	2LIT-14A464-SD-048		
								35							27																										9-1438082-3	2LIT-14A464-SD-047		
	45	43					36	35			32	31				24		21		19	18	17	16		14	12							7	6					1	9-1438082-1	2LIT-14A464-SD-046			
46											31																															9-1438082-0	2LIT-14A464-SD-045	
											31					24								16										8					3	2	8-1438082-9	2LIT-14A464-SD-044		
															27																											8-1438082-8	2LIT-14A464-SD-043	
	45	44	43	42		40	38	37	36		33	31		29		24	22	20		18	17	16	15								9	8					3		8-1438082-7	2LIT-14A464-SD-042				
	45	44	43	42		40	38	37	36		33	31		29		24	22	21	20	19	18	17	16	15							9	8		6				2	8-1438082-6	2LIT-14A464-SD-041				
46												31																							9			6			3	8-1438082-5	2LIT-14A464-SD-040	
			43	42		39	37												20	19	18								11	10	9								2	1	8-1438082-4	2LIT-14A464-SD-039		
			43									31		29							18																					8-1438082-3	2LIT-14A464-SD-038	
	45	44	43	42		40	38	37	36		33	31		29		24	22	21	20		18	17	16	15							9	8						2	8-1438082-0	2LIT-14A464-SD-037				
	45		43						36	35			31			24							16		14	12							7	6				2	1	7-1438082-9	2LIT-14A464-SD-036			
	45		43						36	35			31			24		21		19			16		14	12							7	6				2	1	7-1438082-8	2LIT-14A464-SD-035			
			43	42		39	38	37			32			28							19	18	17	16					10	9											7-1438082-5	2LIT-14A464-SD-034		
	45	44	43	42		40	38	37	36		33	31		29		24	22	21	20		18	17	16	15							9	8		6				2	7-1438082-4	2LIT-14A464-SD-033				
	45	44	43	42		40	38	37	36		33	31				24	22	21	20		18	17	16	15							9	8		6				2	7-1438082-3	2LIT-14A464-SD-032				
					40									29																			9								6-1438082-6	2LIT-14A464-SD-031		
																																										6-1438082-3	2LIT-14A464-SD-030	
																																											6-1438082-2	2LIT-14A464-SD-029
																																											6-1438082-1	2LIT-14A464-SD-028
														29	28		25		21			18		16											6	5						5-1438082-6	2LIT-14A464-SD-027	
													29	28		25		21					16												6	5						5-1438082-5	2LIT-14A464-SD-026	
											30	29						21				18		16																			5-1438082-2	2LIT-14A464-SD-025
			43	42		39	37												20	19	18	17		15	14			11	10	9	8	7				4	3	2	1	5-1438082-0	2LIT-14A464-SD-024			
			42																					15	14			11	10	9	8	7					4	3		1	4-1438082-9	2LIT-14A464-SD-023		
			43	42		39	37												20	19	18	17						11	10	9								2	1	4-1438082-8	2LIT-14A464-SD-022			
			42																										11	10	9									1	4-1438082-7	2LIT-14A464-SD-021		
			43	42		39	37																						11	10	9										2	4-1438082-2	2LIT-14A464-SD-020	
	45	43					36	35			31					24						18	17	16		14	12							7	6				2	1	4-1438082-0	2LIT-14A464-SD-019		
		43	42		39	37											23		20	19	18	17		15	14		11	10	9	8	7				4	3	2	3-1438082-8	2LIT-14A464-SD-018					
			42															23							15	14		11	10	9	8	7				4	3			3-1438082-7	2LIT-14A464-SD-017			
		43	42		39	37												23		20	19	18	17	16				11	10	9								2	3-1438082-6	2LIT-14A464-SD-016				
			42															23										11	10	9											3-1438082-5	2LIT-14A464-SD-015		
	45	43			39	37	36	35			31					24		21		19	18	17	16		14	13	12				9		7	6			2	1	3-1438082-4	2LIT-14A464-SD-014				
	45	43			39	37	36	35		33	31					25	24		21		19	18	17	16		14	13	12				9		7	6			2	1	3-1438082-3	2LIT-14A464-SD-013			
	45	43						36	35			31				24		21		19	18	17	16		14	12							7	6				2	1	3-1438082-2	2LIT-14A464-SD-012			
			42																						15	14	13			10	9	8	7				4	3			3-1438082-1	2LIT-14A464-SD-011		
		43	42		39	37														20	19	18	17			13			10	9									2	3-1438082-0	2LIT-14A464-SD-010			
			42																							13			10	9												2-1438082-9	2LIT-14A464-SD-009	
		43	42		39	37																																						

LOC	DIST	REVISIONS					
FX	00	P	LTR	DESCRIPTION	DATE	DWN	APVD
		-		SEE SHEET 1	-	-	-

		44							35		32							22								12		9	7	6				1	6-1438735-7	2LIT-14A464-SD-086																
		44							35		32															12		9	7	6				1	6-1438735-3	2LIT-14A464-SD-085																
									35																											6-1438735-2	2LIT-14A464-SD-084															
			43	42		40	39		37					29					20	18			15	14		11	10	9	8	7		4	3	1	6-1438735-1	2LIT-14A464-SD-083																
45		43						38	36			31					25	24					18	17	16	14	12			7	6		2	1	5-1438735-0	2LIT-14A464-SD-082																
45		43						38	36			31					25	24						16	14	12			7	6		2	1	4-1438735-9	2LIT-14A464-SD-081																	
45		43						38	36			32	31				25	24		21	19	18	17	16	14	12			7	6			1	4-1438735-8	2LIT-14A464-SD-080																	
45		43						39	38	37	36			31			25	24					18	17	16	14	13	12		9	7	6		2	1	4-1438735-7	2LIT-14A464-SD-079															
				42																20	18				13	11	10						2	1	3-1438735-8	2LIT-14A464-SD-078																
				42																20	18				13	11	10						1	3-1438735-7	2LIT-14A464-SD-077																	
45		43						39	38	37	36			31			25	24		21	20	19	18	17		14	13	12		9				2	1	3-1438735-6	2LIT-14A464-SD-076															
45		43										31					25	24		21	20	19	18	17		14	12						2	1	3-1438735-5	2LIT-14A464-SD-075																
			43	42		40	39		37					29						20	18			15	14		11	10	9	8	7		4	3	2	1	3-1438735-3	2LIT-14A464-SD-074														
45		43						39	38	37	36			31			25	24			20	19	18	17		14	13	12		9				2	1	3-1438735-2	2LIT-14A464-SD-073															
45		43							38	36			31				25	24		21	20	19	18	17	16	14	12			7				2	1	3-1438735-1	2LIT-14A464-SD-072															
45		43						39	38	37	36			31			25	24		21	20	19	18	17	16	14	13	12		9	7			2	1	3-1438735-0	2LIT-14A464-SD-071															
45		43							38	36			31				25	24		21	20	19			16	14	12			7				2	1	2-1438735-9	2LIT-14A464-SD-070															
45		43						39	38	37	36			31			25	24		21	20	19			16	14	13	12		9	7			2	1	2-1438735-8	2LIT-14A464-SD-069															
45		43							38	36			31				25	24			20	19	18	17		14	12						2	1	2-1438735-6	2LIT-14A464-SD-068																
											33															13							6	5			2-1438735-5	2LIT-14A464-SD-067														
45	44	43	42		40			38	37	36		33	31				24		22	21	20		18	17	16	15				9	8			2	2-1438735-4	2LIT-14A464-SD-066																
		43										31		29									18							8				2	2-1438735-1	2LIT-14A464-SD-065																
45		43							38		36	35		31			25	24		21				16	14	12			7	6			2	1	2-1438735-0	2LIT-14A464-SD-064																
45		43						39	38	37	36	35		31			25	24					18	17	16	14	13	12		9	7	6			2	1	1-1438735-9	2LIT-14A464-SD-063														
45		43							38		36	35		32	31			25	24		21	19	18	17	16	14	12			7	6			1	1-1438735-8	2LIT-14A464-SD-062																
45		43							38		36	35		31			25	24						16	14	12			7	6			2	1	1-1438735-7	2LIT-14A464-SD-061																
45		43							38		36	35		31			25	24		21	19			16	14	12			7	6			2	1	1-1438735-6	2LIT-14A464-SD-060																
45		43							38		36	35		31			25	24					18	17	16	14	12			7	6			2	1	1-1438735-5	2LIT-14A464-SD-059															
45		43						39	38	37	36	35		31			25	24		21	19	18	17	16	14	13	12		9	7	6			2	1	1-1438735-4	2LIT-14A464-SD-058															
45		43							38		36	35		31			25	24		21	19	18	17	16	14	12			7	6			2	1	1-1438735-3	2LIT-14A464-SD-057																
				42							37									20	18			15	14		11	10	9	8	7		4	3	2	1	1-1438735-2	2LIT-14A464-SD-056														
45		43									36	35		31			24		21	19			16	14	12			7	6				1	1-1438735-1	2LIT-14A464-SD-055																	
											35						27																3		1-1438735-0	2LIT-14A464-SD-054																
			43									31		29									18						9	8				2	1438735-9	2LIT-14A464-SD-053																
											35						27													7					1438735-8	2LIT-14A464-SD-052																
46	45	44	43	42	41	40	39	38	37	36	35	34	33	32	31	30	29	28	27	26	25	24	23	22	21	20	19	18	17	16	15	14	13	12	11	10	9	8	7	6	5	4	3	2	1		PART NUMBER	FORD PART NUMBER				
TERMINAL HOLE POSITION																																																				
PIN-OUT CHART KEYING OPTION "A"																																																				

THIS DRAWING IS UNPUBLISHED. IT IS SUBJECT TO CHANGE WITHOUT NOTICE FOR TYCO ELECTRONICS CORPORATION. IT IS SUBJECT TO CHANGE WITHOUT NOTICE FOR THE CUSTOMER'S ORGANIZATION. IT IS SUBJECT TO CHANGE WITHOUT NOTICE FOR THE LATEST EDITION.

DIMENSIONS:

mm

MATERIAL

-

TOLERANCES UNLESS OTHERWISE SPECIFIED:

9 PLC ±.3

1 PLC ±0.10

5 PLC ±

4 PLC ±

ANGLES ±°

FINISH -

DWN R. VESTAL 01AUG2003

CHK D. STRAUSSER 01AUG2003

APVD D. STRAUSSER 01AUG2003

NAME

46 WAY PCM CONNECTOR HARNESS ASSEMBLY

PRODUCT SPEC

APPLICATION SPEC

WEIGHT

CUSTOMER DRAWING

SIZE A

CAGE CODE 00779

DRAWING NO. C=1438082

RESTRICTED TO -

SCALE 4:1

SHEET 3 OF 5

REV S 11

Tyco Electronics  
Harrisburg, PA 17105-3608





# Mouser Electronics

Authorized Distributor

Click to View Pricing, Inventory, Delivery & Lifecycle Information:

[TE Connectivity:](#)

[6-1438082-5](#)