

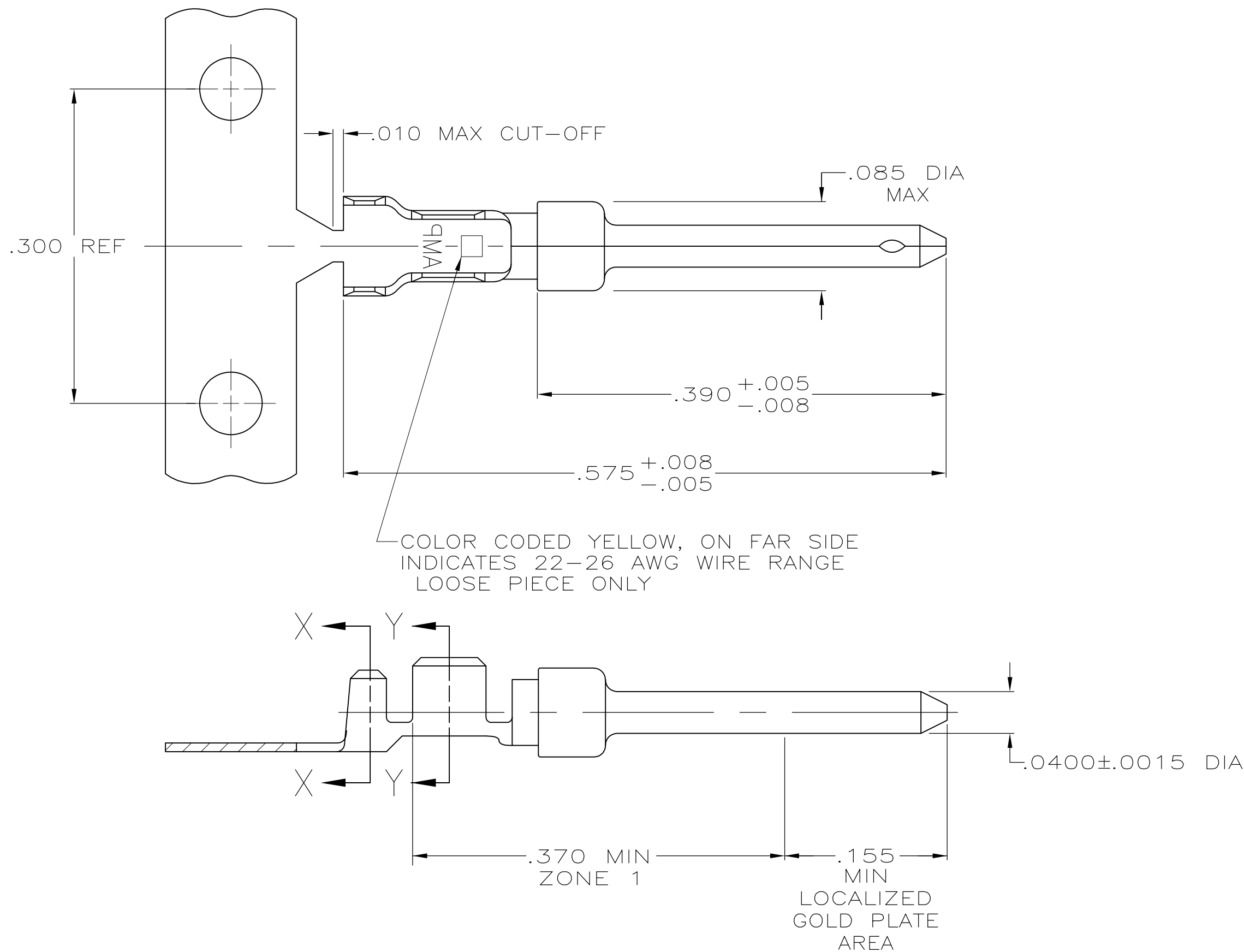
LOC	DIST	REVISIONS				
		P	LTR	DESCRIPTION	DATE	DWN
GP	00					APVD
		L		REVISED PER ECO-12-021696	27FEB2013	CJV
						SLB

D

C

B

A



- 1

FOR MINI-APPLICATOR.
- 2

FOR HAND TOOL USE ONLY.
3. WIRE RANGE OF 22-26, INSULATION RANGE OF .040-.050.
4. GOLD PLATING MAY NOT APPEAR ON CARRIER STRIP. NICKEL UNDERPLATE COVERS ENTIRE CONTACT.
- 5

GOLD PLATING PER MIL-G-45204. NICKEL PLATING PER QQ-N-290. TIN PLATING PER MIL-T-10727.
- 6

GOLD PLATED IN LOCALIZED GOLD PLATE AREA AS FOLLOWS: .000030 MIN GOLD IN MATED AREA, GOLD FLASH ON REMAINDER OF LOCALIZED GOLD PLATE AREA AND ZONE 1 OF CONTACT, ALL OVER .000050 MIN NICKEL UNDERPLATE.
OR
GOLD FLASH OVER PALLADIUM-NICKEL PLATE, .000030 MIN TOTAL IN MATED AREA, GOLD FLASH ON REMAINDER OF LOCALIZED GOLD PLATE AREA AND ZONE 1 OF CONTACT, ALL OVER .000050 MIN NICKEL UNDERPLATE.
- 7

.000001 MIN GOLD ON LOCALIZED GOLD PLATE AREA AND ZONE 1 OVER .000030 MIN NICKEL.
- 8

GOLD PLATED IN LOCALIZED GOLD PLATED AREA, .000001 MIN GOLD IN MATED AREA, TIN PLATED WIRE BARRELS, OVER .000030 NICKEL.
- 9

GOLD PLATED IN LOCALIZED GOLD PLATED AREA, .000030 GOLD IN MATED AREA, TIN PLATED WIRE BARRELS, OVER .000050 NICKEL.

D

C

B

A

OBSOLETE	SMALL PACK	<div>7</div>	<div>2</div>	LOOSE PIECE	1-745254-7
OBSOLETE	STANDARD	<div>9</div>	<div>2</div>	LOOSE PIECE	1-745254-6
OBSOLETE	STANDARD	<div>9</div>	<div>1</div>	STRIP	1-745254-4
OBSOLETE	STANDARD	<div>8</div>	<div>2</div>	LOOSE PIECE	1-745254-3
OBSOLETE	STANDARD	<div>8</div>	<div>1</div>	STRIP	1-745254-1
	STANDARD	<div>7</div>	<div>2</div>	LOOSE PIECE	745254-7
	STANDARD	<div>6</div>	<div>2</div>	LOOSE PIECE	745254-6
	STANDARD	<div>7</div>	<div>1</div>	STRIP	745254-3
	STANDARD	<div>6</div>	<div>1</div>	STRIP	745254-2
PACKAGING TYPE		FINISH	USE	TYPE	PART NUMBER

THIS DRAWING IS A CONTROLLED DOCUMENT. DIMENSIONING AND TOLERANCING PER ASME Y14.5M-2009		DWN S.WELDON 9-9-86	<div>TE Connectivity</div>		
DIMENSIONS: INCHES		CHK C.RICHARD 9-9-86			
<div></div>		APVD V. KUMAR 9-10-86	NAME		
		PRODUCT SPEC	PIN CONTACT, SIZE 20 DF, 22-26 AWG, W/.040-.050 DIA INSULATION SUPPORT		
TOLERANCES UNLESS OTHERWISE SPECIFIED:		APPLICATION SPEC	SIZE	CAGE CODE	DRAWING NO
0 PLC ± -		114-10000	A2	00779	C-745254
1 PLC ± -		WEIGHT	RESTRICTED TO		
2 PLC ± -		-	-		
3 PLC ± .005		CUSTOMER DRAWING	SCALE 10:1 SHEET 1 OF 1 REV L		
4 PLC ± -					
ANGLES ± -					
FINISH					
MATERIAL BRASS PER MIL-C-50		<div>5</div> SEE TABLE			

SECTION X-X
INSULATION BARREL
SCALE 20:1

SECTION Y-Y
WIRE BARREL
SCALE 20:1

Mouser Electronics

Authorized Distributor

Click to View Pricing, Inventory, Delivery & Lifecycle Information:

[TE Connectivity:](#)

[745254-7](#)