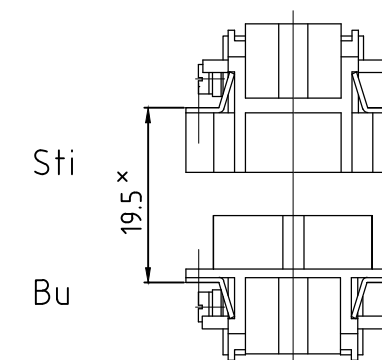
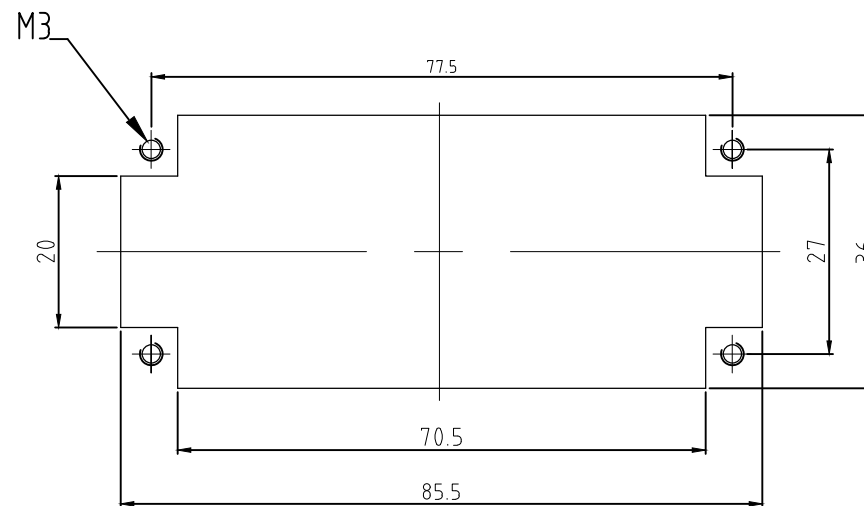
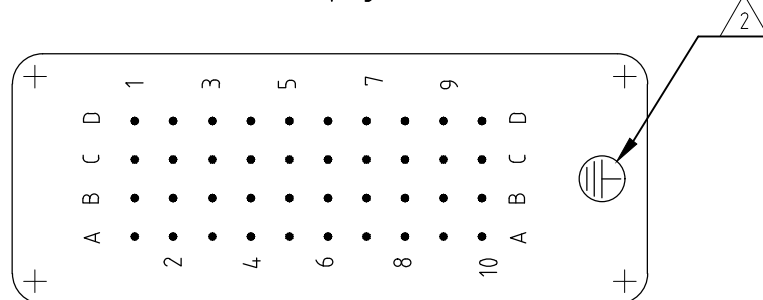


P	LTR	DESCRIPTION BESCHREIBUNG	DATE	DWN	APVD
	D	ECR-17-018317	22DEC2017	GCM	MKO

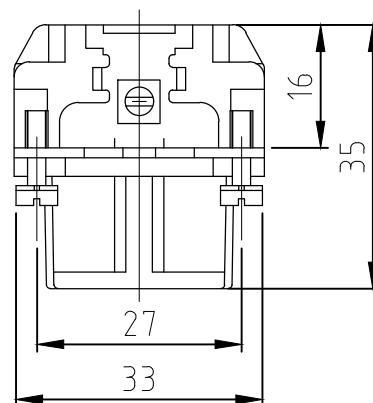
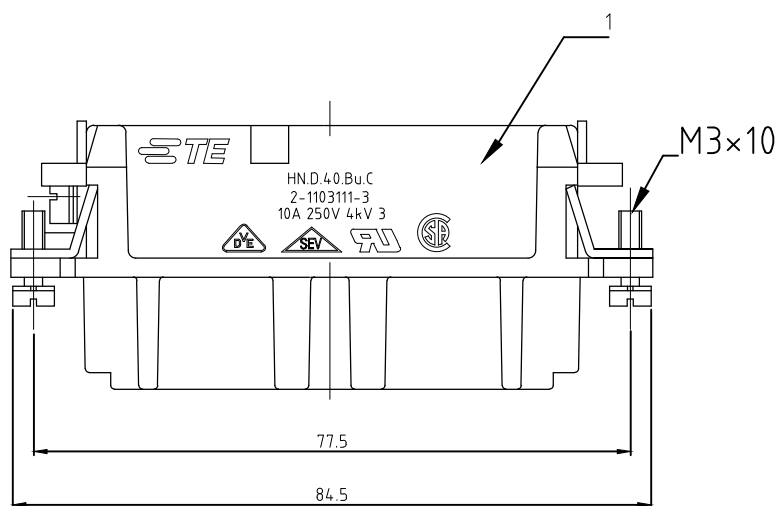
### Panel cut-out for contact insert when used without housing

### Montagehinweis

view from plug side



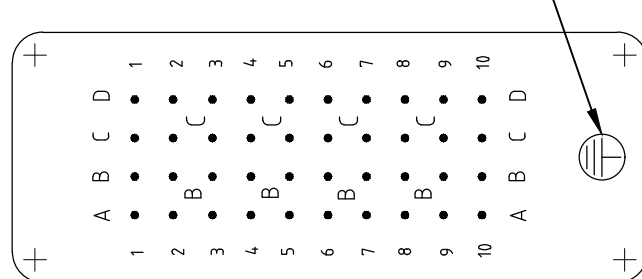
\* Abstand für sichere Kontaktgabe max: 21 mm

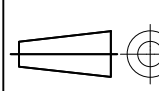


### NOTES

- 1 CONTACT: 1 - 40
- OUTER DIMENSION OF INSULATION: MAX.  $\phi 4,3$  MM
- △2 GROUNDING CONTACT CAN BE FIXED AT THIS POSITION.
- 3 SUITABLE HOOD SIZE 6: SERIES HB, HD, EMV, AND HIP
- 4 STANDARDS: DIN EN 61984; DIN EN 60664-1
- △5 PACKAGING: 5 PIECES IN A CARTON

view from termination side



1	Buchseneinsatz HN.D.40 Crimp	dark grey	1	-
2-3	DESCRIPTION / BENENNUNG	MATERIAL	COLOR / FARBE	ITEM NO.
△5	<p>THIS DRAWING IS A CONTROLLED DOCUMENT. DIESE ZEICHNUNG IST EIN KONTROLLIERTES DOKUMENT.</p> <p>DIMENSIONS: MASSE/HEITEN: mm</p>  <p>TOLERANCES UNLESS OTHERWISE SPECIFIED: ALLGEMEINTOLERANZEN</p> <p>0 PLC ± - 1 PLC ± - 2 PLC ± - 3 PLC ± - 4 PLC ± - ANGLES / WINKEL ± -</p> <p>MATERIAL</p>	<p>DWN <b>Schneider</b> 12AUG1998</p> <p>CHK <b>Schweiger</b> 12AUG1998</p> <p>APVD -</p> <p>PRODUCT SPEC PRODUKTSPEZ. <b>108-74002</b></p> <p>APPLICATION SPEC VERARBEITUNGSSPEZ. <b>114-74000</b></p> <p>WEIGHT GEWICHT <b>69g</b></p>	<p>12AUG1998</p> <p>12AUG1998</p> <p>-</p> <p><b>108-74002</b></p> <p><b>114-74000</b></p> <p><b>69g</b></p>	<p>REMARKS / BEMERKUNGEN</p> <p><b>STE</b> TE Connectivity</p> <p>FEMALE INSERT BUCHSENEINSATZ HN.D.40</p> <p>SIZE <b>A3</b></p> <p>CAGE CODE <b>00779</b></p> <p>DRAWING NO ZEICHNUNGS-NR. <b>G-1103111</b></p> <p>RESTRICTED TO NUR FUER -</p>
ORDERING TEXT / BESTELLTEXT		CUSTOMER DRAWING/KUNDENZEICHNUNG		SCALE MASSTAB <b>1:1</b>
HN.D.40.Bu.C		SCALE		SHEET BLATT <b>1</b> von <b>1</b>
		SCALE		REV <b>D</b>

# Mouser Electronics

Authorized Distributor

Click to View Pricing, Inventory, Delivery & Lifecycle Information:

[TE Connectivity:](#)

[2-1103111-3](#)