

10 9 8 7 6 5 4 3 2 1

F

E

D

C

B

A

F

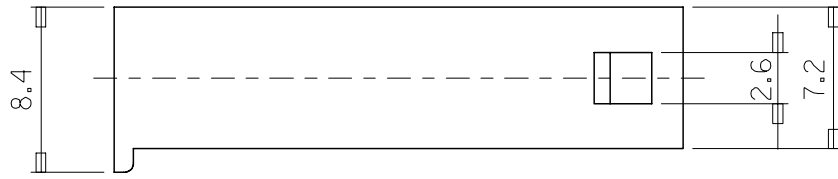
E

D

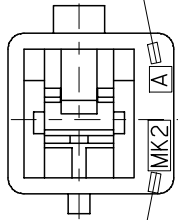
C

B

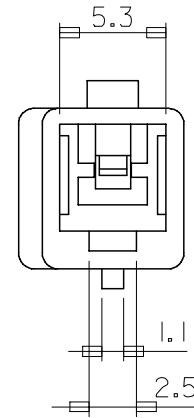
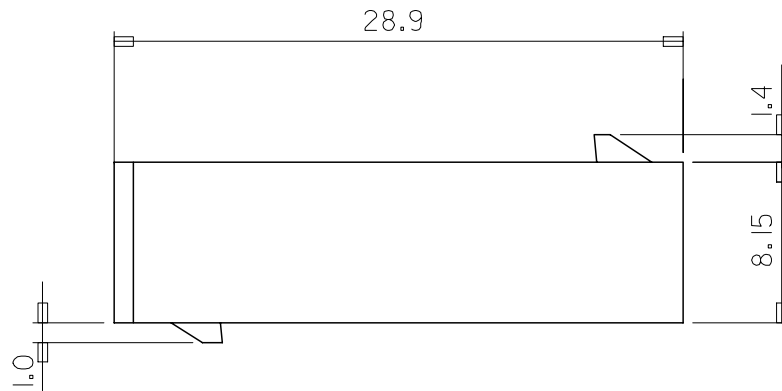
A



CAV. NO. (A, B...)



TRADE MARK
(MK2)



NOTES

1. MATERIAL & COLOR : SEE TABLE
2. MATING HOUSING: 35151-0110
3. APPLICABLE TERMINAL: 35745-0*10
4. APPLICABLE TPA: 35182-019*

NO	PRODUCT		MATERIAL	
	PART NO	MATERIAL NO	COLOR	DESCRIPTION
1	35150-0100	351500100	NATURAL	PBT (UL94V-0)
2	35150-0102	351500102	RED	
3	35150-0104	351500104	BLUE	PBT/PC
4	35150-0109	351500109	NATURAL	

REVISED
EC NO: KOR2008-0048
87478
DRWN: JHPARK01 2007/09/10
CHKD: WY. YANG 2007/09/10
APPR: YUNSIKKIM 2007/09/10

QUALITY SYMBOLS
 =0
 =0

	GENERAL TOLERANCES (UNLESS SPECIFIED)	
	mm	INCH
4 PLACES	± .005	± .0002
3 PLACES	± .002	± .0001
2 PLACES	± .001	± .00005
1 PLACE	± 0.3	± .012
ANGULAR ± 1 °		

DRAFT WHERE APPLICABLE
MUST REMAIN WITHIN DIMENSIONS

DIMENSION STYLE	
MM ONLY	DATE
DRAWN BY	DATE
WY. YANG	
CHECKED BY	DATE
BK. CHOI	
APPROVED BY	DATE
CW. LEE	

SCALE	DESIGN UNITS	THIRD ANGLE PROJECTION
4:1	METRIC	
TITLE		
.070 W/W RECEPTACLE HSG-1P		
MOLEX INCORPORATED		
MATERIAL NO.	DOCUMENT NO.	SHEET NO.
SEE TABLE	SD-35150-0100	1 OF 01

THIS DRAWING CONTAINS INFORMATION THAT IS PROPRIETARY TO MOLEX INCORPORATED AND SHOULD NOT BE USED WITHOUT WRITTEN PERMISSION

9 8 7 6 5 4 3 2 1